

# STONE CREEK TOWNE CENTER

9825 Colerain Ave & 3645-3659 Stone Creek Blvd  
Cincinnati, OH 45251

FOR LEASE

1,200 SF - 6,000 SF

## HIGHLIGHTS

- Located at I-275 & State Route 27 (Colerain Avenue)
- 2 signalized access points
- Anchored by Best Buy, Bed Bath & Beyond, JCPenney and Meijer
- Other retailers include Old Navy, Justice, Lane Bryant and La-Z-Boy Furniture
- Restaurants include Olive Garden, Logan's Roadhouse, Quaker Steak & Lube, Five Guys, LaRosa's, Buffalo Wild Wings and TGI Friday's

## TRAFFIC COUNTS

- 78,542 VPD on I-275
- 39,311 VPD on Colerain Avenue

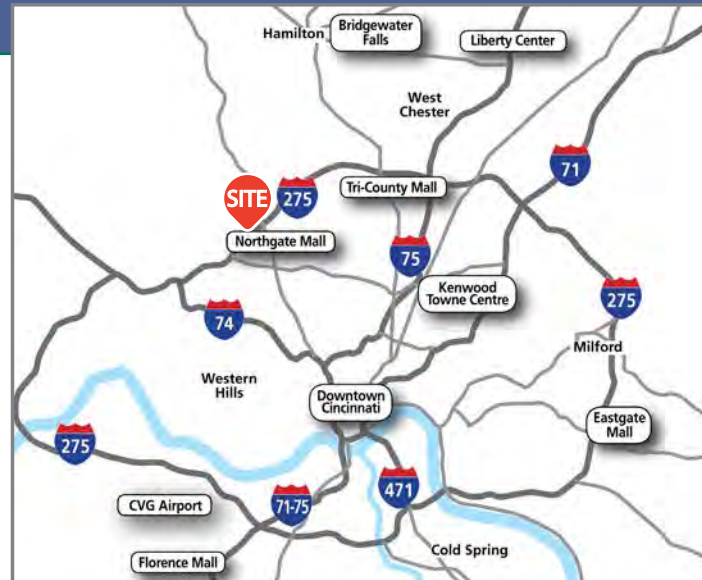
## DEMOGRAPHICS

2019 Estimates	1 miles	3 miles	5 miles
Population	11,074	58,318	151,846
Households	4,609	23,857	63,265
Average HH Income	\$74,030	\$77,432	\$76,502
Daytime Employees	6,671	18,316	44,094

CONTACT: 513-784-1106

Marianne Holewski [mholewski@anchor-associates.com](mailto:mholewski@anchor-associates.com)  
Amy Holter [aholter@anchor-associates.com](mailto:aholter@anchor-associates.com)

Anchor  
ASSOCIATES



ANCHOR  
ASSOCIATES

3825 Edwards Road  
Suite 630  
Cincinnati, OH 45209

513-784-1106

[www.anchor-associates.com](http://www.anchor-associates.com)

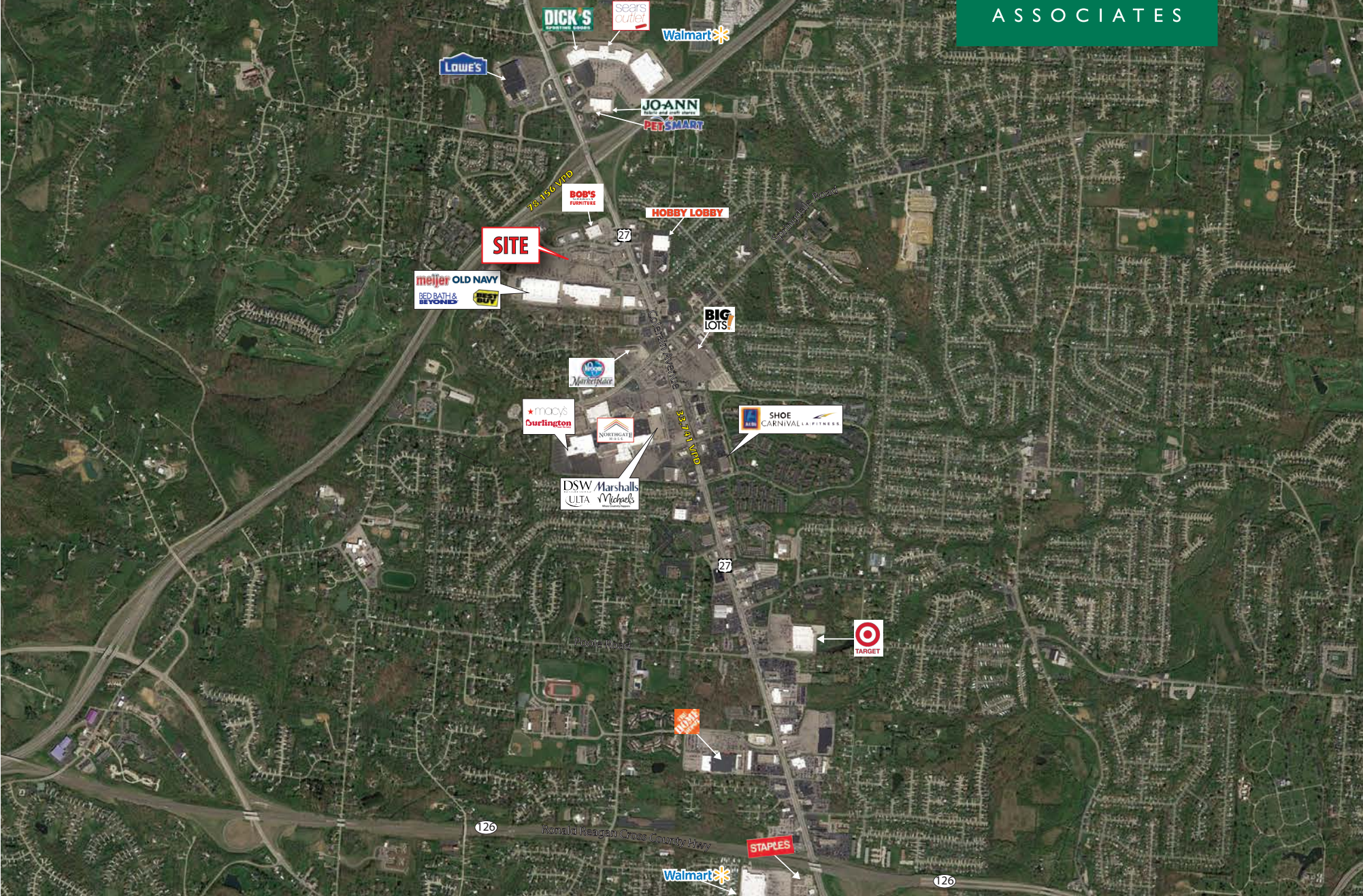
A MEMBER OF  
CHAINLINKS  
RETAIL ADVISORS

**STONE CREEK TOWNE CENTER**  
9825 Colerain Ave & 3645-3659 Stone Creek Blvd  
Cincinnati, OH 45251

**Anchor**  
ASSOCIATES



**STONE CREEK TOWNE CENTER**  
9825 Colerain Ave & 3645-3659 Stone Creek Blvd  
Cincinnati, OH 45251



The information herein is not guaranteed. Although obtained from reliable sources, it is subject to errors, omissions and withdrawal from the market without notice.

# STONE CREEK TOWNE CENTER

9825 Colerain Ave & 3645-3659 Stone Creek Blvd  
Cincinnati, OH 45251



#	Tenant	SF	#	Tenant	SF	#	Tenant	SF	#	Tenant	SF
1	AT&T	2,500	15	AVAILABLE	3,000	27	Lane Bryant	6,600	46	TGI Friday	
2	Define Eyebrows	500	16	LaRosa's Pizzeria	4,000	28	JCPenney		47	Olive Garden	
3	FedEx Office	2,000	17	Salon Concepts	4,500	29	Bed Bath & Beyond	25,000	49	Quaker Steak & Lube	
5	Men's Warehouse	1,500	18	Mariner Finance	1,823	30	Old Navy	15,000	50	Bob's Discount Furniture & Mattress Store	
6	IVX	2,250	19	Weight Watchers	1,554	31	Justice	4,000	200	La-Z-Boy	
7	Sleep Number	2,800	20	Rose & Remington	1,524	34	AVAILABLE	1,200	201	Meijer	
8	Colerain Urgent Care	3,000	21	AVAILABLE	2,596	35	Holiday Hair	1,200	208	GROUND LEASE AVAILABLE	5,000
9	Great Clips	1,200	22	Five Guys AVAILABLE 9/20	2,857	36	Gruelle Orthodontics	2,400	209	Buffalo Wild Wings	
10	L'amour Nails	1,200	23	La Pinata Mexican Grill	3,500	38	Best Buy	30,000	210	Massage Envy	
11	Fusion Wok Sushi	1,020	25	Bob Sumerel Tire & Service		44	Starbucks	1,750	211	Verizon Wireless	
12	Stone Creek Family Dentistry	2,800	26	AVAILABLE	6,050	45	Logan's Roadhouse	6,617			
13	Palm Beach Tan	3,500									

The information herein is not guaranteed. Although obtained from reliable sources, it is subject to errors, omissions and withdrawal from the market without notice.