

217 E 43RD STREET

LOCATED BETWEEN THIRD & SECOND AVENUES



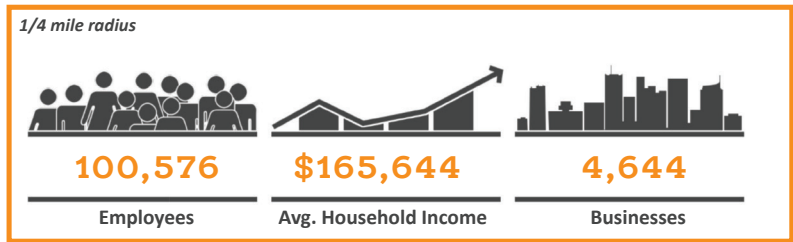
APPROXIMATE SIZE:
2,200 sq. ft. Ground Floor
* potential for a storage mezzanine

POSSESSION:
Immediate

FRONTAGE:
50'

- COMMENTS:**
- Situated between Grand Central Station and the United Nations
 - Densely populated office and residential market
 - All uses considered
 - Located at the base of a 41-story mixed-use building with 429 residential apartments
 - All glass storefront

NEIGHBORS:



MASS TRANSPORTATION:

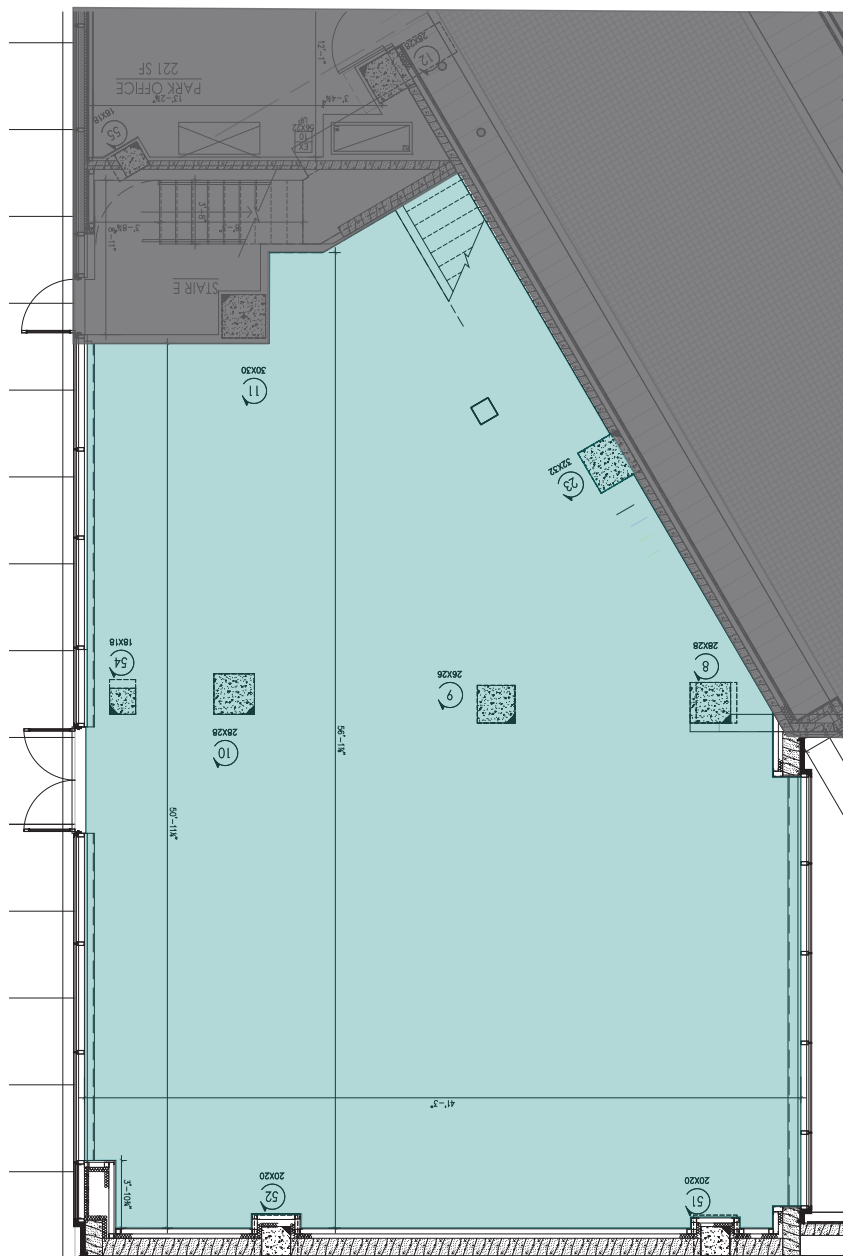
4 5 6 S 7

GRAND CENTRAL STATION
46,121,509 annual riders

NEW RESIDENTIAL DEVELOPMENT

217 E 43RD STREET

Located between Third & Second Avenues



CONTACT EXCLUSIVE AGENTS

Zelnik & Company LLC

ph: (212) 223-2200

Cory G. Zelnik

cory@zelnikco.com

Jason Turner

jason@zelnikco.com