



Capitol Heights Center

City of Brookfield, WI

Site/Price **Lot 3 - ±1.44 Acres - \$475,000
for a ±8,000 SF Office Building**

Zoning **Planned Development District (PDD)**

Utilities **Pad Ready Site**

2016 Demographics

	1 Mile	3 Miles	5 Miles
Population	6,013	31,421	94,794
Households	2,392	12,360	40,178
Median HH Inc.	\$90,330	\$94,811	\$77,968

Property Highlights

- Pond Views with Pristine Landscaping
- Development subject to PDD Agreement and Requirements
- Condominium Ownership
- Adjacent to Area Banks, Grocery and Restaurants

For more information

Rachel Schmidt, CCIM

414 395 4691

rschmidt@mlgcommercial.com

Tim Janusz

414 908 9155

tjanusz@mlgcommercial.com

757 North Broadway Street, Suite 700

Milwaukee, WI 53202

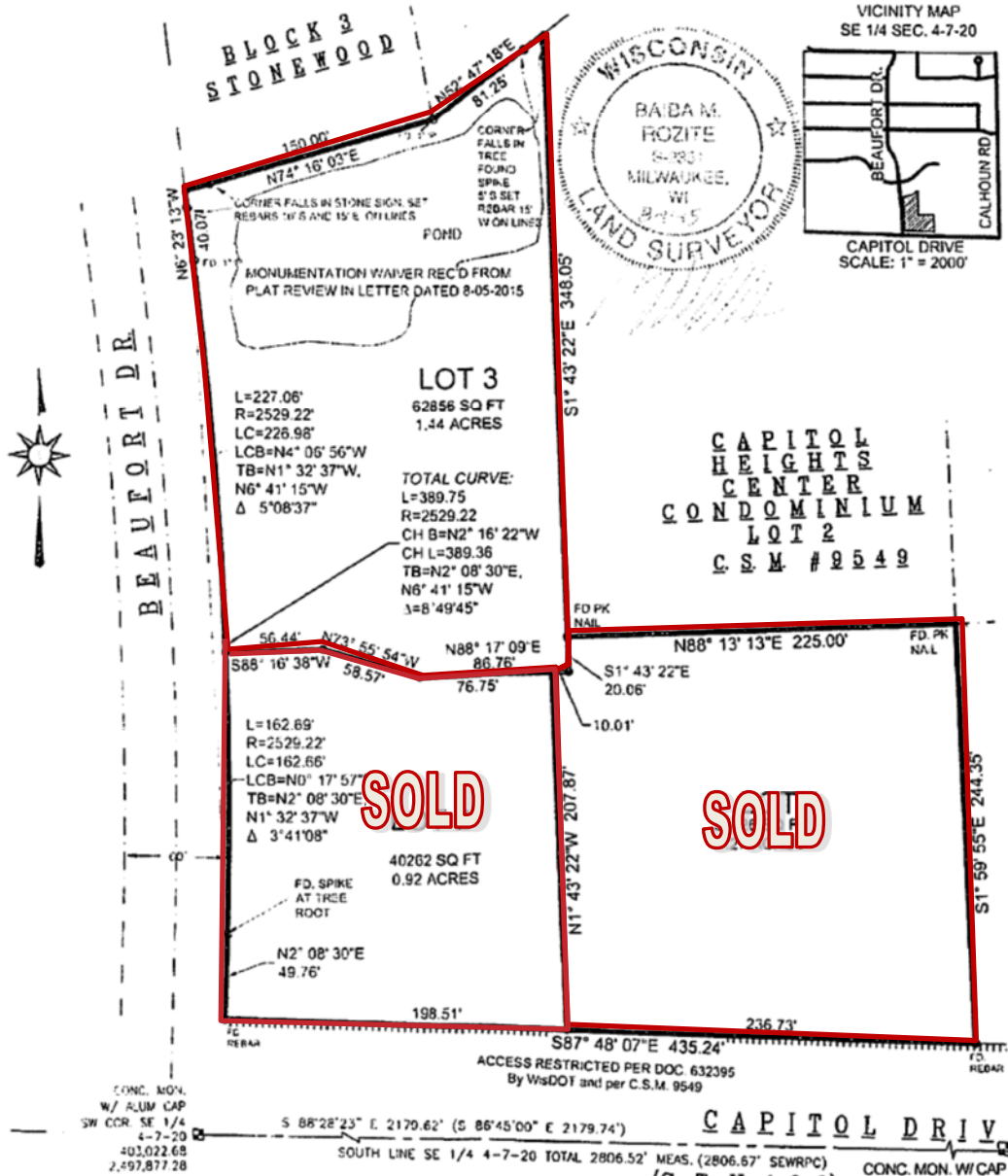
414 347 9400

mlgcommercial.com

Offices in Milwaukee and Madison, WI

CERTIFIED SURVEY MAP NO. 11341

A REDIVISION OF LOT 1 OF CERTIFIED SURVEY MAP NO. 11088, RECORDED ON AUGUST 9, 2013 AS DOCUMENT NO. 4035560, IN THE SE 1/4 OF THE SE 1/4 SECTION 4, TOWNSHIP 7 NORTH, RANGE 20 EAST, CITY OF BROOKFIELD, WAUKESHA COUNTY, WISCONSIN



LEGEND & NOTES:

- INDICATES FOUND MONUMENTATION, AS NOTED ON DRAWING.
- INDICATES SET 3/4" DIAM. REBAR, 18" LONG WEIGHING 1.50 LBS/LIN FT

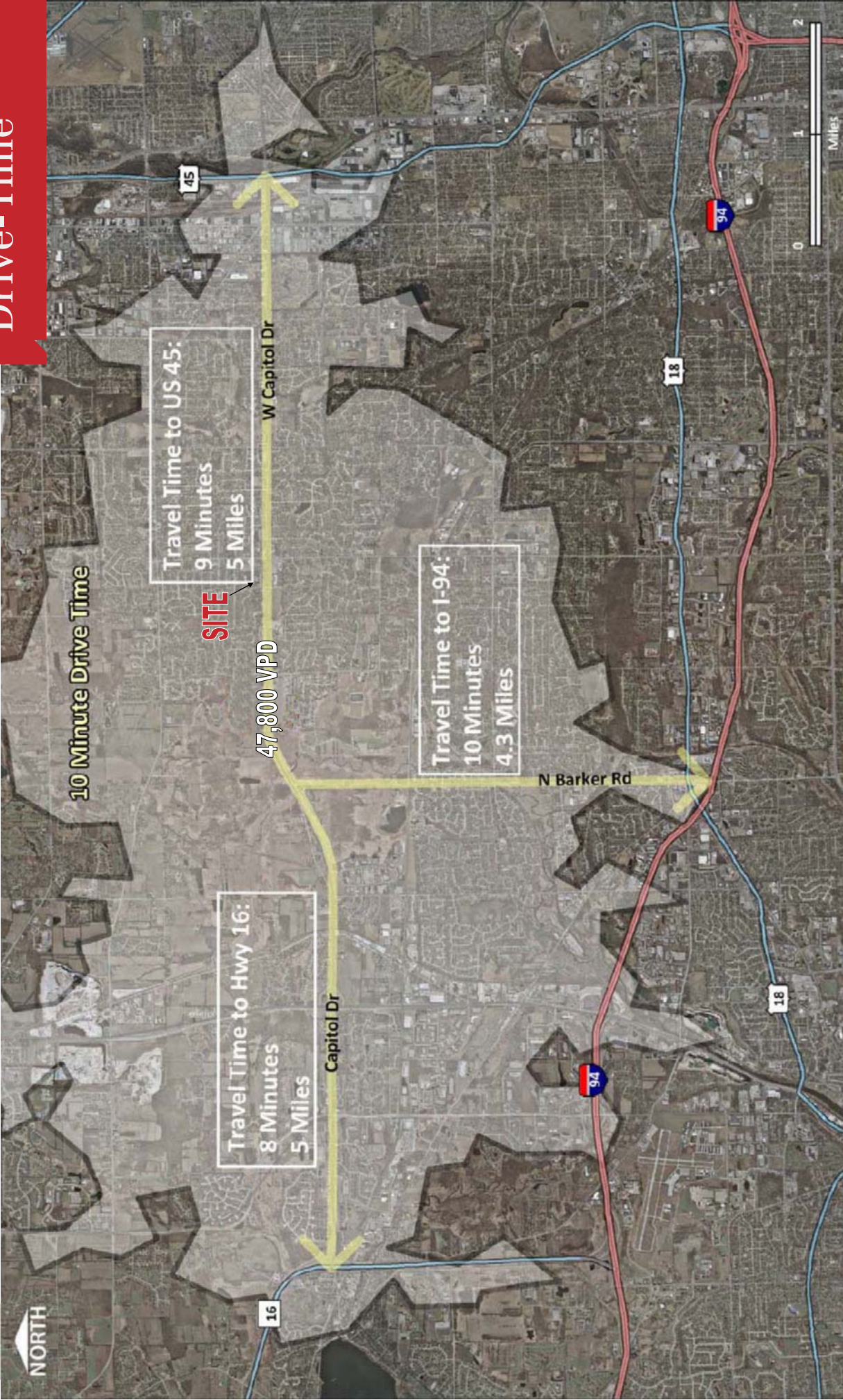
- 1) COORDINATES & BEARINGS REFERENCED TO THE SOUTH LINE OF THE SE 1/4 OF SEC. 4-7-20 ASSUMED TO BEAR S 88°28'23" E, AS PUBLISHED BY SEWRPC, NAD 1927.
- 2) OWNER: ANCHORBANK FSB C/O COLLIERS INTERNATIONAL, 1243 N 10TH ST. STE. 300, MILWAUKEE, WI 53205
SUBDIVIDER: TENDICK BUSINESS GROUP LLC, W305 N2784 FOXWOOD CT., PEWAUKEE, WI 53072
- 3) TAX KEY NO.: BRC 1024-997-005, ADDRESS: 17400 W. CAPITOL DRIVE
- 4) DISTANCES MEASURED TO THE NEAREST 0.01'. ANGLES MEASURED TO THE NEAREST 01".

WDOT RIGHT-OF-WAY PLAT PROJECT NO. 2025-2-21 (tie on Sheet 4)
CENTERLINE CAPTO. DRIV. 587°48'07"E (586°38'05"E, 774.14')

PROJECT NUMBER 15438 DRAFTED BY BAIBA M ROZITE 8-11-2015

Sheet 1 of 9

Drive-Time



State of Wisconsin Broker Disclosure to Non-Residential Customers

Prior to negotiating on your behalf the Broker must provide you the following disclosure statement.

BROKER DISCLOSURE TO CUSTOMERS

You are the customer of the broker. The broker is either an agent of another party in the transaction or a subagent of another broker who is the agent of another party in the transaction. The broker, or a salesperson acting on behalf of the broker, may provide brokerage services to you. Whenever the broker is providing brokerage services to you, the broker owes you, the customer, the following duties:

- The duty to provide brokerage services to you fairly and honestly.
- The duty to exercise reasonable skill and care in providing brokerage services to you.
- The duty to provide you with accurate information about market conditions within a reasonable time if you request it, unless disclosure of the information is prohibited by law.
- The duty to disclose to you in writing certain material adverse facts about a property, unless disclosure of the information is prohibited by law (see "Definition of Material Adverse Facts" below).
- The duty to protect your confidentiality. Unless the law requires it, the broker will not disclose your confidential information or the confidential information of other parties (see "Confidentiality Notice To Customers" below).
- The duty to safeguard trust funds and other property the broker holds.
- The duty, when negotiating, to present contract proposals in an objective and unbiased manner and disclose the advantages and disadvantages of the proposals.

Please review this information carefully. A broker or salesperson can answer your questions about brokerage services, but if you need legal advice, tax advice, or a professional home inspection, contact an attorney, tax advisor, or home inspector.

This disclosure is required by section 452.135 of the Wisconsin statutes and is for information only. It is a plain-language summary of a broker's duties to a customer under section 452.133 (1) of the Wisconsin statutes.

CONFIDENTIALITY NOTICE TO CUSTOMERS

Broker will keep confidential any information given to broker in confidence, or any information obtained by broker that he or she knows a reasonable person would want to be kept confidential unless the information must be disclosed by law or you authorize the broker to disclose particular information. A broker shall continue to keep the information confidential after broker is no longer providing brokerage services to you. The following information is required to be disclosed by law.

Wisconsin law requires all real estate licensees to give the following information about brokerage services to prospective customers.

1. Material adverse facts, as defined in section 452.01 (5g) of the Wisconsin statutes (see "definition of material adverse facts" below).
2. Any facts known by the broker that contradict any information included in a written inspection report on the property or real estate that is the subject of the transaction. To ensure that the broker is aware of what specific information you consider confidential, you may list that information below. At a later time, you may also provide the broker with other information that you consider to be confidential.

CONFIDENTIAL INFORMATION: _____

NON-CONFIDENTIAL INFORMATION (The following information may be disclosed by Broker): _____

(INSERT INFORMATION YOU AUTHORIZE THE BROKER TO DISCLOSE SUCH AS FINANCIAL QUALIFICATION INFORMATION)

CONSENT TO TELEPHONE SOLICITATION

I/We agree that the Broker and any affiliated settlement service providers (for example, a mortgage company or title company) may call our/my home or cell phone numbers regarding issues, goods and services related to the real estate transaction until I/we withdraw this consent in writing. List Home/Cell Numbers: _____

SEX OFFENDER REGISTRY

Notice: You may obtain information about the sex offender registry and persons registered with the registry by contacting the Wisconsin Department of Corrections on the Internet at <http://offender.doc.state.wi.us/public/> or by phone at 608-240-5830.

DEFINITION OF MATERIAL ADVERSE FACTS

A "material adverse fact" is defined in Wis. Stat. 452.01 (5g) as an adverse fact that a party indicates is of such significance, or that is generally recognized by a competent licensee as being of such significance to a reasonable party that it affects or would affect the party's decision to enter into a contract or agreement concerning a transaction or affects or would affect the party's decision about the terms of such a contract or agreement. An "adverse fact" is defined in Wis. Stat. 452.01 (1e) as a condition or occurrence that a competent licensee generally recognizes will significantly and adversely affect the value of the property, significantly reduce the structural integrity of improvements to real estate, or present a significant health risk to occupants of the property, or information that indicates that a party to a transaction is not able to or does not intend to meet his or her obligations under a contract or agreement made concerning the transaction.

No representation is made as to the legal validity of any provision or the adequacy of any provision on any specific transaction