

HOME

HIGHLIGHTS

AMENITIES

ADJACENT TRAIL SYSTEM

SCHOOL DISTRICT

For more information, please contact:

Whitney E. Kerr, Sr., SIOR, CCIM, CRE
Director
+1 816 412 0264
whitney.kerrsr@cushwake.com

4600 Madison Avenue, Suite 800
Kansas City, MO 64112
Main +1 816 221 2200
Fax +1 816 842 2798
cushmanwakefield.com

Property Highlights

- Outstanding linkage to all of KC via I-70, I-470, and Highway 40
- Adjacent to several lakes with boating and fishing
- Adjacent to several parks and trails with hiking and picnics
- Close to fine shopping and many great restaurants
- Located in superb Blue Springs School District, one of Missouri's top rated school districts
- Demographics are excellent for active seniors planning to downsize



For more information, please contact:

Whitney E. Kerr, Sr., SIOR, CCIM, CRE
Director
+1 816 412 0264
whitney.kerrsr@cushwake.com

4600 Madison Avenue, Suite 800
Kansas City, MO 64112
Main +1 816 221 2200
Fax +1 816 842 2798
cushmanwakefield.com

FOR SALE
Hwy 40 & I-470, Lee's Summit, MO



HOME

HIGHLIGHTS

AMENITIES

ADJACENT TRAIL SYSTEM

SCHOOL DISTRICT



For more information, please contact:

Whitney E. Kerr, Sr., SIOR, CCIM, CRE
Director
+1 816 412 0264
whitney.kerrsr@cushwake.com

4600 Madison Avenue, Suite 800
Kansas City, MO 64112
Main +1 816 221 2200
Fax +1 816 842 2798
cushmanwakefield.com

Adjacent Trail System

The 14.7-mile Little Blue Trace is a multipurpose trail that follows the contours of the Little Blue River. The relatively flat trail is constructed of 10-foot wide compacted aggregate with some sections of concrete surfacing. It is part of the MetroGreen® greenway system plan. The Little Blue Trace Trail connects with the city of Independence, Missouri Street Trail System. The trail offers six trailheads with dedicated parking facilities. Jackson County is working in partnership with the city of Kansas City to extend the trail to Longview Lake. When completed, the trail will extend over 26 miles.

Terminal Points: Blue Mills Road and Phelps Road

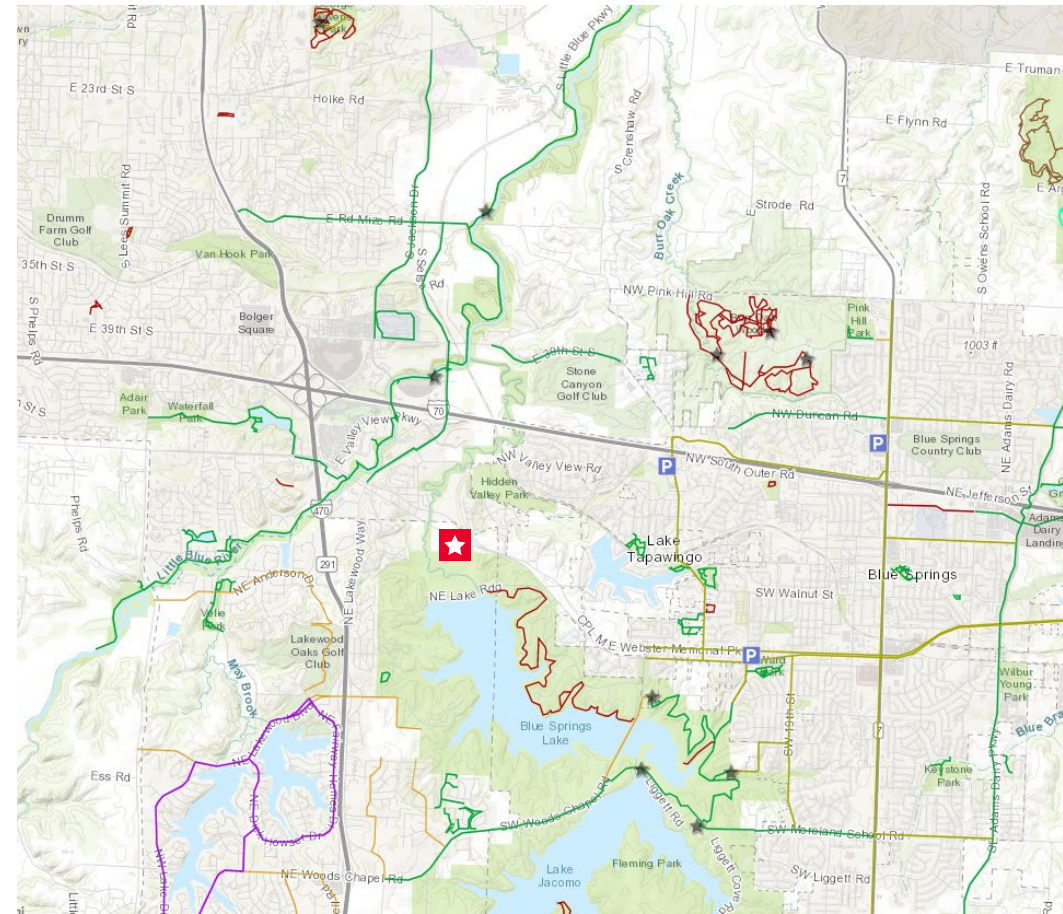
Length: 14.7 miles

Surface type: Crushed limestone aggregate, some concrete surfacing

Handicap accessible: Yes

Pets permitted: All dogs must be on 6' leash, no horses allowed

Dedicated parking: Blue Mills Road, Old Lexington Road (Ripley Junction), Bundschu Road, Necessary Road, Hartman Heritage Center



Source: City of Blue Springs, MO, City of Lees Summit, Jackson County, MO, Missouri Department of Conservation

For more information, please contact:

Whitney E. Kerr, Sr., SIOR, CCIM, CRE
Director
+1 816 412 0264
whitney.kerrsr@cushwake.com

4600 Madison Avenue, Suite 800
Kansas City, MO 64112
Main +1 816 221 2200
Fax +1 816 842 2798
cushmanwakefield.com

Blue Springs School District

The Blue Springs School District is dedicated to providing our students the greatest educational opportunities. We strive to assure all our students are prepared to take their place as productive, informed, and caring members of society. Our district is located on the eastern edge of Jackson County and covers a total of 58 square miles.

The District has received Accreditation with Distinction from the Missouri Department of Elementary and Secondary Education for 15 consecutive years.

Source: City of Blue Springs, MO School District

For more information, please contact:

Whitney E. Kerr, Sr., SIOR, CCIM, CRE
Director
 +1 816 412 0264
 whitney.kerrsr@cushwake.com

4600 Madison Avenue, Suite 800
 Kansas City, MO 64112
 Main +1 816 221 2200
 Fax +1 816 842 2798
 cushmanwakefield.com

100 % Annual Performance Report

Impacting Student Learning through Staff Learning

- BSSD Employs a highly qualified, diverse staff of over 1,900:
- Over 85% of teachers hold a master's degree or higher, including specialists and doctorates
- Over 65,000 Professional Development Hours accrued annually
- Teachers participate in Math/ELA (English Language Arts) Lab Schools - developing our own experts
- 43 Teachers have presented at a National Conference
- Summer Institute (UCM): 656 earned graduate credit
- First district in Missouri registered for all PLTW programs

Accomplished Staff

- 2015 Missouri Teacher of the Year, *Linda Glasgow*
- Missouri Agri-Science Teacher of the Year, *Craig Zwahlen*
- COMBAT's "Start Right, Stay Right Award," *Gina Oles*
Learning Forward Outstanding Instructional Leader, *Annette Seago*
- Missouri Cheerleading Coaches Administrator of the Year, *Tim Michael*
- Greater Kansas City Missouri Principals Association, *Charlie Belt*
- Greater Kansas City School Counselor Association Counseling Supervisor of the Year, *Norma Anderson*
- Greater Kansas City School Counselor Association Elementary Counselor of the Year, *Stacy Scalfaro*
- 85% of our teachers hold a master's degree or higher, including specialist and doctorate degrees
- 2016 Missouri Regional Teacher of the Year, *Morgan Payton*

School Amenities and Learning Advancements

- 13 elementary schools
- 4 middle schools
- 1 freshman center
- 2 high schools
- 1 alternative high school
- 1 early children education center
- 14,871 Student Enrollment

- Gifted education program
- Project Lead the Way
- Engineering (TSA)
- Computer Science
- Middle School Gateway
- Elementary Launch
- Wellness Center

- Trailblazer Collegiate Academy Associates Degree Program
- Coder DOJO - K-8 computer coding program
- Project ZAM - early childhood education through partnership with the KC Zoo
- Deaf/Hard of Hearing Program
- Over 200 School and Business Partnerships