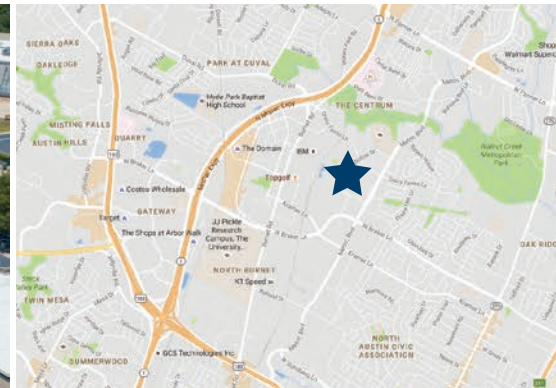




# STONEHOLLOW 1

11525-1 Stonehollow Drive - Austin, TX 78758



## Available Space

Suite	RSF
135	4,050

## Building Features



Open, Configurable Office Space



100% HVAC



24' Clear Height



Rear Loading, 1 Dock High Door



5 Mins. from Austin's Domain District  
•50+ Restaurants  
•775+ Hotel Rooms  
•2,700+ Apt. Units



Sits in North Austin - Home to many B2B Companies, Breweries, and Crossfit/ Fitness Gyms

**DAVIS BASS**

(512) 538-1040  
bass@hpitx.com

**MORRIS GREEN**

(512) 538-0081  
mgreen@hpitx.com

No warranty or representation, expressed or implied, is made as to the accuracy of the information contained herein, and same is submitted subject to errors, omissions, change of price, rental or other conditions, withdrawal without notice, and to any special listing conditions imposed by the principals.



# STONEHOLLOW 1

11525-1 Stonehollow Drive - Austin, TX 78758

**SUITE 135**

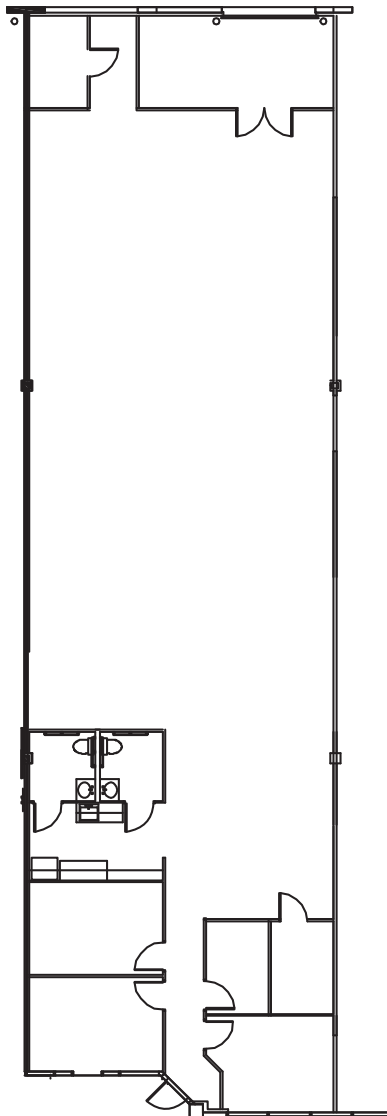
AVAILABLE NOW

**4,050 SF**

AVAILABLE SF

**OPEN OFFICE**

SPACE TYPE



**DAVIS BASS**

(512) 538-1040

[bass@hpitx.com](mailto:bass@hpitx.com)

**MORRIS GREEN**

(512) 538-0081

[mgreen@hpitx.com](mailto:mgreen@hpitx.com)

No warranty or representation, expressed or implied, is made as to the accuracy of the information contained herein, and same is submitted subject to errors, omissions, change of price, rental or other conditions, withdrawal without notice, and to any special listing conditions imposed by the principals.