

OFFICE FOR LEASE

Approximately 12,755 SF on the 6th floor

PROPERTY FEATURES

- Prominent historic office building in the Central Business District
- On-site property management and security
- Located adjacent to 4th Street Live! and near courthouse and financial district
- Other tenants include Chase Bank, Regus and Conifer Health Solutions
- On-site restaurants include Qdoba, Dunkin Donuts, Zoup, Potbelly Sandwich Shop and Smashburger

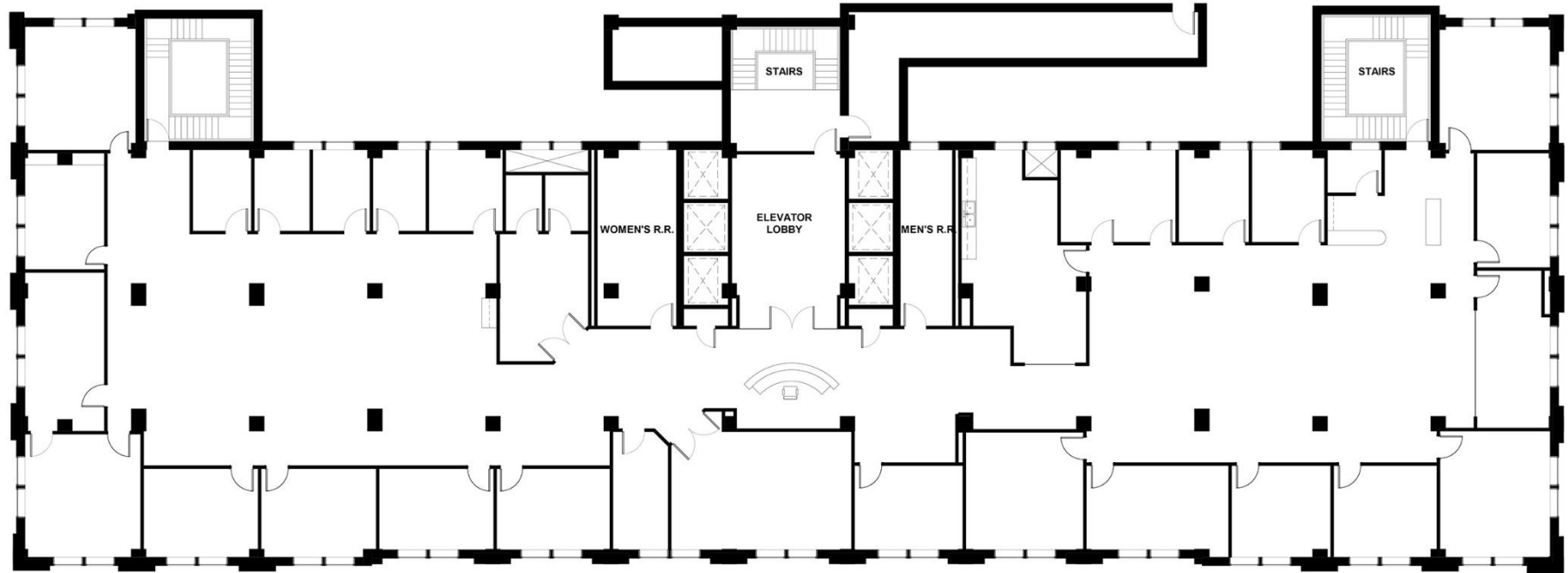


MARION E. TAYLOR BUILDING

For more information, please contact:

EP SCHERER
Senior Director
502 589 5150 ext. 234
epscherer@commercialkentucky.com

333 E. Main Street, Suite 510
Louisville, KY 40202
phone: +1 502 589 5150
www.CommercialKentucky.com



Full Floor As Built
1/8" = 1'-0"

Floor Plan

For more information, please contact:

EP SCHERER
Senior Director
502 589 5150 ext. 234
epscherer@commercialkentucky.com

333 E. Main Street, Suite 510
Louisville, KY 40202
phone: +1 502 589 5150
www.CommercialKentucky.com