

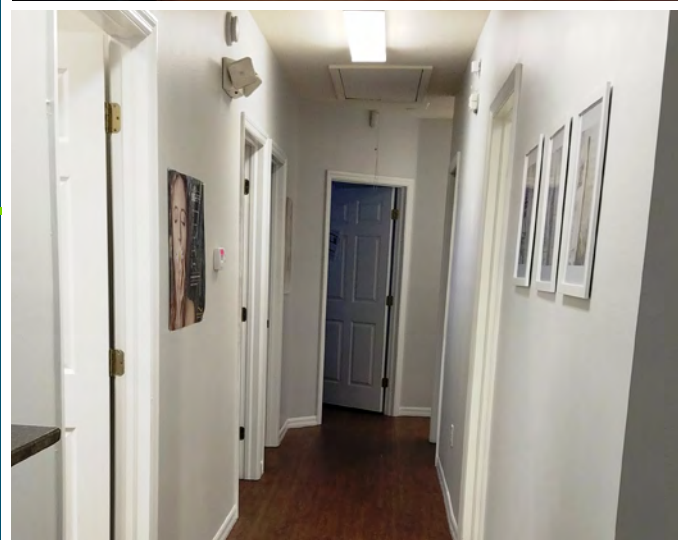
For Lease



W. Hillsborough - Oldsmar Gateway

13648 W. Hillsborough Ave. | Tampa, FL 33635

- 1250 SF of turnkey medical space
- HIPAA compliant - privacy check in/check out
- Sinks and cabinetry in two exam rooms - large waiting room
- Superior visibility pylon signage - daily traffic count in excess of 30,000
- Central location provides fast easy access to Pinellas, Pasco and TIA
- Lease Rate: \$17.00/SF Modified Gross



THERESA MARGARIS

T: 727-238-3876 x305

M: 813-765-0948

tmargaris@holdthyssen.com

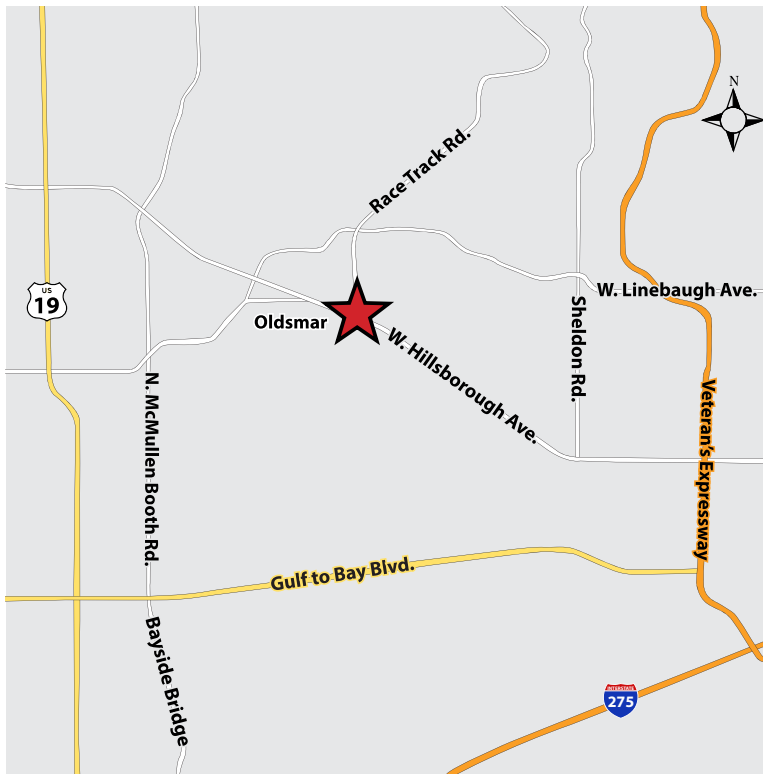
28163 U.S. Highway 19 N.

Suite 102

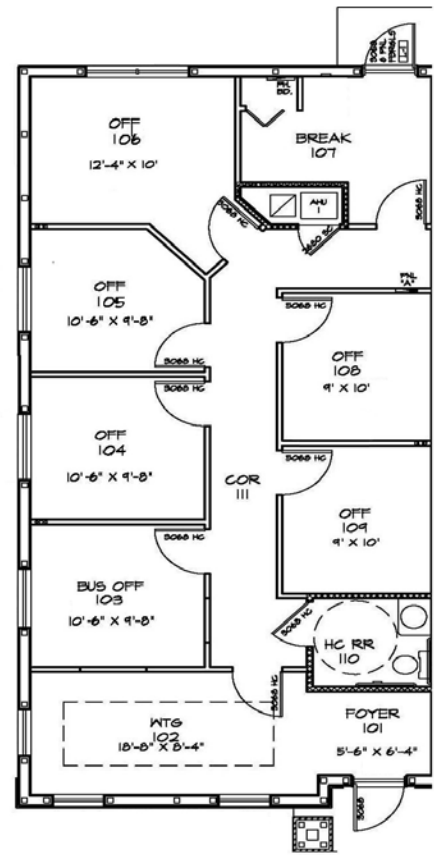
Clearwater, FL 33761

www.holdthyssen.com

LOCATION



FLOOR PLAN



AERIAL Covington Professional Park



FOR MORE INFORMATION:



THERESA MARGARIS
tmargaris@holdthysen.com
T: 727-238-3876 x305
M: 813-765-0948

28163 U.S. Highway 19 N.
Suite 102
Clearwater, FL 33761



www.holdthysen.com