

FOR LEASE

1005 Rosecrans Street
San Diego, CA 92106



CAPITAL GROWTH
PROPERTIES, INC.

Office Space
Point Loma



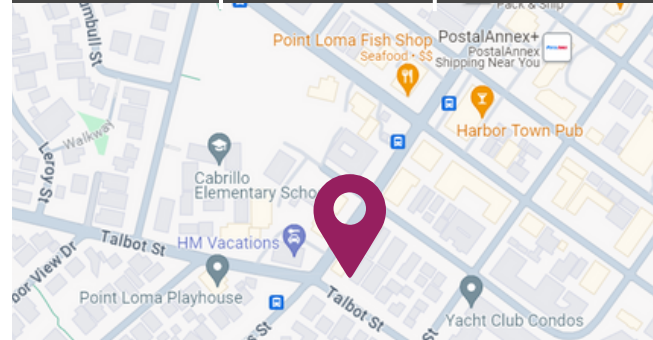
Corner of Talbot & Rosecrans Streets

PROPERTY HIGHLIGHTS

- ✓ Close to restaurants & abundant conveniences
- ✓ Upscale residential & trade area
- ✓ Close proximity to SDYC, Liberty Station, & San Diego Bay
- ✓ Light/bright office with pleasant views (windows on both sides)
- ✓ Modern, high-beamed, exposed ceilings
- ✓ One glass-enclosed private office
- ✓ Kitchenette

AVAILABLE SPACES

SUITE	SF	RATE
201	1,305	\$3.25 PSF +GROSS



FOR LEASE

1005 Rosecrans Street
San Diego, CA 92106



CAPITAL GROWTH
PROPERTIES, INC.

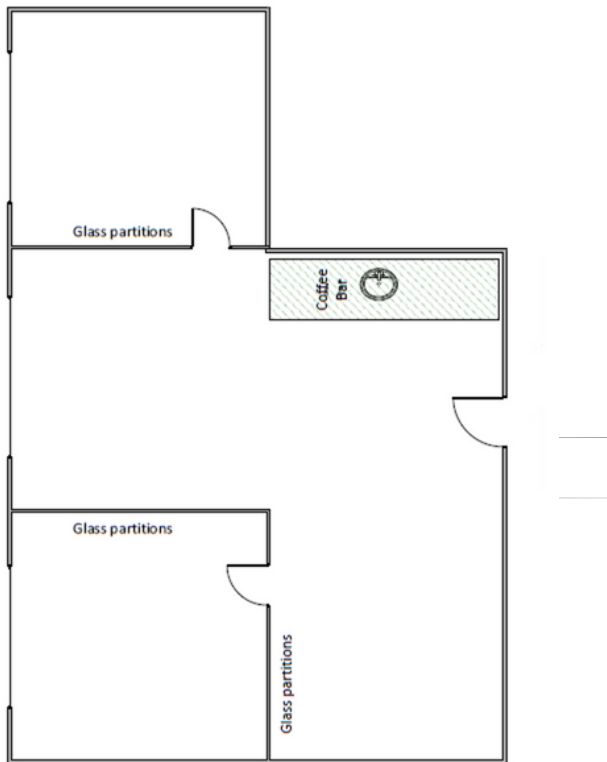


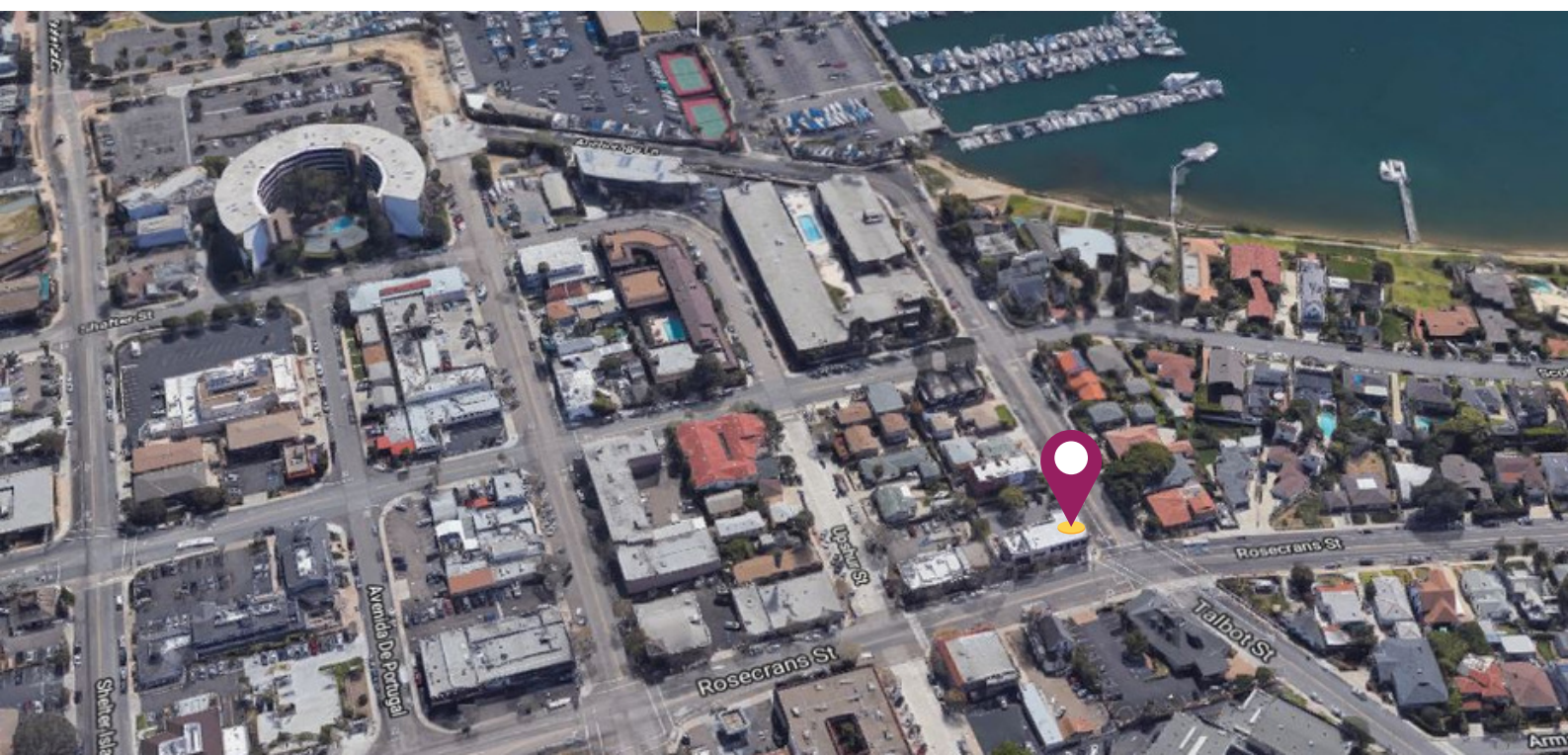
FOR LEASE

1005 Rosecrans Street
San Diego, CA 92106



CAPITAL GROWTH
PROPERTIES, INC.





It's a "lifestyle" choice.



 **1005 Rosecrans Street, San Diego, CA – 92106**



Jill Morton


Senior Vice President

jmorton@cgpinc.com

619.955.2877

Cal BRE Lic. 00868254

Capital Growth Properties, Inc.

 1120 Silverado Street, Suite 200
La Jolla, CA 92037

 858.729.9300

 www.cgpinc.com

 [@cgpinc](https://www.instagram.com/cgpinc)

www.cgpinc.com