



300 COTTONWOOD AVE HARTLAND, WI 53029

Features

Join Endters Sports Grill and other Hartland office professionals in a convenient and beautiful setting overlooking Nixon Park. The popular Ice Age Trail and Splash Pad attract many to the area, as well as new neighboring businesses including Beer Snobs and Board & Brush. Large parking lot and street parking provide ample spaces for employees and visitors. River views available. See floor plans for more details on current space available. Under NEW management that is updating image and keeping the property operating more efficiently.

Divisible: Yes

Park/Complex: Bark River Plaza

Zoning: B-3

Restrooms: 1 Men's & 1 Women's per floor

Traffic Count: 6,100 VPD

Occupancy: Immediate

Listing: 4276



Office For Lease

Total SF: 18,250

Available: 7,285 SF

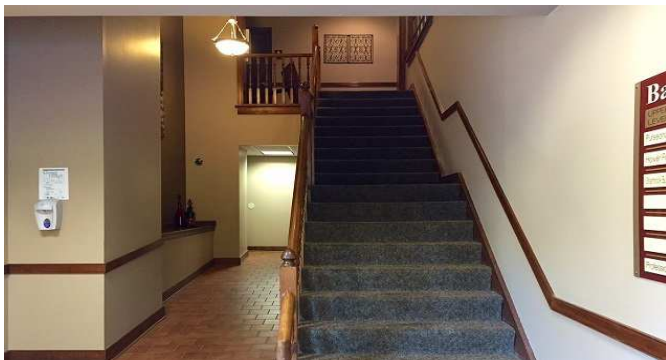
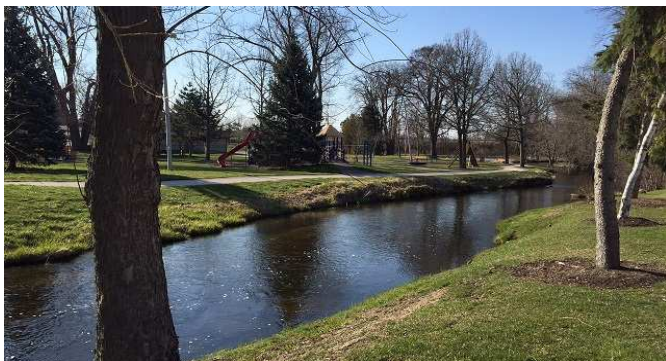
Min Contiguous SF: 1,257

Max Contiguous SF: 3,281

Gross: \$10.00 - \$12.00

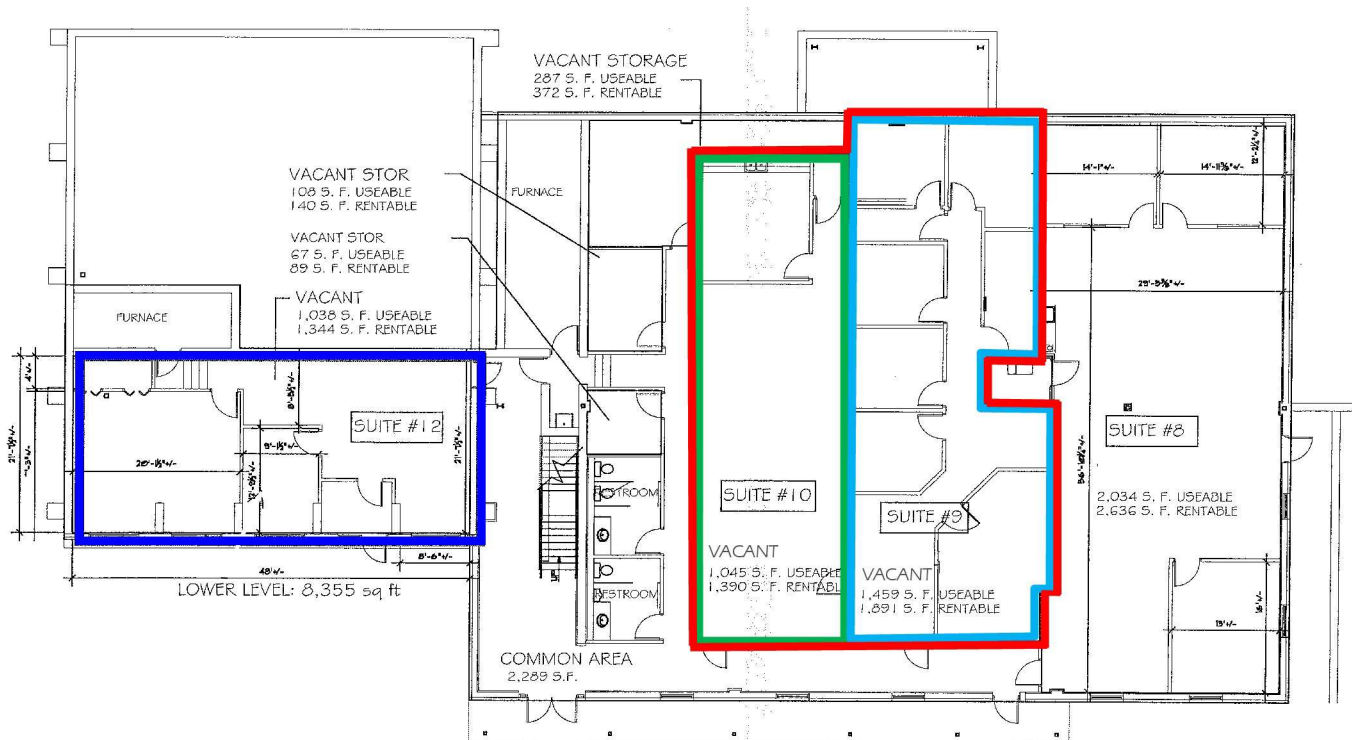
Mike Judson, Owner/Sales Agent
262-746-3480
mjudson@judsonrealestate.com

Judson & Associates, S.C.
1285 Sunnyridge Road
Pewaukee, WI 53072



Mike Judson, Owner/Sales Agent
262-746-3480
mjudson@judsonrealestate.com

Judson & Associates, S.C.
1285 Sunnyridge Road
Pewaukee, WI 53072



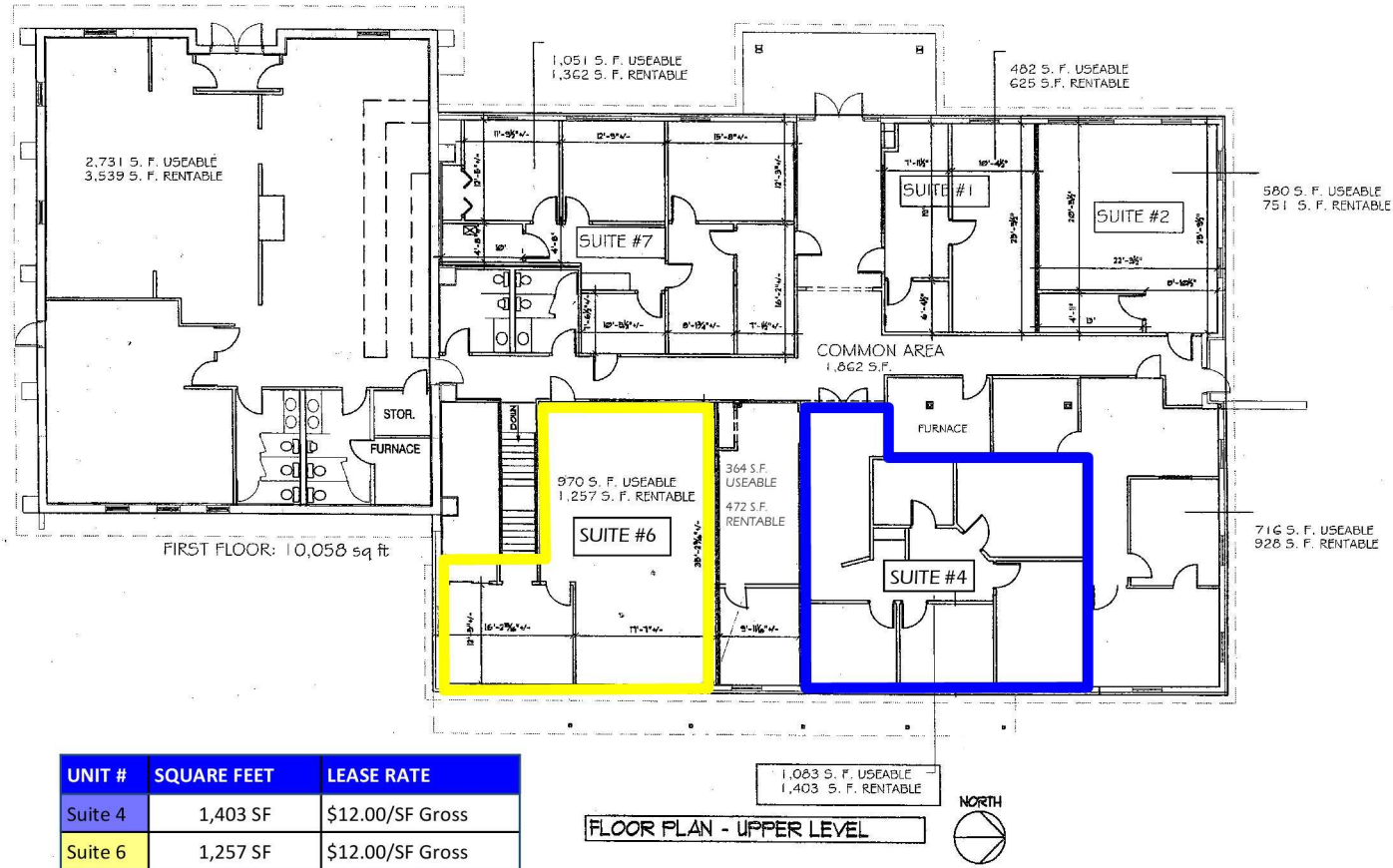
UNIT #	SQUARE FEET	LEASE RATE
Suite 9	1,891 SF	\$10.00/SF Gross
Suite 10	1,390 SF	\$10.00/SF Gross
Suite 9,10	3,281 SF	\$10.00/SF Gross
Suite 12	1,344 SF	\$12.00/SF Gross

FLOOR PLAN - LOWER LEVEL



Mike Judson, Owner/Sales Agent
262-746-3480
mjudson@judsonrealestate.com

Judson & Associates, S.C.
1285 Sunnyridge Road
Pewaukee, WI 53072



UNIT #	SQUARE FEET	LEASE RATE
Suite 4	1,403 SF	\$12.00/SF Gross
Suite 6	1,257 SF	\$12.00/SF Gross

Mike Judson, Owner/Sales Agent
262-746-3480
mjudson@judsonrealestate.com

Judson & Associates, S.C.
1285 Sunnyridge Road
Pewaukee, WI 53072



WISCONSIN REALTORS® ASSOCIATION
4801 Forest Run Road
Madison, Wisconsin 53704

Judson & Associates SC

BROKER DISCLOSURE TO NON-RESIDENTIAL CUSTOMERS

1 Prior to negotiating on your behalf the Broker must provide you the following disclosure statement:
2 **BROKER DISCLOSURE TO CUSTOMERS**
3 You are a customer of the broker. The broker is either an agent of another party in the transaction or a subagent of another broker
4 who is the agent of another party in the transaction. The broker, or salesperson acting on behalf of the broker, may provide
5 brokerage services to you. Whenever the broker is providing brokerage services to you, the broker owes you, the customer, the
6 following duties:
7 ■ The duty to provide brokerage services to you fairly and honestly.
8 ■ The duty to exercise reasonable skill and care in providing brokerage services to you.
9 ■ The duty to provide you with accurate information about market conditions within a reasonable time if you request it, unless
10 disclosure of the information is prohibited by law.
11 ■ The duty to disclose to you in writing certain material adverse facts about a property, unless disclosure of the information is
12 prohibited by law (See Lines 47-55).
13 ■ The duty to protect your confidentiality. Unless the law requires it, the broker will not disclose your confidential information or the
14 confidential information of other parties (See Lines 22-39).
15 ■ The duty to safeguard trust funds and other property the broker holds.
16 ■ The duty, when negotiating, to present contract proposals in an objective and unbiased manner and disclose the advantages and
17 disadvantages of the proposals.
18 Please review this information carefully. A broker or salesperson can answer your questions about brokerage services, but if you
19 need legal advice, tax advice, or a professional home inspection, contact an attorney, tax advisor, or home inspector.
20 This disclosure is required by section 452.135 of the Wisconsin statutes and is for information only. It is a plain-language summary of
21 a broker's duties to a customer under section 452.133 (1) of the Wisconsin statutes.
22 **CONFIDENTIALITY NOTICE TO CUSTOMERS**
23 **BROKER WILL KEEP CONFIDENTIAL ANY INFORMATION GIVEN TO BROKER IN CONFIDENCE, OR ANY INFORMATION**
24 **OBTAINED BY BROKER THAT HE OR SHE KNOWS A REASONABLE PERSON WOULD WANT TO BE KEPT CONFIDENTIAL,**
25 **UNLESS THE INFORMATION MUST BE DISCLOSED BY LAW OR YOU AUTHORIZE THE BROKER TO DISCLOSE PARTICULAR**
26 **INFORMATION. A BROKER SHALL CONTINUE TO KEEP THE INFORMATION CONFIDENTIAL AFTER BROKER IS NO LONGER**
27 **PROVIDING BROKERAGE SERVICES TO YOU.**
28 **THE FOLLOWING INFORMATION IS REQUIRED TO BE DISCLOSED BY LAW:**
29 1. **MATERIAL ADVERSE FACTS, AS DEFINED IN SECTION 452.01 (5g) OF THE WISCONSIN STATUTES (SEE LINES 47-55),**
30 2. **ANY FACTS KNOWN BY THE BROKER THAT CONTRADICT ANY INFORMATION INCLUDED IN A WRITTEN INSPECTION**
31 **REPORT ON THE PROPERTY OR REAL ESTATE THAT IS THE SUBJECT OF THE TRANSACTION.**
32 **TO ENSURE THAT THE BROKER IS AWARE OF WHAT SPECIFIC INFORMATION YOU CONSIDER CONFIDENTIAL, YOU MAY LIST**
33 **THAT INFORMATION BELOW (SEE LINES 35-36). AT A LATER TIME, YOU MAY ALSO PROVIDE THE BROKER WITH OTHER**
34 **INFORMATION YOU CONSIDER TO BE CONFIDENTIAL.**
35 **CONFIDENTIAL INFORMATION:**
36 _____
37 **NON-CONFIDENTIAL INFORMATION (The following information may be disclosed by Broker):**
38 _____
39 **(INSERT INFORMATION YOU AUTHORIZE THE BROKER TO DISCLOSE SUCH AS FINANCIAL QUALIFICATION INFORMATION.)**
40 **CONSENT TO TELEPHONE SOLICITATION**
41 **I/We agree that the Broker and any affiliated settlement service providers (for example, a mortgage company or title company) may**
42 **call our/my home or cell phone numbers regarding issues, goods and services related to the real estate transaction until I/We**
43 **withdraw this consent in writing. List Home/Cell Numbers:**
44 **SEX OFFENDER REGISTRY**
45 **Notice: You may obtain information about the sex offender registry and persons registered with the registry by contacting the**
46 **Wisconsin Department of Corrections on the Internet at: <http://offender.doc.state.wi.us/public/> or by phone at 877-234-0085.**
47 **DEFINITION OF MATERIAL ADVERSE FACTS**
48 **a "material adverse fact" is defined in Wis. Stat. § 452.01 (5g) as an adverse fact that a party indicates is of such significance, or that**
49 **is generally recognized by a competent licensee as being of such significance to a reasonable party, that it affects or would affect**
50 **the party's decision to enter into a contract or agreement concerning a transaction or affects or would affect the party's decision**
51 **about the terms of such a contract or agreement. An "adverse fact" is defined in Wis. Stat. § 452.01 (1e) as a condition or occurrence**
52 **that a competent licensee generally recognizes will significantly and adversely affect the value of the property, significantly reduce**
53 **the structural integrity of improvements to real estate, or present a significant health risk to occupants of the property; or information**
54 **that indicates that a party to a transaction is not able to or does not intend to meet his or her obligations under a contract or**
55 **agreement made concerning the transaction.**

No representation is made as to the legal validity of any provision or the adequacy of any provision in any specific transaction.

Copyright 2006 by Wisconsin REALTORS® Association
Drafted by Attorney Richard J. Staff judson.zfxgunterholzner

Judson & Associates SC
1285 Sunnyside Rd, Pewaukee WI 53072-3817
Phone: (262) 695-8800
Fax: (262) 695-8801



Mike Judson, Owner/Sales Agent
262-746-3480
mjudson@judsonrealstate.com

Judson & Associates, S.C.
1285 Sunnyside Road
Pewaukee, WI 53072