

# 1420 Willow Avenue

Hoboken, New Jersey

1,872 SF | RETAIL SPACE FOR LEASE



**David Townes** / [david.townes@cushwake.com](mailto:david.townes@cushwake.com) / 917 993 5515  
**Neil Seth** / [neil.seth@cushwake.com](mailto:neil.seth@cushwake.com) / 212 841 5063  
**Alana Friedman** / [alana.friedman@cushwake.com](mailto:alana.friedman@cushwake.com) / 201 508 5258



©2018 Cushman & Wakefield. All rights reserved. The information contained in this communication is strictly confidential. This information has been obtained from sources believed to be reliable but has not been verified. NO WARRANTY OR REPRESENTATION, EXPRESS OR IMPLIED, IS MADE AS TO THE CONDITION OF THE PROPERTY (OR PROPERTIES) REFERENCED HEREIN OR AS TO THE ACCURACY OR COMPLETENESS OF THE INFORMATION CONTAINED HEREIN, AND SAME IS SUBMITTED SUBJECT TO ERRORS, OMISSIONS, CHANGE OF PRICE, RENTAL OR OTHER CONDITIONS, WITHDRAWAL WITHOUT NOTICE, AND TO ANY SPECIAL LISTING CONDITIONS IMPOSED BY THE PROPERTY OWNER(S). ANY PROJECTIONS, OPINIONS OR ESTIMATES ARE SUBJECT TO UNCERTAINTY AND DO NOT SIGNIFY CURRENT OR FUTURE PROPERTY PERFORMANCE.

# 1420 Willow Avenue

Hoboken, New Jersey

**1,872 SF | RETAIL SPACE FOR LEASE**

**SECOND FLOOR:**

**1,872 SF**

**RENT: \$45 PSF**

**\$8.00 NNN**

**TERM: Negotiable**

**POSSESSION: Immediate**




**VEHICLES PER DAY:**

**15,000**

**COMMENTS:**

- New construction
- Main traffic road into Hoboken

## NEIGHBORHOOD DEMOGRAPHICS

	 POPULATION	 AVERAGE HOUSEHOLD INCOME	 DAYTIME POPULATION
1 Mile	95,579	\$116,864	67,202
2 Miles	228,972	\$101,846	185,365
3 Miles	390,572	\$99,395	352,032

## CO-TENANTS

West Elm, Gravity Vault, Tenaflly Pediatrics, SLT and Excel Physical Therapy

## NEIGHBORING TENANTS

New York Sports Club, Orale Mexican Kitchen, CVS pharmacy, Pilsener Haus & Biergarten, Rite Aid, Battaglia's Home, RuchCycling, Trader Joe's, Chase, CSBK-Clifton Savings Bank, Fit Foundry, Real Hot Yoga, City of Saints Coffee, Bow Tie Cinemas and Dino & Harry's Steakhouse

**David Townes** / david.townes@cushwake.com / 917 993 5515  
**Neil Seth** / neil.seth@cushwake.com / 212 841 5063  
**Alana Friedman** / alana.friedman@cushwake.com / 201 508 5258

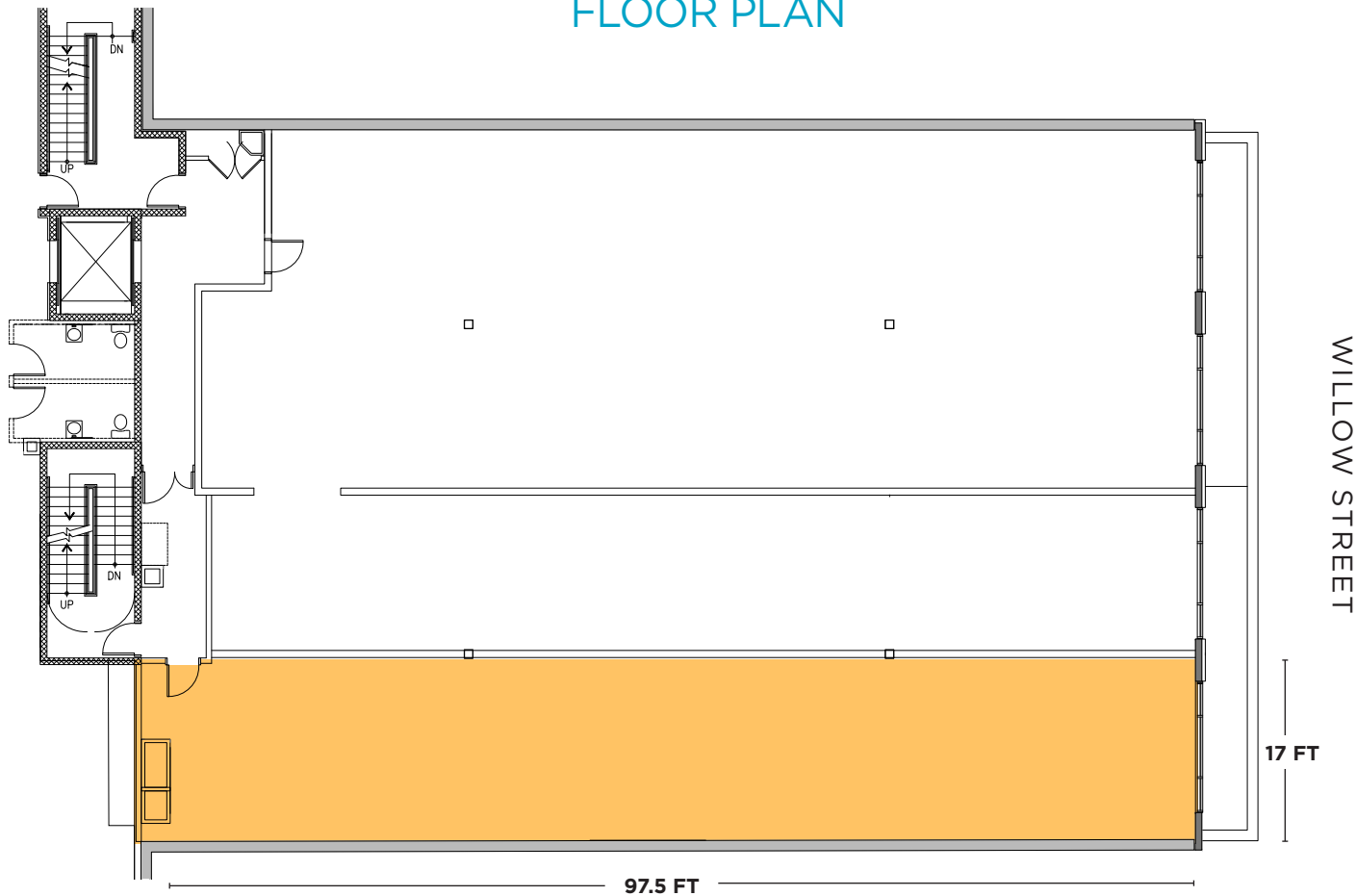


# 1420 Willow Avenue

Hoboken, New Jersey

1,872 SF | RETAIL SPACE FOR LEASE

## FLOOR PLAN



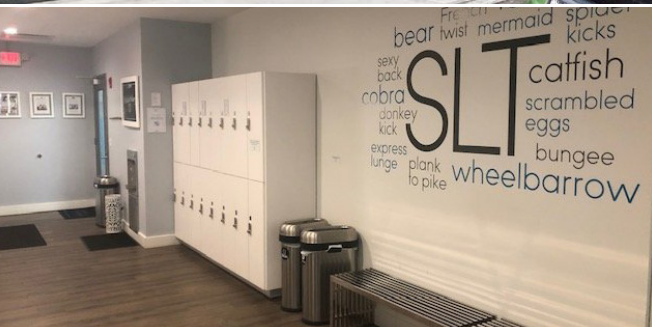
**David Townes** / [david.townes@cushwake.com](mailto:david.townes@cushwake.com) / 917 993 5515  
**Neil Seth** / [neil.seth@cushwake.com](mailto:neil.seth@cushwake.com) / 212 841 5063  
**Alana Friedman** / [alana.friedman@cushwake.com](mailto:alana.friedman@cushwake.com) / 201 508 5258



# 1420 Willow Avenue

Hoboken, New Jersey

1,872 SF | RETAIL SPACE FOR LEASE



David Townes / [david.townes@cushwake.com](mailto:david.townes@cushwake.com) / 917 993 5515  
Neil Seth / [neil.seth@cushwake.com](mailto:neil.seth@cushwake.com) / 212 841 5063  
Alana Friedman / [alana.friedman@cushwake.com](mailto:alana.friedman@cushwake.com) / 201 508 5258

