

FOR LEASE >



# 1,500 SF Office Space

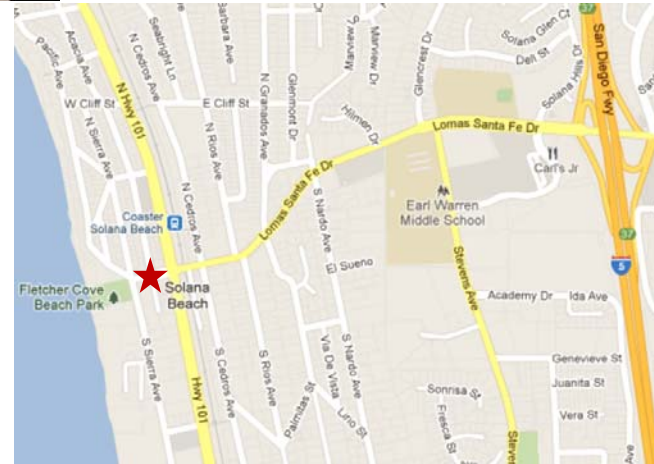
115 WEST PLAZA STREET, SOLANA BEACH, CA 92076



## Building Features

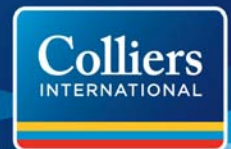
- > Approximately 1,500 SF of unique office space
- > Situated just off the Historic Hwy 101
- > Walking distance to Cedros Design District, restaurants, Fletcher Cove Beach Park and the beach
- > Excellent freeway access
- > Free surface parking
- > Available 11/1/2012

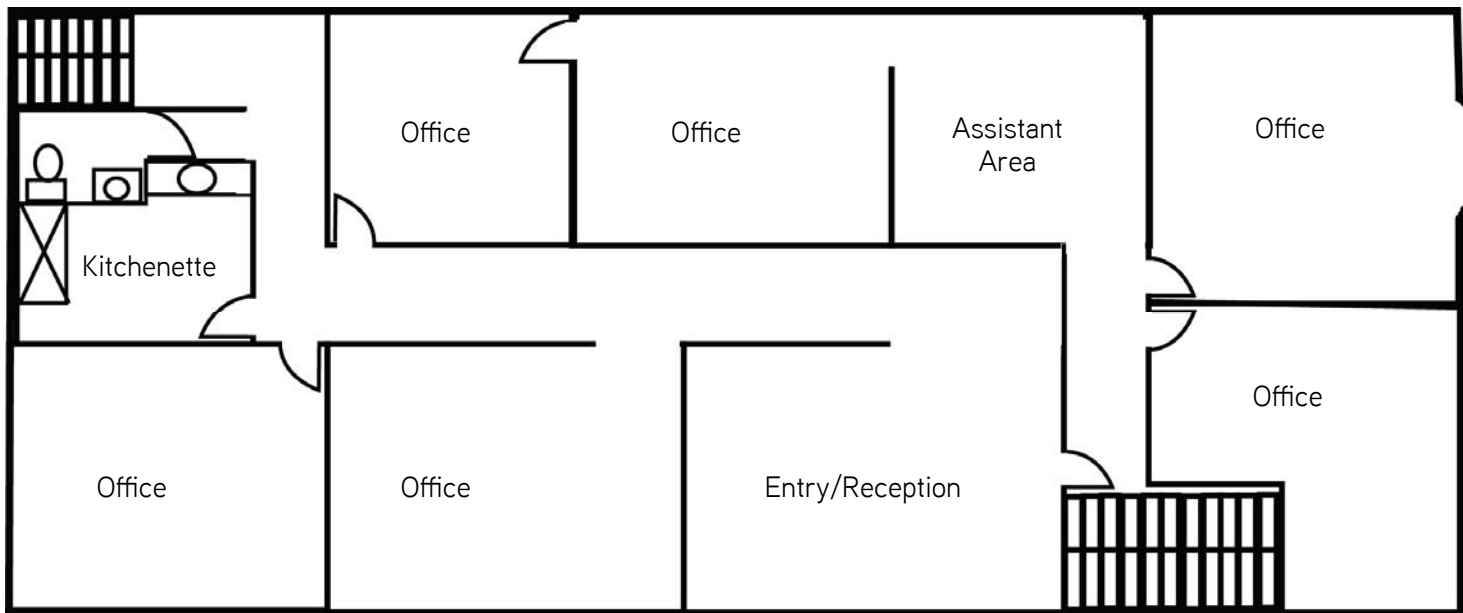
LEASE RATE: NEGOTIABLE



ERIK FAUCETT  
760 930 7920  
CARLSBAD, CA  
erik.faucett@colliers.com  
Lic# 01754632

STEVE WILLMORE  
760 930 7950  
CARLSBAD, CA  
steve.willmore@colliers.com  
Lic# 01148260





DEMOGRAPHICS	1 mi Ring	3 mi Ring	5 mi Ring
2011 Population	8,313	32,978	109,338
2016 Population	8,552	34,306	117,874
Avg HH Income	\$121,625	\$150,696	\$142,938
Daytime Population	9,852	35,942	108,705

Total Cars Per Day Lomas Santa Fe Drive & Hwy 101: 17,800 CPD

