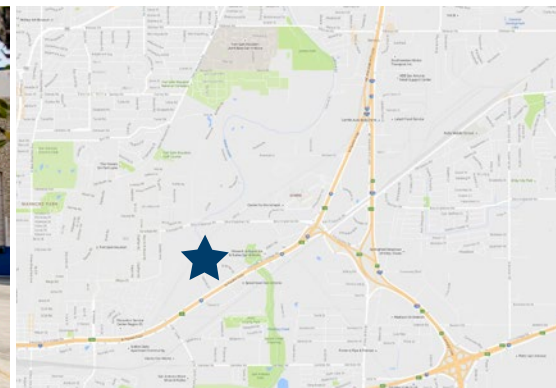




I-35 SAN ANTONIO 7

1920 SHIPMAN DRIVE - 78219



AVAILABLE SUITES

SUITE	SQ. FT.
1910	63,000

Divisible to 31,500 SF

SPACE FEATURES



95% Warehouse



5% Office



Front Loading,
Dock High Doors



20' Clear Height



1 Loading Ramp



40' x 40'
Column Spacing



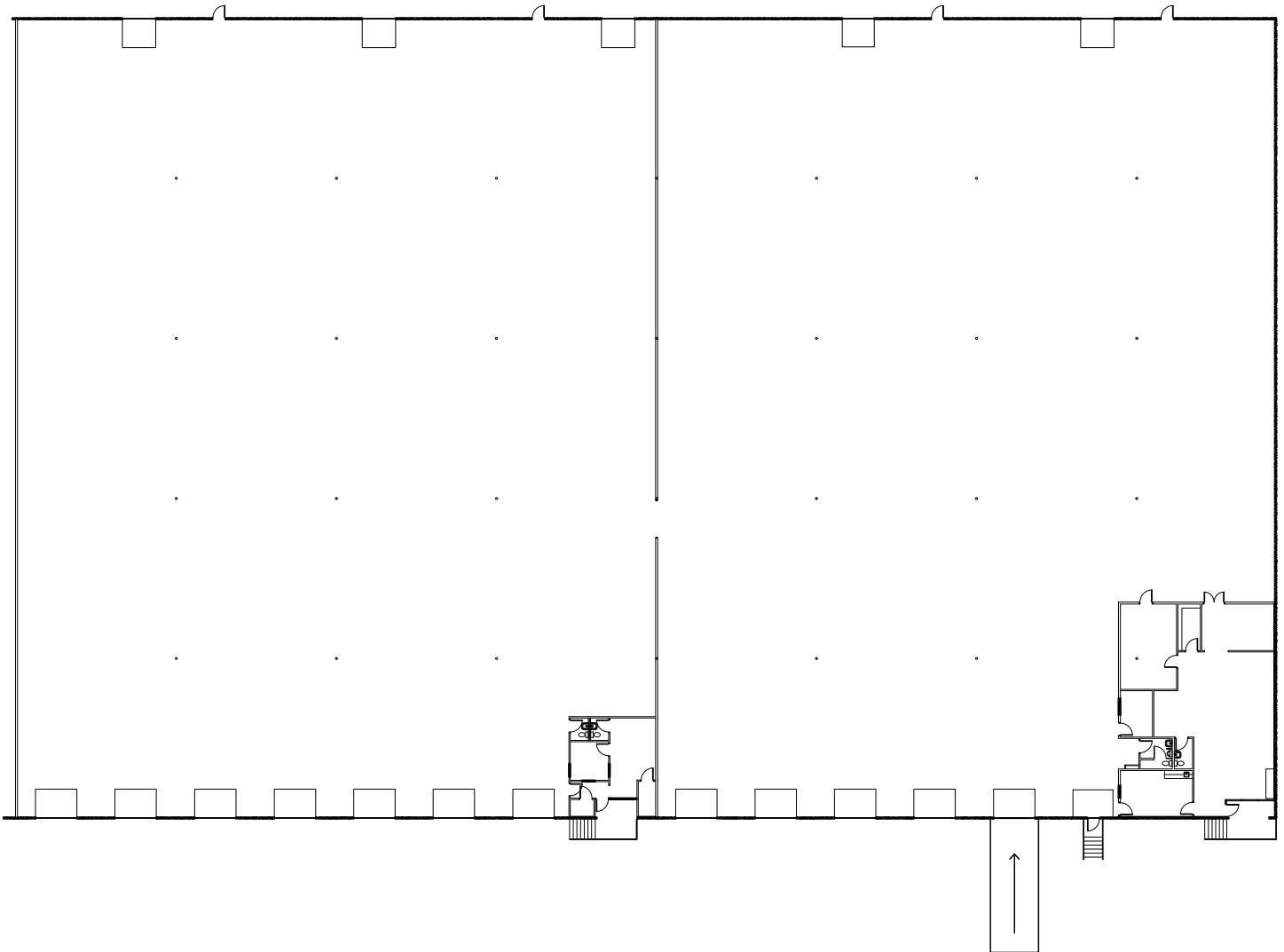
MORRIS GREEN
(512) 538-0081
mgreen@hpitx.com

No warranty or representation, expressed or implied, is made as to the accuracy of the information contained herein, and same is submitted subject to errors, omissions, change of price, rental or other conditions, withdrawal without notice, and to any special listing conditions imposed by the principals.

I-35 SAN ANTONIO 7

SUITE 1910 - SPACE PLAN

SUITE 1910
63,000 RSF



MORRIS GREEN
(512) 538-0081
mgreen@hpitx.com

No warranty or representation, expressed or implied, is made as to the accuracy of the information contained herein, and same is submitted subject to errors, omissions, change of price, rental or other conditions, withdrawal without notice, and to any special listing conditions imposed by the principals.