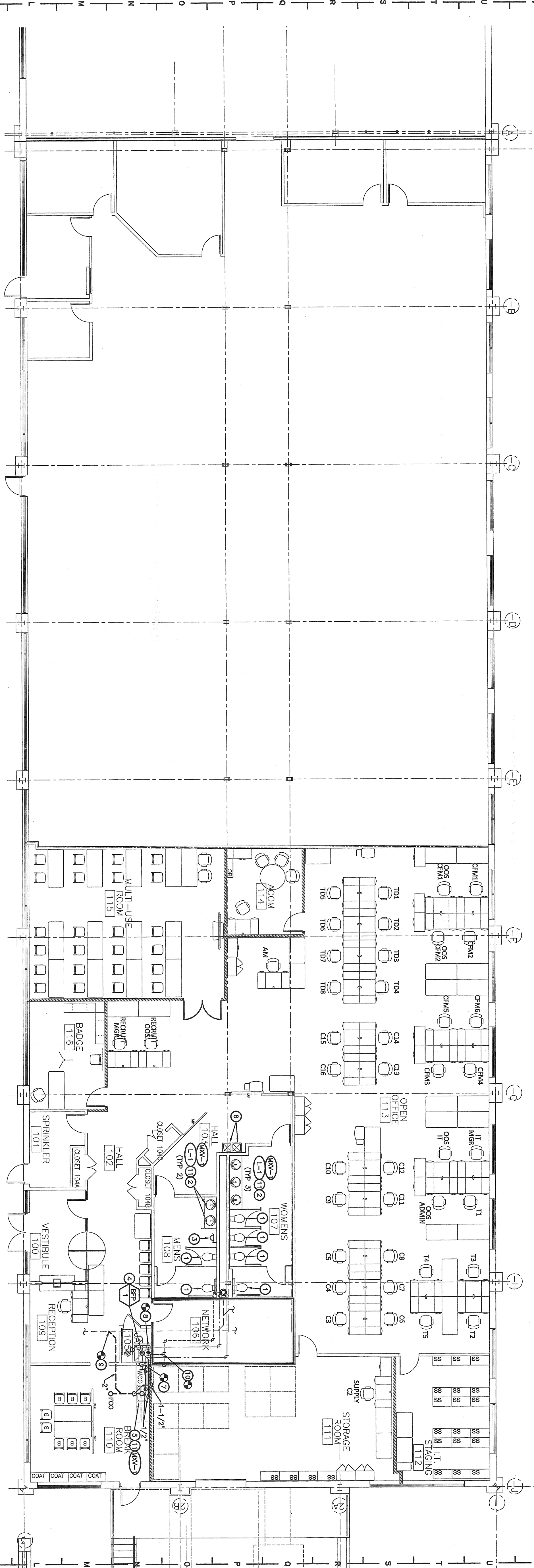


31 30 29 28 27 26 25 24 23 22 21 20 19 18 17 16 15 14 13 12 11 10 9 8 7 6 5 4 3 2 1



PLUMBING FLOOR PLAN
1/8"=1'-0"

MARK	MANUF.	MODEL NO.	DESCRIPTION
LVN-1	POWERS	SERIES LFLM493	THERMOSTATIC TEMPERING VALVE CONSTRUCTED OF SOLID BRASS. ALL INTERNAL COMPONENTS SHALL BE CORROSION-RESISTANT. VALVE SHALL FEATURE WINTER PROTECT. 1/2" INLETS, 1/2" OUTLET.
L-1	KOHLER	CAVTON K-2210 FT-90 OPTIMA	LAVATORY, VITREOUS CHINA, 19"x16" OVAL UNDER-MOUNT LAVATORY WITH FRONT OVERFLOW FACET. INTEGRATED SENSOR ACTIVATED HARD WIRED ELECTRONIC FAUCET FOR PRE-TEMPERED WATER. STRAINER DRAIN AND TRAPFACE WITH 1 1/4"x1 1/2" 17 GAUGE CHROME-PLATED SEMI-CAST BRASS P-TAP* WITH CLEANOUT AND WASTE ARM TO WALL WITH ESCUTCHEON. RISERS WITH LOOSE KEY ANGLE STOPS. PROVIDE MANUFACTURER'S WRITTEN RECOMMENDATIONS WITH CHECK VALVE AND AIRGATE VALVE INSTALLED SHOWN. PROVIDE MANUFACTURER'S WRITTEN RECOMMENDATIONS FOR CONNECTION TO COLD WATER SUPPLY LINE. OVERFLOW AND CAP THE ON NUMBER.

MARK NO.	MANUFACTURER	MODEL NO.	SIZE	MANUAL PRESSURE DROP	SERVING	REMARKS
BP-1	WATTS	LEBOFCOT	1/2"	4 PSI	INDUSTRIAL CLEAN SOAP DISPENSER	SEE NOTE 1-2

MARK	DESCRIPTION	C.W.	H.W.	WASTE	VENT	REMARKS
L-1	LAVATORY	1/2"	1/2"	1 1/2"	1-1/2"	UNDER MOUNT
S-1	BREAK RM SINK	1/2"	1/2"	2"	1-1/2"	TOP MOUNT

PLUMBING PLAN NOTES

- EXISTING WATER CLOSET TO REMAIN. CLEAN FIXTURE AND SCOPE.
- PROVIDE NEW FAUCETS, MIXING VALVE, STOP VALVE AND LAVATORY BASIN. PLUMBING CONNECTIONS AT WALL. WASTE AND VENT PIPING TO EXISTING OPERATIONAL AND INSPECT SANITARY PIPING FOR BLOCKAGE.
- EXISTING URINAL TO REMAIN. CLEAN FIXTURE AND SCOPE ASSOCIATED.
- EXISTING MOP BASIN TO REMAIN. CONNECT INDUSTRIAL SOAP DISPENSING SYSTEM TO FAUCET WITH THE BACKFLOW PREVENTER WATTS MODEL NO. BP-1. PROVIDE MANUFACTURER'S WRITTEN RECOMMENDATIONS WITH CHECK VALVE AND AIRGATE VALVE INSTALLED SHOWN. PROVIDE MANUFACTURER'S WRITTEN RECOMMENDATIONS FOR CONNECTION TO COLD WATER SUPPLY LINE. OVERFLOW AND CAP THE ON NUMBER.
- INSTALL NEW SINK, ROUTE 1/2" CW AND 1/2" HW TO FAUCET. PROVIDE MIXING VALVE (LVN-1) ON HW SUPPLY TO FAUCET. ROUTE 2" WASTE AND 1-1/2" VENT FOR FUTURE. ROUTE WASTE AND VENT TO NEAREST WATER TO NEAREST PIPE SIZE OF EQUAL OR LARGER SIZE. PROVIDE SHUT OFF VALVE AT CONNECTION LOCATION.
- EXISTING DRINKING FOUNTAINS TO REMAIN. CONFORM FUTURE OPERATIONAL AND INSPECT SANITARY PIPING FOR BLOCKAGE.
- CONNECT NEW 1/2" HW PIPE TO EXISTING TO SERVE NEW BREAK ROOM MINK. PROVIDE MANUFACTURER'S WRITTEN RECOMMENDATIONS WITH CHECK VALVE AND AIRGATE VALVE INSTALLED SHOWN. PROVIDE MANUFACTURER'S WRITTEN RECOMMENDATIONS FOR CONNECTION TO COLD WATER SUPPLY LINE. OVERFLOW AND CAP THE ON NUMBER.
- CONNECT NEW 1/2" CW PIPE TO EXISTING TO SERVE NEW BREAK ROOM SINK. FIELD VERIFY FINAL CONNECTION LOCATION AND PIPE ROUTING TO MINIMIZE CLASHES WITH EXISTING.
- CONNECT NEW 2" SANITARY PIPE TO EXISTING TO SERVE NEW BREAK ROOM SINK. FIELD VERIFY FINAL CONNECTION LOCATION AND PIPE ROUTING TO MINIMIZE CLASHES WITH EXISTING.
- CONNECT NEW 1-1/2" VENT PIPE TO EXISTING TO SERVE NEW BREAK ROOM SINK. FIELD VERIFY FINAL CONNECTION LOCATION AND PIPE ROUTING TO MINIMIZE CLASHES WITH EXISTING.
- EXISTING WATER HEATER ASSOCIATED TO THE SERVICE OF THIS 140°F POINT OF USE MIXING VALVE TO BE INSTALLED ON THE HW SUPPLY TO FAUCET TO REDUCE FAUCET DISCHARGE WATER TEMPERATURE TO A MAXIMUM OF 110°F PER ASSE 1010.

PLUMBING GENERAL NOTES

- REFER TO "MECHANICAL" SECTIONS A, SERIES "GENERAL CONDITIONS"/"SUMMARY OF WORK" SECTIONS AND ELSEWHERE IN DRAWINGS FOR FURTHER INFORMATION AND REQUIREMENTS FOR PLUMBING AS APPROVED AND AMENDED BY THE GOVERNING CITY, INCLUDING APPLICABLE SECTIONS OF MPCA, OMA, ALL ILLINOIS BUILDING CODES AND THE PROVISIONS, PURCHASE ALL PERMITS ASSOCIATED WITH THE WORK. OBTAIN ALL INSPECTIONS REQUIRED BY CODE.
- CONTRACTORS AND SUBCONTRACTORS SHALL OBTAIN ALL NECESSARY PERMITS AND COORDINATE WORK WITH OTHER TRADES PRIOR TO FLOOR OR FINISH LAYOUT OF FINISH, DIMENSIONED SHOP AND FIELD WORK OF PROJECT WORK. THEY SHALL BE BROUGHT TO THE ATTENTION OF THE CONSTRUCTION MANAGER AT THIS TIME. INFORMATION REGARDING THE COMPLETE DOCUMENT SET, WORK ARE DISSEMINATED, SIGNING THE DRAWINGS FOR LUMBER LAYOUT AND EQUIPMENT REQUIRED. THE DRAWINGS SHALL NOT BE SCALED FOR EXACT MEASUREMENT. REFER TO ARCHITECTURAL DRAWINGS FOR DIMENSIONS. REFER TO CONNECTIONS AND INSTALLATION REQUIREMENTS. PROVIDE PIPE, CONNECTIONS, ACCESSORIES, AND MATERIALS NECESSARY PLUMBING FIXTURES ETC.
- REFER TO ARCHITECTURAL DRAWINGS FOR EXACT LOCATIONS OF PLUMBING FIXTURES ETC.
- SUSPEND ALL HORIZONTAL SERVICE PIPING SHOWN ON THIS PROJECT SUCH AS, BUT NOT LIMITED TO, WATER, CHINA WASTE/VENT SINK, WASTE/WATERS EXTENDED PIPING DOWN IN WALLS, PARTITIONS, CHASIS, ETC., TO SERVE ROOM SINK. FIELD VERIFY FINAL CONNECTION LOCATION AND PIPE ROUTING TO MINIMIZE CLASHES WITH EXISTING.
- CONNECT 1/2" CW TO CLOSIST CW (UP STREAM) OF A PLUMBING FIXTURE AND ROUTE TO THE TP-1 AND THEN ROUTE FROM TP-1 DOWN TO FLOOR REEN DETAILS AND SCHEDULE SHEETS.

THIS DRAWING IS A PART OF AN INTEGRATED SET OF CONSTRUCTION DOCUMENTS. IT IS TO BE READ AND UNDERSTOOD IN CONJUNCTION WITH ALL OTHER DRAWINGS AND SPECIFICATIONS. THE CONTRACTOR SHALL BE RESPONSIBLE FOR OBTAINING ALL NECESSARY PERMITS AND INSPECTIONS. THE CONTRACTOR SHALL BE RESPONSIBLE FOR OBTAINING ALL NECESSARY PERMITS AND INSPECTIONS. THE CONTRACTOR SHALL BE RESPONSIBLE FOR OBTAINING ALL NECESSARY PERMITS AND INSPECTIONS. THE CONTRACTOR SHALL BE RESPONSIBLE FOR OBTAINING ALL NECESSARY PERMITS AND INSPECTIONS.

31 30 29 28 27 26 25 24 23 22 21 20 19 18 17 16 15 14 13 12 11 10 9 8 7 6 5 4 3 2 1

DATE: _____

CONSULTANTS:
GIBBENS BIRKBECK SCOTT INC.
6901 E. 69th Street, Suite 100
Raytown, Missouri 64133
(816) 338-1700

ARCHITECT:
Bell / Knott
CORPORATE ARCHITECTS, P.C.
12730 State Line Road Suite 100
Leawood, KS 66209
Voice: 913.378.1600
Fax: 913.378.1601
www.bellknott.com

PROJECT:
U.S. CENSUS BUREAU
7700 W 119TH STREET
OVERLAND PARK, KANSAS 66213

ISSUE DATE: _____
REASON FOR ISSUE: _____
PROJECT NUMBER: _____
SHEET TITLE: Plumbing Schedules & Floor Plan
SHEET NUMBER: P1.0

SEAL:
PROFESSIONAL ENGINEER
KANSAS
1994-1
10/17/10