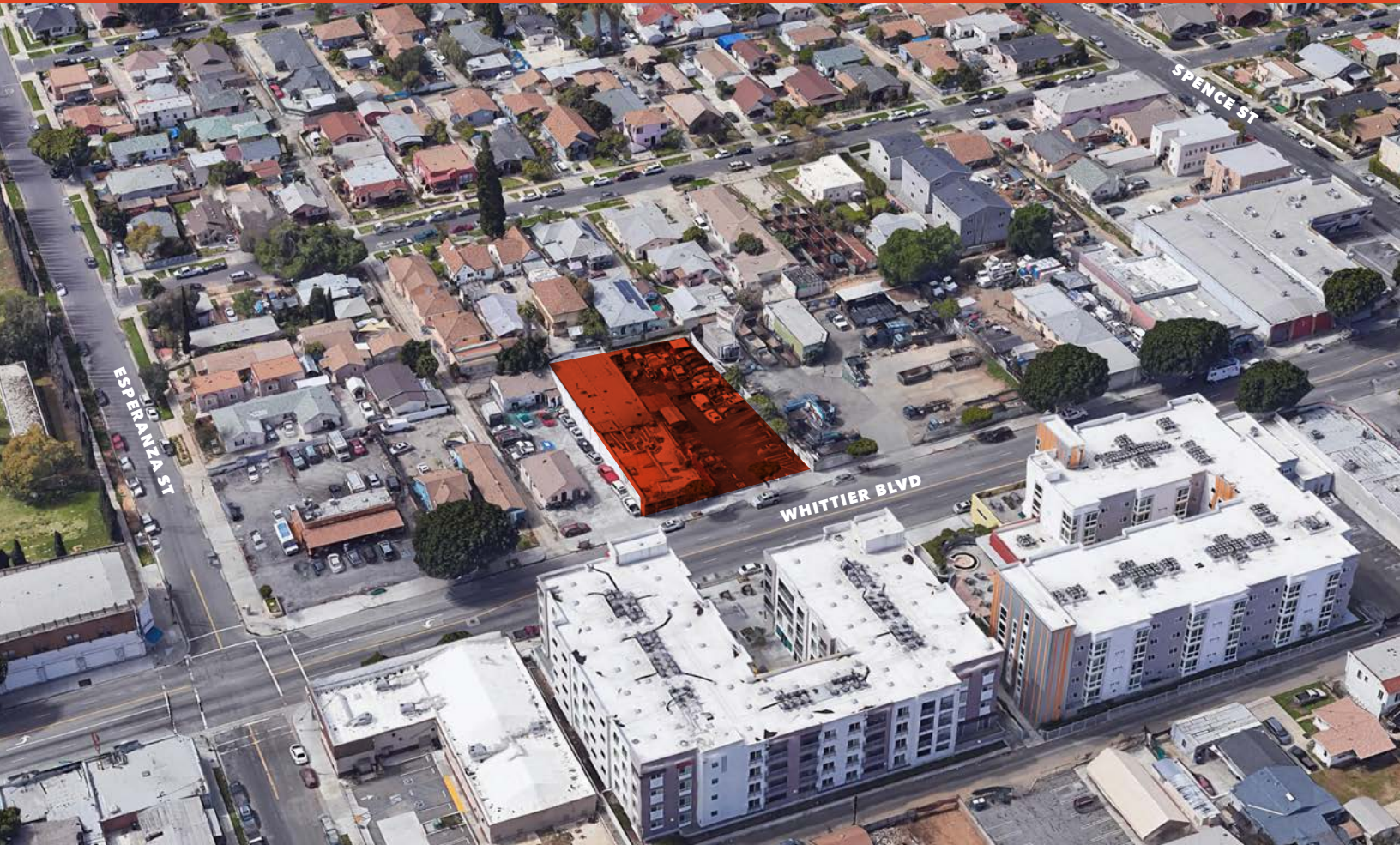




3554 Whittier Blvd

LOS ANGELES, CA 90023

DEVELOPMENT SITE



Approximately 18,000 SF of C2 Zoned Land

JOHN ANTHONY, SIOR

213.225.7218

john.anthony@kidder.com

LIC N° 01226464

CHRISTOPHER STECK

213.225.7231

christopher.steck@kidder.com

LIC N° 01841338

CHRISTOPHER GIORDANO

213.225.7219

christopher.giordano@kidder.com

LIC N° 01928706

**Kidder
Mathews**

This information supplied herein is from sources we deem reliable. It is provided without any representation, warranty, or guarantee, expressed or implied as to its accuracy. Prospective Buyer or Tenant should conduct an independent investigation and verification of all matters deemed to be material, including, but not limited to, statements of income and expenses. Consult your attorney, accountant, or other professional advisor.

KIDDER.COM

DEVELOPMENT SITE

3554 Whittier Blvd

LOS ANGELES, CA 90023

Features

FIRST TIME ON MARKET in over 60 years

17,945 SF lot area

C2 zoning

\$1,950,000 sale price

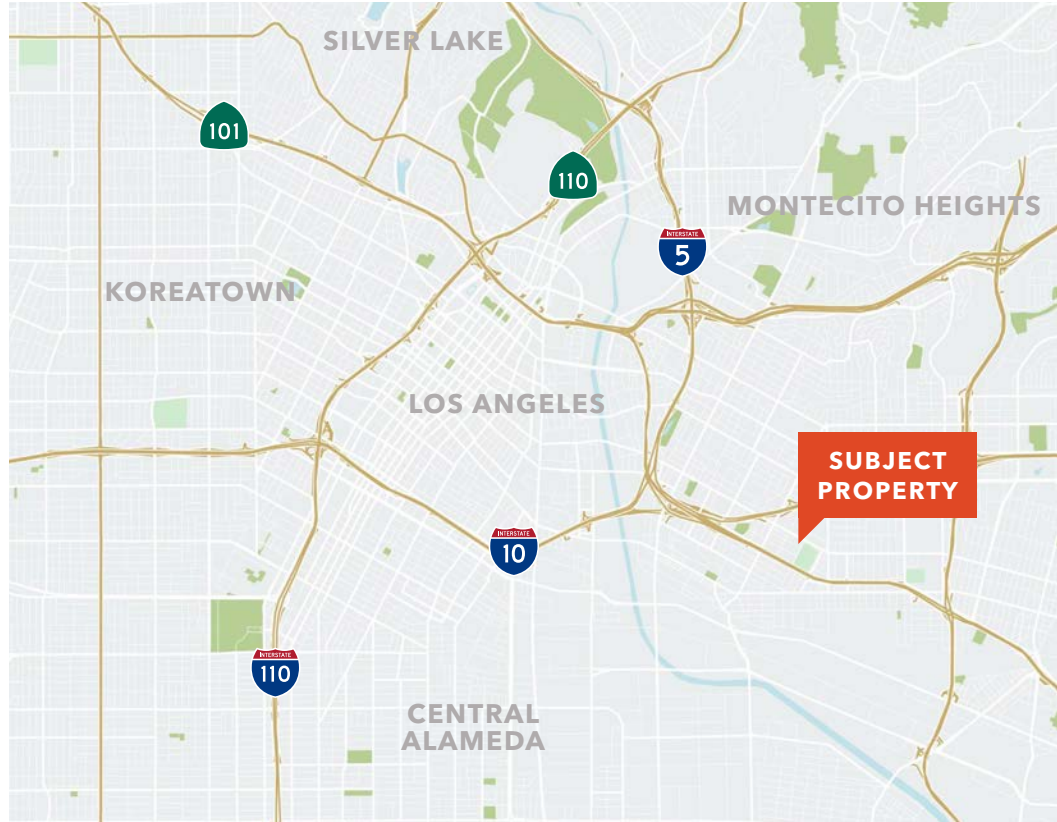
45 buildable units by right

CENTRALLY LOCATED to Boyle Heights and DTLA

EASY ACCESS to 5, 60 & 10 freeways

DEVELOPMENT incentives may apply

TWO NEWER developments of 60 units and 76 units across Whittier Blvd from subject site



JOHN ANTHONY, SIOR

213.225.7218

john.anthony@kidder.com

LIC N° 01226464

CHRISTOPHER STECK

213.225.7231

christopher.steck@kidder.com

LIC N° 01841338

CHRISTOPHER GIORDANO

213.225.7219

christopher.giordano@kidder.com

LIC N° 01928706

KIDDER.COM

This information supplied herein is from sources we deem reliable. It is provided without any representation, warranty, or guarantee, expressed or implied as to its accuracy. Prospective Buyer or Tenant should conduct an independent investigation and verification of all matters deemed to be material, including, but not limited to, statements of income and expenses. Consult your attorney, accountant, or other professional advisor.

km Kidder Mathews

DEVELOPMENT SITE

3554 Whittier Blvd

LOS ANGELES, CA 90023

Parcel Map



JOHN ANTHONY, SIOR

213.225.7218

john.anthony@kidder.com

LIC N° 01226464

CHRISTOPHER STECK

213.225.7231

christopher.steck@kidder.com

LIC N° 01841338

CHRISTOPHER GIORDANO

213.225.7219

christopher.giordano@kidder.com

LIC N° 01928706

KIDDER.COM

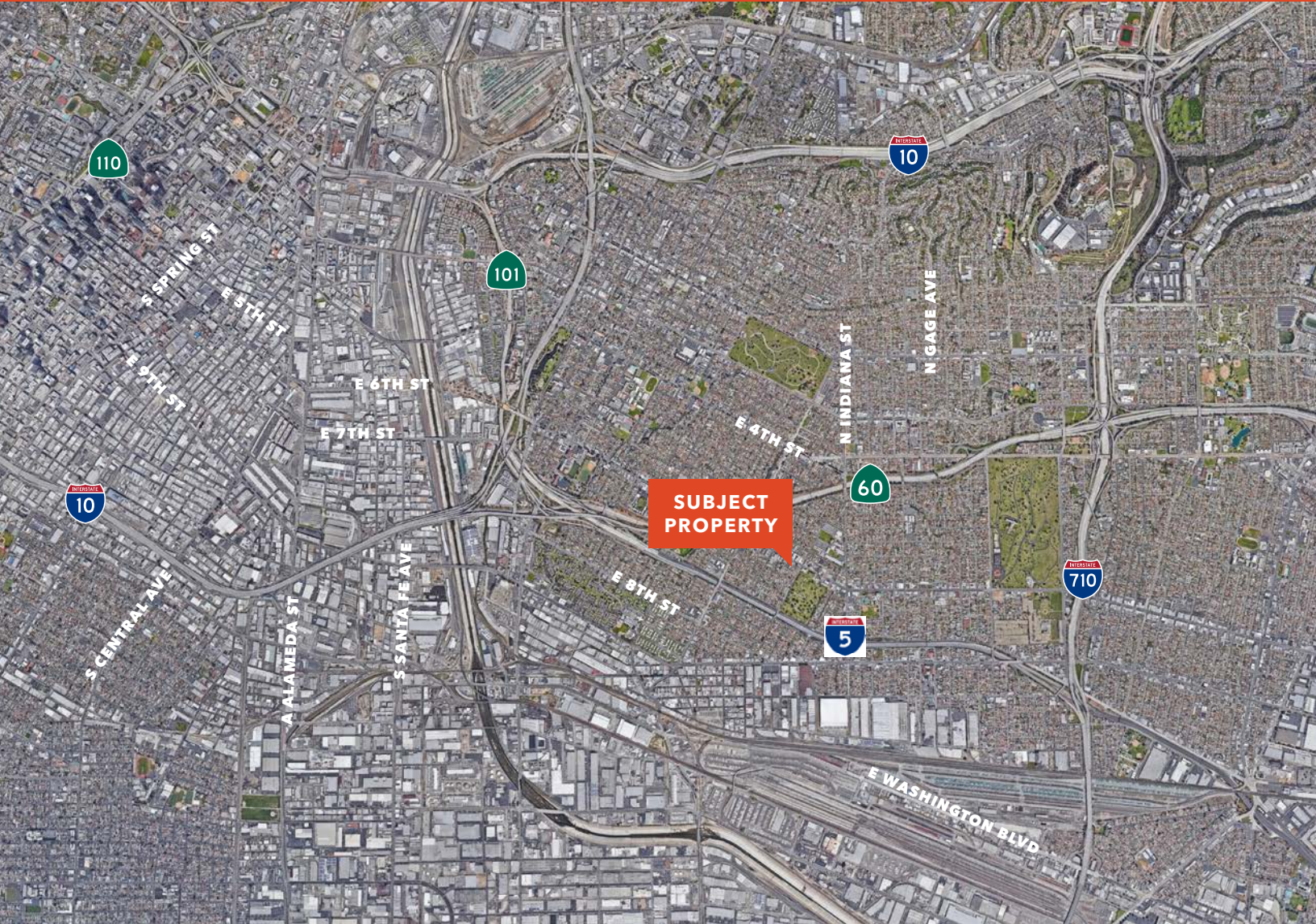
This information supplied herein is from sources we deem reliable. It is provided without any representation, warranty, or guarantee, expressed or implied as to its accuracy. Prospective Buyer or Tenant should conduct an independent investigation and verification of all matters deemed to be material, including, but not limited to, statements of income and expenses. Consult your attorney, accountant, or other professional advisor.



DEVELOPMENT SITE

3554 Whittier Blvd

LOS ANGELES, CA 90023



89
WALK SCORE



64
TRANSIT SCORE

JOHN ANTHONY, SIOR

213.225.7218

john.anthony@kidder.com

LIC N° 01226464

CHRISTOPHER STECK

213.225.7231

christopher.steck@kidder.com

LIC N° 01841338

CHRISTOPHER GIORDANO

213.225.7219

christopher.giordano@kidder.com

LIC N° 01928706

KIDDER.COM

This information supplied herein is from sources we deem reliable. It is provided without any representation, warranty, or guarantee, expressed or implied as to its accuracy. Prospective Buyer or Tenant should conduct an independent investigation and verification of all matters deemed to be material, including, but not limited to, statements of income and expenses. Consult your attorney, accountant, or other professional advisor.

km Kidder
Mathews