

# FOR SALE

## PARK CENTER ONE: BEACHWOOD SUBURBAN OFFICE BUILDING

23215 COMMERCE PARK RD  
Beachwood, OH 44122

### FEATURES

- Investment and Owner / User Opportunity
- Renovated Exterior
- ADA - Compliant
- 35,500 SF Office Building for Sale
- Developed and Managed by Seller since 1971
- Portfolio Opportunity: Neighboring Office Building of Approximately 38,000 SF Available for Sale



EMMCOREALTYGROUP.COM

### OFFICE

Jeffrey Soclof, CCIM  
O: 216 292 3700 | C: 216 857 2075  
jeffrey@emmcorealtygroup.com

Sherrie Mendenhall  
O: 216 292 3700 x17 | C: 216 224 9650  
sherrie@emmcorealtygroup.com



# PARK CENTER I

23215 COMMERCE PARK RD, Beachwood, OH 44122

Building Name	Park Center I
Price	\$3,800,000.00
Price PSF	\$107.00
Property Type	Office
Property Subtype	Office Building
APN	742-22-019
Building Size	35,518 SF
Lot Size	1.743 Acres
Building Class	B
Occupancy	65%
Year Built	1971
Capital Rehab	Completed 2018
HVAC	Magic-Pak Heating & Cooling Units
Parking Spaces	156 Spaces
Zoning	U - 8: Mixed Use (Office-Industrial)



Well-maintained office building with leasing opportunity to add value for sale in ideal Beachwood location. Excellent owner/user or investment opportunity!

- Park Center I is prominently located in a major business district with direct access to amenities.
- Situated on Commerce Park Rd., off of S. Green Rd., between Harvard Rd. and Chagrin Blvd. in Beachwood, OH.
- Terrific Beachwood Location
- Distance to I-271 at Harvard interchange: 1.9 miles; I-271 at Chagrin: 1.6 miles; I-480 at Miles: 3.3 miles
- Close proximity to Eaton Corp, Ahuja Medical Center, and Lifestyle dining & shopping
- Opportunity to add value by leasing over 12,700 SF
- Over 70% of available office space is in move-in condition or only requires paint and carpet.

- HVAC System: Magic-Pak heating and cooling units throughout the building provide tenant controlled environments with consistency from office to office.
- Full floor available for upside leasing or Owner/ User.
- Public Wifi
- Approximately 2,500 businesses in Beachwood
- Average household incomes just over \$142,400 within 1 mile.
- Approximately 25,000 employees work in Beachwood

EMMCOREALTYGROUP.COM

---

Jeffrey Soclof, CCIM  
 O: 216 292 3700 | C: 216 857 2075  
 jeffrey@emmcorealtygroup.com

---

Sherrie Mendenhall  
 O: 216 292 3700 x17 | C: 216 224 9650  
 sherrie@emmcorealtygroup.com



EMMCO REALTY GROUP



# CORPORATE MAP

23215 COMMERCE PARK RD, Beachwood, OH 44122



EMMCOREALTYGROUP.COM

Jeffrey Soclof, CCIM  
 O: 216 292 3700 | C: 216 857 2075  
 jeffrey@emmcorealtygroup.com

Sherrie Mendenhall  
 O: 216 292 3700 x17 | C: 216 224 9650  
 sherrie@emmcorealtygroup.com



EMMCOREALTY GROUP





# PARK CENTER I

23215 COMMERCE PARK RD, Beachwood, OH 44122



University Hospitals: Ahuja Medical Center



Eaton Corporation: Operational Headquarters

## BEACHWOOD, OH

Located in Cuyahoga County, a suburb to the southeast of Cleveland, Beachwood is an affluent suburb with excellent city services, and a well-regarded school system. The area boasts metropolitan-caliber amenities and an economy that is both thriving and diverse.

Beachwood is home to many notable corporate headquarters such as Eaton Corporation, a diversified industrial manufacturer with annual sales of more than \$11 billion. Beachwood is also nationally recognized in the medical research and healthcare fields with the Cleveland Clinic and University Hospital both having branches. Beachwood provides residents and employees an array of recreation opportunities, attractive shopping destinations, and dining options both within city limits and the immediate surrounding neighborhoods.

Beachwood is a gateway community with immediate access to Interstate 480 and Interstate 271, and easily accessible to Interstate 90 and Interstate 77. Downtown Cleveland is a quick 10 miles away and Cleveland Hopkins International Airport is 22 miles (a 23 minute drive) as well as many rural and other urban destinations.

EMMCOREALTYGROUP.COM

Jeffrey Soclof, CCIM  
O: 216 292 3700 | C: 216 857 2075  
jeffrey@emmcogroup.com

Sherrie Mendenhall  
O: 216 292 3700 x17 | C: 216 224 9650  
sherrie@emmcogroup.com



EMMCO REALTY GROUP



**BENCHMARK DEMOGRAPHICS**

23215 COMMERCE PARK RD, BEACHWOOD, OH 44122

<b>Benchmark Demographics</b>	<b>1 mile</b>	<b>3 miles</b>	<b>5 miles</b>	<b>5 minutes</b>	<b>10 minutes</b>	<b>County</b>	<b>MSA</b>	<b>ST</b>	<b>US</b>
Population	4,413	81,588	251,092	11,928	91,519	1,245,337	3,859,545	11,829,645	333,793,107
Households	1,994	33,681	108,216	5,209	37,831	538,371	1,578,699	4,754,087	126,083,849
Families	1,243	21,266	63,497	3,235	23,391	306,798	991,983	3,015,569	82,747,156
Average Household Size	2.01	2.32	2.26	2.14	2.30	2.26	2.39	2.42	2.58
Owner Occupied Housing Units	919	20,817	62,922	2,805	22,646	306,965	1,043,273	3,106,225	80,135,109
Renter Occupied Housing Units	1,075	12,864	45,294	2,405	15,185	231,407	535,426	1,647,862	45,948,740
Median Age	53.0	43.3	42.4	49.4	43.7	42.0	42.1	40.2	38.5
<b>Trends: 2015 - 2020 Annual Rate</b>									
Population	1.07%	-0.18%	-0.34%	0.33%	-0.19%	-0.26%	0.03%	0.23%	0.72%
Households	0.96%	-0.29%	-0.42%	0.24%	-0.30%	-0.30%	0.05%	0.26%	0.72%
Families	0.98%	-0.38%	-0.53%	0.18%	-0.40%	-0.50%	-0.09%	0.11%	0.64%
Owner HHs	-0.04%	-0.38%	-0.44%	-0.15%	-0.39%	-0.40%	0.06%	0.23%	0.72%
Median Household Income	1.33%	2.16%	1.45%	1.30%	2.13%	1.26%	1.28%	1.30%	1.60%
<b>Households by Income</b>									
<\$15,000	8.80%	11.90%	15.40%	9.70%	12.00%	15.70%	11.80%	11.40%	10.30%
\$15,000 - \$24,999	5.00%	8.70%	10.00%	8.00%	9.00%	10.40%	9.70%	9.50%	8.80%
\$25,000 - \$34,999	5.10%	8.70%	9.70%	5.90%	8.80%	9.80%	9.50%	9.60%	8.70%
\$35,000 - \$49,999	11.10%	11.50%	12.80%	11.00%	11.60%	13.00%	13.30%	13.30%	12.20%
\$50,000 - \$74,999	<b>15.70%</b>	15.00%	15.90%	14.80%	14.80%	16.20%	17.90%	18.20%	17.30%
\$75,000 - \$99,999	16.10%	12.10%	11.10%	13.70%	11.90%	11.50%	13.10%	13.00%	12.60%
\$100,000 - \$149,999	15.90%	12.70%	11.70%	14.30%	12.90%	12.70%	14.30%	14.60%	15.30%
\$150,000 - \$199,999	7.30%	6.40%	4.90%	6.50%	6.20%	4.60%	5.30%	5.30%	6.90%
\$200,000+	14.90%	13.00%	8.40%	16.00%	12.80%	6.10%	5.20%	5.00%	7.90%
Median Household Income	\$80,220	\$63,131	\$52,225	\$75,733	\$62,354	\$51,121	\$56,084	\$56,352	\$62,203
Average Household Income	\$118,611	\$105,929	\$85,734	\$122,033	\$105,007	\$76,752	\$78,212	\$77,918	\$90,054
Per Capita Income	\$49,667	\$43,791	\$37,022	\$52,243	\$43,649	\$33,256	\$32,063	\$31,425	\$34,136
<b>Population by Age</b>									
0 - 4	3.50%	5.20%	5.20%	4.10%	5.10%	5.30%	5.40%	5.70%	6.00%
5 - 9	5.40%	5.80%	5.70%	4.80%	5.60%	5.50%	5.60%	5.90%	6.10%
10 - 14	6.30%	6.30%	6.10%	5.60%	6.10%	5.80%	6.00%	6.10%	6.30%
15 - 19	7.00%	7.40%	6.40%	7.10%	7.30%	5.90%	6.10%	6.30%	6.30%
20 - 24	3.00%	6.10%	6.20%	5.00%	6.10%	6.30%	6.10%	6.60%	6.70%
25 - 34	6.60%	10.50%	12.30%	9.00%	10.80%	13.00%	12.60%	13.00%	14.00%
35 - 44	10.50%	10.50%	11.10%	9.50%	10.30%	11.70%	11.60%	12.00%	12.60%
45 - 54	15.90%	11.70%	12.10%	12.30%	11.60%	12.60%	12.80%	12.60%	12.40%
55 - 64	14.60%	13.80%	13.00%	15.60%	13.60%	14.40%	14.50%	13.90%	13.00%
65 - 74	10.10%	12.20%	11.50%	13.60%	12.00%	10.90%	11.10%	10.50%	9.80%
75 - 84	10.60%	6.90%	6.30%	8.40%	7.10%	5.70%	5.60%	5.20%	4.80%
85+	6.60%	3.60%	3.40%	5.00%	4.40%	3.00%	2.60%	2.30%	2.00%
<b>Race and Ethnicity</b>									
White Alone	37.60%	40.30%	39.60%	39.90%	41.30%	60.80%	78.50%	80.00%	69.40%
Black Alone	40.30%	53.20%	53.70%	51.80%	51.80%	30.20%	14.70%	12.90%	13.00%
American Indian Alone	0.10%	3.30%	0.10%	0.10%	0.10%	0.20%	0.20%	0.20%	1.00%
Asian Alone	5.50%	0.00%	3.30%	5.00%	3.70%	3.50%	2.40%	2.60%	5.90%
Pacific Islander Alone	0.00%	0.60%	0.00%	0.00%	0.00%	0.00%	0.00%	0.00%	0.20%
Some Other Race Alone	0.30%	2.50%	0.70%	0.50%	0.70%	2.50%	1.60%	1.50%	7.10%
Two or More Races	1.90%	2.50%	2.50%	2.70%	2.40%	2.80%	2.60%	2.70%	3.60%
Hispanic Origin (Any Race)	1.60%	2.60%	2.40%	2.30%	2.70%	6.60%	4.70%	4.20%	18.80%

EMMCOREALTYGROUP.COM

Jeffrey Soclof, CCIM

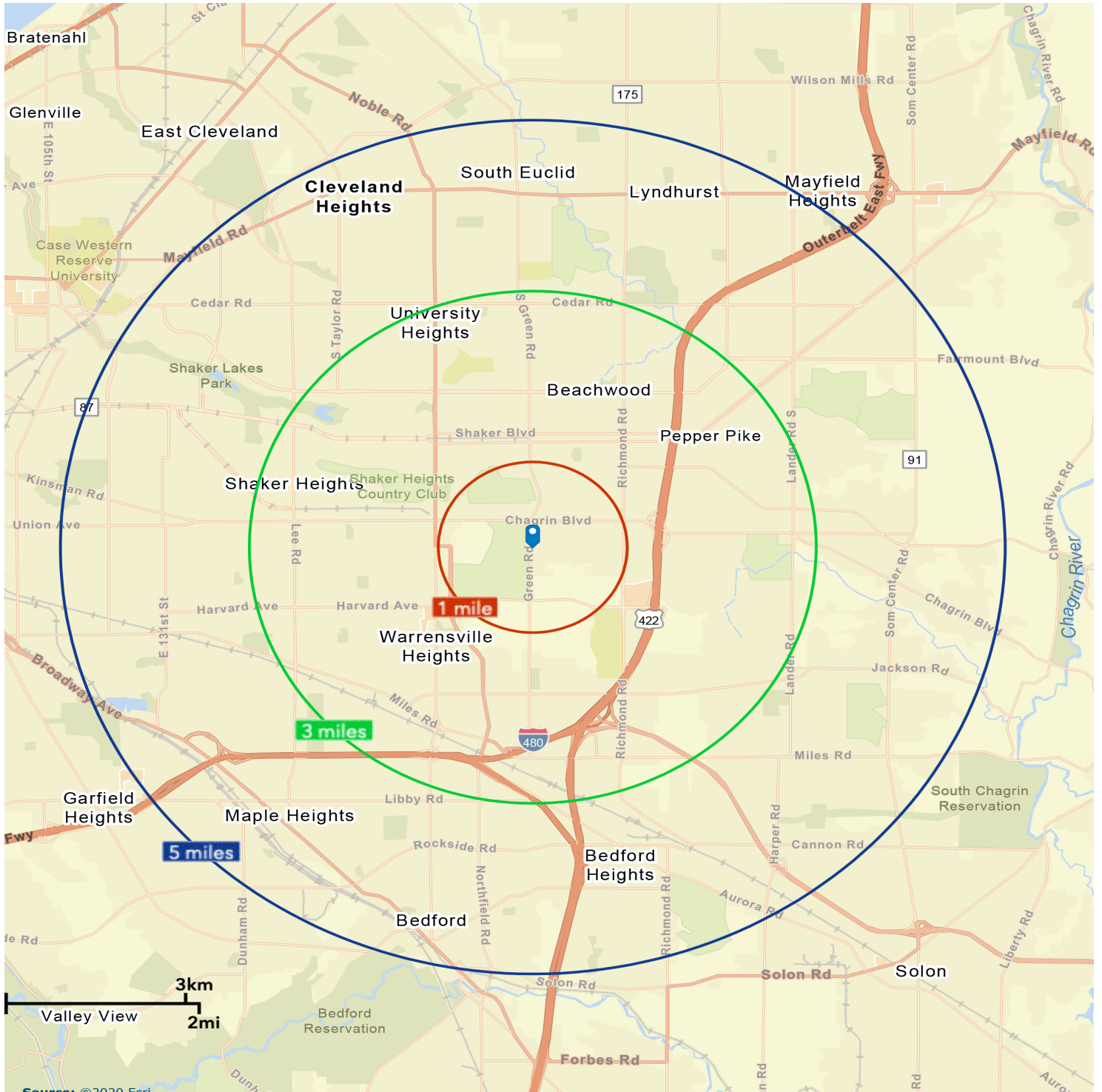
O: 216 292 3700 | C: 216 857 2075

jeffrey@emmc Realtygroup.com



# RADIUS MAP: 1, 3, 5 MILES

23215 COMMERCE PARK RD, BEACHWOOD, OH 44122



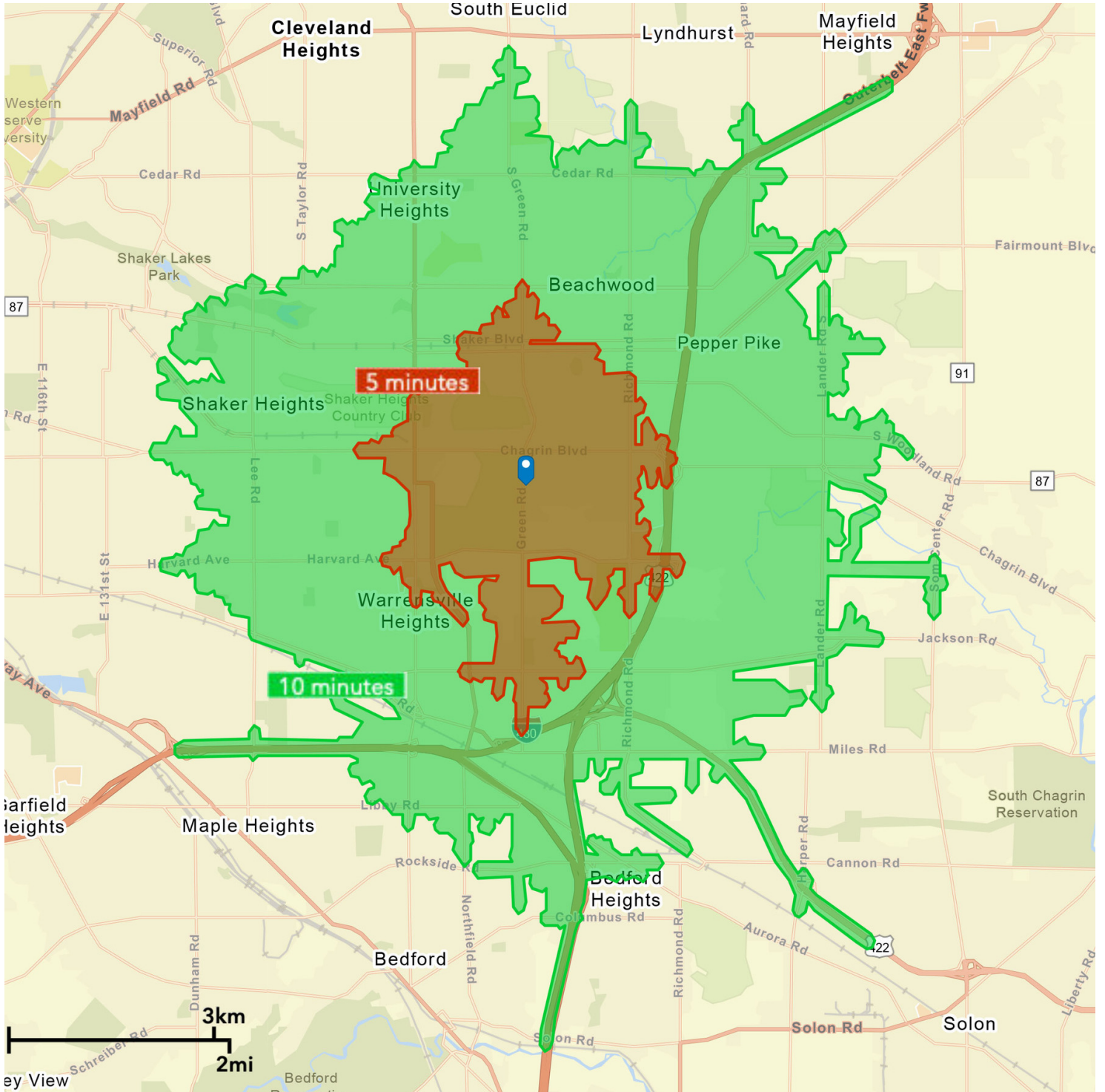
EMMCOREALTYGROUP.COM

Jeffrey Soclof, CCIM  
 O: 216 292 3700 | C: 216 857 2075  
 jeffrey@emmc Realtygroup.com



# DRIVE TIMES: 5 AND 10 MINUTES

23215 COMMERCE PARK RD, BEACHWOOD, OH 44122



EMMCOREALTYGROUP.COM

Jeffrey Soclof, CCIM  
 O: 216 292 3700 | C: 216 857 2075  
 jeffrey@emmc Realtygroup.com