

FOR LEASE

Modern Office Space in Mission District

1939 Market Street, Suite 110, San Francisco, CA



CONTACT

Mark Melbye
650.769.3512 | mmelbye@kiddermathews.com
LIC #01006214



FOR LEASE

1939 Market Street, Suite 110

FEATURES

1,506 SF office on first floor

Spacious and open concept layout

Floor to ceiling windows provide an abundance of natural light

Modern glass conference room

Soundproof ceiling tiles

Centrally located in the Mission District

Conveniently located close to public transportation

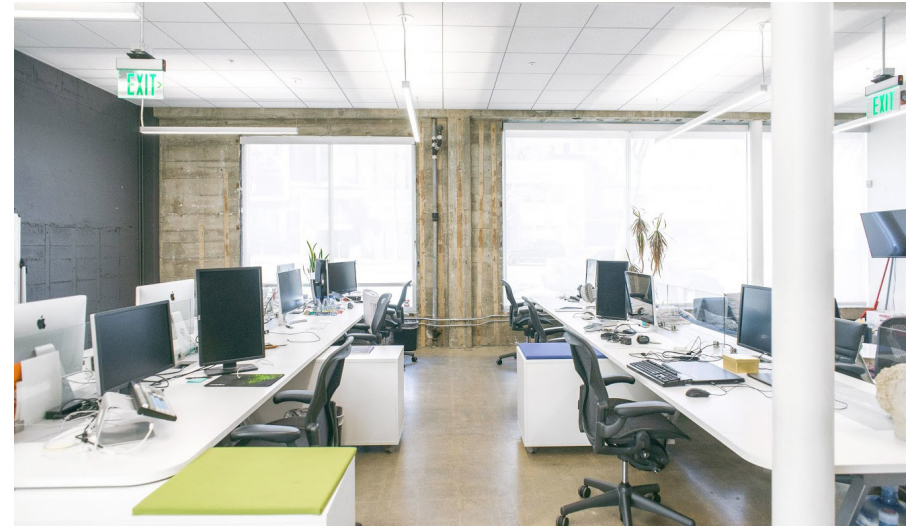
Easily accessible from Highways 80, 101 and 280

Near several great restaurants on Valencia Street

2 parking spaces included

Shared restrooms and common kitchen with other suites in building

Rent: \$6,500 FS per month



CONTACT

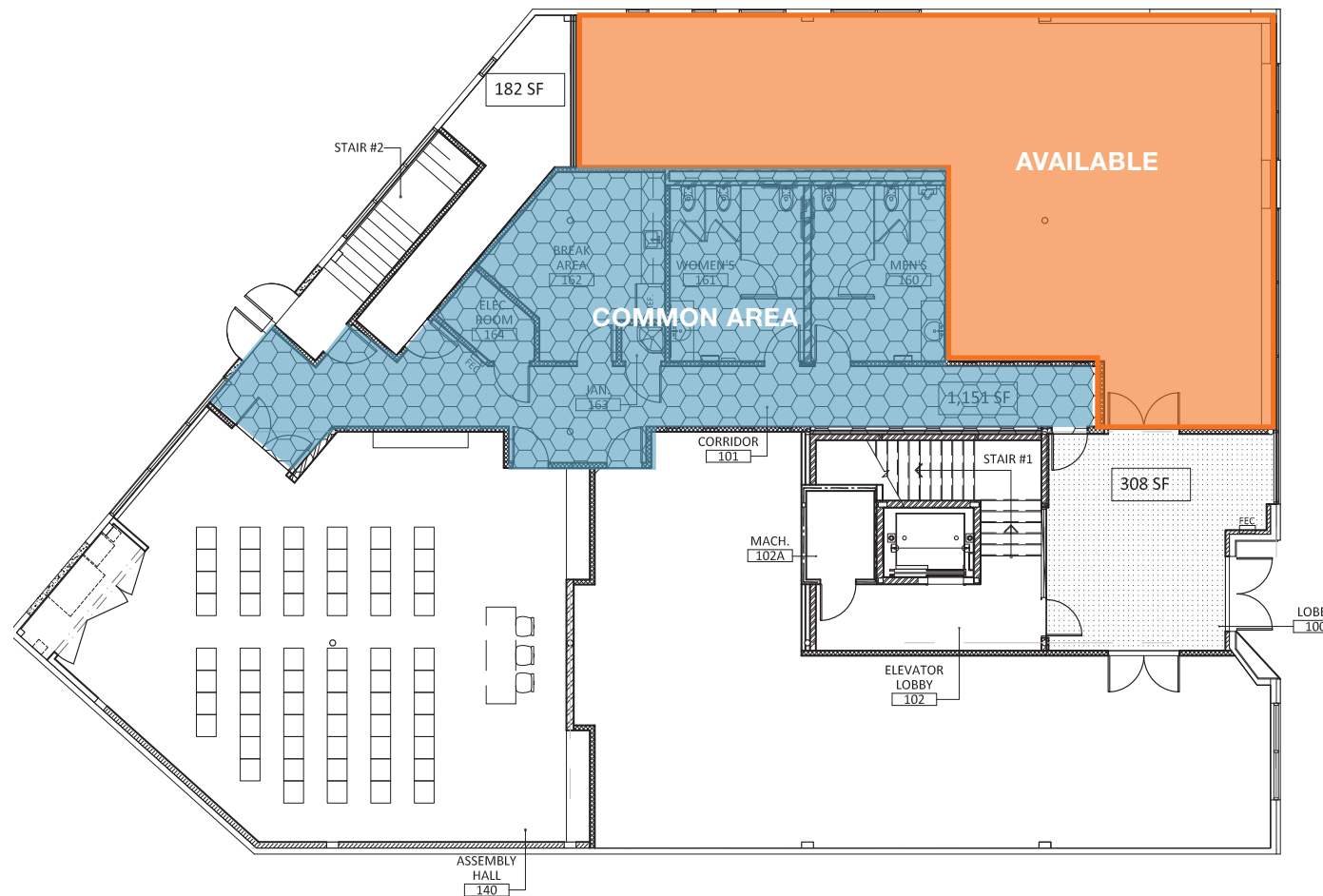
Mark Melbye
650.769.3512 | mmelbye@kiddermathews.com
LIC #01006214



FOR LEASE

1939 Market Street, Suite 110

FLOOR PLAN



CONTACT

Mark Melbye
650.769.3512
mmelbye@kiddermathews.com
LIC #01006214



FOR LEASE

1939 Market Street, Suite 110

LOCATION



CONTACT

Mark Melbye
650.769.3512
mmelbye@kiddermathews.com
LIC #01006214

