

For Sale

Medical Office in New River

\$315,000



Medical Office For Sale in 300 New River

300 New River Parkway, Bldg 6 Ste 12
Hardeeville, South Carolina 29927

Property Highlights

- Rare medical office for sale in the 300 New River complex
- In very close proximity to Sun City, the USCB campus, the Auto Mall, and the Publix/Super-Wal Mart development
- Easy access to I-95 via Exit 8, Bluffton, Hilton Head, Savannah, and Beaufort
- Layout consists of reception, check in/check out, admin area, 3 exam rooms, open work area, doctor's office, break room, storage area, and two restrooms

Property Description

Currently operated as an prosthetics facility, this property could suit many medical professions. Very functional layout in the front with open area in the rear that could be retro-fitted to include additional exam rooms or work area. Call David Bachelder, Jr. for additional information or to arrange a showing.

OFFERING SUMMARY

Sale Price	\$315,000
Building Size	2,004 SF
Property Type	Office / Medical
Taxes (2018)	\$5,892.72
Regime Fee (2019)	\$891.93 / Month

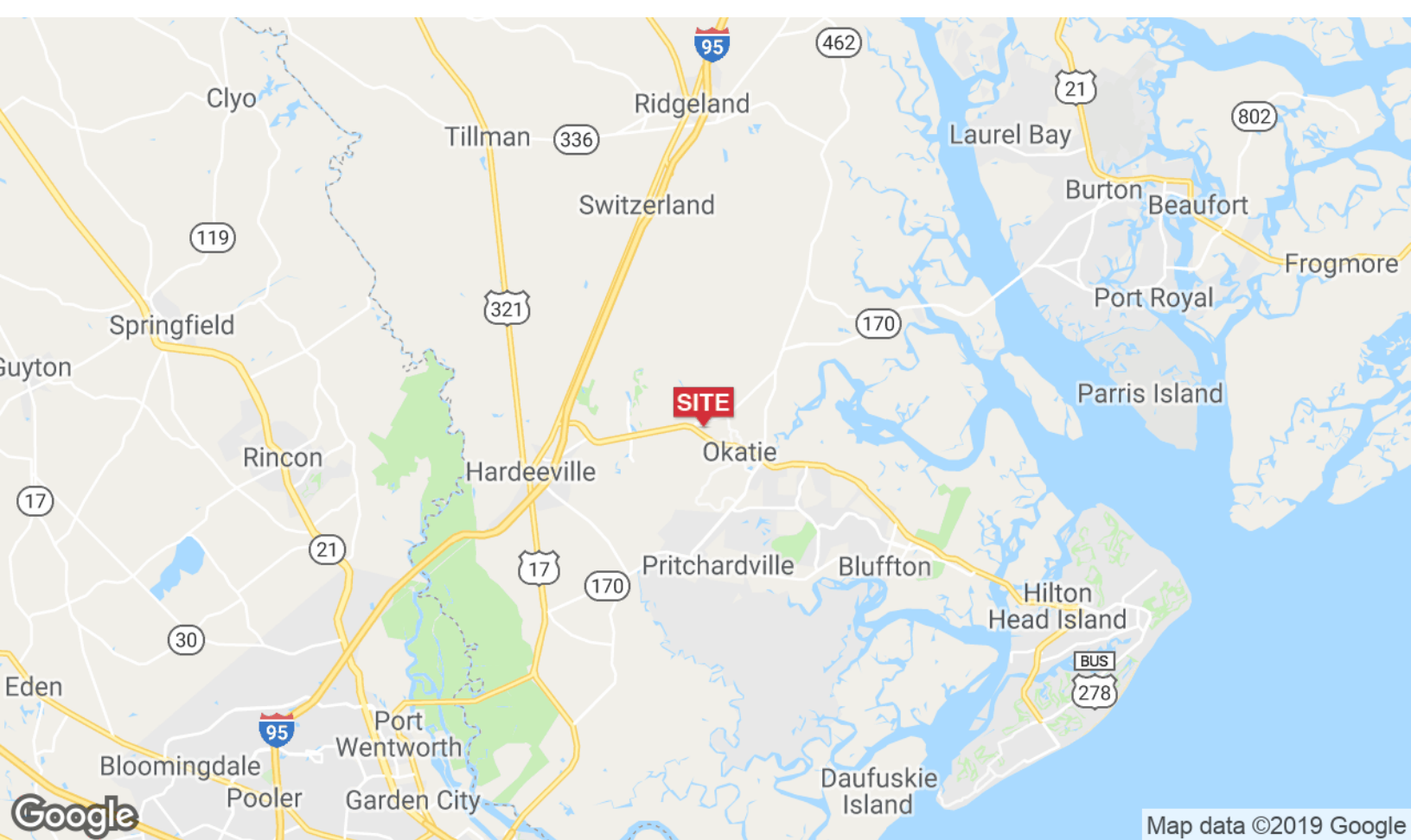
DEMOGRAPHICS

Stats	Population	Avg. HH Income
5 Miles	19,473	\$75,129
10 Miles	48,532	\$74,216
25 Miles	440,969	\$66,746

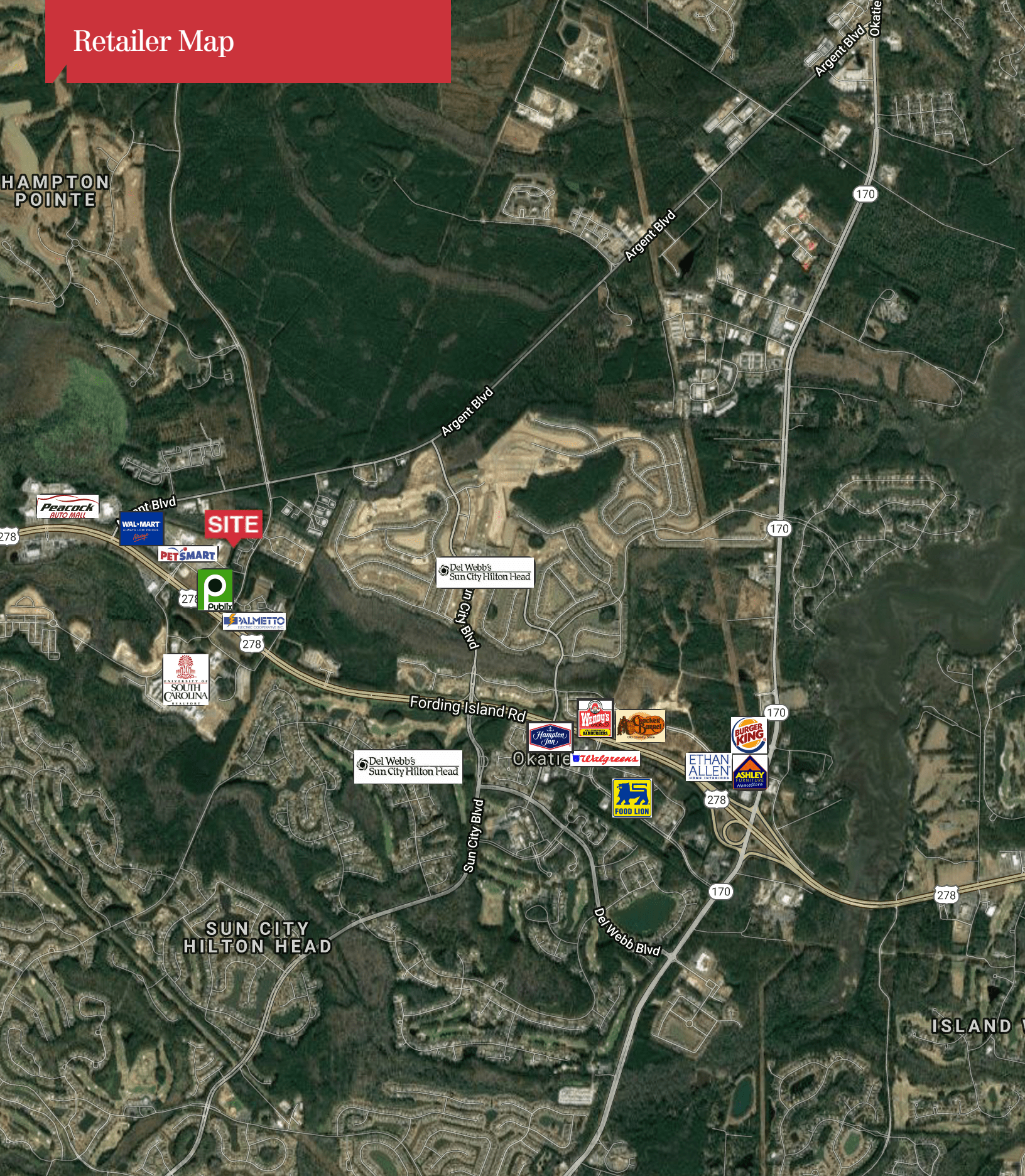
For more information

1227 May River Road, Suite 100
Bluffton, SC 29910
843 837 4460 tel
naicarolinacharter.com

Location Maps

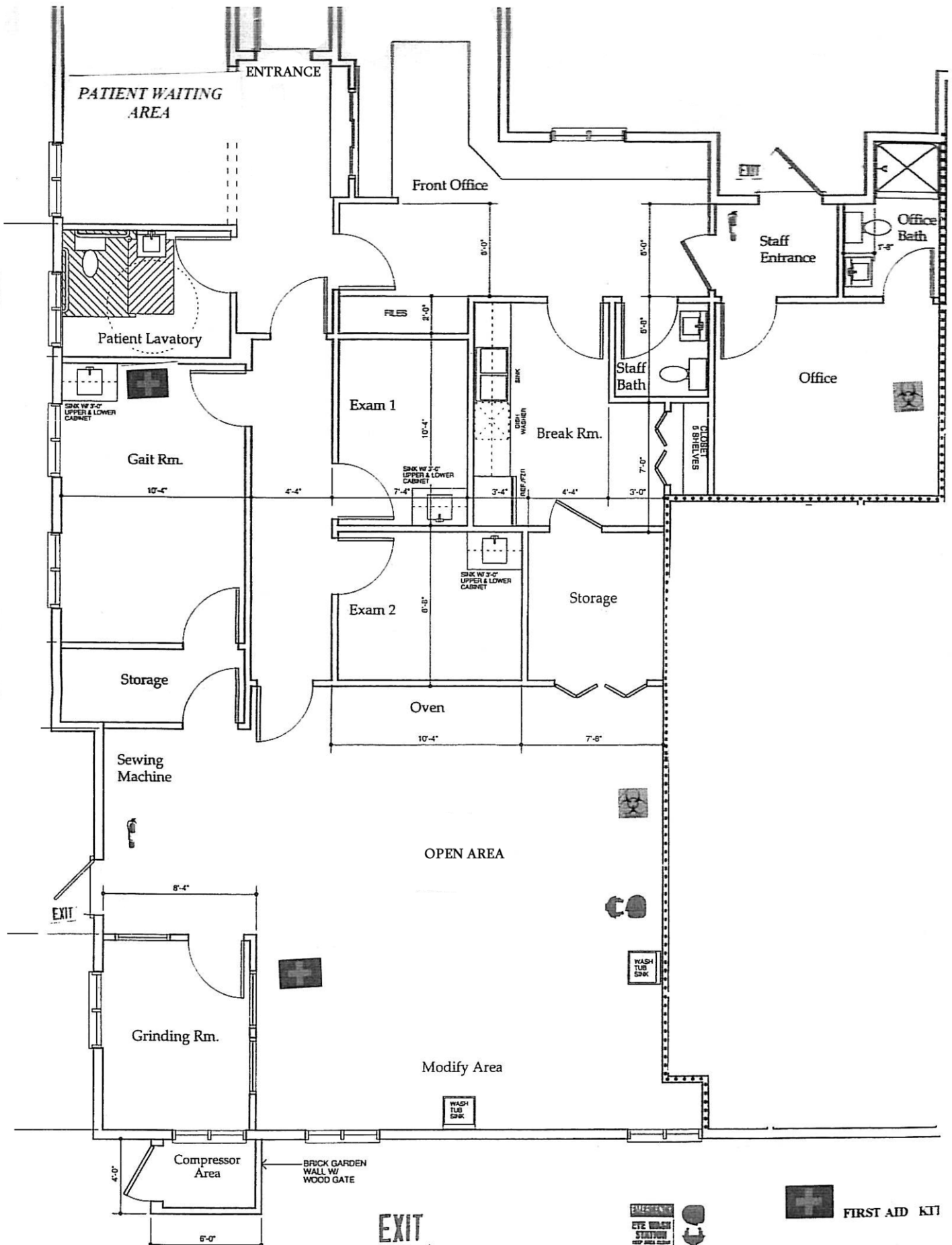


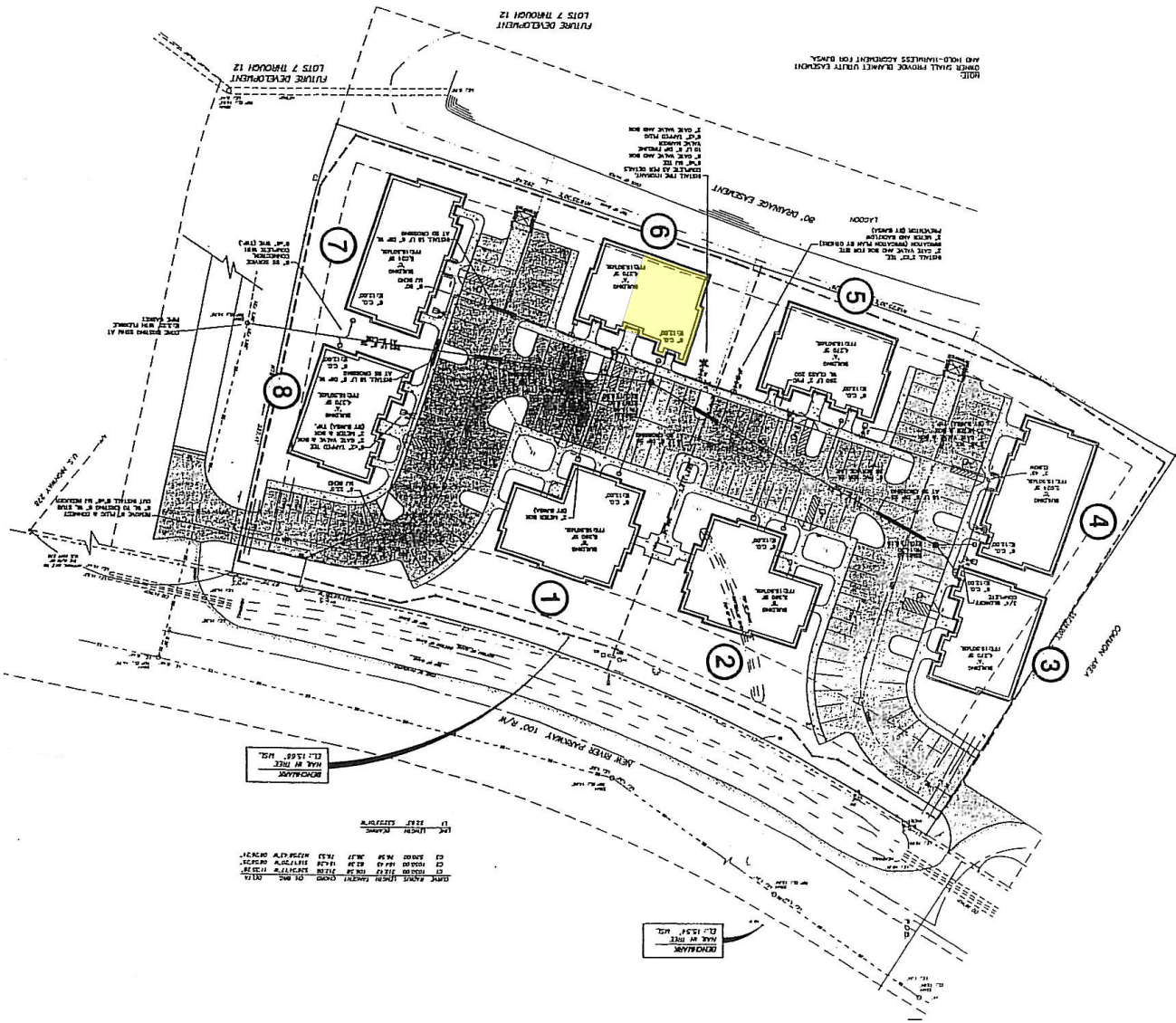
Retailer Map



Google

Map data ©2019 Google Imagery ©2019 , DigitalGlobe, Landsat / Copernicus, U.S. Geological Survey, USDA Farm Service Agency



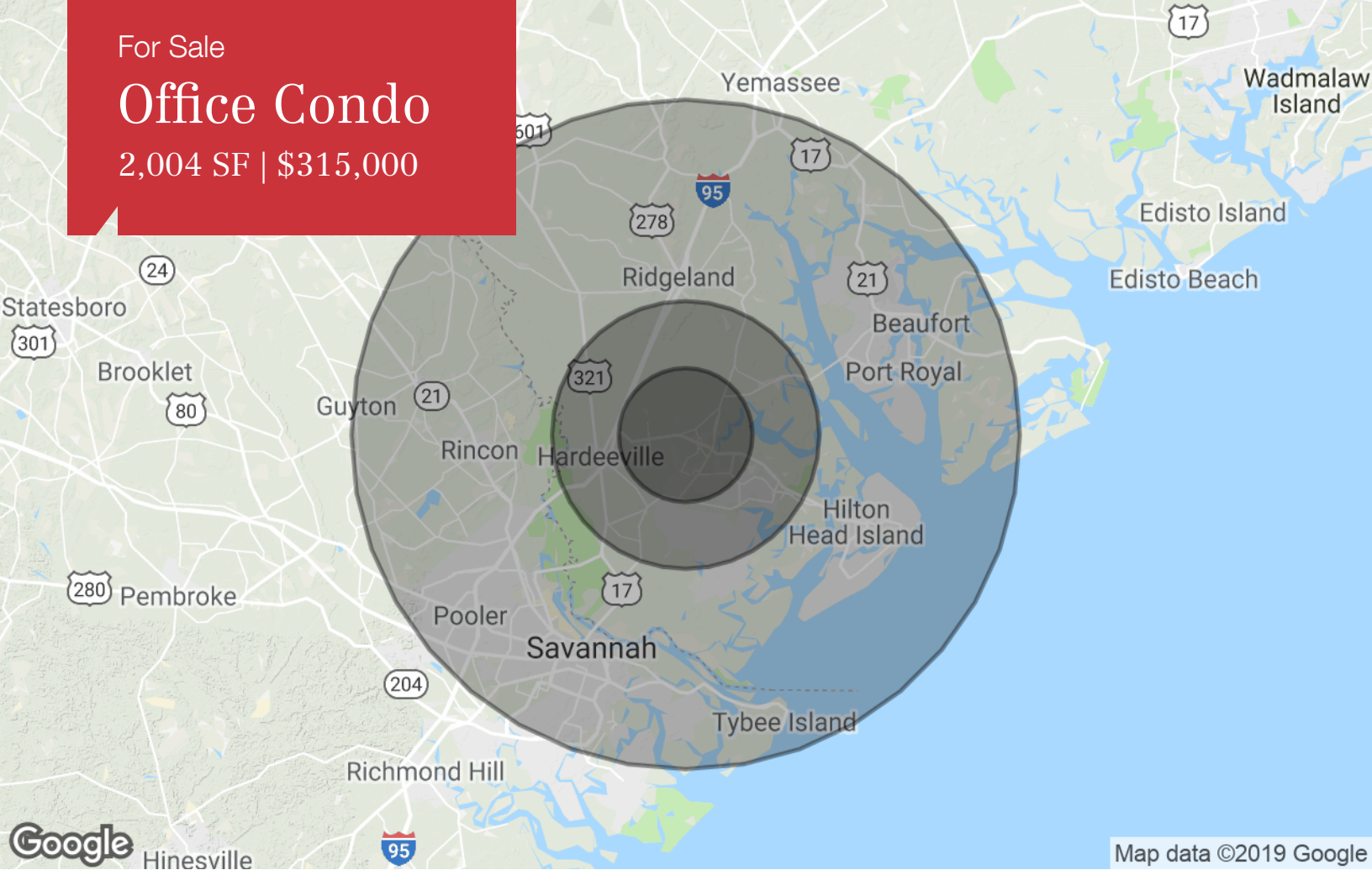


David Bachelder Jr.
O: 843 837 4460 x4
C: 843 422 6543
davidjr@naicarolinacharter.com

For Sale

Office Condo

2,004 SF | \$315,000



Map data ©2019 Google

	5 Miles	10 Miles	25 Miles
Population			
TOTAL POPULATION	19,473	48,532	440,969
MEDIAN AGE	54.8	42.8	37.2
MEDIAN AGE (MALE)	54.5	42.6	36.1
MEDIAN AGE (FEMALE)	54.9	42.7	38.2
Households & Income			
TOTAL HOUSEHOLDS	9,273	20,100	170,031
# OF PERSONS PER HH	2.1	2.4	2.6
AVERAGE HH INCOME	\$75,129	\$74,216	\$66,746
AVERAGE HOUSE VALUE	\$276,320	\$295,444	\$292,839

* Demographic data derived from 2010 US Census