



Land For Sale: +/- 11.5 Acres Exit 100, I-95

Maryland Rt 272 & I-95, North East, MD 21901

Property Features

- NEW PRICE! Sale price reduced - \$780,000
- Subdivision Available!
- Public water and sewer available
- Next door to Best Western Hotel
- Across from Bay View Elementary School, adjacent to Cecil College
- Zoned BG (Business General)

For more information:

Jon Hickey

302 322 9500 • C: 302 438 0767 • jonhickey@emoryhill.com

For Sale Land



Property Summary

Sale Price: \$780,000

Lot Size: 11.5 Acres

APN #:

Zoning: BG, Business General

Property Overview

Public water and sewer available; next door to Best Western Hotel across from Bay View Elementary School, adjacent to Cecil College; Zoned BG (Business General)

Location Overview

Exit 100 on Interstate 95, Maryland Rt 272

- Next door to Best Western Hotel
- Across from Bay View Elementary School, adjacent to Cecil College

North East Maryland is Centrally located along the Northeast Corridor

28 Miles to Wilmington

59 Miles to Philadelphia

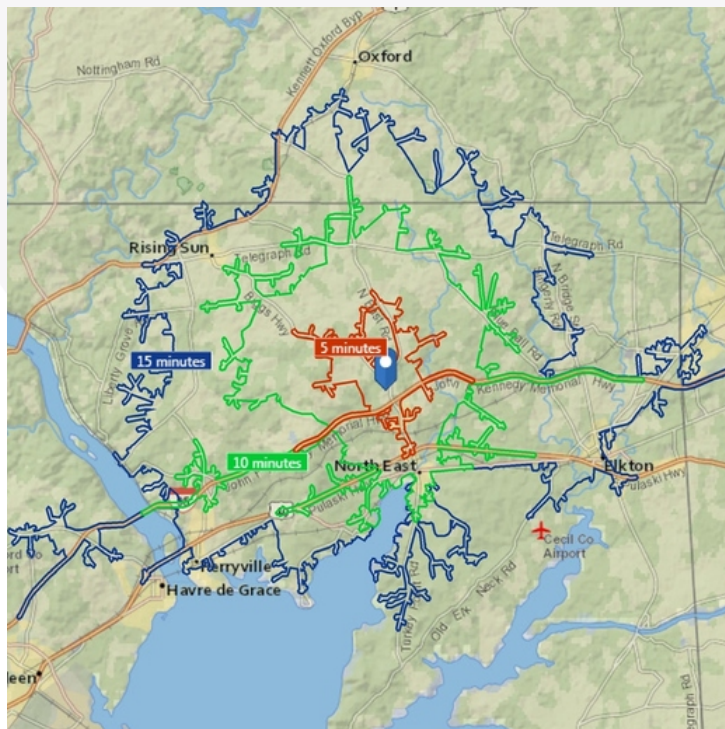
47 Miles to Baltimore

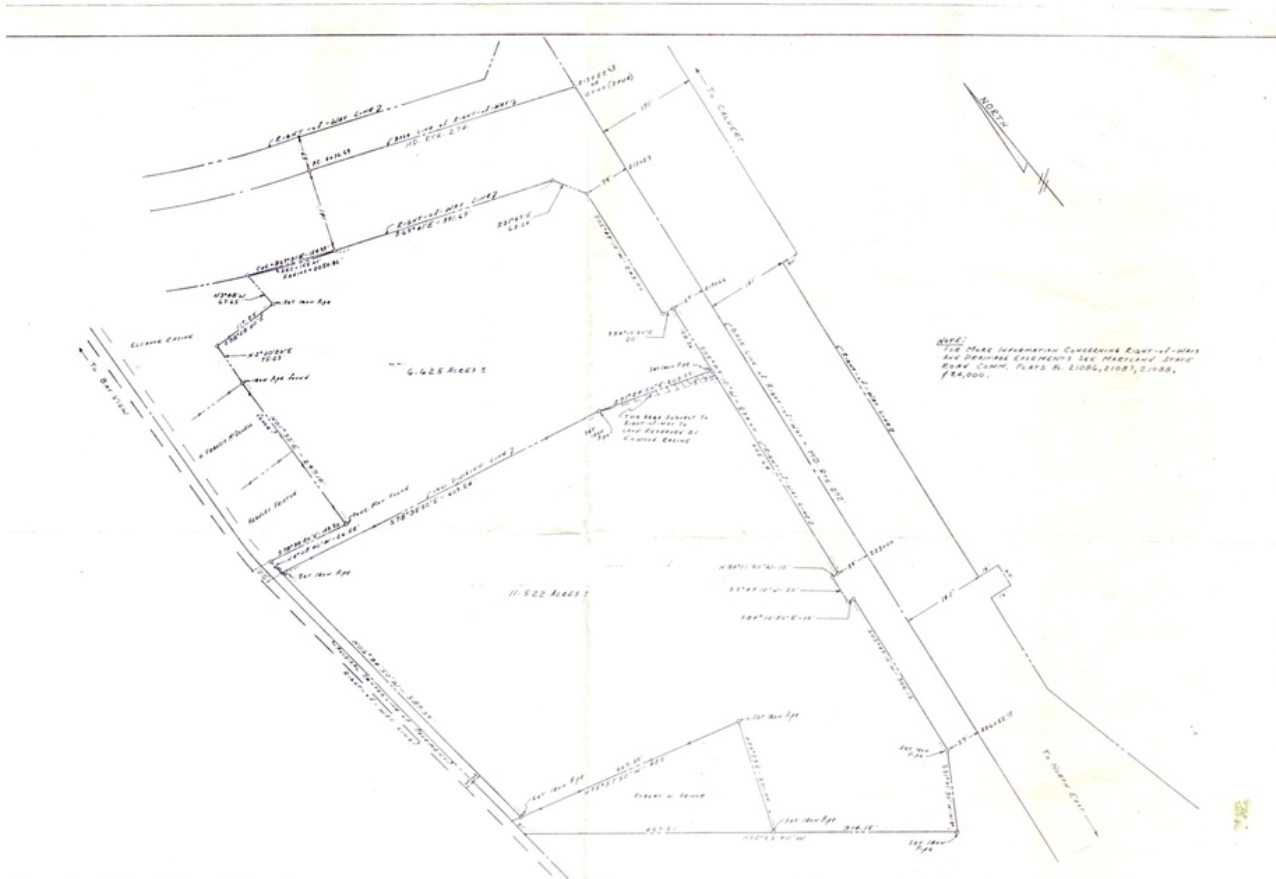
86 Miles to Washington DC 145 Miles to New York City

For Sale Land



For Sale Land

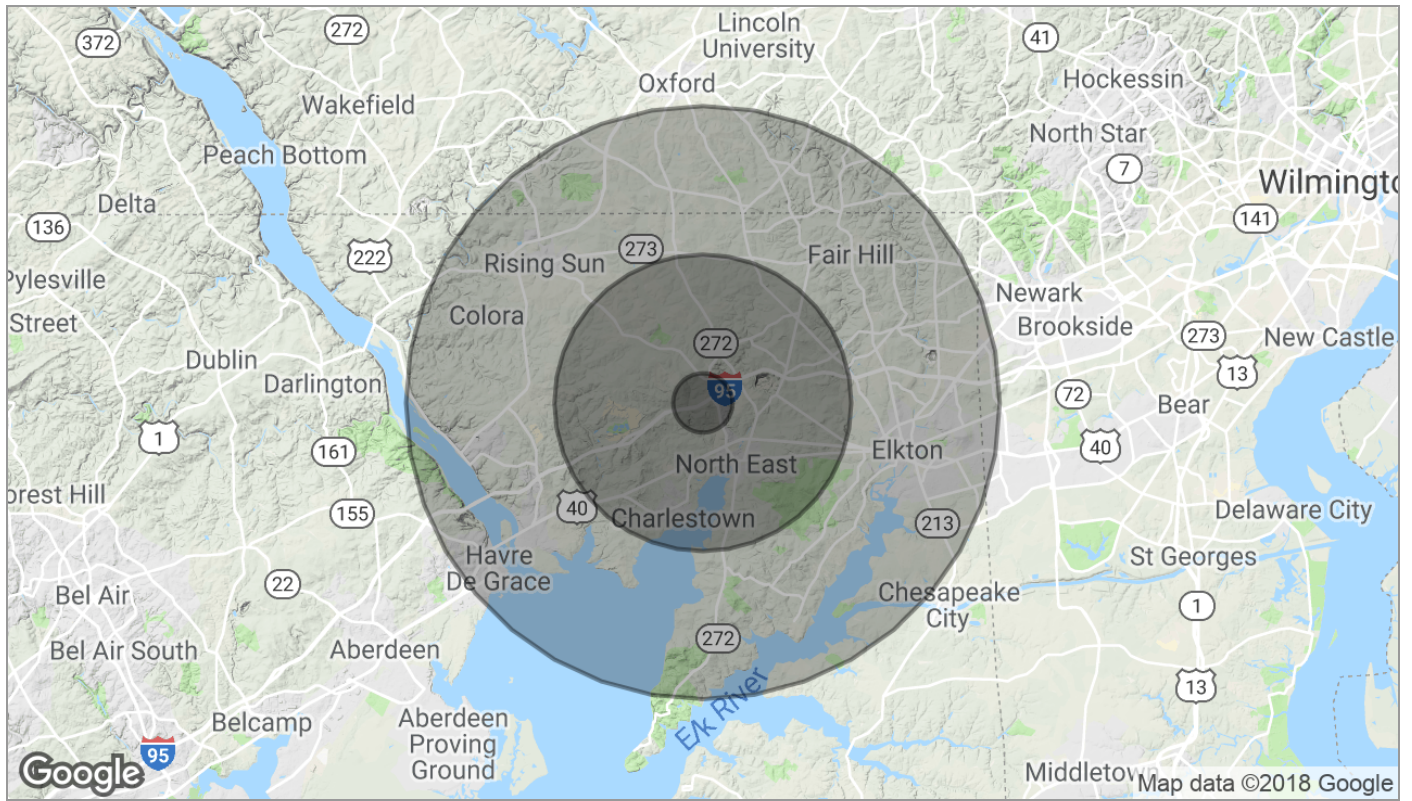




NOTE:
FOR MORE INFORMATION CONCERNING RIGHT-OF-WAY
AND DRAINAGE EASEMENTS SEE MARYLAND STATE
ROAD COMM. PLATS N. 21006, 21081, 21088,
2142000.

CHANGES REVISIONS	NO.		J. R. McCrone, Jr., Inc. REGISTERED PROFESSIONAL ENGINEERS AND SURVEYORS	OFFICES AT ANNAPOLIS CENTREVILLE PRINCE FREDERICK TRAPPE LEONARDTOWN ELKTON	IN CHARGE: JRM CHECKED BY: JRM DRAWN BY: JRM TRACED BY: JRM	SHEET NUMBER 1
					DATE: 6/14/63 SCALE: 1" = 100' JOB NUMBER: E-2193	A PLAT OF A SURVEY OF THE ELWOOD RACINE LAND NEAR BAY VIEW. 5TH ELECTORAL DISTRICT, CELL COUNTY, M.D.

For Sale Land



	1 Mile	5 Miles	10 Miles
Population			
TOTAL POPULATION	753	20,059	85,355
MEDIAN AGE	38.6	37.8	37.6
MEDIAN AGE (MALE)	38.1	36.6	36.6
MEDIAN AGE (FEMALE)	39.0	38.7	38.6
Households & Income			
TOTAL HOUSEHOLDS	279	7,241	30,546
# OF PERSONS PER HH	2.7	2.8	2.8
AVERAGE HH INCOME	\$70,708	\$73,852	\$76,172
AVERAGE HOUSE VALUE	\$220,766	\$286,242	\$309,624
Race			
% WHITE	93.9%	93.5%	91.7%
% BLACK	5.2%	4.0%	5.1%
% ASIAN	0.0%	0.3%	0.6%
% HAWAIIAN	0.0%	0.1%	0.0%
% INDIAN	0.0%	0.3%	0.3%
% OTHER	0.0%	0.0%	0.2%
Ethnicity			
% HISPANIC	3.3%	2.2%	3.6%

* Demographic data derived from 2010 US Census