

For Lease  
**Historic Office Building  
in Lower Downtown**



# 1525 Market Street | Suite 100A

Denver, Colorado 80202

## Property Overview

- Newly renovated historic Lower Downtown office building
- Lower level space includes private entry, open office area, 5 offices, kitchen, and private restrooms
- Available building signage provides excellent street-level exposure in high-traffic area
- Abundant parking is available in the area including garages and surface lots
- Premier location surrounded by fine dining, upscale hotels, shopping, entertainment venues, and more
- Coors Field, Pepsi Center, several major attractions, museums, and parks within short walking distance

**Lease Rate: \$18.00/SF Full Service**

## Property Facts

Available SF:	3,000 SF
Building SF:	9,000 SF
Year Built:	1864
Zoning:	D-LD

For more information:

**Ana Sandomire**

303 565 3029  
asandomire@shamesmakovsky.com

**Kiley Crews**

720 881 7548  
kcrews@shamesmakovsky.com

NO WARRANTY OR REPRESENTATION, EXPRESS OR IMPLIED, IS MADE AS TO THE ACCURACY OF THE INFORMATION CONTAINED HEREIN, AND THE SAME IS SUBMITTED SUBJECT TO ERRORS, OMISSIONS, CHANGE OF PRICE, RENTAL OR OTHER CONDITIONS, PRIOR SALE, LEASE OR FINANCING, OR WITHDRAWAL WITHOUT NOTICE, AND OF ANY SPECIAL LISTING CONDITIONS IMPOSED BY OUR PRINCIPALS NO WARRANTIES OR REPRESENTATIONS ARE MADE AS TO THE CONDITION OF THE PROPERTY OR ANY HAZARDS CONTAINED THEREIN ARE ANY TO BE IMPLIED.

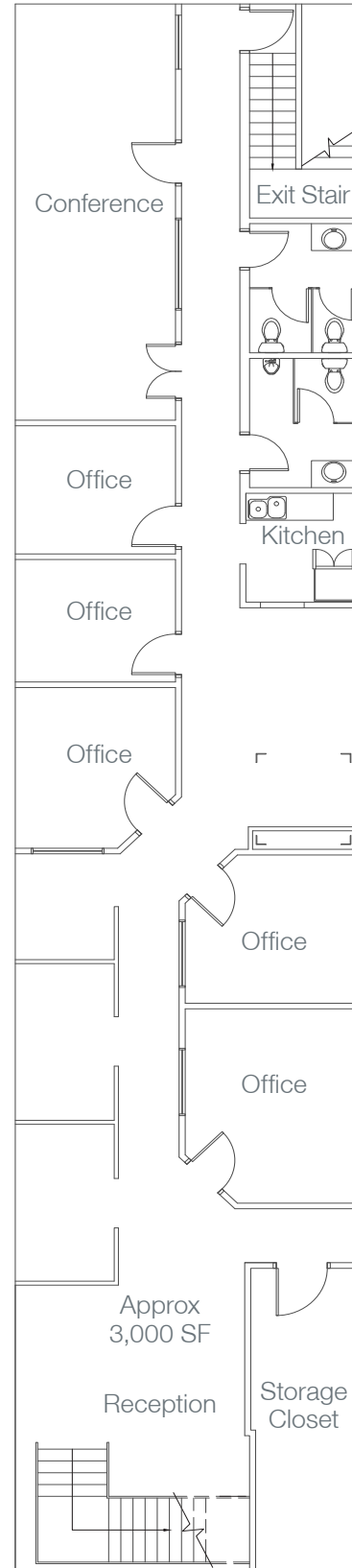
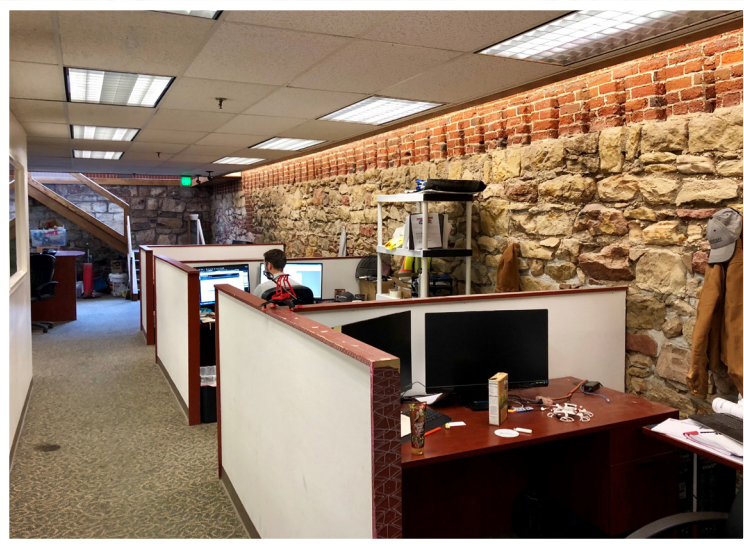
1400 Glenarm Place, Suite 100  
Denver, CO 80202

303 534 5005

**naishamesmakovsky.com**

Office For Lease

1525 Market St. #100A  
Denver, Colorado



Suite 100A Floor Plan

For more information:

**Ana Sandomire**

303 565 3029  
asandomire@shamesmakovsky.com

**Kiley Crews**

720 881 7548  
kcrews@shamesmakovsky.com

**NAI** Shames Makovsky

1400 Glenarm Place, Suite 100  
Denver, CO 80202  
303 534 5005

[naishamesmakovsky.com](http://naishamesmakovsky.com)