



FOR SALE

Property Description

Phenomenal fully functional restaurant space in a prime location in the heart of the much sought after Lincoln Park neighborhood. Across from the former Children's Memorial Hospital The immediate area is undergoing a major redevelopment that will add to it's existing appeal. Call for more details.

Property Details

SALE PRICE: **\$990,000**

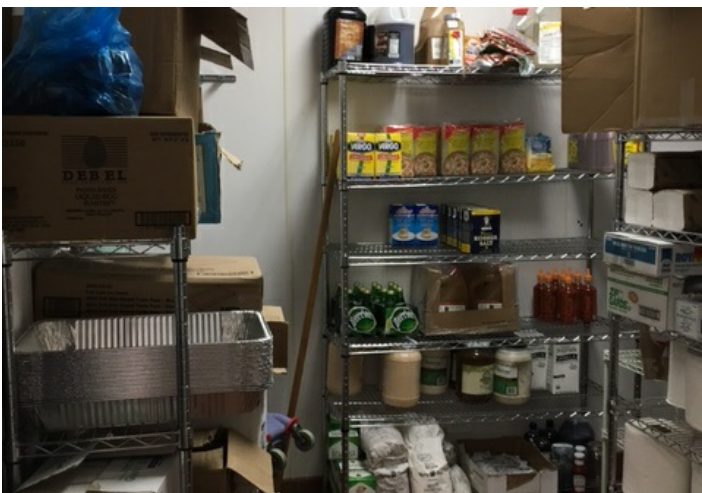
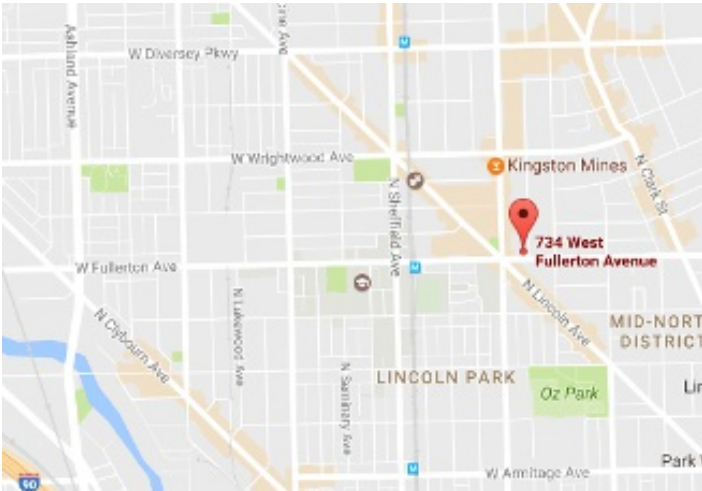
PROPERTY TAX: \$14,227

ZONING: B1-2

BUILDING SQ FT: 2,080

SITE SQUARE FEET: 1,556

SITE DIMENSIONS: 18x86



Dale Strauss 773-736-3600 dale@straussrealty.com



Dale Strauss 773-736-3600 dale@straussrealty.com



Dale Strauss 773-736-3600 dale@straussrealty.com



Dale Strauss 773-736-3600 dale@straussrealty.com



Dale Strauss 773-736-3600 dale@straussrealty.com



Dale Strauss 773-736-3600 dale@straussrealty.com