

JACKSONSHAW

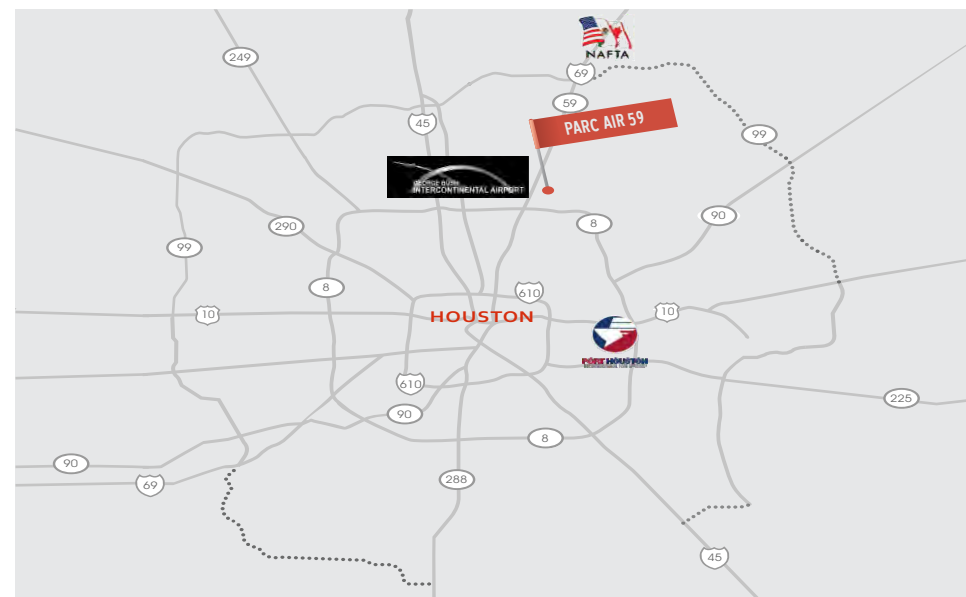


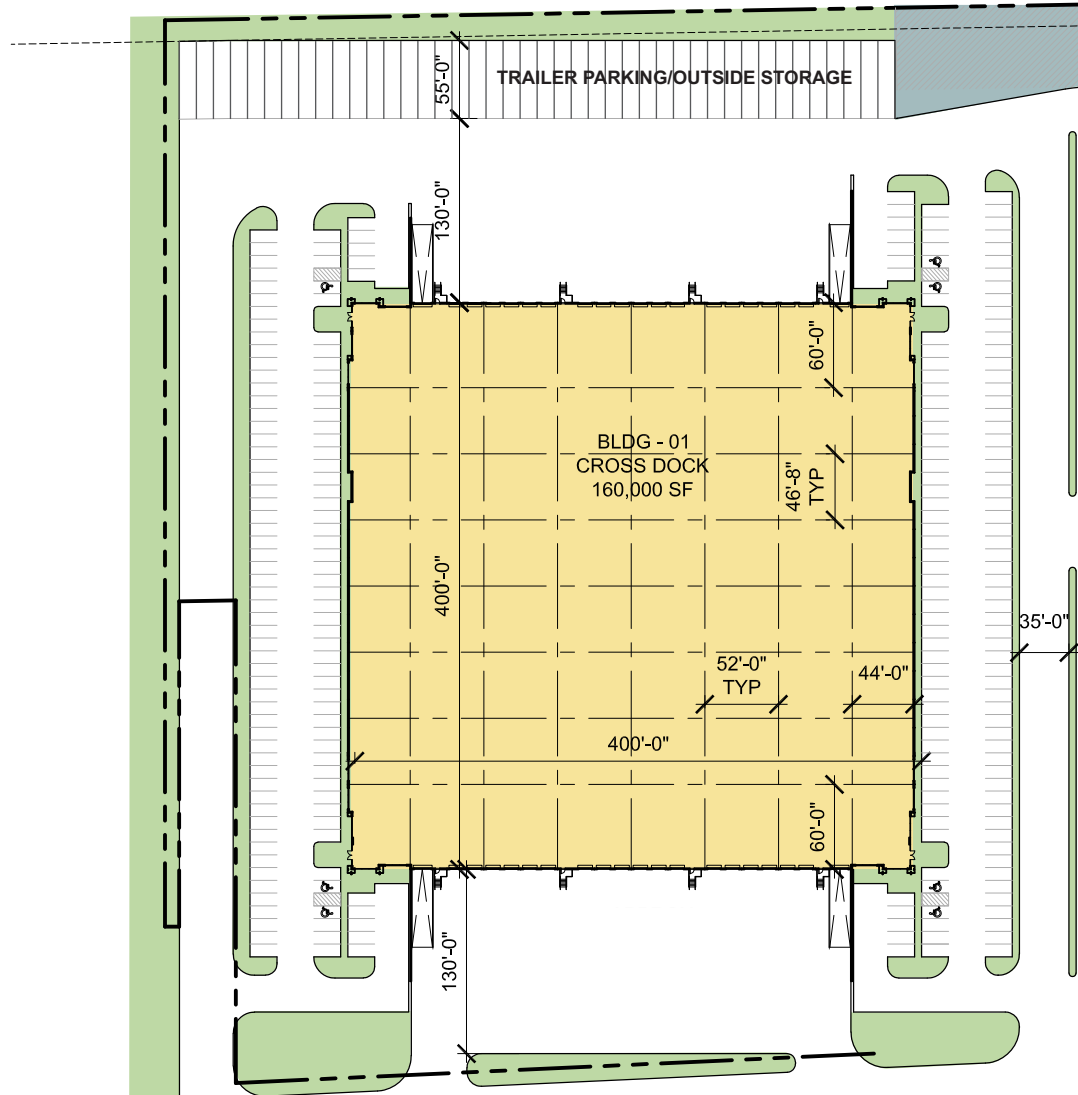
PARC AIR 59

BUILDING 1

18730 Eastex Freeway 59 | Humble, TX

SQUARE FEET:	160,000	PARKING SPACES:	236
MAX CONTIGUOUS:	160,000	TRUCK COURT:	130' / 185'
MINIMUM DIVISIBLE:	40,000	DOCK DOORS:	36
BLDG. DEPTH:	400'	TRAILER PARKING:	42
CLEAR HEIGHT:	32'	SPRINKLER SYSTEM:	ESFR
TYPICAL BAY:	52' x 46' 8"	CONFIGURATION:	Cross Dock
DRIVE-IN DOORS:	4		





FOR LEASING INFORMATION



ALLISON BERGMANN
allison.bergmann@cushwake.com
713 963 2865

NATHAN WYNNE
nathan.wynne@cushwake.com
713 345 1431

BEAU KALEEL
beau.kaleel@cushwake.com
713 963 2844

JASON DILLEE
jason.dillee@cushwake.com
713 345 1432

JACKSONSHAW

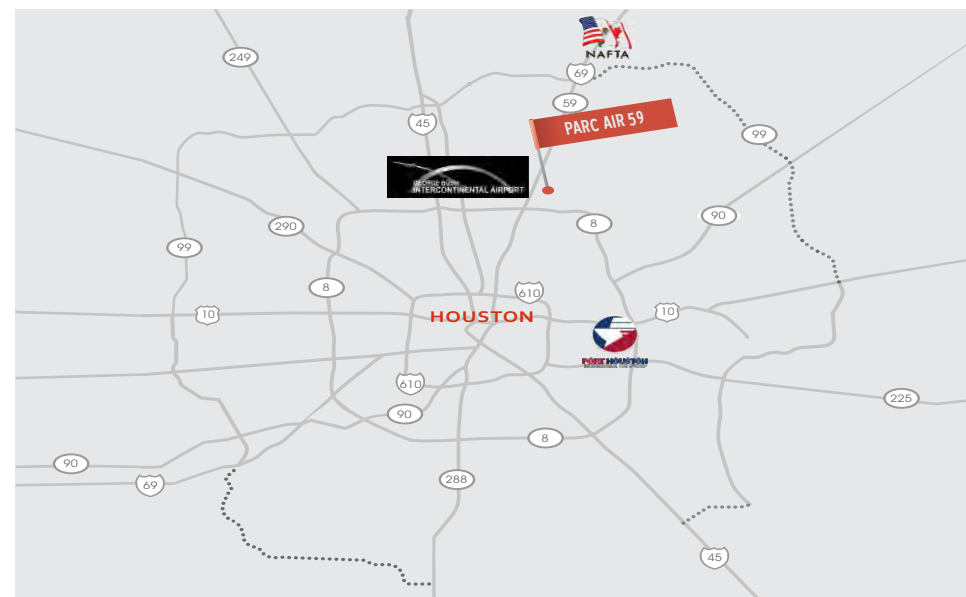


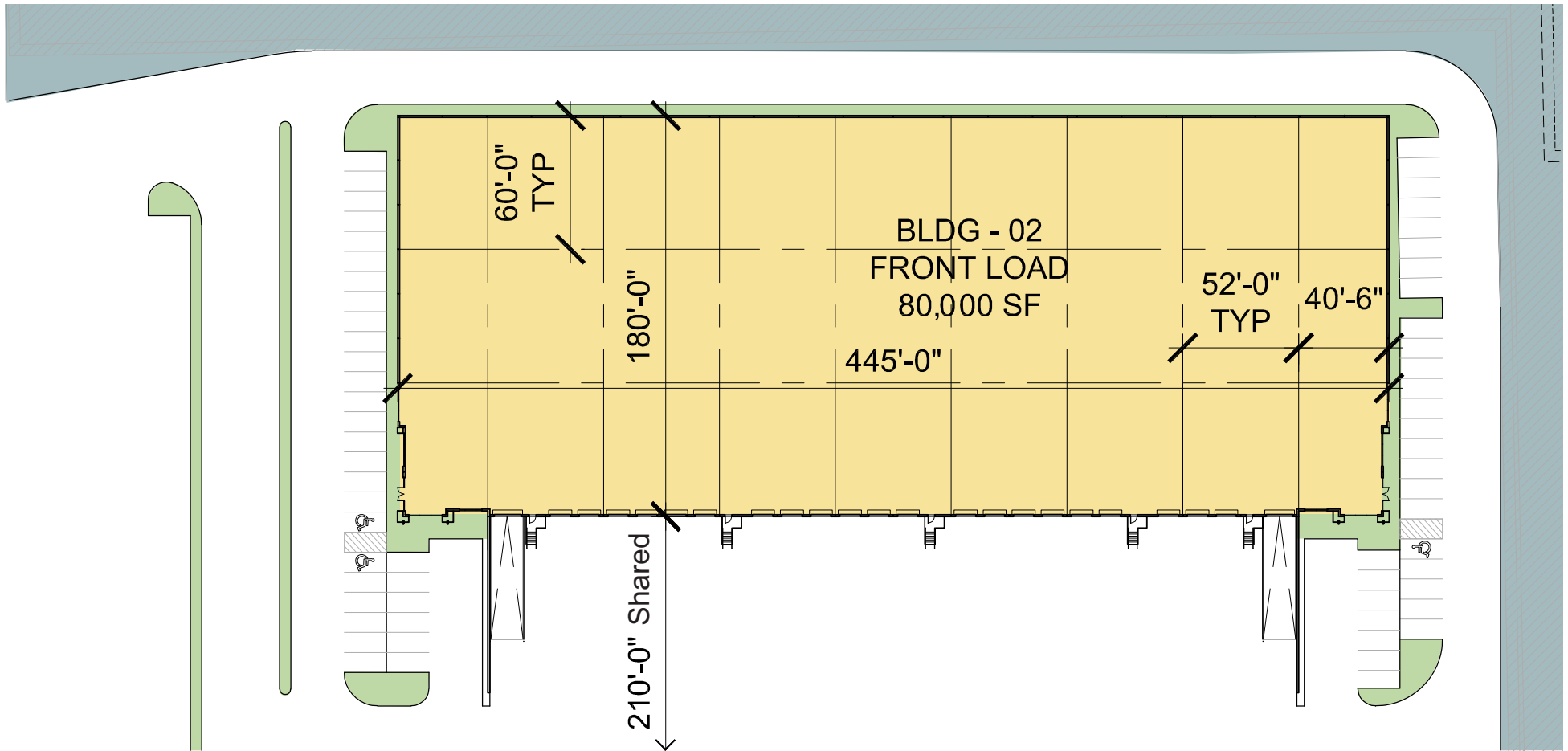
PARC AIR 59

BUILDING 2

18720 Eastex Freeway 59 | Humble, TX

SQUARE FEET:	80,000	PARKING SPACES:	57
MAX CONTIGUOUS:	80,000	TRUCK COURT:	210' (Shared)
MINIMUM DIVISIBLE:	22,000	DOCK DOORS:	21
BLDG. DEPTH:	180'	TRAILER PARKING:	0
CLEAR HEIGHT:	28'	SPRINKLER SYSTEM:	ESFR
TYPICAL BAY:	52' x 60'	CONFIGURATION:	Front Load
DRIVE-IN DOORS:	2		





FOR LEASING INFORMATION



ALLISON BERGMANN
allison.bergmann@cushwake.com
713 963 2865

NATHAN WYNNE
nathan.wynne@cushwake.com
713 345 1431

BEAU KALEEL
beau.kaleel@cushwake.com
713 963 2844

JASON DILLEE
jason.dillee@cushwake.com
713 345 1432

JACKSONSHAW

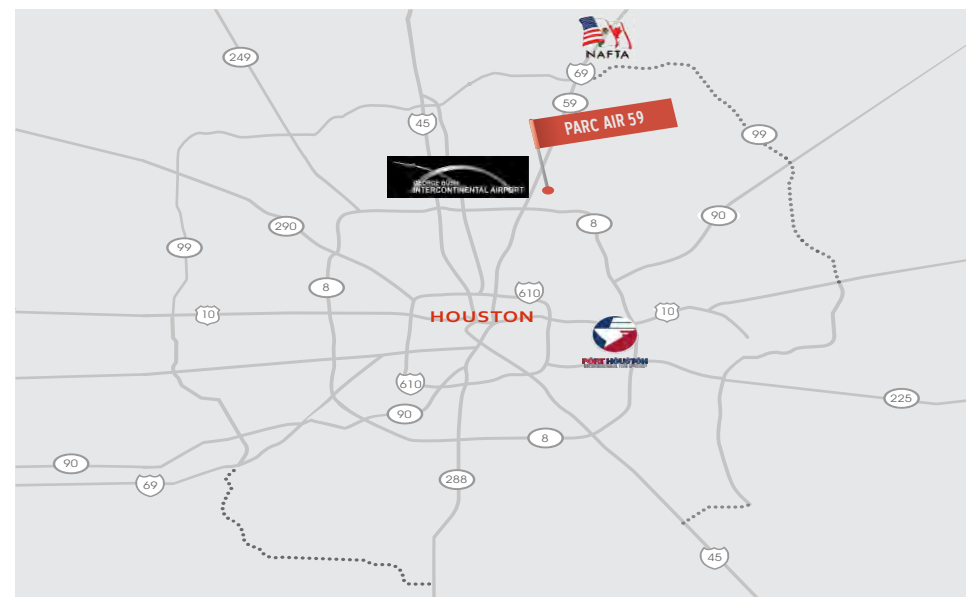


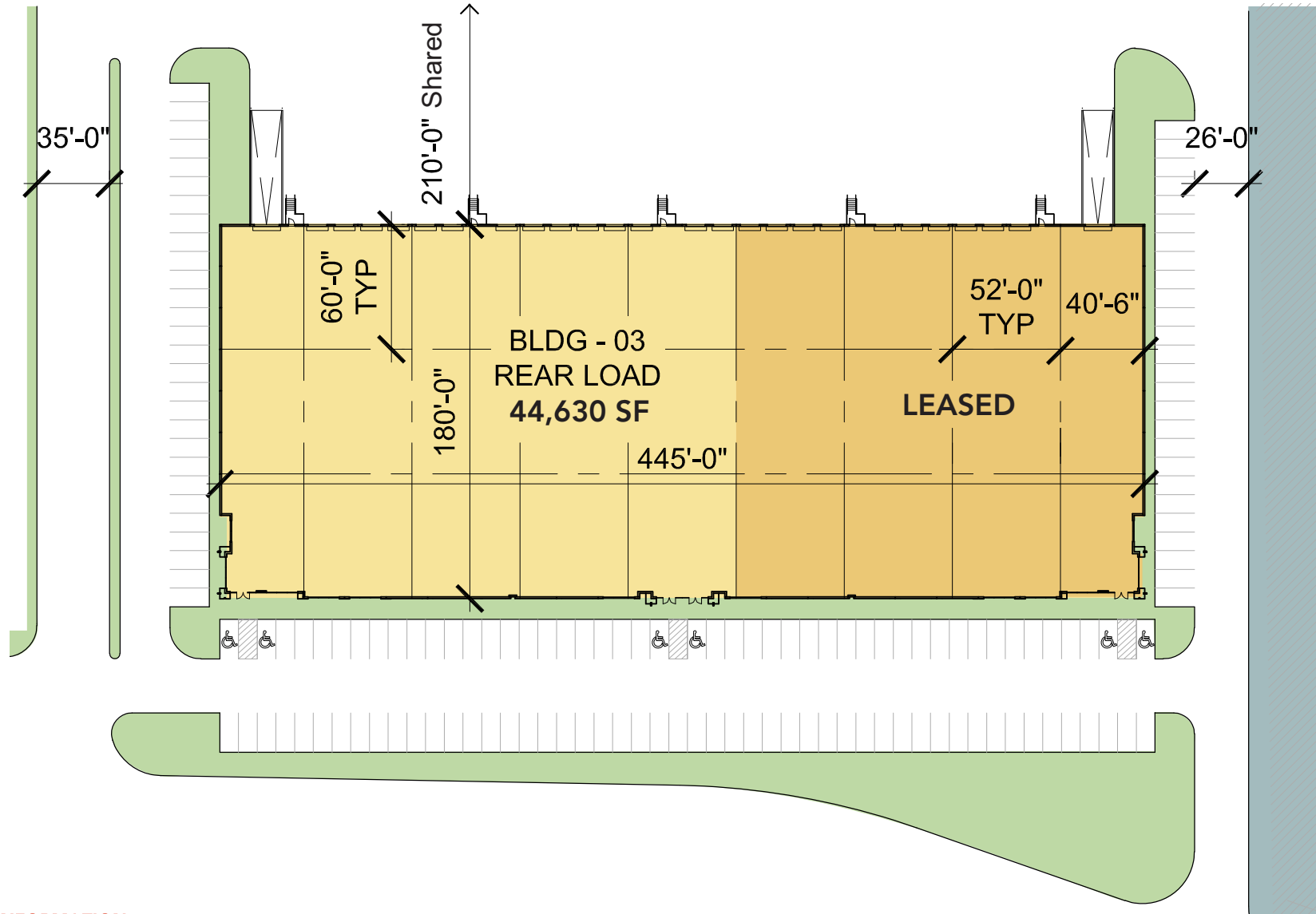
PARC AIR 59

BUILDING 3

18710 Eastex Freeway 59 | Humble, TX

SQUARE FEET:	44,630	PARKING SPACES:	95
MAX CONTIGUOUS:	44,630	TRUCK COURT:	210' (Shared)
MINIMUM DIVISIBLE:	14,000	DOCK DOORS:	14
BLDG. DEPTH:	180'	TRAILER PARKING:	0
CLEAR HEIGHT:	28'	SPRINKLER SYSTEM:	ESFR
TYPICAL BAY:	52' x 60'	CONFIGURATION:	Rear Load
DRIVE-IN DOORS:	1		





FOR LEASING INFORMATION



ALLISON BERGMANN
allison.bergmann@cushwake.com
713 963 2865

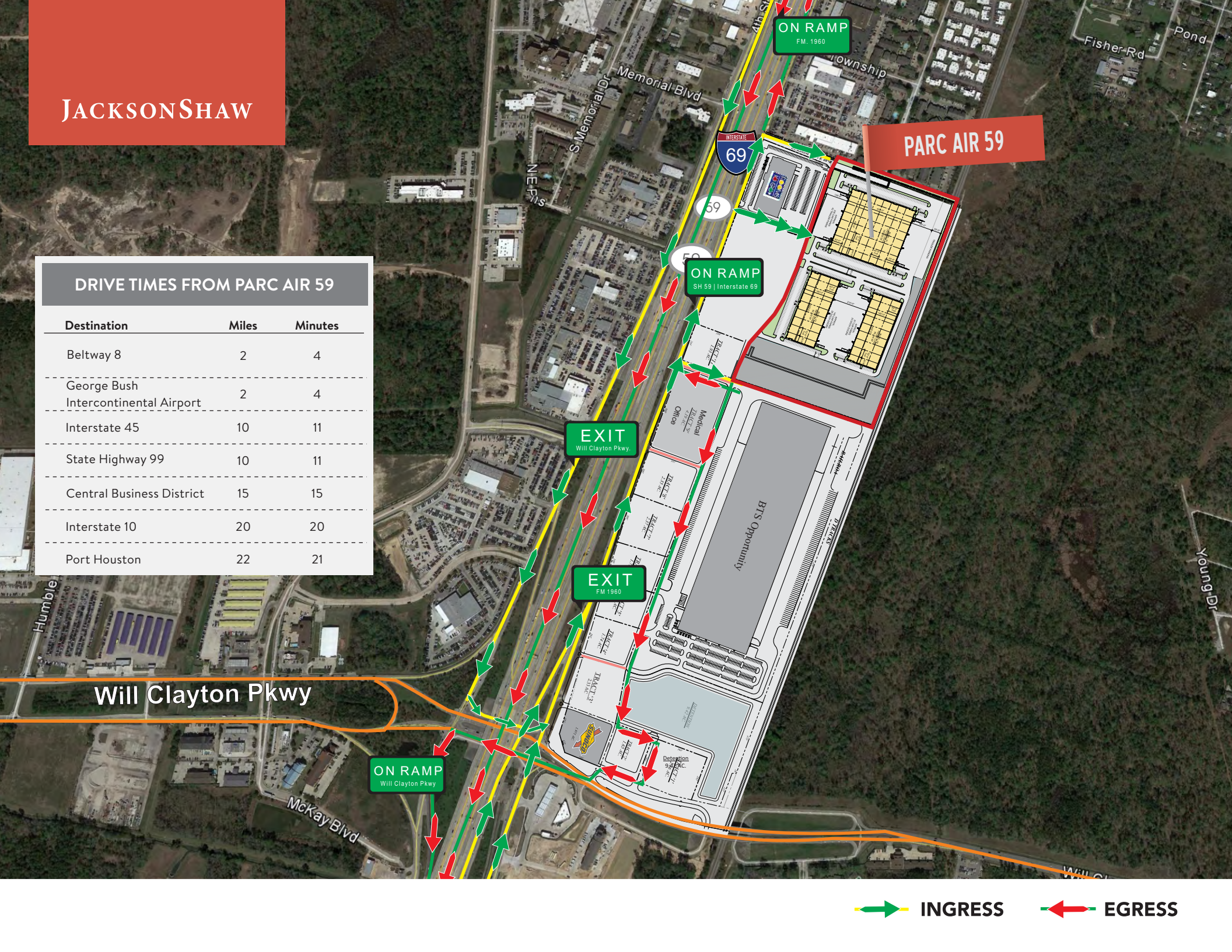
NATHAN WYNNE
nathan.wynne@cushwake.com
713 345 1431

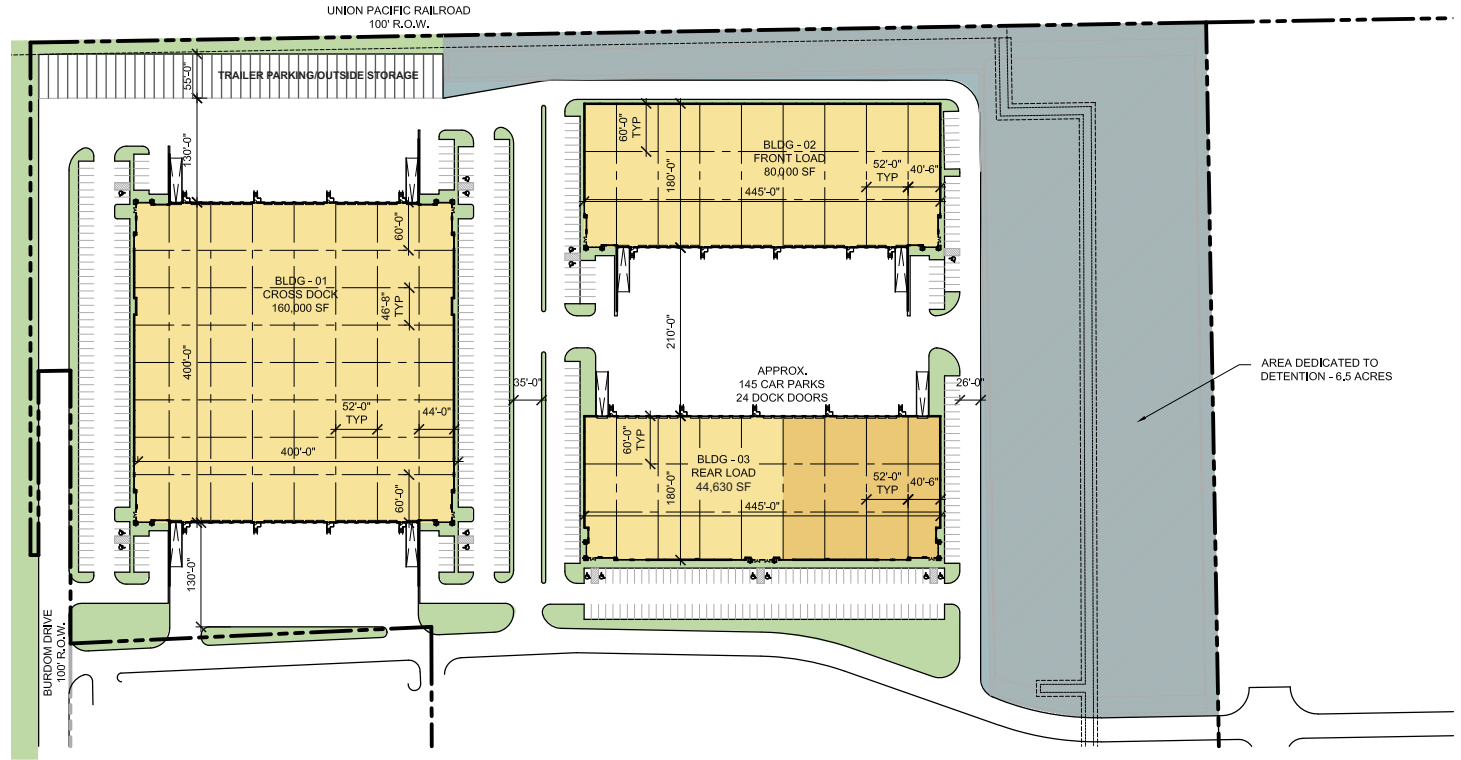
BEAU KALEEL
beau.kaleel@cushwake.com
713 963 2844

JASON DILLEE
jason.dillee@cushwake.com
713 345 1432

DRIVE TIMES FROM PARC AIR 59

Destination	Miles	Minutes
Beltway 8	2	4
George Bush Intercontinental Airport	2	4
Interstate 45	10	11
State Highway 99	10	11
Central Business District	15	15
Interstate 10	20	20
Port Houston	22	21





PARC AIR 59	BLDG. 1	BLDG. 2	BLDG. 3	TOTAL
BUILDING SIZE:	160,000 SF	80,000 SF	44,630 SF	284,630 SF
BUILDING CONFIG:	Cross Dock	Front Load	Rear Load	
DIMENSIONS:	400' long x 400' deep	445' long x 180' deep	445' long x 180' deep	
CLEAR HEIGHT:	32'	28'	28'	
FIRE PROTECTION:	ESFR	ESFR	ESFR	
TRUCK COURT:	130'/185'	210' (shared)	210' (shared)	
DOCK DOORS:	36	21	14	
DRIVE-IN DOORS:	4	2	1	
PARKING SPACES:	236	57	95	
TRAILER PARKING:	42	0	0	

FOR LEASING INFORMATION



ALLISON BERGMANN
 allison.bergmann@cushwake.com
 713 963 2865

NATHAN WYNNE
 nathan.wynne@cushwake.com
 713 345 1431

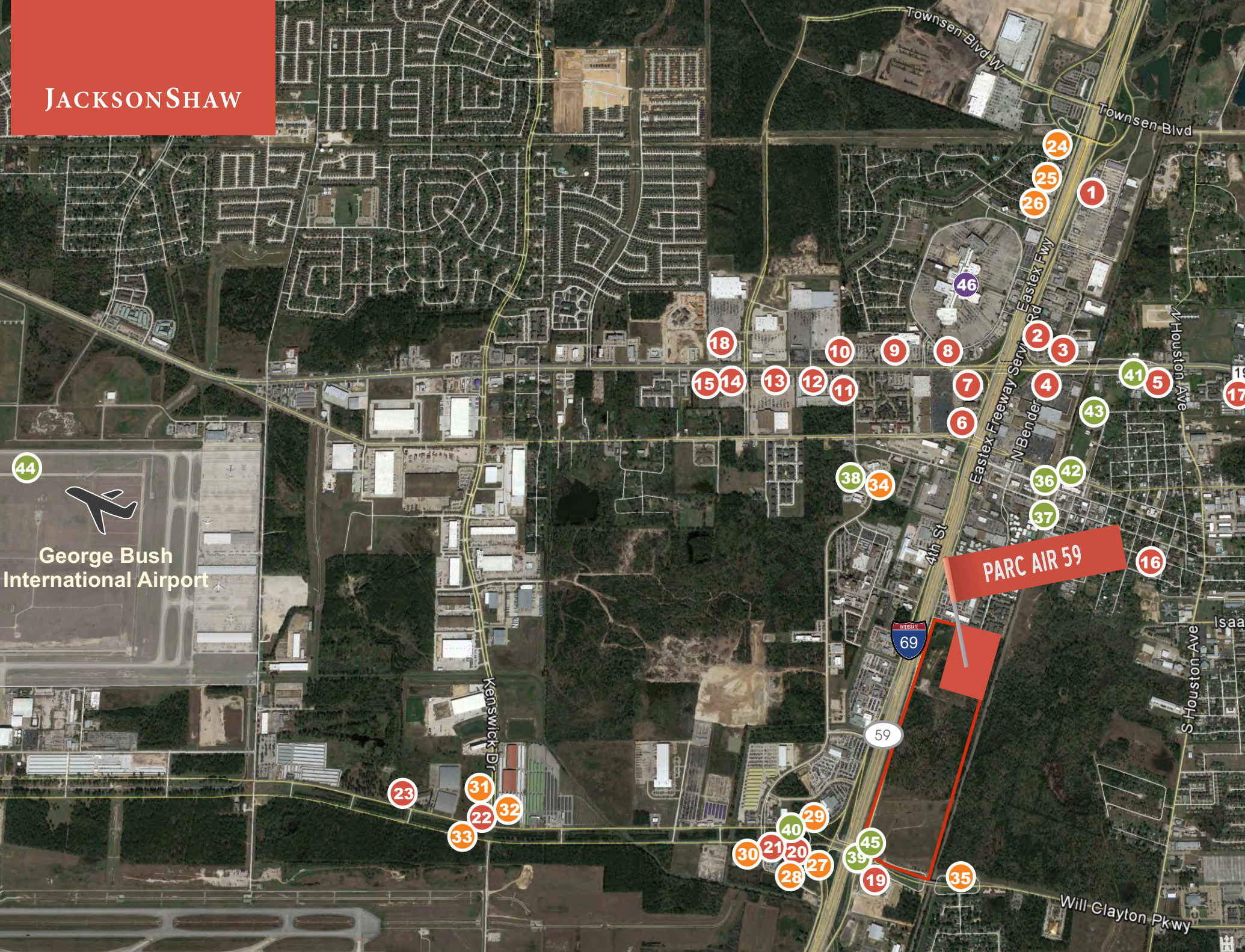
BEAU KALEEL
 beau.kaleel@cushwake.com
 713 963 2844

JASON DILLEE
 jason.dillee@cushwake.com
 713 345 1432

George Bush International Airport



44





Restaurants

- 1 Red Lobster
- 2 Chili's
- 3 Souper Salad
- 4 The Curry House
- 5 Domino's Pizza
- 6 IHOP
- 7 Jason's Deli
- 8 Papacito's Cantina
- 9 Dickey's BBQ
- 10 Golden Corral
- 11 Olive Garden
- 12 Logan's Roadhouse
- 13 Cheddars
- 14 FreeBirds
- 15 Ghengis Grill
- 16 Chex Nous
- 17 Sonic
- 18 Brooklyn Pizzeria
- 19 Whataburger
- 20 Waffle House
- 21 Fox's Pizza Den
- 22 Burger King
- 23 Dolphin Restaurant



Hotels

- 24 Country Inn & Suites
- 25 Fairfield Inn & Suites
- 26 Hampton Inn & Suites
- 27 Best Western
- 28 Sleep Inn & Suites
- 29 Baymont Inn & Suites
- 30 Holiday Inn Express
- 31 La Quinta
- 32 Holiday Inn
- 33 Ramada
- 34 Days Inn
- 35 Regency Inn & Suites



Services

- 36 Valero
- 37 Exxon
- 38 Texaco
- 39 Shell
- 40 Shamrock
- 41 Service King
- 42 Star Cleaners
- 43 Planet Fitness
- 44 George Bush Intercontinental Airport
- 45 Sunoco



Restaurants

- Casa Ole
- Chick-fil-A
- Chipotle
- Great Wraps Grill
- Marble Slab
- Sarku Japan



Retail

- Dillard's
- JCPenny
- Macy's
- Sears



FOR LEASING INFORMATION



ALLISON BERGMANN
allison.bergmann@cushwake.com
 713 963 2865

NATHAN WYNNE
nathan.wynne@cushwake.com
 713 345 1431

BEAU KALEEL
beau.kaleel@cushwake.com
 713 963 2844

JASON DILLEE
jason.dillee@cushwake.com
 713 345 1432