

1546-23

PARTITION OF THE ESTATE OF
LINNIE GRACE BUCKLEY IN THE SW 1/4
OF NW 1/4 OF SEC. 19, T5N-R1E.

DANIEL D. SANDEFUR

SCALE: 1" = 500'

FOR LIVES OF MRS. L.G. BUCKLEY

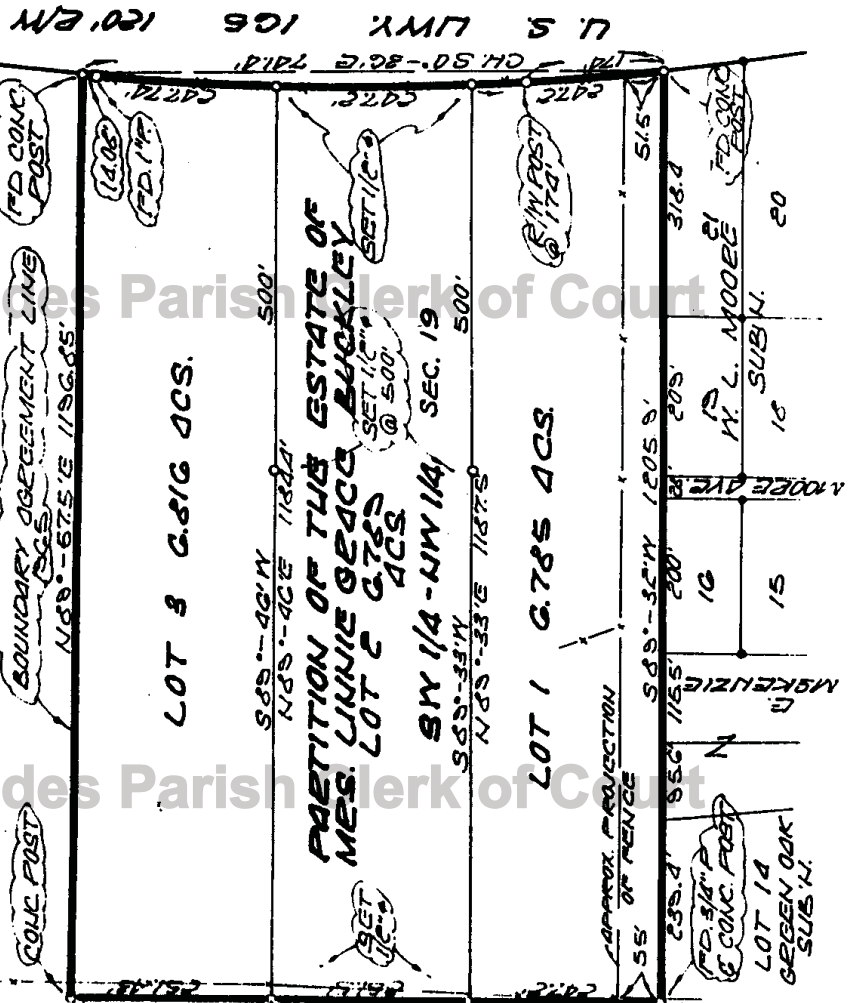
AT REQUEST " " " " " " B. Daniel D. Sandefur

Rapides Parish Clerk of Court

Rapides Parish Clerk of Court

Rapides Parish Clerk of Court

CAEL QUINN



L. M. COLE

W. V. DWYLL

11/05/15
249.35