



FOR LEASE

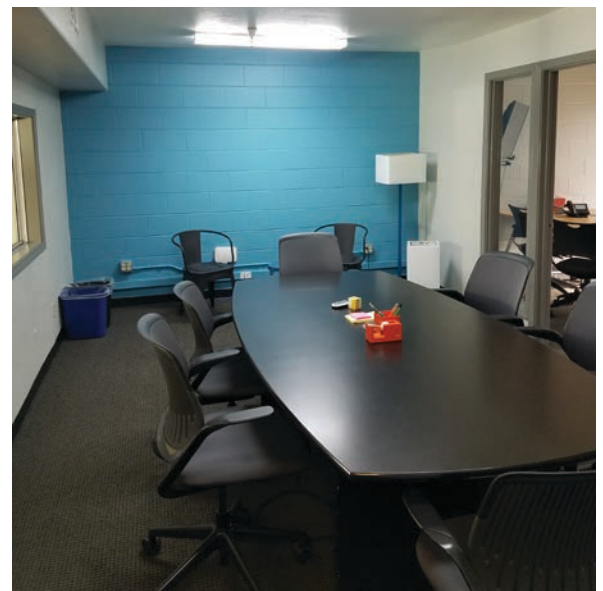
227 Forest Avenue

Palo Alto, California



Property Highlights:

- ±6,974 SF (Divisible to ±2,900 SF)
- Facade Renovation to be completed in 2019
- High Ceiling | Open Environment
- Building Signage
- Stand Alone, Single Tenant Building
- Walking Distance to all Downtown Palo Alto Amenities



Brad Altick

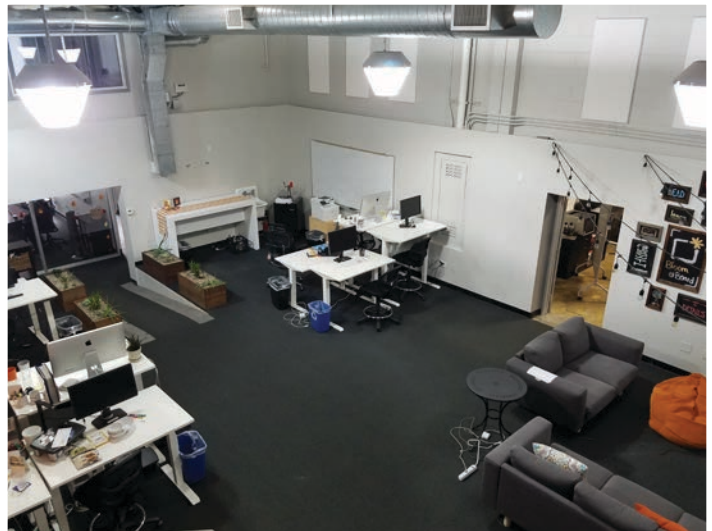
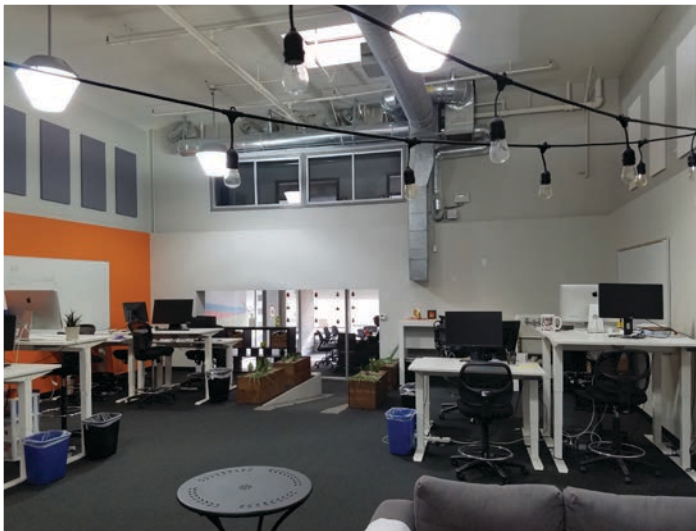
Managing Director
+1 650 320 0214
brad.altick@cushwake.com
LIC #01877935

Ben Paul

Executive Managing Director
+1 650 401 2123
ben.paul@cushwake.com
LIC #01210872

525 University Avenue, Suite 220
Palo Alto, California 94301
main +1 650 852 1200
fax +1 650 856 1098
cushmanwakefield.com

Interiors:



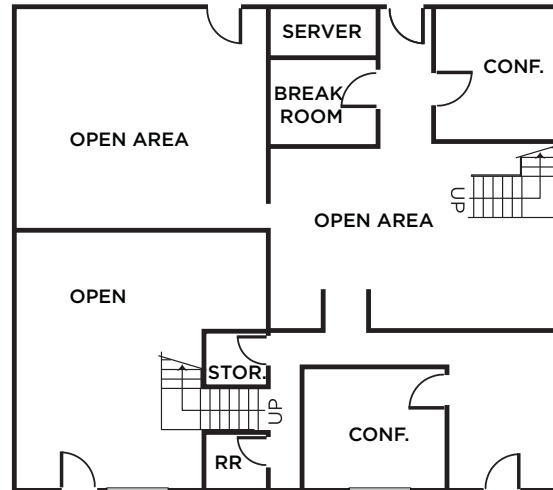
Brad Altick
Managing Director
+1 650 320 0214
brad.altick@cushwake.com
LIC #01877935

Ben Paul
Executive Managing Director
+1 650 401 2123
ben.paul@cushwake.com
LIC #01210872

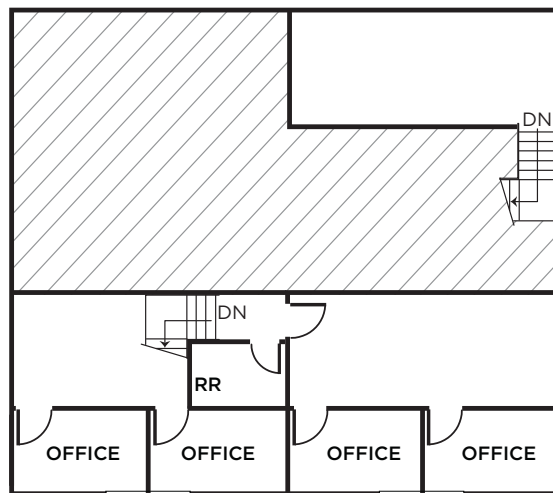
525 University Avenue, Suite 220
Palo Alto, California 94301
main +1 650 852 1200
fax +1 650 856 1098
cushmanwakefield.com

Floor Plan:

±6,974 SF



FIRST FLOOR



SECOND FLOOR

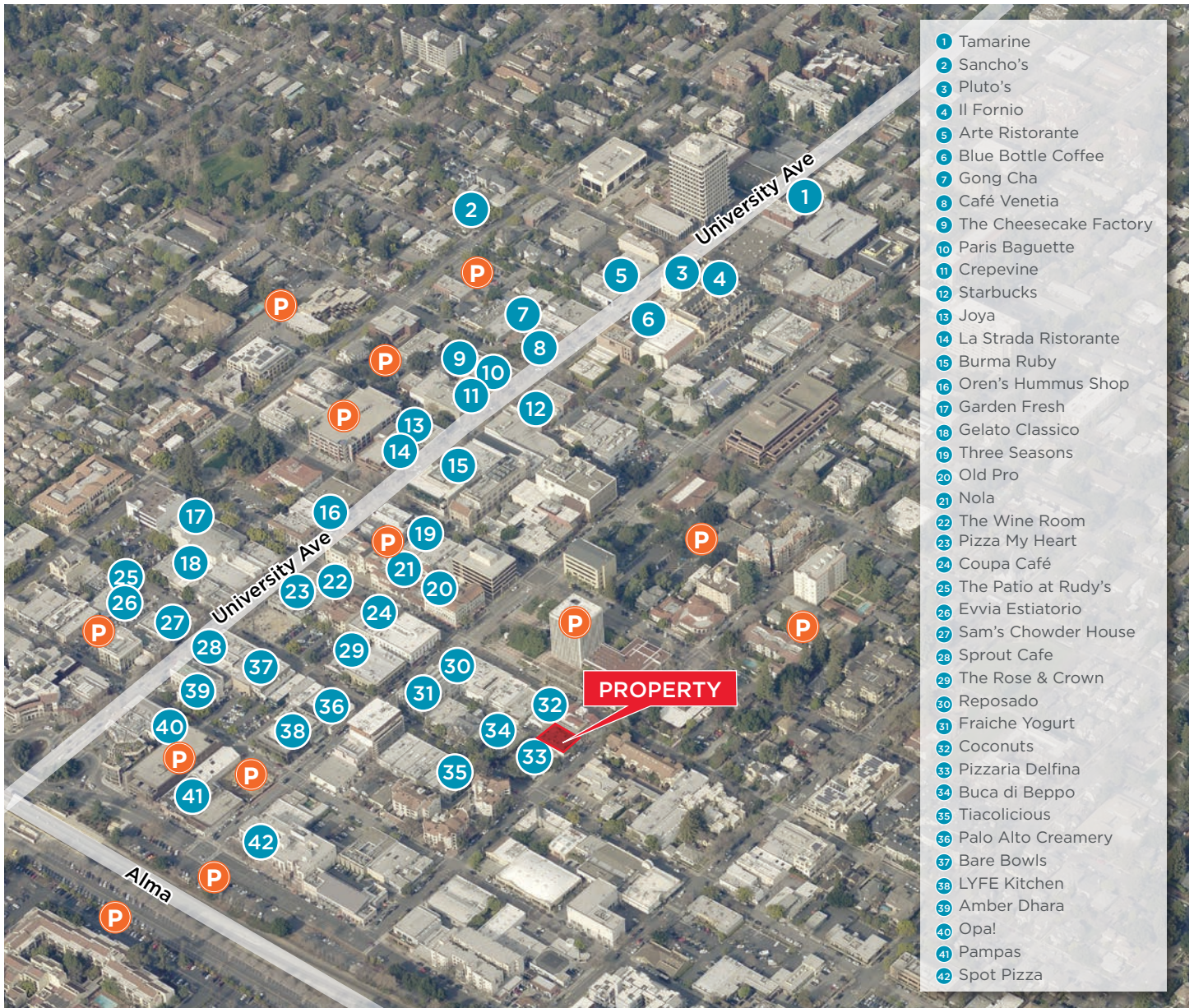
Floor plan not to scale

Brad Altick
Managing Director
+1 650 320 0214
brad.altick@cushwake.com
LIC #01877935

Ben Paul
Executive Managing Director
+1 650 401 2123
ben.paul@cushwake.com
LIC #01210872

525 University Avenue, Suite 220
Palo Alto, California 94301
main +1 650 852 1200
fax +1 650 856 1098
cushmanwakefield.com

Downtown Palo Alto Amenities:



- 1 Tamarine
- 2 Sancho's
- 3 Pluto's
- 4 Il Forno
- 5 Arte Ristorante
- 6 Blue Bottle Coffee
- 7 Gong Cha
- 8 Café Venetia
- 9 The Cheesecake Factory
- 10 Paris Baguette
- 11 Crepevine
- 12 Starbucks
- 13 Joya
- 14 La Strada Ristorante
- 15 Burma Ruby
- 16 Oren's Hummus Shop
- 17 Garden Fresh
- 18 Gelato Classico
- 19 Three Seasons
- 20 Old Pro
- 21 Nola
- 22 The Wine Room
- 23 Pizza My Heart
- 24 Coupa Café
- 25 The Patio at Rudy's
- 26 Evvia Estiatorio
- 27 Sam's Chowder House
- 28 Sprout Cafe
- 29 The Rose & Crown
- 30 Reposado
- 31 Fraiche Yogurt
- 32 Coconuts
- 33 Pizzeria Delfina
- 34 Buca di Beppo
- 35 Tiacolicious
- 36 Palo Alto Creamery
- 37 Bare Bowls
- 38 LYFE Kitchen
- 39 Amber Dhara
- 40 Opa!
- 41 Pampas
- 42 Spot Pizza

Brad Altick
 Managing Director
 +1 650 320 0214
 brad.altick@cushwake.com
 LIC #01877935

Ben Paul
 Executive Managing Director
 +1 650 401 2123
 ben.paul@cushwake.com
 LIC #01210872

525 University Avenue, Suite 220
 Palo Alto, California 94301
 main +1 650 852 1200
 fax +1 650 856 1098
cushmanwakefield.com