

For Lease



Settlers Corner 900 Main Street Oregon City, Oregon 97045

2,710 Square feet of office space

Reception area

Two private offices

Conference room

Bull pen

Kitchenette

2 ADA bathrooms

2 Off street parking places

15 Foot exposed wood ceilings

Monument and building signage available

Lease Rate \$14.00 NNN

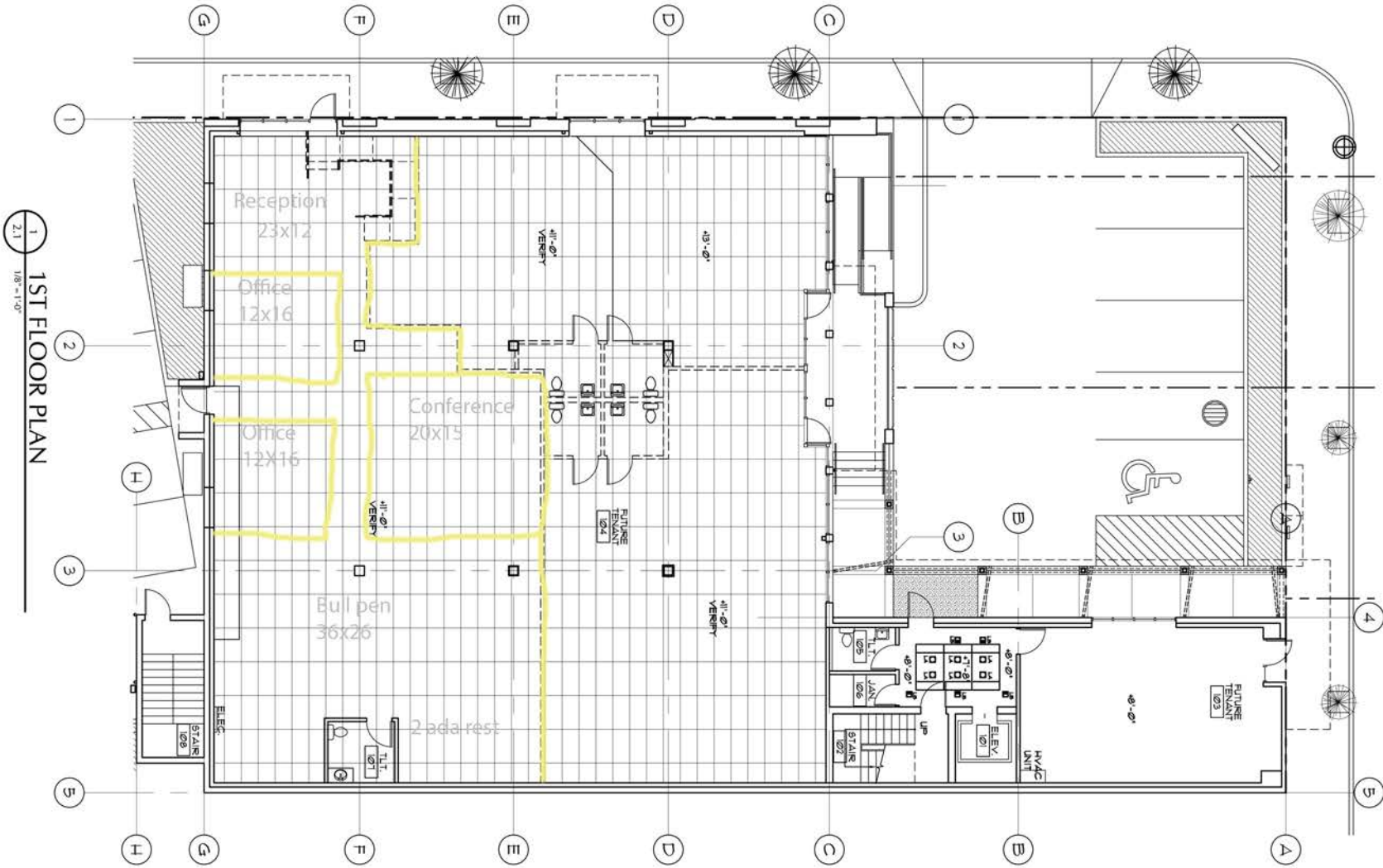
Call Darin 503.292.6922



Go to www.downtownoregoncity.org to learn more about the Historic Downtown revival



Darin Castagno
Principal Broker
Castagno Real Estate Inc.
Castagnoestate@aol.com
503.292.6922



1 1ST FLOOR PLAN
1/8"=1'-0"



Cleaning Site
Start here
(for now)

Class Lab

















EXIT

TO
HISTORIC
LEON CITY
Incorporated 1842

