

15 Corporat PIS, Suite 100, Piscataway, NJ 08854, Middlesex County

DATA CENTER FOR LEASE

PROPERTY HIGHLIGHTS:

Building Management

- Dedicated 24x7 facilities management team
- BMS system monitors M&E operation with facility to:
 - » Ensure stability of the environment
 - » Monitor key electrical and mechanical systems
 - » Enable interface between key systems
 - » Provide data gathering
 - » Interlink life safety systems in the event of alarm activation
- Professional property management group
- Global Cloud Connect: Direct access time over 1900 locations around the world for public & multi-cloud services

Security

- Premises controlled by 24x7 on-site security personnel
- Access control using electronic key card system
- Intruder and access alarms on select areas
- Multiple CCTV camera (interior and exterior)
- Secure managed delivery and loading areas

15 Corporate PIS, Piscataway, NJ 08854, Middlesex County

Lakme Kota info@icommercialgrp.com 609-712-3364

ADDITIONAL HIGHLIGHTS

TECHNICAL SPECIFICATIONS

Gross Area: 16000 square raised floor data center (white space)

Structure: • Concrete tilt-up construction 9 (>6" thickness)

- No roof penetrations or water above technical areas
- Typical floor loading of 200 lbs/ft²
- 16'7" of clear height

- Raised floors with anti-static tiles and a minimum height of at least 14' to underside of deepest beam
- 24/7 loading dock with Gated Access Control

POWER

(Mains & Emergency)

- Minimum N+1 redundancy on power supply from Utility
- Mains power supplied via diverse 2 x 13.2 kV @ 8 MW incoming feeders
- Multiple fully redundant UPS systems for true redundancy
- Multiple on-site diesel fuel tanks support > 168 hours (7 days) run time

CONTROLLED ENVIRONMENT

- Multiple chillers and cooling towers provide fully redundant cooling
- Temperature in technical space maintained at 70 degrees F (+/- 2 degrees F)
- Humidity range of 50% (+/- 10%) in technical areas
- Three (3) air-cooled chillers installed supplying 250 tons (3 MM BTU) of cooling per chiller
- CRAHs provide conditioned air into technical spaces
- Diverse chilled water distribution throughout facility

FIRE DETECTION & SUPPRESSION

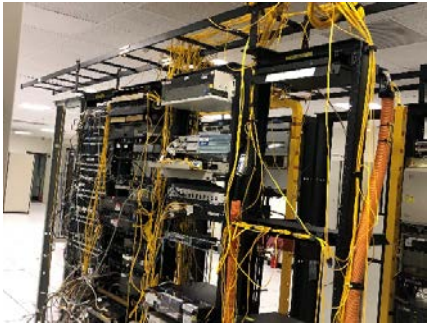
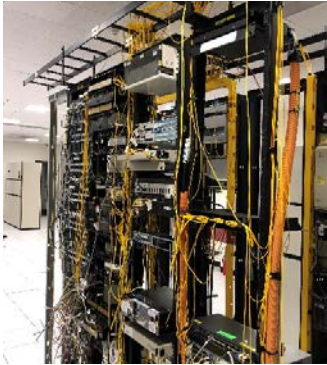
- Analog addressable fire detection system in all areas (smoke and heat manual pull units)
- Very early smoke detection and alarm system (VESDA) in the technical areas
- Gas suppression system to all technical, critical, and selected operational areas
- Sprinklers in corridors, media storage and selected plant rooms with water or HALON and monitoring as required
- ANSI/BICSI/TIA compliant MDF; Copper and Fiber distribution systems
- Smoke and gas extraction systems

TELECOMMUNICATIONS • Access to multiple telecommunications providers located in dedicated Meet Me Rooms (MMRs). Via diverse dedicated connections.

- Diverse cable entry points (x4) with combination of 8" concrete PVC conduit and 1.5" inner ducts
- Steel conduit (EMT) in sealed access configuration to all customer-controlled areas
- Multiple connection points to each suite and cage
- Roof space available for satellite and antenna equipment

ADDITIONAL SERVICES

- Private office space up to 4000 Sqft available in the total 16000 Sqft

















Pricing Approximate

50 KW Minimum of Power Use

. \$150/month per KW

. Typically: 25-50 racks

250 KW Minimum of Power Use

. \$125/month per KW

. Typically: 100-300 racks

PROMOTIONAL CROSS-CONNECT OPTIONS

- 1 Gbps to Equinix = \$1500 / month
- 10 Gbps direct to 1900+ Global Cloud Connect locations (any global data center) = \$4500 / month

All the information provided are believed to be the true facts and are provided by the Landlord.
Currently closed since the start of Pandemic. But slight changes and adding some small parts to the
equipment can get back into old glorious times again with in no time. All the Best