



*Phase I Under Construction - Complete 2nd Qtr 2019*

# Premier Airport Park

Airport Haul Road, Fort Myers, FL 33913

16,693- 106,836 SF | FOR LEASE | ALL OR PART



**Colliers**  
INTERNATIONAL



# PREMIER AIRPORT PARK

PREMIER AIRPORT PARK is a 225.7+ acre Industrial Planned Development (IPD) entitled for 1,875,000 SF of industrial, manufacturing, warehousing, high-cube warehousing and office park use (Project). The Project is being developed under the management of Principal Real Estate Investors (Principal), Des Moines, IA. Principal Real Estate Investors manages or sub-advises \$74.9 billion in commercial real estate assets\*. The firm's real estate capabilities include both public and private equity and debt investment alternatives. Principal Real Estate Investors is the dedicated real estate group of Principal Global Investors, a diversified asset management organization and a member of the Principal Financial Group®.

\*As of 30 September 2017

Within close proximity to Southwest Florida International Airport (RSW), Interstate 75 (I-75), Florida Gulf Coast University and easy access to all markets, this Project will serve existing business wishing to expand, and welcoming new businesses seeking Class-A industrial/warehousing facilities in Southwest Florida. RSW offers domestic and international passenger and freight flight options, and the Project is also situated in close proximity to numerous brand name hotels, a wide variety of fast food, fast casual and fine dining options, and range of retail opportunities to support needs of employees, executives, vendors, suppliers and visitors.





# PREMIER AIRPORT PARK

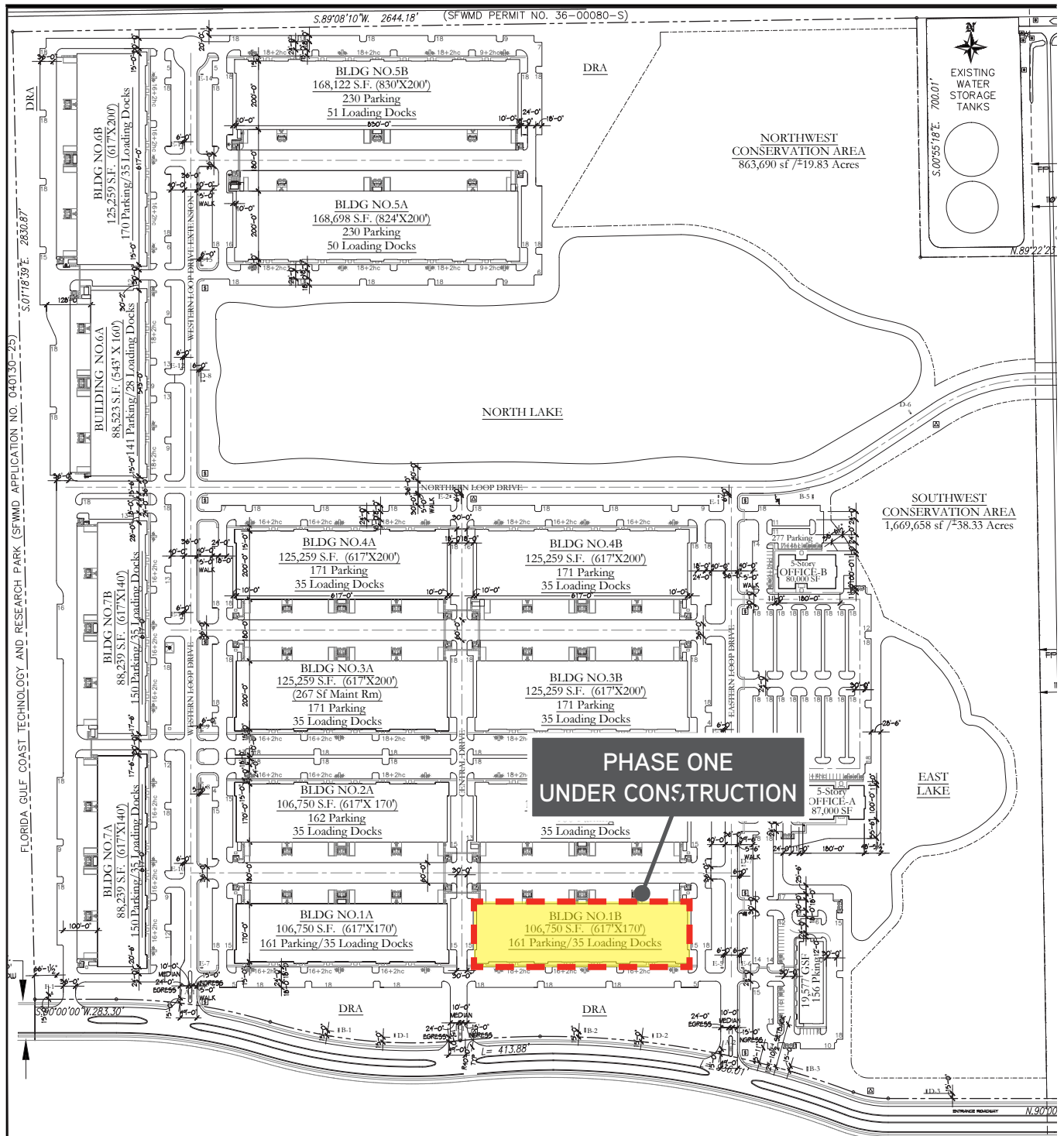
## PROPERTY DETAILS

AVAILABLE SPACE:	BLDG-1B = 106,836 SF (will divide) / DOCK HIGH, REAR LOADED
CLEAR HEIGHT:	32' CLEAR HEIGHT
BACK TO FRONT COLUMN SPACING:	170' TOTAL - 60' SPEED BAY IN REAR, 55' CENTER, 55' FRONT
SIDE TO SIDE COLUMN SPACING:	61.7' TOTAL - 38'6" WIDE END CAPS, 54' WIDE INTERIOR BAYS
TENANT SPACES   END CAPS	16,693 - 25,837 SF
TENANT SPACES   INTERIOR:	9,143 and up
TRUCK DOCKS:	30-9' WIDE X 10' TALL OPENINGS ALONG TRUCK COURT AREA. DRIVE-IN RAMPS AT EACH END OF BUILDING (16' WIDE BY 14' TALL OPENINGS) 2 - DRIVE-IN RAMPS AT CENTER OF BUILDING (16' WIDE BY 14' TALL OPENINGS)
TRUCK COURT:	180' FOR BACK TO BACK BUILDINGS, 120' FOR SINGLE LOAD BUILDING
PARKING:	183 SPACES / ALLOWS FOR MAXIMUM 32.5% OFFICE/ SHOWROOM USE
UTILITIES:	PUBLIC WATER & SEWER, 1,600 AMP THREE-PHASE ELECTRICAL WITH UP TO AN ADDITIONAL 1,200 AMPS AVAILABLE, CENTURY LINK TELEPHONE, CABLE AND INTERNET SERVICE
CONSTRUCTION DETAILS:	TILT WALL, IMPACT GLASS WINDOWS, TPO MEMBRANE ROOF SYSTEM, ESFR FIRE SUPPRESSION, 6" THICK RE-INFORCED 4,000 PSI CONCRETE SLAB, 60' WIDE CONCRETE TRUCK COURT APRON

Planned and constructed in accordance with Class A industrial standards for bulk storage distribution and manufacturing. The Project location and the quality of the building and site infrastructure improvements are ideal for corporate presence.

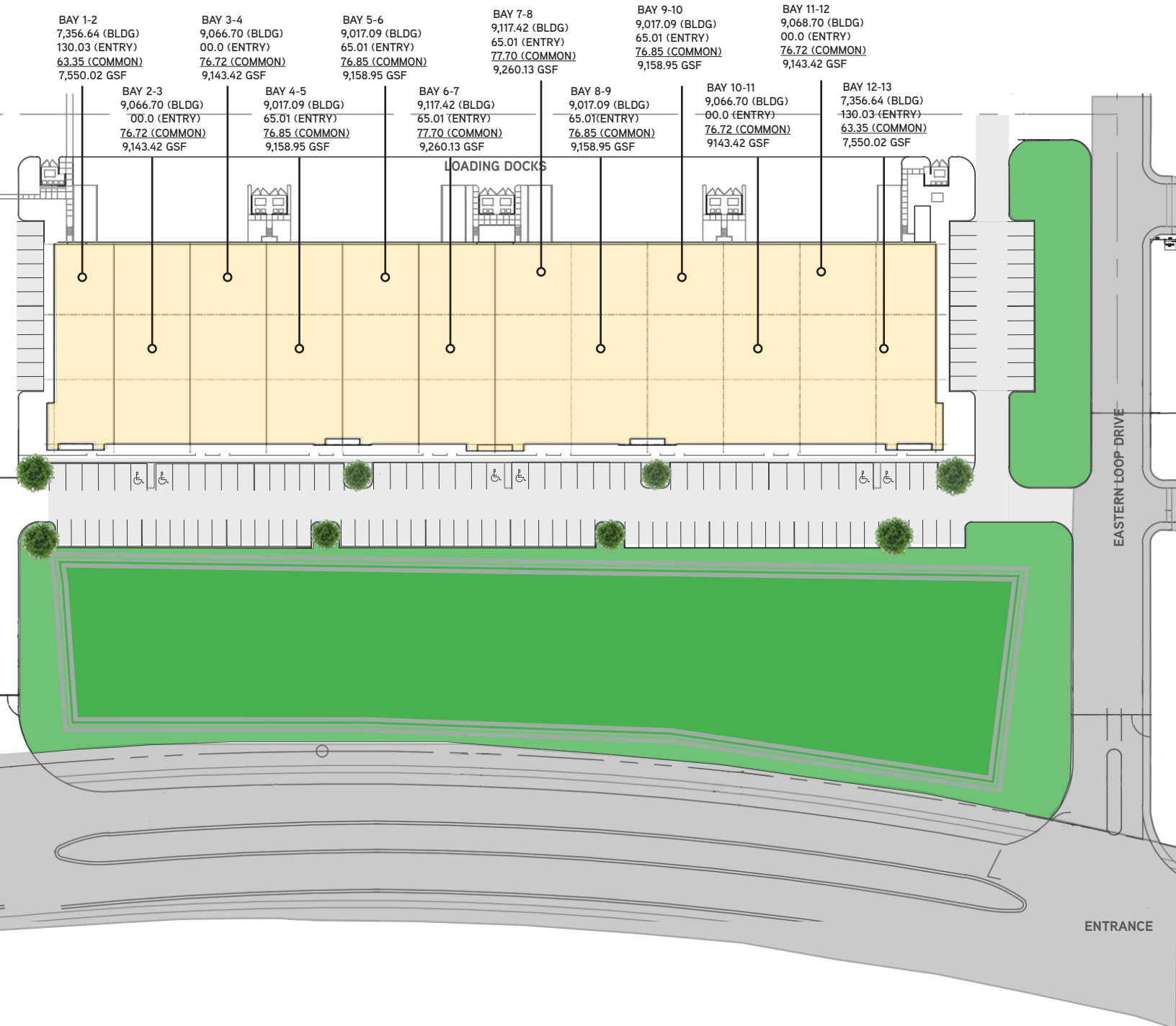
Project under construction with Building 1B completion scheduled for 2nd quarter of 2019.

# SITE PLAN



# PREMIER AIRPORT PARK

## BUILDING PLAN





# PREMIER AIRPORT PARK

## LOCATION

The Project Is accessed from Interstate I-75 at the Alico Road interchange (Exit 128) and situated along Airport Haul Road to the east. The Project is bounded by Southwest Florida International Airport to the north and Airport Haul road to the east. Existing Lee County potable water storage tanks and future FPL substation site are located adjacent to the northeast corner of Project and separated from approved development area by a 43+/- acre Conservation Area open space.

Over the period of 2018 through 2020 Lee County will be expanding Alico Road to a four-lane divided highway from Ben Hill Griffin Parkway to approximately 1,000' east of Airport Haul Road. County will also be reconstructing the Alico/Airport Haul Road intersection to a full median opening align with the proposed CR-951 roadway connection to Corkscrew Road to the south – providing direct access to ample management housing opportunities. The Alico/AHR intersection is planned for future signalization when warranted.

Lee County long range transportation plans also provide for Alico Road extension to the northeast connecting to SR-82 in Lehigh Acres – providing direct access to worker housing opportunities – and an road connecting Airport Haul Road to Ben Hill Griffin Parkway extending in part along the Project southern boundary. Public bus transportation is also proposed to serve the Project along Airport Haul Road with routes along Alico and Ben Hill Griffin Pkwy to the south and west, and through the Airport, Treeline Road and Daniels/Gateway Roads to the north and east.





jetBlue Park

Spring Training Home of the Boston Red Sox

SKYPLEX

DANIELS PARKWAY

LEE COUNTY PORT AUTHORITY  
Southwest Florida  
International Airport

PREMIER AIRPORT PARK

TERMINAL ACCESS RD



ALICO ROAD - EXIT 128

GULF COAST TOWN CENTER



SHOPPES AT  
UNIVERSITY PLAZA



Wild Blue  
1,000 Planned  
Residences

Center Place  
1,950 Planned  
Residences

BEACH & GOLF CLUB  
MIROMAR LAKES  
We are where you want to be

ESTERO PARKWAY

NORTH





# PREMIER AIRPORT PARK

*Convenient accessibility* to Southwest Florida International Airport, Interstate 75, and several east-west arterials make this Project an ideal centrally situated distribution facility with convenient access to the following regional business and transportation hubs within Florida:

- 35 +/- miles from **downtown Naples, FL** (via I-75 / Co Rd 886 / US-41)
- 90 +/- miles from **downtown Sarasota, FL** (via I-75 / FL-780)
- 110 +/- miles from **Port Manatee, Palmetto, FL** (via I-75 / I-275 / US-41)
- 125 +/- miles from **Fort Lauderdale International Airport** and **Port Everglades** (via I-75 / I-595)
- 140 +/- miles from **Port of Tampa** (via I-75 / FL-618)
- 140 +/- miles from **Port of Fort Pierce** (via I-75 / FL-80 / FL-70)
- 145 +/- miles to **Tampa International Airport** via I-75 / I-275)
- 150 +/- miles to **Miami International Airport** and **Port of Miami** (via I-75 / SR-826 / SR-836)
- 1-75 +/- miles to **Orlando International Airport** via I-75 to I-4)
- 340 +/- miles to **Jacksonville Airport** and **Port of Jacksonville** (via I-75, I-10, and I-295)





PREPARED BY:

# Colliers

INTERNATIONAL

COLLIERS INTERNATIONAL  
13241 University Dr., Suite# 101  
Fort Myers, FL 33907  
239 418 0300  
[www.collier.com](http://www.collier.com)

## CONTACT US

---

**DAN MILLER**  
239 689 4900  
[dan.miller@colliers.com](mailto:dan.miller@colliers.com)

**FRED KOLB, MBA, CCIM**  
239 985 8081  
[fred.kolb@colliers.com](mailto:fred.kolb@colliers.com)

