

For Lease

710 E. State Parkway, Unit B, Schaumburg, IL

33,900 SF



PROPERTY FEATURES:

- Located in the Prestigious Woodfield Business Center
- High Image Facility Proximate to Hotels, Restaurants, Retailers, Etc.
- Recently Refurbished Finishes
- Floor Drains with Triple Catch Basins- Originally Designed for Vehicle Storage
- 22' Clear Ceilings

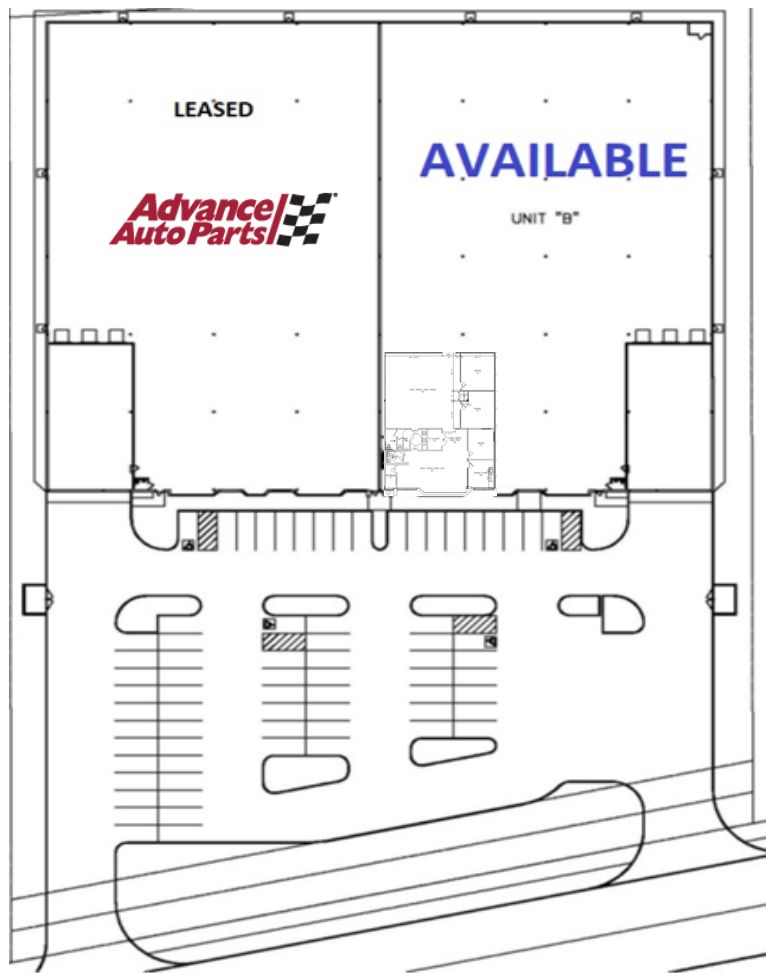


Contact:

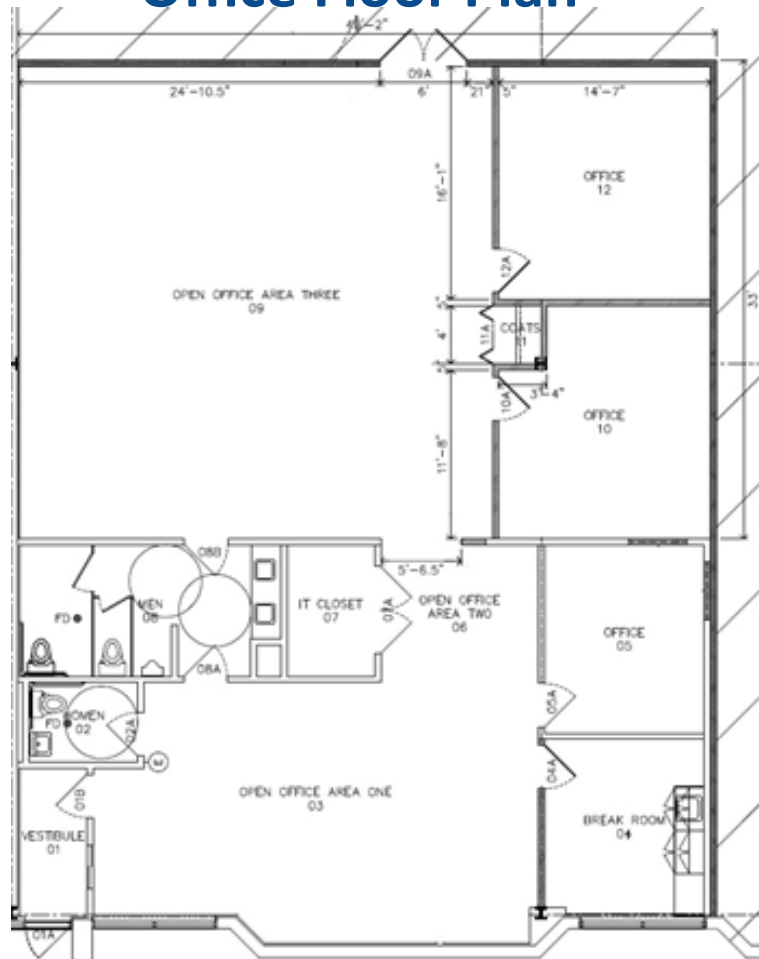
Dan Jones, SIOR, Managing Broker
847-310-4299
djones@entrecommercial.com

Dan Benassi, SIOR
847-310-4298
dbenassi@entrecommercial.com

Sam Deihs
224-202-6290
sdeihs@entrecommercial.com



Office Floor Plan



PROPERTY SPECIFICATIONS:

- Building Size: 67,817 SF
- Office: 2,900 SF
- Land Site: 3.5 Acres
- Loading: 3 Interior Truck Docks
1 DID
- Age: 1981
- Ceilings: 22'
- Power: 400 Amps @ 120-208 V
- Sprinklered: Yes
- Bay Sizes: 36' x 38'
- Parking: 42 Cars
- Zoning: M-P
- Real Estate Taxes: \$2.61psf
- CAM (Est.): \$0.87psf (2019 budget)
- Lease Rate: \$4.75psf, NNN (~\$8.23psf MG)

Contact:

Dan Jones, SIOR, Managing Broker
847-310-4299

djones@entrecommercial.com

Dan Benassi, SIOR
847-310-4298

dbenassi@entrecommercial.com

Sam Deihns
224-202-6290

sdeihs@entrecommercial.com

For Lease

710 E. State Parkway, Unit B, Schaumburg, IL

33,900 SF

