

2325 WEST NORTH AVENUE

BUCKTOWN, CHICAGO, IL

RETAIL SPACE AVAILABLE



RETAIL SPACE AVAILABLE
2325 W. NORTH AVENUE
 Bucktown | Chicago, IL



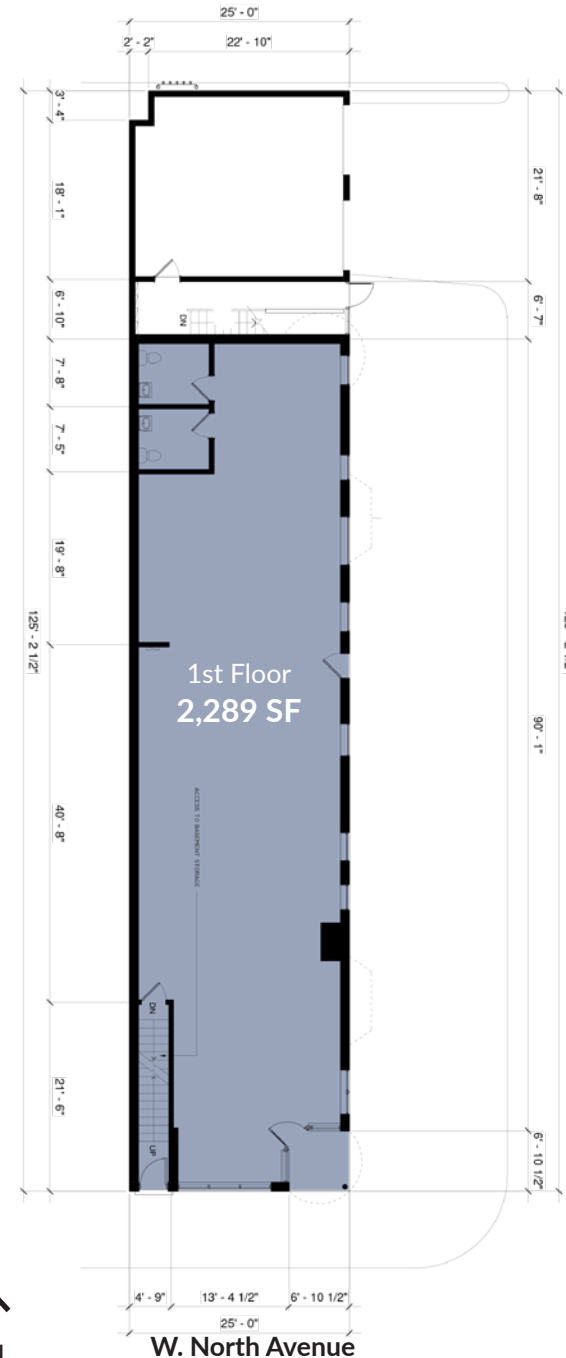
SPACE AVAILABLE

2,289 SF

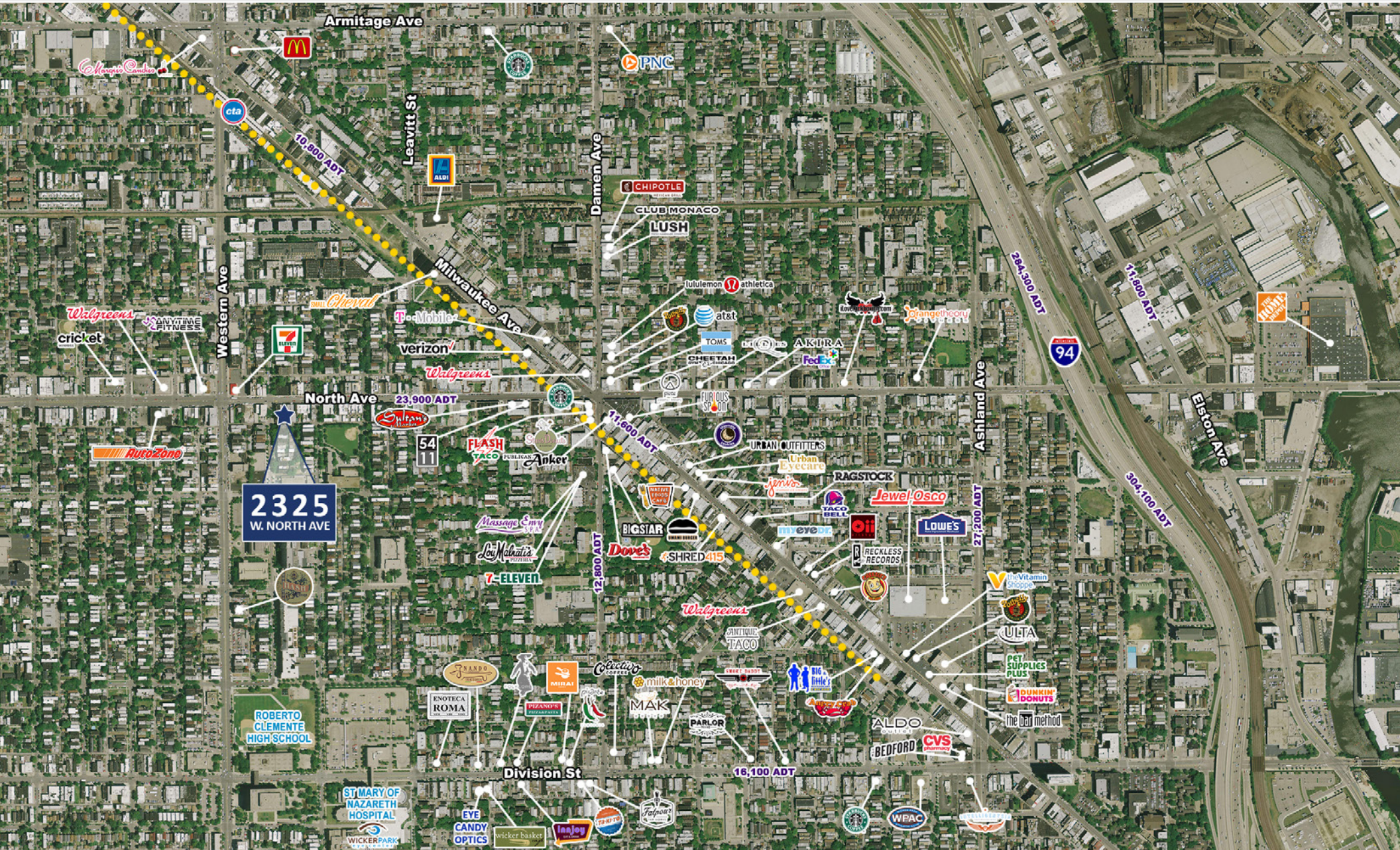
SITE SUMMARY

- Opportunity for sidewalk seating for restaurant user
- Located in the heart of Wicker Park / Bucktown on North Avenue, just west of the Damen / North / Milwaukee intersection
- Extremely dense surrounding residential population
- 41,700 ADT at the intersection of North & Claremont Avenues
- 3,800,000 annual riders at Damen and Western Blue Line “L” stops
- This area is home to some of the hottest dining and retail destinations in Chicago, notably Piece Brewery, Big Star Taco, LoKaL, Furious Spoon, Small Cheval, Paradise Park, Shinola, Urban Outfitters, Akira, lululemon, and the recently opened boutique hotel, The Robey.

POPULATION DENSITY	19,372	½ Mile
	73,104	1 Mile
	232,345	2 Mile
DAYTIME EMPLOYMENT	5,377	½ Mile
	20,324	1 Mile
	78,195	2 Mile
AVERAGE HH INCOME	\$104,381	½ Mile
	\$93,856	1 Mile
	\$92,905	2 Mile



RETAIL SPACE AVAILABLE
2325 W. NORTH AVENUE
 Bucktown | Chicago, IL



CONTACT
ANTHONY CAMPAGNI
 ac@arcgrp.com
 (630) 908-5695

LAUREN SZYMELL
 lszymell@arcgrp.com
 (630) 908-5703

© 2020 ARC Real Estate. All information is from sources believed reliable, not independently verified, and thus subject to errors, omissions, and modifications such as price, listing, square footage, rates and commissions. All information, estimates and projections subject to change, market assumptions, unknown facts and conditions, and future potentialities. ARC Real Estate makes no express or implied representations or warranties, as facts and results may vary materially from all information, estimates and projections. All renderings presented are conceptual.

