

124

Rivington Street

BETWEEN NORFOLK AND ESSEX STREETS

GROUND FLOOR:

APPROXIMATELY 3,100 SF

MEZZANINE:

APPROXIMATELY 1,200 SF

CEILING HEIGHT:

17 FEET

FRONTAGE:

APPROXIMATELY 20 FEET

POSSESSION:

NOVEMBER 2017

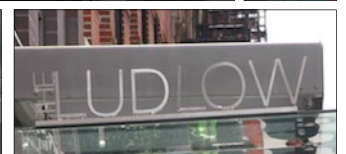
ASKING RENT:

UPON REQUEST



COMMENTS:

- Exquisite Lower East Side restaurant opportunity
- HVAC currently existing
- One block from Essex Crossing Project with 1.8 million square feet of mixed residential, commercial and retail being developed
- Surrounded by Essex Market (30,000 sf), Regal Cinemas (60,000 sf) and Smorgasburg (90,000 sf)
- Join some of the Lower East Side's most sought after eateries such as Katz's Deli, Clinton Street Bakery, Dirty French, Schillers, Russ and Daughters and Beauty and Essex



EXCLUSIVE AGENT: **ROSS L. KAPLAN** 212.850.5418 RKAPLAN@NGKF.COM

DEREK KOELSCH 212.372.0740 DEREK.KOELSCH@NGKF.COM

**Newmark Grubb
Knight Frank**
Retail

www.ngkf.com/retail



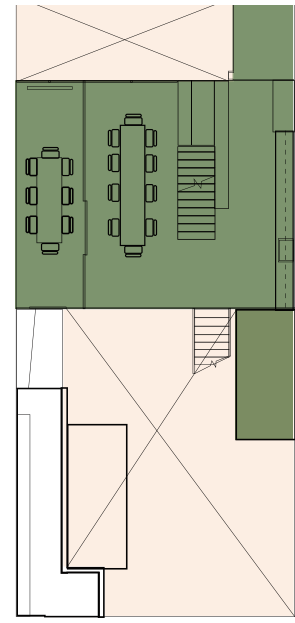
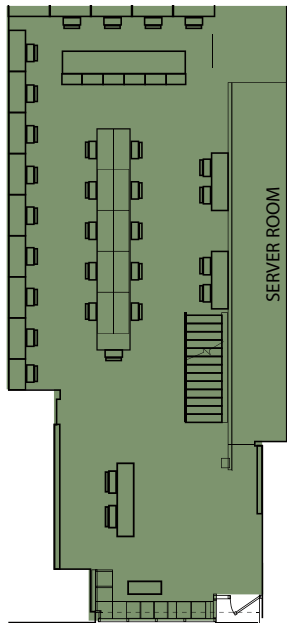
The information contained herein has been obtained from sources deemed reliable but has not been verified and no guarantee, warranty or representation, either express or implied, is made with respect to such information. Terms of sale or lease and availability are subject to change or withdrawal without notice.

124

Rivington Street
BETWEEN NORFOLK AND ESSEX STREETS

KEY

- DINING
- HOTELS
- RETAIL



RIVINGTON ST



EXCLUSIVE AGENT: **ROSS L. KAPLAN** 212.850.5418 RKAPLAN@NGKF.COM **DEREK KOELSCH** 212.372.0740 DEREK.KOELSCH@NGKF.COM

Newmark Grubb Knight Frank
Retail

www.ngkf.com/retail

The information contained herein has been obtained from sources deemed reliable but has not been verified and no guarantee, warranty or representation, either express or implied, is made with respect to such information. Terms of sale or lease and availability are subject to change or withdrawal without notice.