

Baldwin East

Medical/Professional Office

1,221 RSF Available



Property Highlights

- 1300 North Semoran Blvd. Suite 120, Orlando, FL 32807
- Semoran Boulevard Monument Signage Available (Approx. 50,000 cars per day)
- Ample Parking Available
- Excellent Access, adjacent to SR 408, SR 417 and SR 50.
- Close proximity to Orlando International Airport and Downtown Orlando
- Full Service Lease, Janitorial Included
- Professionally Managed
- Onsite Ownership

For Information Contact:

Mike Fess, Faith Pamplin, or Emily Bower

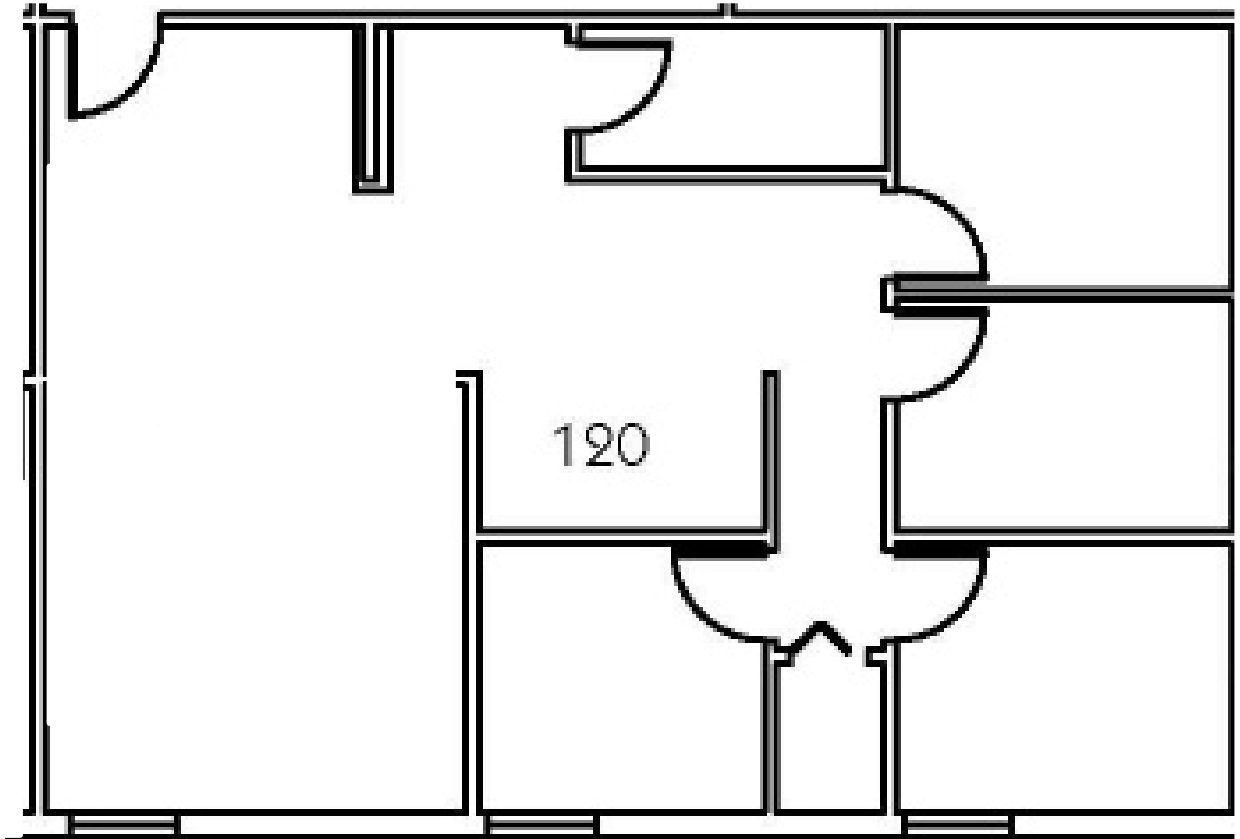
1300 N. Semoran Blvd – Suite 225, Orlando, FL 32807

Office: 407.660.4949 | Fax: 407.660.4995

mikefess@equitypartners.net, faithpamplin@equitypartners.net,
emilybower@equitypartners.net

Baldwin East Medical/Professional Office

1,221 RSF Available



1300 N Semoran Blvd. Suite 120

For Information Contact:
Mike Fess, Faith Pamplin, or Emily Bower
1300 N. Semoran Blvd – Suite 225, Orlando, FL 32807
Office: 407.660.4949 | Fax: 407.660.4995
mikefess@equitypartners.net, faithpamplin@equitypartners.net,
emilybower@equitypartners.net