

FOR
LEASE

5734 SOUTH PRINCE STREET

LITTLETON, COLORADO 80120

Located in
the heart of
downtown
Littleton



FEATURES

- :: Located in the heart of downtown Littleton
- :: 2 stories, 19,055 RSF
- :: Direct lease available 5,362 SF, Second Floor
- :: Parking - Approximately 54 surface parking spaces
- :: Easy access to S. Santa Fe Drive
- :: Nearby amenities include retail (restaurants, shops, etc.) and on-site banking and ATM
- :: Building located 1/2 block from light rail station
- :: Rate: \$27.00/psf FSG
- :: Furniture Negotiable

FOR MORE
INFORMATION
PLEASE
CONTACT

Brian Wells
Senior Vice President
+1 303 628 1706
brian.wells@cbre.com

Jacqueline Bond
Client Services Specialist
+1 303 628 7413
jackie.bond@cbre.com

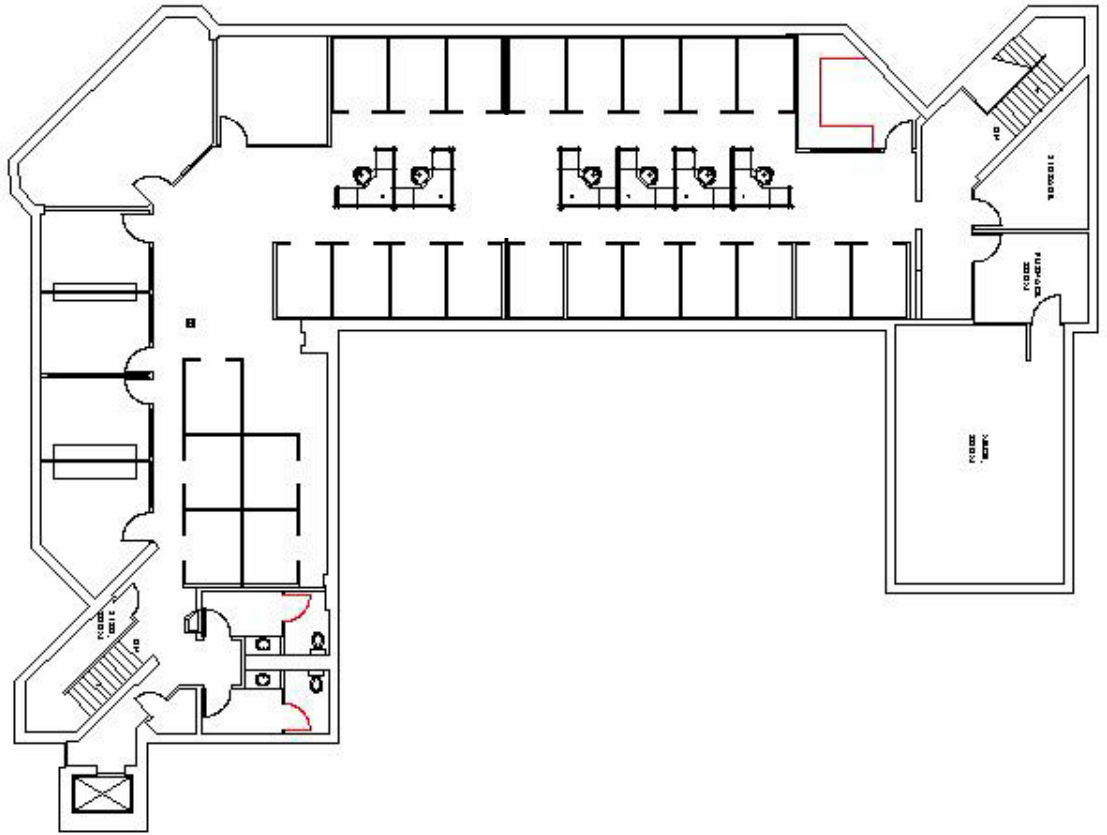
CBRE

FOR
LEASE

5734 SOUTH PRINCE STREET

LITTLETON, COLORADO 80120

UP TO
5,362 SF
AVAILABLE



FOR MORE
INFORMATION
PLEASE
CONTACT

Brian Wells

Senior Vice President

+1 303 628 1706

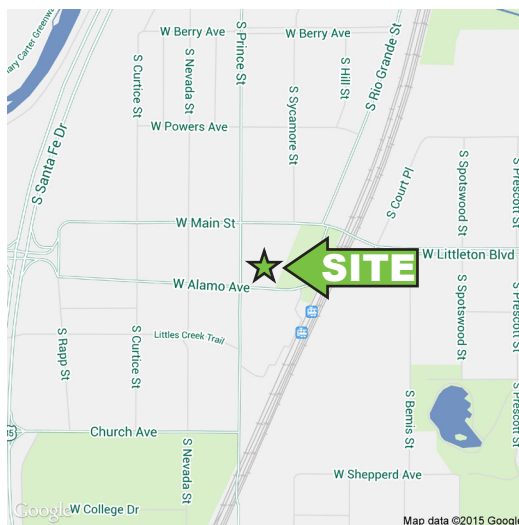
brian.wells@cbre.com

Jacqueline Bond

Client Services Specialist

+1 303 628 7413

jackie.bond@cbre.com



CBRE | 8390 E. Crescent Parkway, Suite 300 | Greenwood Village, CO 80111 | www.cbre.com/Denver

© 2015 CBRE, Inc. This information has been obtained from sources believed reliable. We have not verified it and make no guarantee, warranty or representation about it. Any projections, opinions, assumptions or estimates used are for example only and do not represent the current or future performance of the property. You and your advisors should conduct a careful, independent investigation of the property to determine to your satisfaction the suitability of the property for your needs. All marks displayed on this document are the property of their respective owners. Photos herein are the property of their respective owners and use of these images without the express written content of the owner is prohibited. REVISED: 04/07/15

CBRE