

FOR LEASE

3760 E 15th Street, Ste 201
Loveland, CO

OFFICE FOR LEASE

PROPERTY TYPE
OFFICE

AVAILABLE
2,014 SF

PRICE
\$18.50/SF NNN



FEATURES:

- Convenient I-25 access
- Monument sign on HWY 34
- Immediate proximity to Centerra's amenities
- Nice finishes with lots of natural light

REALTEC

COMMERCIAL REAL ESTATE SERVICES

Patrick O'Donnell

970.231.5576

patricko@realtec.com

Bruce Campbell

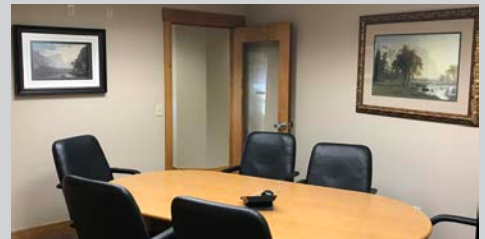
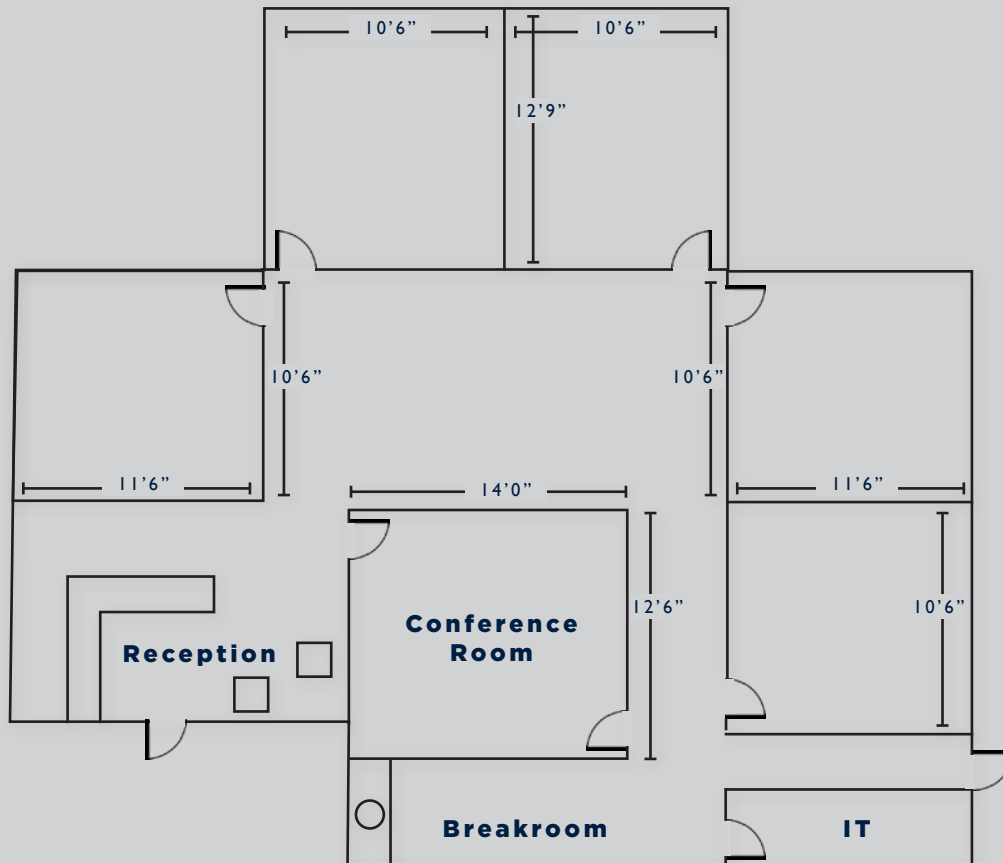
970.231.6824

bruce@realtec.com

VIEW MORE REALTEC LISTINGS AT WWW.REALTEC.COM

FOR LEASE

3760 E 15th Street, Ste 201
Loveland, CO



Fort Collins

400 E. Horsetooth Road, Suite 200
Fort Collins, CO 80525
970.229.9900

Loveland

200 E. 7th Street, Suite 418
Loveland, CO 80537
970.593.9900

Greeley

1711 61st Avenue, Suite 104
Greeley, CO 80634
970.346.9900

REALTEC
COMMERCIAL REAL ESTATE SERVICES