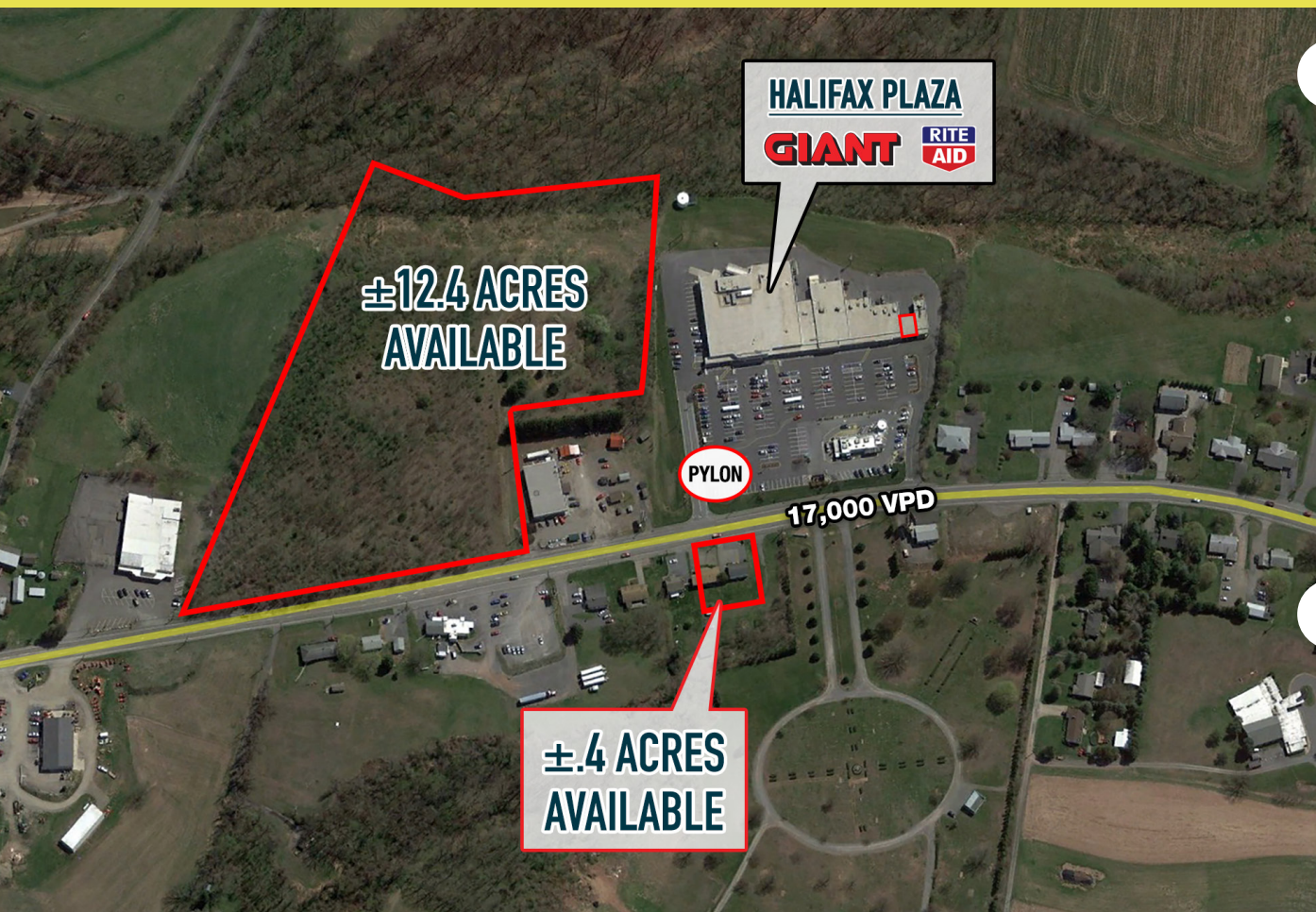


HALIFAX PLAZA

3761-3777 PETERS MTN. RD. (RTE 225)

HALIFAX, PA

GROUND FOR LEASE & DRIVE THRU ATM



property highlights.

- Grocery anchored shopping center just south of Halifax
- Three separate parcels available for lease
- ±5.1 acres at a lighted intersection
- Traffic Count: 17,000 VPD
- GLA: ±51,510 SF
- Owned & managed by: 



stats.

2016 DEMOGRAPHICS*	5 MILES	7 MILES	10 MILES
EST. POPULATION	8,860	22,692	55,896
EST. HOUSEHOLDS	3,567	9,288	23,108
EST. AVG. HH INCOME	\$70,247	\$69,441	\$80,504

*ESRI 2016



METRO[®]
COMMERCIAL
REAL ESTATE, INC.

MetroCommercial.com | PHILADELPHIA, PA | PLYMOUTH MEETING, PA | MOUNT LAUREL, NJ | NAPLES, FL

get in touch.

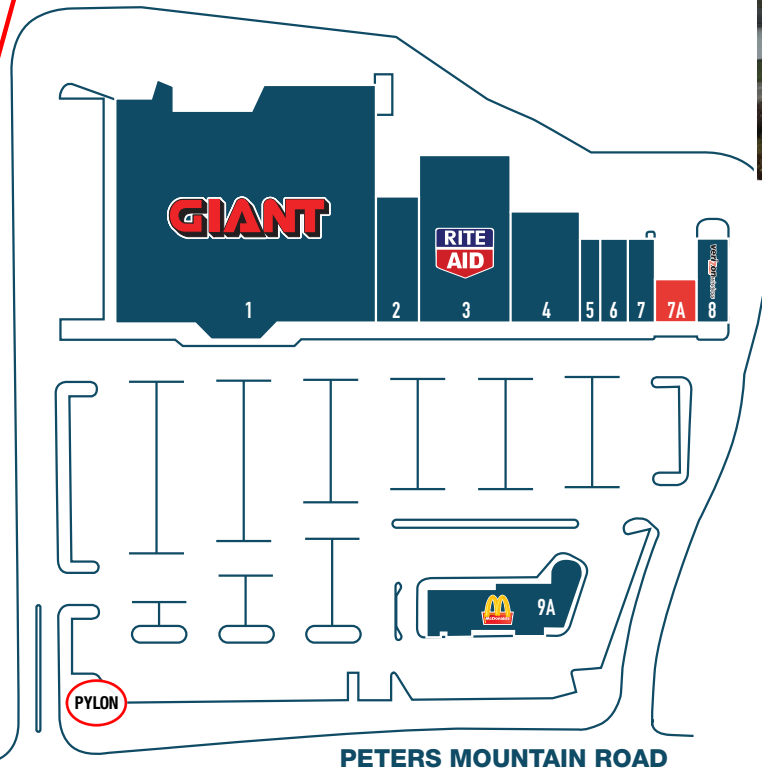
PAT GALLAGHER

office 610.825.5222
direct 610.260.2676
pgallagher@metrocommercial.com

JOE DOUGHERTY

office 610.825.5222
direct 610.260.2670
jdougherty@metrocommercial.com

±12.4 ACRES
AVAILABLE



±.4 ACRES
AVAILABLE



- 1 GIANT
- 2 PA WINE AND SPIRITS STORE
- 3 RITE AID
- 4 DRAYER PHYSICAL THERAPY
- 5 MARUTI CIGAR SMOKE SHOP
- 6 SUBWAY
- 7 GREAT WALL RESTAURANT
- 7A MID PENN BANK ATM
- 8 VERIZON WIRELESS
- 9A MCDONALDS

The information and images contained herein are from sources deemed reliable. However, Metro Commercial Real Estate, Inc. makes no representation whatsoever as to their accuracy or authenticity. Images shown may be modified for illustrative purposes. Images may be out-of-date and not current. 11.28.17

3761-3777 PETERS MTN. RD. (RTE 225)
HALIFAX, PA





The information and images contained herein are from sources deemed reliable. However, Metro Commercial Real Estate, Inc. makes no representation whatsoever as to their accuracy or authenticity. Images shown may be modified for illustrative purposes. Images may be out-of-date and not current. 11.28.17

3761-3777 PETERS MTN. RD. (RTE 225)
HALIFAX, PA

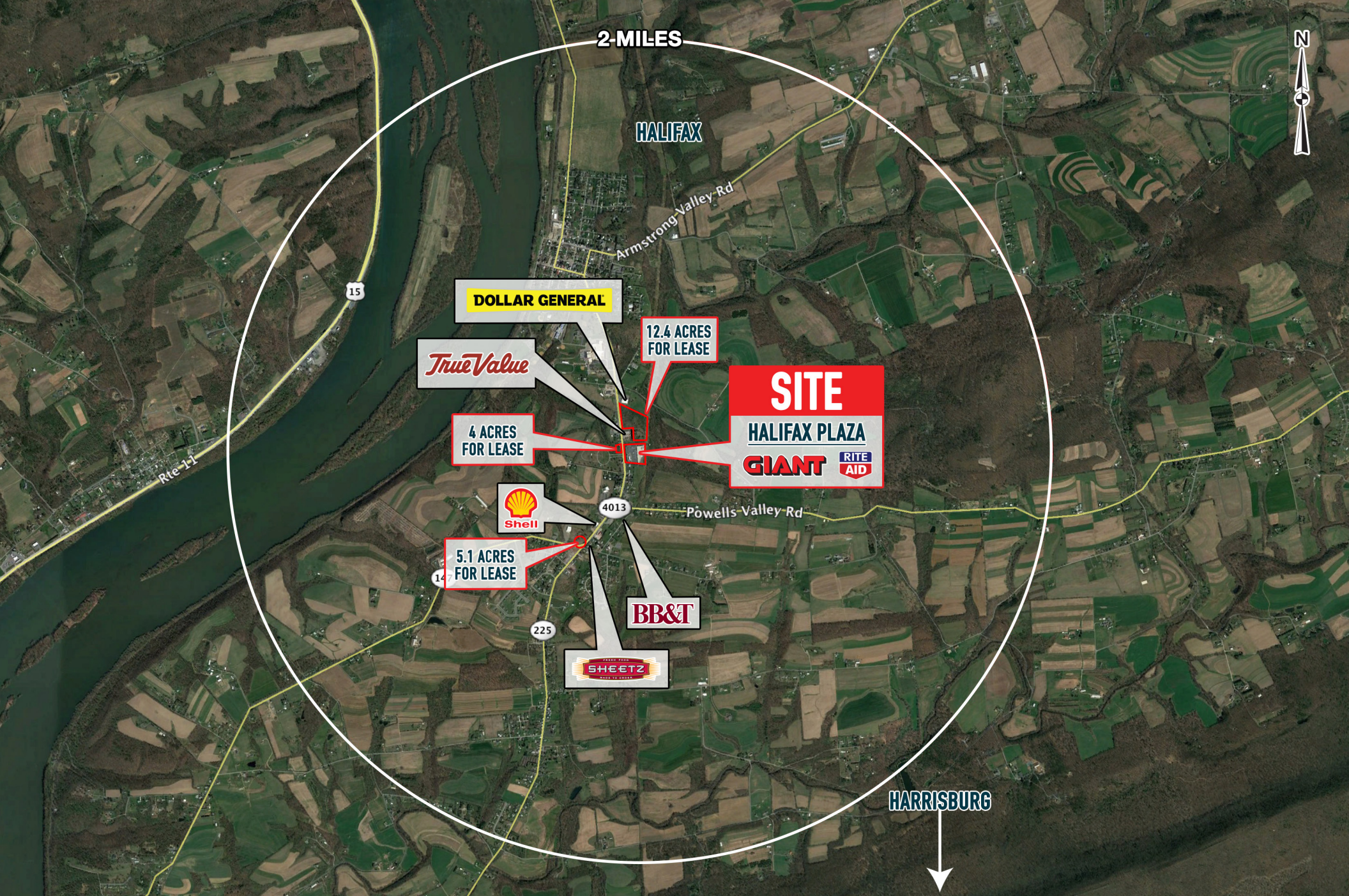




The information and images contained herein are from sources deemed reliable. However, Metro Commercial Real Estate, Inc. makes no representation whatsoever as to their accuracy or authenticity. Images shown may be modified for illustrative purposes. Images may be out-of-date and not current. 11.28.17

3761-3777 PETERS MTN. RD. (RTE 225)
HALIFAX, PA





The information and images contained herein are from sources deemed reliable. However, Metro Commercial Real Estate, Inc. makes no representation whatsoever as to their accuracy or authenticity. Images shown may be modified for illustrative purposes. Images may be out-of-date and not current. 11.28.17

3761-3777 PETERS MTN. RD. (RTE 225)
HALIFAX, PA