

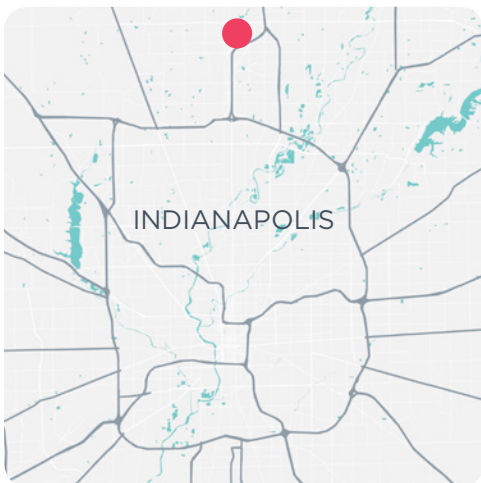
LEASE

OFFICE

MEDICAL



CARMEL NORTH MERIDIAN // 3,446 SF MEDICAL SUITE



SUITE #	SF	RATE
104	3,446	\$25.00/SF Modified Gross

- + Former long-term Endodontist office
- + High end finishes
- + Suite located on first floor off lobby (anchor tenant space)
- + Located across from St. Vincent Carmel Hospital on Meridian
- + Abundant parking - 5 spaces per 1,000 SF
- + Easy access
- + Panel on 136th St. pylon sign
- + Strong demographics in affluent Carmel

PaulDickTeam.com

PAUL DICK

Senior Vice President

☎ 317.663.6540

☎ 317.698.8055

paul.dick@rcre.com

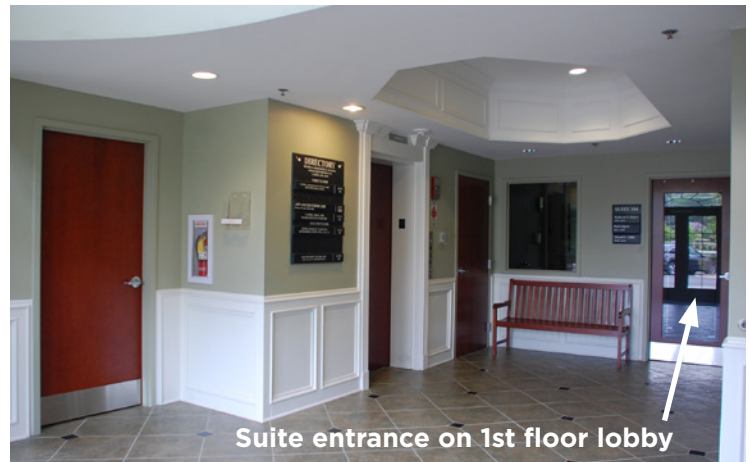
KEVIN DICK

Vice President

☎ 317.663.6544

☎ 317.213.6692

kevin.dick@rcre.com



DEMOGRAPHICS

	1 MILE	5 MILES	10 MILES
Population	11,999	148,946	470,470
Households	5,713	58,836	196,580
Average HH Income	\$105,369	\$131,377	\$111,776
Median Age	37	38	37



PAUL DICK
Senior Vice President
 ☎ 317.663.6540
 ☎ 317.698.8055
 paul.dick@rcrc.com

KEVIN DICK
Vice President
 ☎ 317.663.6544
 ☎ 317.213.6692
 kevin.dick@rcrc.com



in #growIndiana

The information contained herein was obtained from sources we consider reliable. We cannot be responsible for errors, omissions, prior sale or lease, withdrawal from the market or change in price. Seller and broker make no representation as to the environmental condition of the property and recommend the lessee's/purchaser's independent investigation. Ver. 19.01.14-1507

9339 Priority Way West Drive
Suite 120
Indianapolis, IN 46240
317.663.6000