

Riverside Downs Office Space for Lease

2630 W. Belleview, Littleton CO 80123 Only 2 Office Spaces Left!

Available: Suite 290: 653/RSF
Suite 200: 2,949/RSF

Price: \$24.00/RSF
(Base Rent: \$11.00/RSF)
(NNN: \$13.00/RSF)

Parking: 5/1000

Total Size: 19,079/RSF



- Excellent location and exposure
- End cap—three sides of glass
- Great professional tenant mix
- Looks over picnic area on the Platte River
- Right next to the biking/walking trail
- Modern open ceiling interior
- Fantastic Mountain Views
- Continuous traffic day and night
- Everything you need within walking distance



OFFICE SPACE FOR LEASE



SHELDON • GOLD REALTY INC.
commercial real estate services

Mary Jo Cummings
720.220.6000

mcummings@sg-realty.com

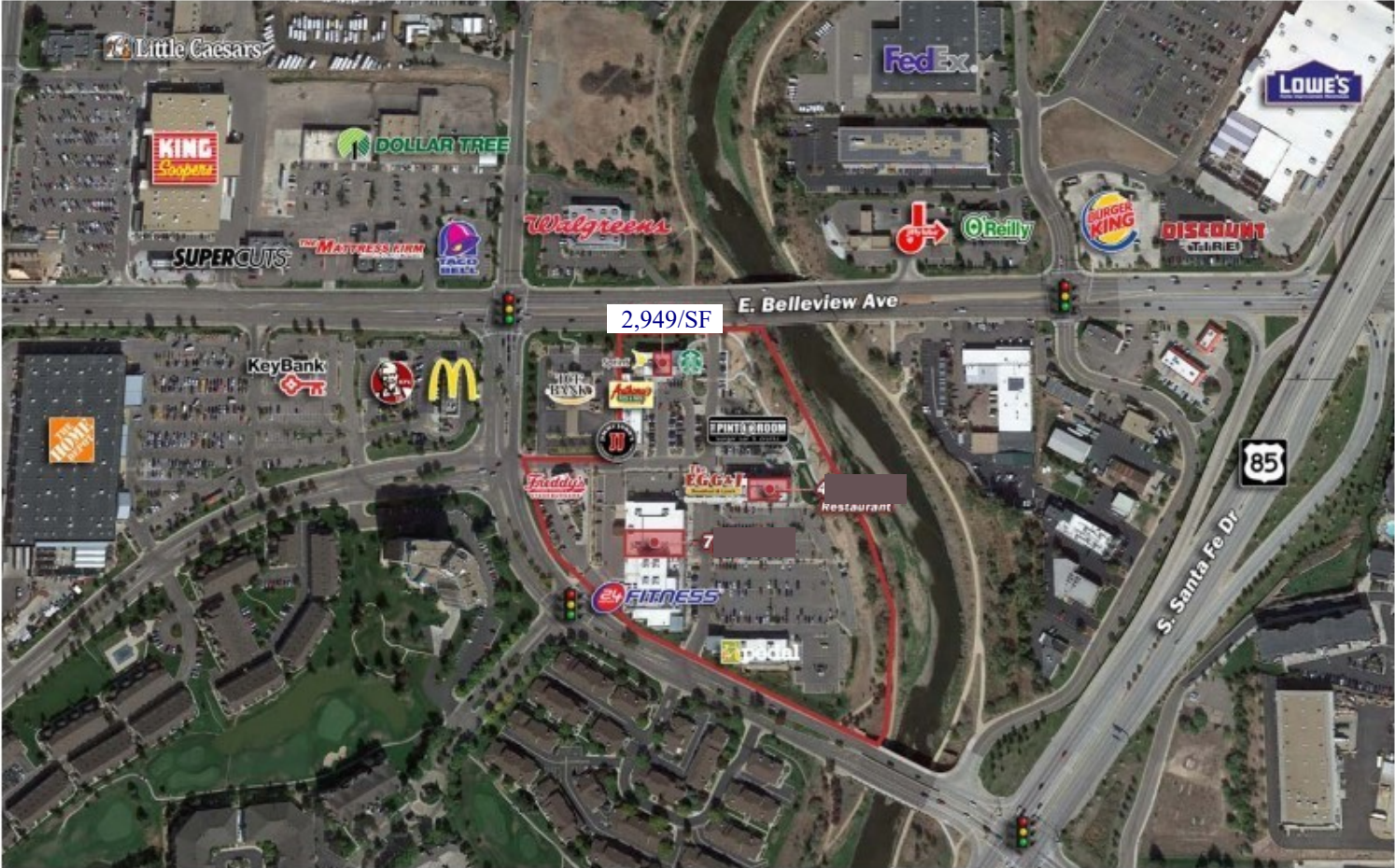
9025 East Kenyon Avenue, Suite 100 Denver, CO 80237, www.sg-realty.com 303.741.2500

THE INFORMATION CONTAINED HEREIN, WHILE NOT GUARANTEED, IS FROM SOURCES WE BELIEVE RELIABLE. PRICE, TERMS AND INFORMATION ARE SUBJECT TO CHANGE. SHELDON • GOLD REALTY INC. AND ITS BROKER ASSOCIATES, ARE OR WILL BE ACTING AS AGENTS OF THE SELLER/LESSOR WITH THE DUTY TO REPRESENT THE INTERESTS OF THE SELLER/LESSOR. SHELDON • GOLD REALTY INC. WILL NOT ACT AS YOUR AGENT UNLESS AN AGENCY AGREEMENT IS SIGNED AND IN EFFECT.

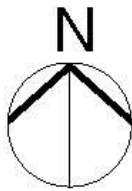
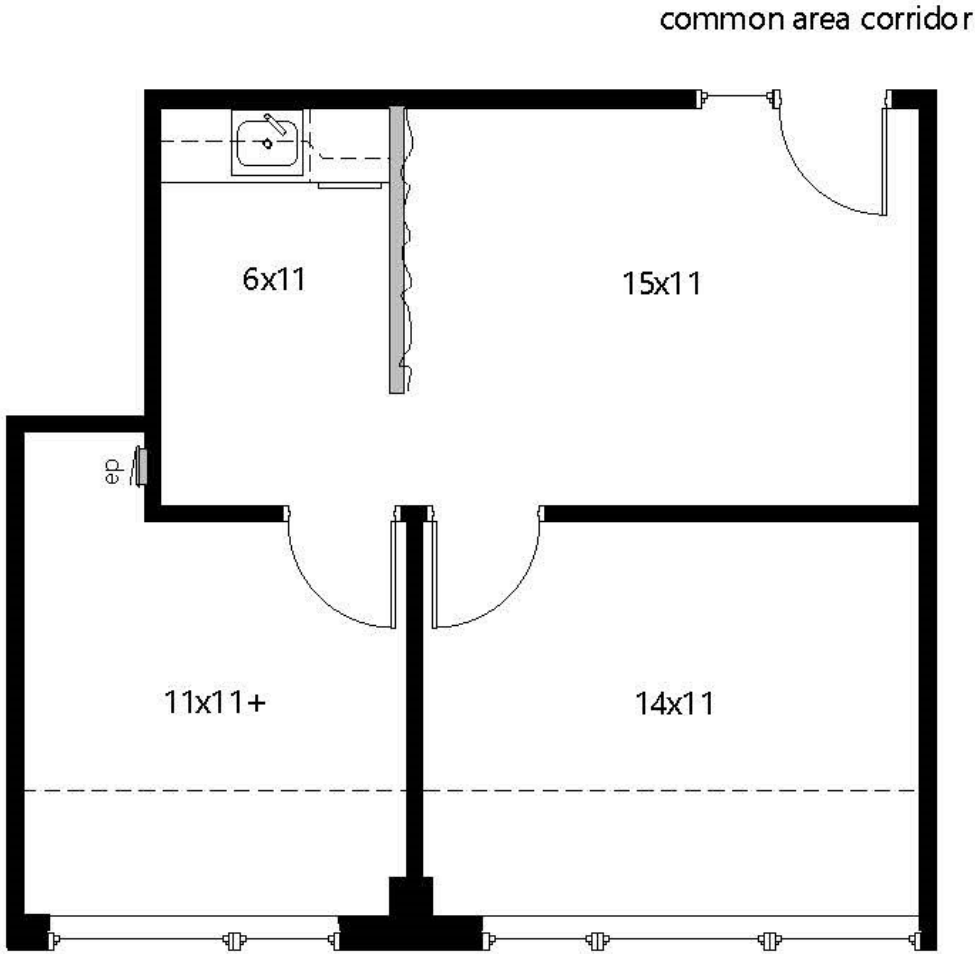


Riverside Downs Office Space for Lease

2630 W. Belleview, Littleton CO 80123



Riverside Downs Office Space for Lease
2630 W. Belleview, Littleton CO 80123



2630 West Belleview Avenue, Suite 290

approx. 653 rsf

Riverside Downs Office Space for Lease
2630 W. Belleview, Littleton CO 80123



2630 West Belleview Avenue, Suite 200
approx. 2,949/RSF