

1540 1555 1565

RIVER PARK DRIVE  
SACRAMENTO, CA

## PROPERTY HIGHLIGHTS

- Completely renovated and revitalized office park
- Excellent Proximity to numerous retail & dining amenities
- Great access to Business 80 & Highway 160
- On-site Café
- Conference facilities
- 4.00/1,000 SF Parking Ratio

### Spencer Nielsen

Senior Associate  
+1 916 288 4531  
spencer.nielsen@cushwake.com  
CA LIC #01964163

### Kevin Partington

Executive Director  
+1 916 288 4807  
kevin.partington@cushwake.com  
CA LIC #01199010

### Sean Mullen

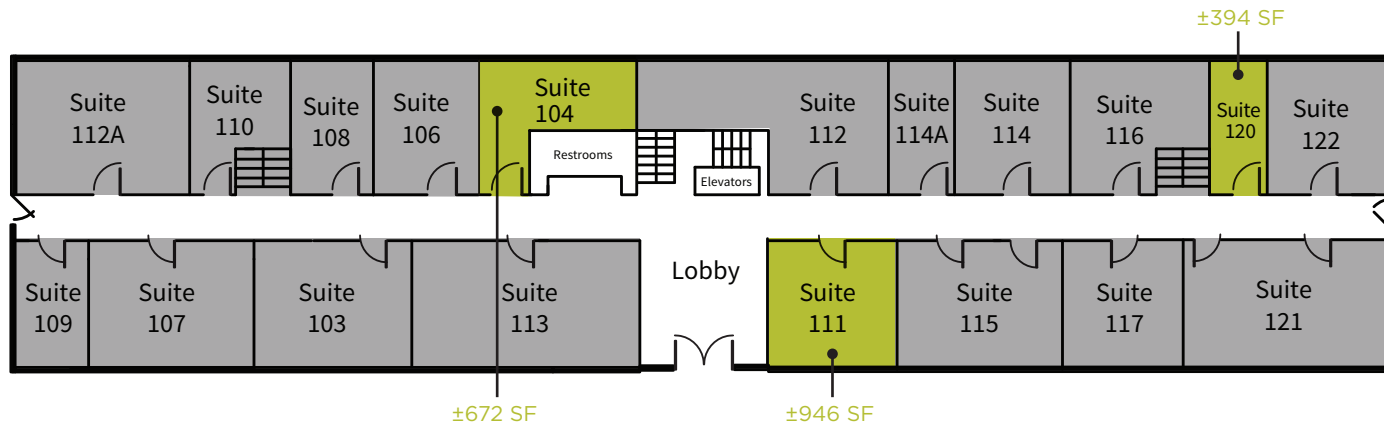
Senior Director  
+1 916 288 4811  
sean.mullen@cushwake.com  
CA LIC #01845406



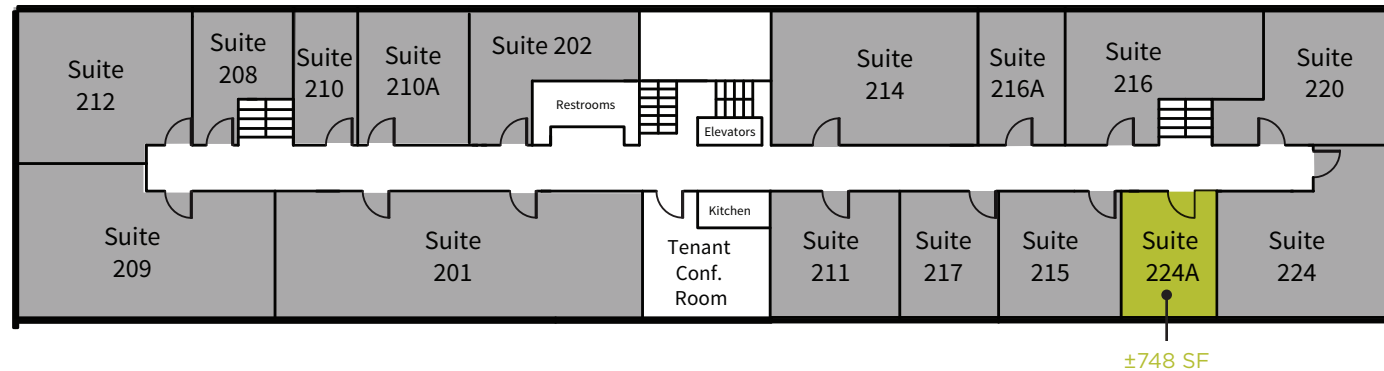
CUSHMAN &  
WAKEFIELD

1540 RIVER PARK DRIVE

1ST FLOOR



2ND FLOOR



■ AVAILABLE FOR LEASE    ■ LEASED

**SPENCER NIELSEN**

Senior Associate  
 +1 916 288 4531  
 spencer.nielsen@cushwake.com  
 CA LIC #01964163

**KEVIN PARTINGTON**

Executive Director  
 +1 916 288 4807  
 kevin.partington@cushwake.com  
 CA LIC #01199010

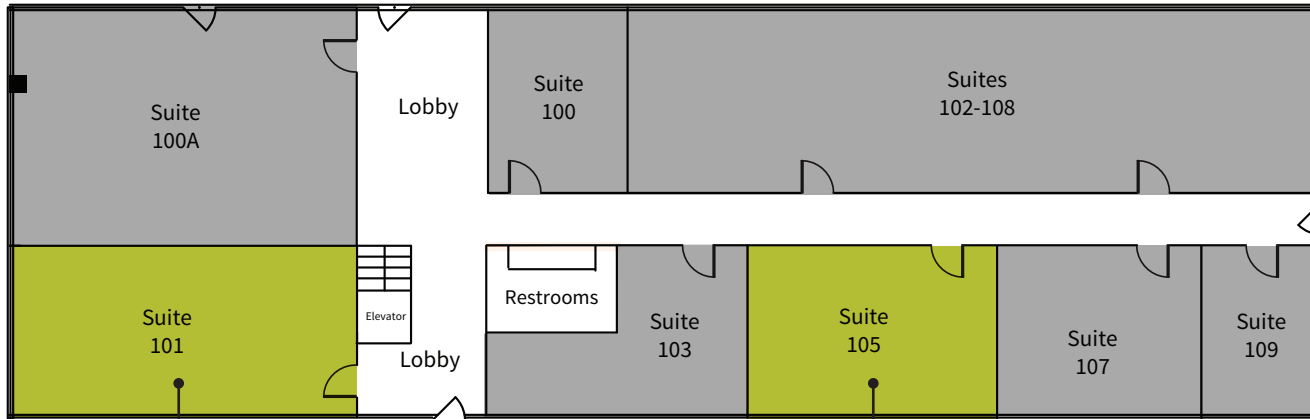
**SEAN MULLEN**

Senior Director  
 +1 916 288 4811  
 sean.mullen@cushwake.com  
 CA LIC #01845406



1555 RIVER PARK DRIVE

1ST FLOOR



±2,191 SF

±1,123 SF

±178 SF

±249 SF

±1,192 SF

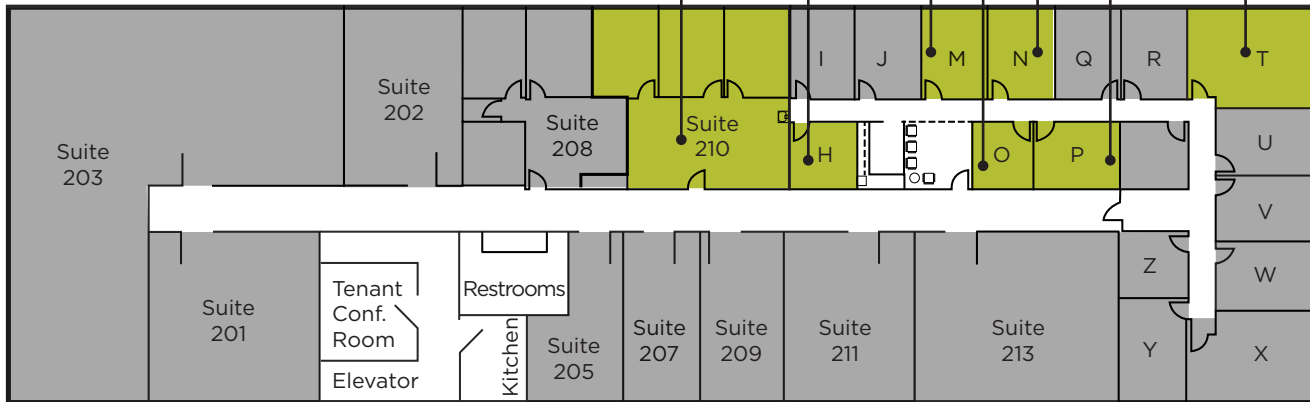
±178 SF

±211 SF

±211 SF

±492 SF

2ND FLOOR



■ AVAILABLE FOR LEASE ■ LEASED

**SPENCER NIELSEN**

Senior Associate  
+1 916 288 4531  
spencer.nielsen@cushwake.com  
CA LIC #01964163

**KEVIN PARTINGTON**

Executive Director  
+1 916 288 4807  
kevin.partington@cushwake.com  
CA LIC #01199010

**SEAN MULLEN**

Senior Director  
+1 916 288 4811  
sean.mullen@cushwake.com  
CA LIC #01845406



## PROPERTY PHOTOS



### SPENCER NIELSEN

Senior Associate  
+1 916 288 4531  
spencer.nielsen@cushwake.com  
CA LIC #01964163

### KEVIN PARTINGTON

Executive Director  
+1 916 288 4807  
kevin.partington@cushwake.com  
CA LIC #01199010

### SEAN MULLEN

Senior Director  
+1 916 288 4811  
sean.mullen@cushwake.com  
CA LIC #01845406





**SPENCER NIELSEN**

Senior Associate  
+1 916 288 4531  
spencer.nielsen@cushwake.com  
CA LIC #01964163

**KEVIN PARTINGTON**

Executive Director  
+1 916 288 4807  
kevin.partington@cushwake.com  
CA LIC #01199010

**SEAN MULLEN**

Senior Director  
+1 916 288 4811  
sean.mullen@cushwake.com  
CA LIC #01845406



**SPENCER NIELSEN | SENIOR ASSOCIATE**

+1 916 288 4531

spencer.nielsen@cushwake.com

CA LIC #01964163

**KEVIN PARTINGTON | EXECUTIVE DIRECTOR**

+1 916 288 4807

kevin.partington@cushwake.com

CA LIC #01199010

**SEAN MULLEN | SENIOR DIRECTOR**

+1 916 288 4811

sean.mullen@cushwake.com

CA LIC #01845406

400 Capitol Mall, Suite 1800

Sacramento, CA 95814

+1 916 288 4800

**cushmanwakefield.com**

[View Site Specific COVID-19 Prevention Plan](#)

©2020 Cushman & Wakefield. All rights reserved. The information contained in this communication is strictly confidential. This information has been obtained from sources believed to be reliable but has not been verified. No warranty or representation, express or implied, is made as to the condition of the property (or properties) referenced herein or as to the accuracy or completeness of the information contained herein, and same is submitted subject to errors, omissions, change of price, rental or other conditions, withdrawal without notice, and to any special listing conditions imposed by the property owner(s). any projections, opinions or estimates are subject to uncertainty and do not signify current or future property performance.

