



# COLONY INDUSTRIAL

## Air Center Business Park

1704 Rankin Road, Ste. 100  
Houston, TX 77073

**9,060 - 18,660 Square Feet of Industrial Space**

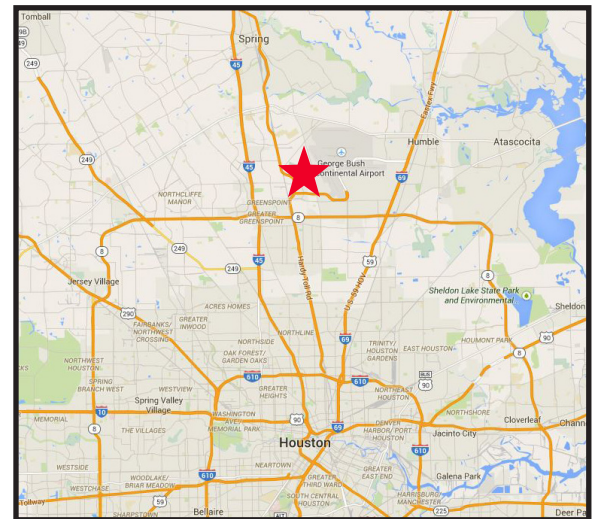


### LOCATION:

- Located in Central Green Industrial Park at the corner of Air Center Blvd and Rankin Road
- Easy Access to I-45, Beltway 8 and Hardy Toll Road
- Harris County
- End cap space with multi-row parking

### FACILITY:

- 18,660 SF Available
- 4,867 SF Office
- 24' Clear Height
- ESFR Sprinkler
- Fenced Truck Court
- Three (3) Dock High Doors with Levelers
- Four (4) Semi-Dock Doors
- One (1) 12' x 18' Oversize Ramp
- Divisible
- Available Immediately



### Cushman & Wakefield

Jason Dillee  
jason.dillee@cushwake.com

1330 Post Oak Blvd. Ste. 2700  
Houston, TX 77056  
office 713 345 1432  
cell 832 741 0733

### Cushman & Wakefield

Cape Bell  
cape.bell@cushwake.com

1330 Post Oak Blvd. Ste. 2700  
Houston, TX 77056  
office 713 331 1750  
cell 713 882 0899

### Colony Industrial

Ryan Soule  
rsoule@clns.com

13727 Noel Road, Suite 750  
Dallas, TX 75240  
office 972 893 7000



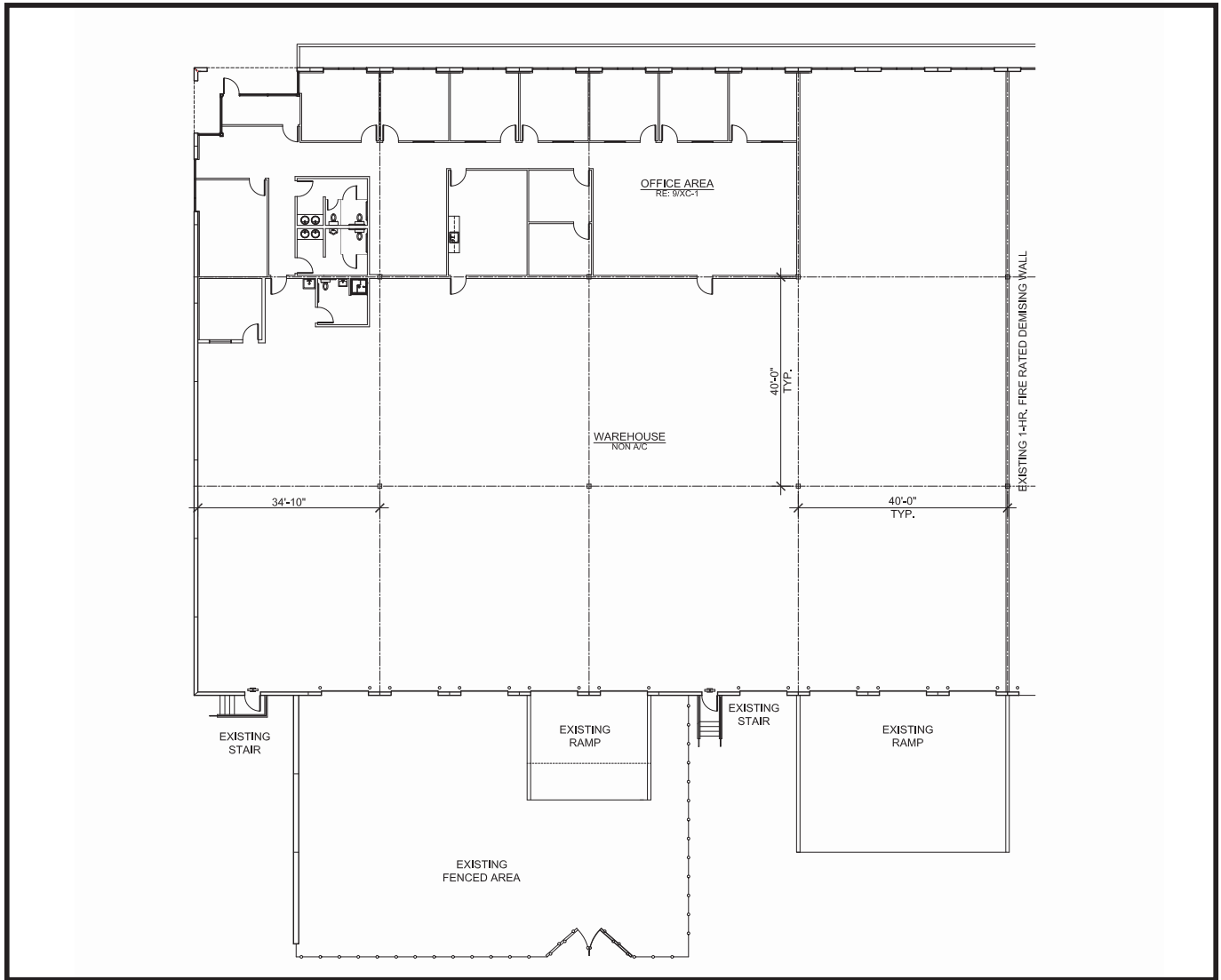


# COLONY INDUSTRIAL

## Air Center Business Park

1704 Rankin Road, Ste. 100  
Houston, TX 77073

9,060 - 18,660 Square Feet of Industrial Space



### Cushman & Wakefield

Jason Dillee  
jason.dillee@cushwake.com  
1330 Post Oak Blvd. Ste. 2700  
Houston, TX 77056  
office 713 345 1432  
cell 832 741 0733

### Cushman & Wakefield

Cape Bell  
cape.bell@cushwake.com  
1330 Post Oak Blvd. Ste. 2700  
Houston, TX 77056  
office 713 331 1750  
cell 713 882 0899

### Colony Industrial

Ryan Soule  
rsoule@clns.com  
13727 Noel Road, Suite 750  
Dallas, TX 75240  
office 972 893 7000

