

Medical Suite for LEASE

GROSSMONT MEDICAL TERRACE

8860 CENTER DRIVE, LA MESA, CA 91942

For leasing information:

Lael Crompton

Senior Director, Leasing

Phone: 858-794-1900

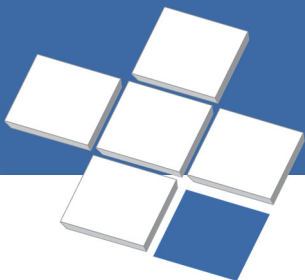
lcrompton@pmbres.com

www.pmbres.com

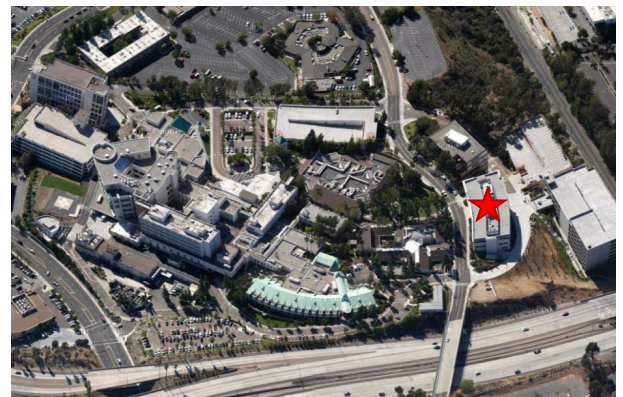
CA Lic. 01871298



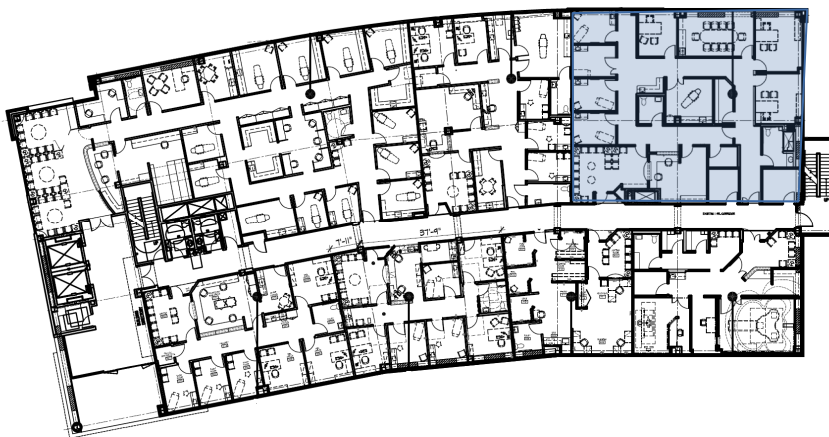
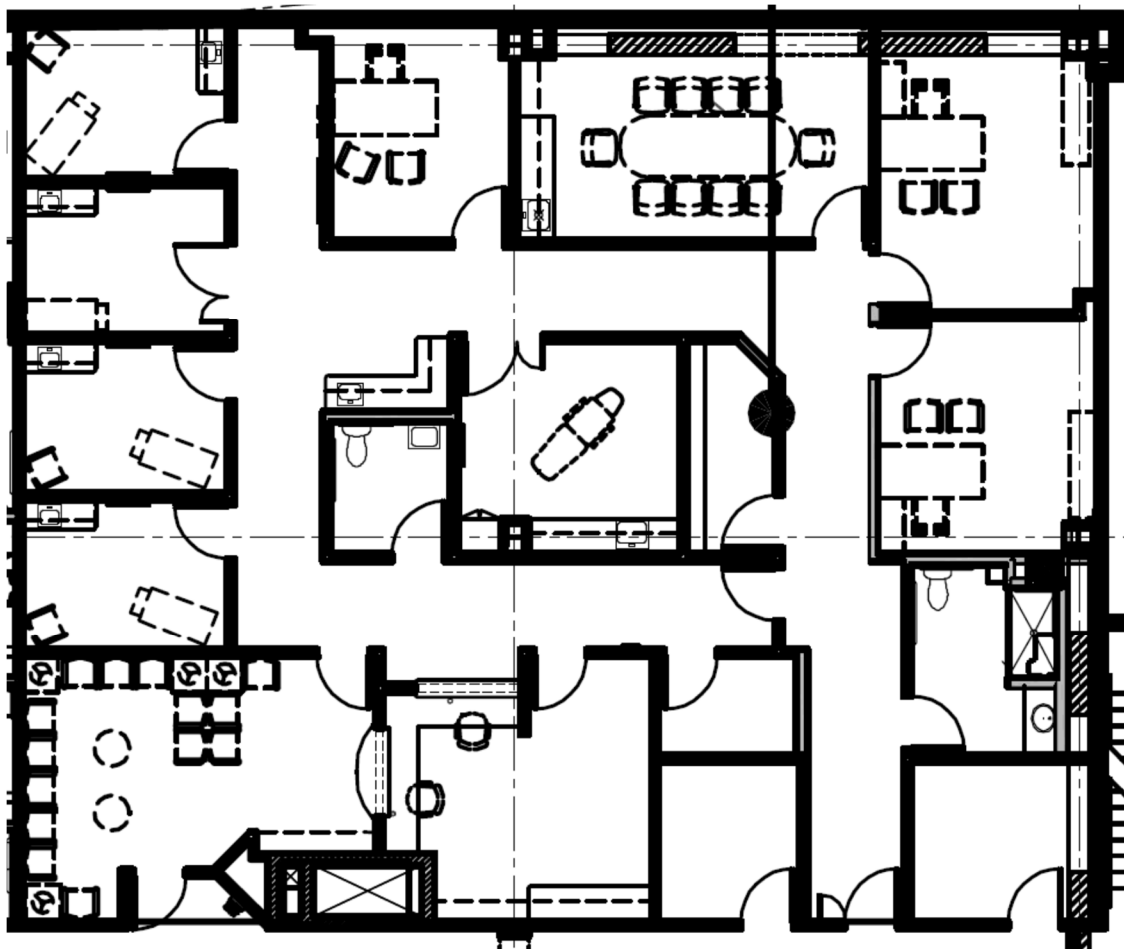
- Located on Sharp Grossmont Hospital Campus
- 65,000 SF, 4-story medical office building
- Custom designed suites
- 754-space parking structure
- State-of-the-art outpatient imaging center
- Two gurney size elevators
- Patient drop-off provides easy access for patients



PMB
Real Estate Services
Real Estate Management Solutions for Healthcare



Suite 350 - 3,343 RSF



PMB Real Estate Services
Real Estate Management Solutions for Healthcare

