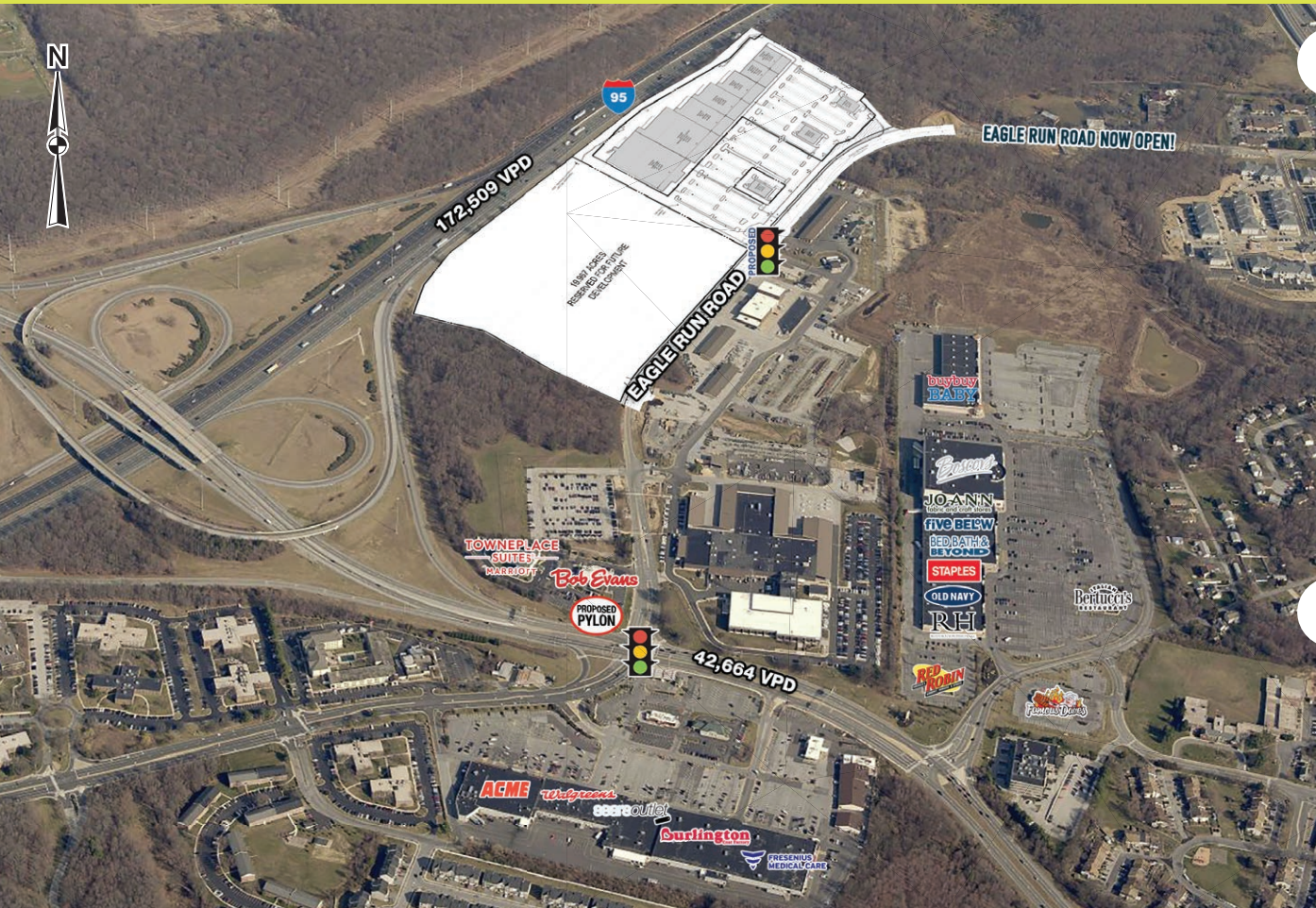


PROMENADE AT CHRISTIANA I-95 & ROUTE 273 CHRISTIANA, DE

ANCHOR, JUNIOR ANCHOR, INLINE SPACE & PAD SITES AVAILABLE FOR LEASE

**NEW
CONSTRUCTION!**



property highlights.

- New shopping center development located near Christiana Mall
- Strong visibility with over 1 mile of frontage along I-95
- No sales tax in Delaware!
- Area retailers include: Target, JCPenney, Boscov's, Staples, Old Navy, Nordstrom & Macy's
- Rear building signage along I-95 available
- Eagle Run Road Now Open!

stats.

2018 DEMOGRAPHICS*	3 MILES	5 MILES	7 MILES
EST. POPULATION	84,397	184,799	309,855
EST. HOUSEHOLDS	31,518	69,372	114,729
EST. AVG. HH INCOME	\$75,913	\$75,045	\$81,202

*ESRI 2018

LEASED BY:



METRO[®]
COMMERCIAL
REAL ESTATE, INC.

MetroCommercial.com | PHILADELPHIA, PA | PLYMOUTH MEETING, PA | MOUNT LAUREL, NJ | NAPLES, FL

OWNED & MANAGED BY:

KIMCO[™]
REALTY
more than shopping
EVERYDAY LIVING[™]

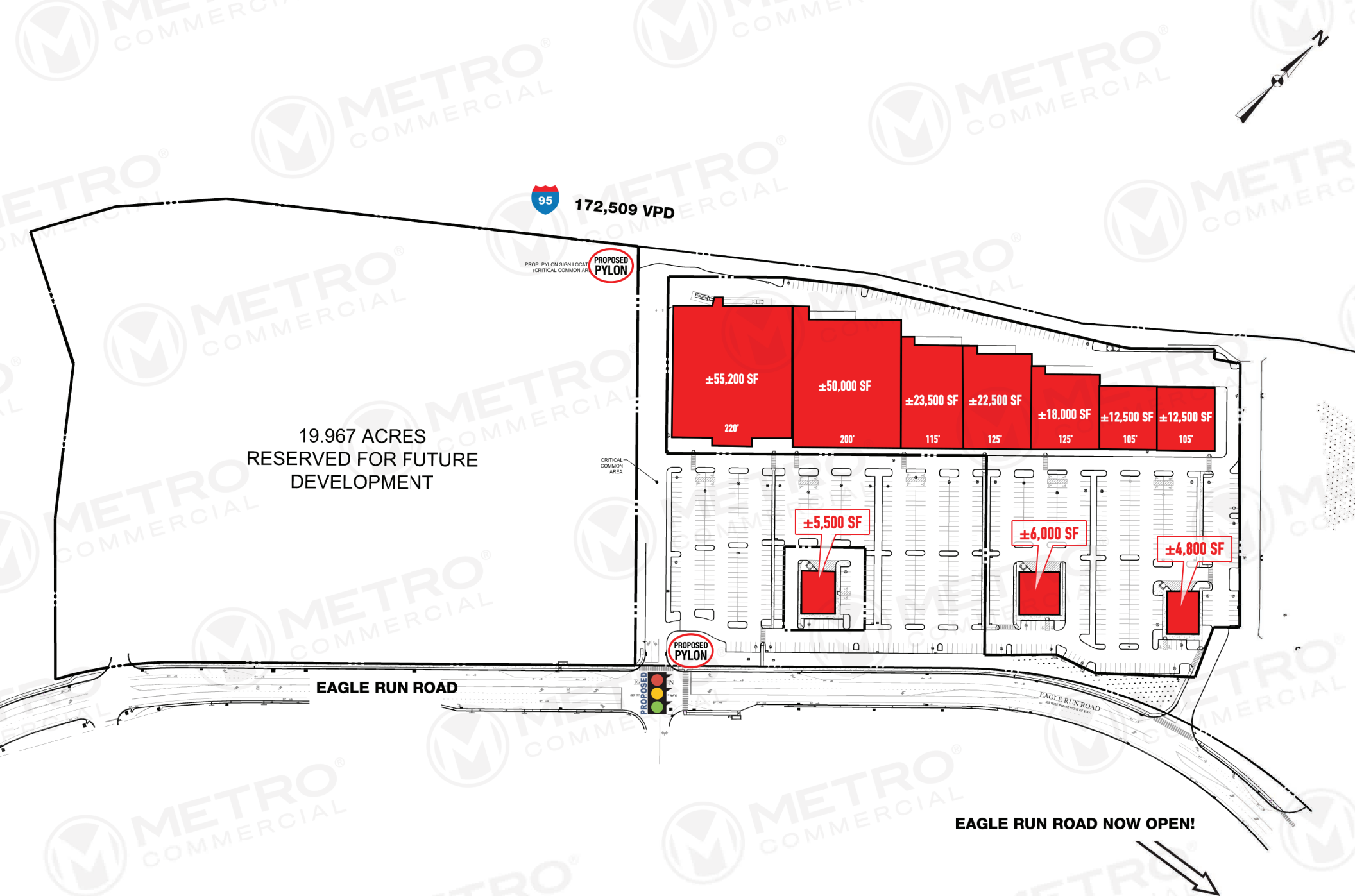
get in touch.

JOE DOUGHERTY

office 610.825.5222
direct 610.260.2670
jdougherty@metrocommercial.com

STEVE NIGGEMAN

office 610.825.5222
direct 610.260.2667
sniggeman@metrocommercial.com



The information and images contained herein are from sources deemed reliable. However, Metro Commercial Real Estate, Inc. makes no representation whatsoever as to their accuracy or authenticity. Images shown may be modified for illustrative purposes. Images may be out-of-date and not current. 4.11.19

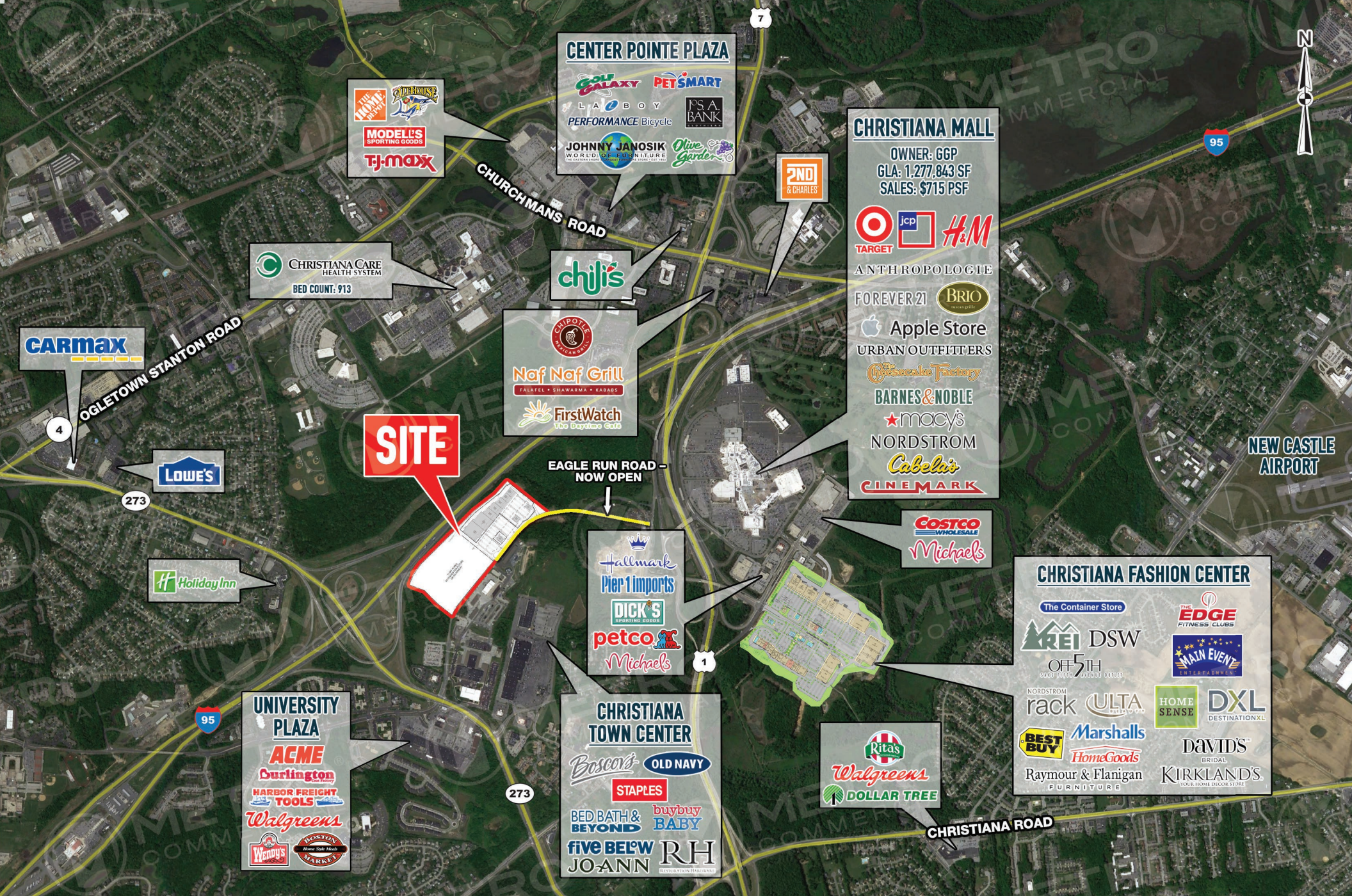
PROMENADE AT CHRISTIANA
CHRISTIANA, DE





The information and images contained herein are from sources deemed reliable. However, Metro Commercial Real Estate, Inc. makes no representation whatsoever as to their accuracy or authenticity. Images shown may be modified for illustrative purposes. Images may be out-of-date and not current. 4.11.19

PROMENADE AT CHRISTIANA CHRISTIANA, DE

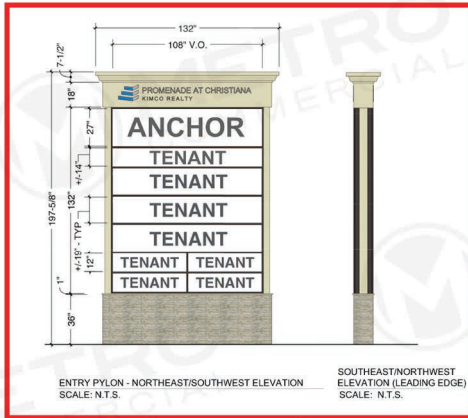


The information and images contained herein are from sources deemed reliable. However, Metro Commercial Real Estate, Inc. makes no representation whatsoever as to their accuracy or authenticity. Images shown may be modified for illustrative purposes. Images may be out-of-date and not current. 4.11.19

PROMENADE AT CHRISTIANA CHRISTIANA, DE



ROUTE 273 & EAGLE RUN ROAD PYLON



INTERSTATE I-95
PYLON SIGN

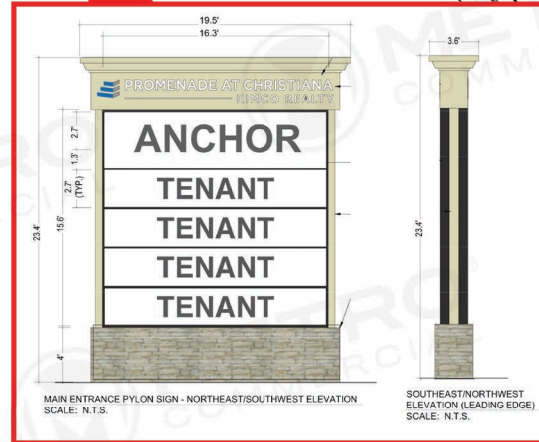
JOHN F. KENNEDY MEMORIAL HIGHWAY (I-95)

±20 ACRES
RESERVED FOR FUTURE
DEVELOPMENT

DIGITAL MONUMENT
SIGN
MAIN ENTRANCE
PYLON SIGN

RT 273

EAGLE RUN
ROAD
(BY FIRST PUBLIC RIGHT OF WAY)



MAIN ENTRANCE PYLON

I-95 PYLON

