

UNION
SQUARE

NEW YORK
NY

113 UNIVERSITY PLACE



SPACE DETAILS

LOCATION

Southeast corner of East 13th Street

APPROXIMATE SIZE

Ground Floor	4,378 SF
Lower Level	1,025 SF
Mezzanine	1,916 SF
Total	7,319 SF

POSSESSION

Immediate

TERM

Long term

FRONTAGE

50 FT on University Place

100 FT on East 13th Street

SITE STATUS

Vacant

NEIGHBORS

Sweetgreen, Nutella Cafe, Max Brenner, Blue Bottle Coffee, Regal Union Square, Zumiez, Bank of America, Chase Bank, The Grey Dog, Whole Foods Market, Sephora (coming soon)

COMMENTS

Flagship opportunity with tremendous visibility

Fully equipped restaurant

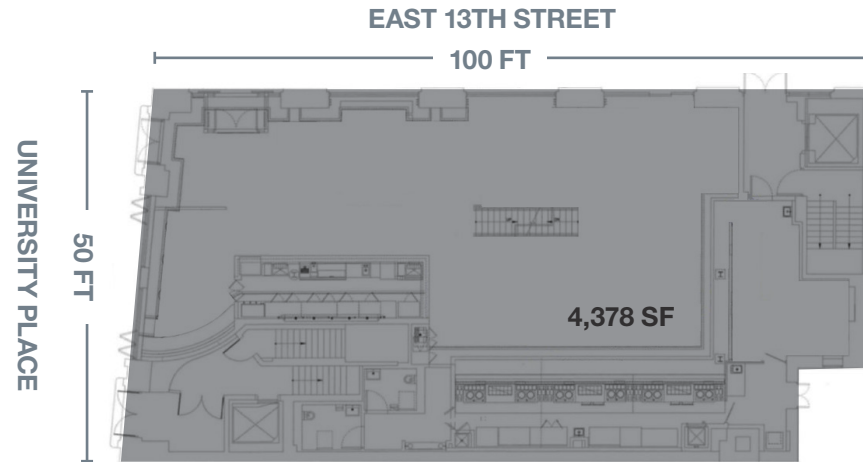
Black-iron venting in place

All equipment to remain in place

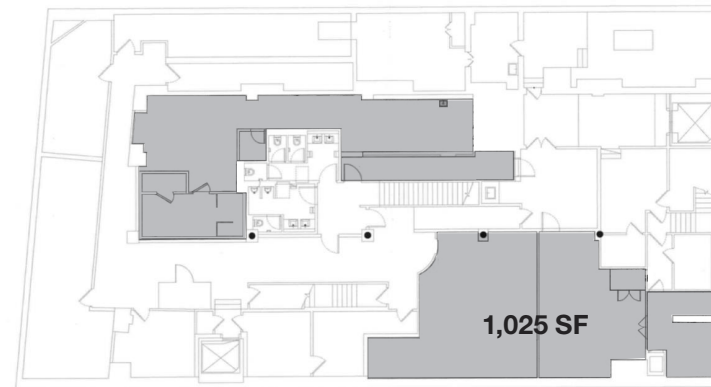
All uses considered

Over 100+ FT wraparound frontage

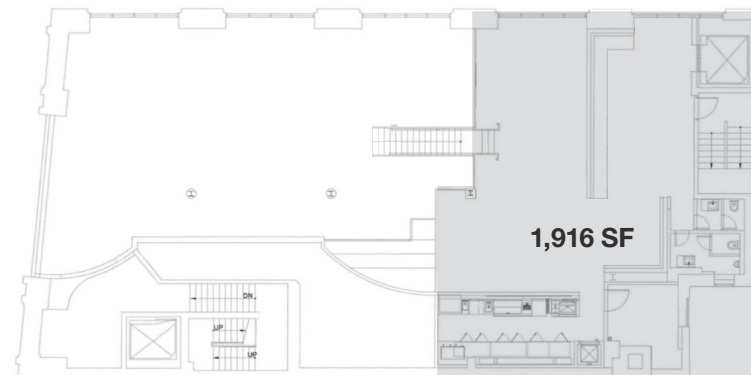
GROUND FLOOR



LOWER LEVEL



MEZZANINE



AREA RETAIL

CONTACT EXCLUSIVE AGENTS

344,000+ Visitors Daily

75,000 Residents
140,000 Employees
60,000 Students

Annual Ridership
35.3 Million



MICHAEL PASTER
212.351.9345
michael.paster@ngkf.com

ARIEL SCHUSTER
212.331.0132
ariel.schuster@ngkf.com

JESSE SMITH
215.840.3208
jesse.smith@ngkf.com

COMING SOON



NGKF.COM

© 2020 NEWMARK KNIGHT FRANK RETAIL. The information contained herein has been obtained from sources deemed reliable but has not been verified and no guarantee, warranty or representation, either express or implied, is made with respect to such information. Terms of sale or lease and availability are subject to change or withdrawal without notice.