

SALE

SPECIAL USE

16,751 SF BUILDING ON 1.68 ACRES



SALE PRICE

\$1,750,000 (\$104/SF)

BUILDING SF

16,751 SF

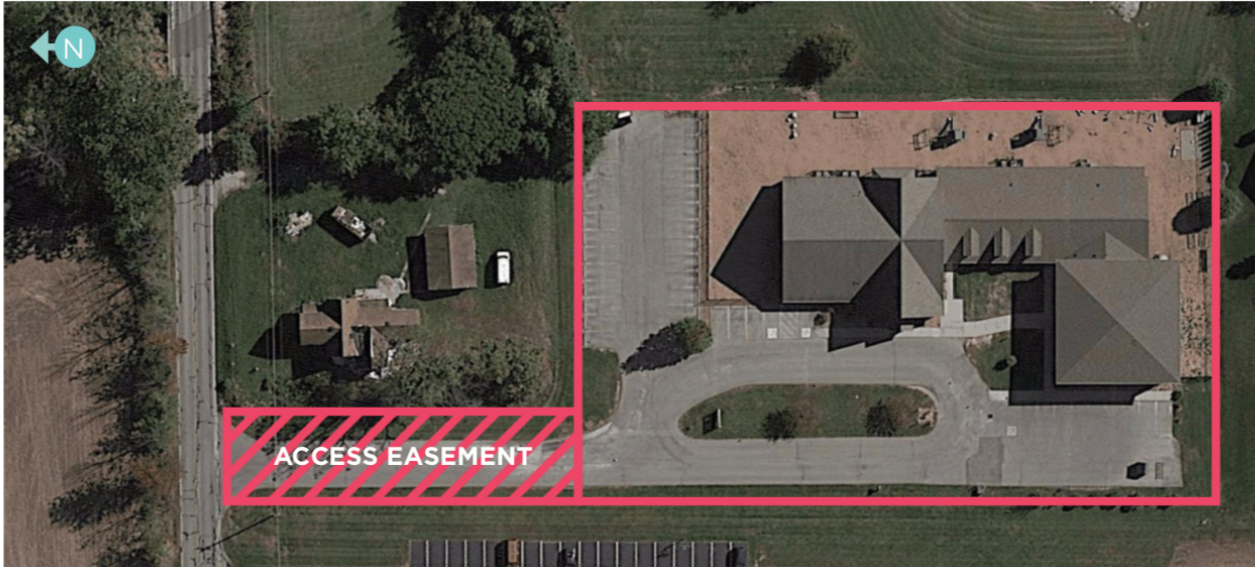
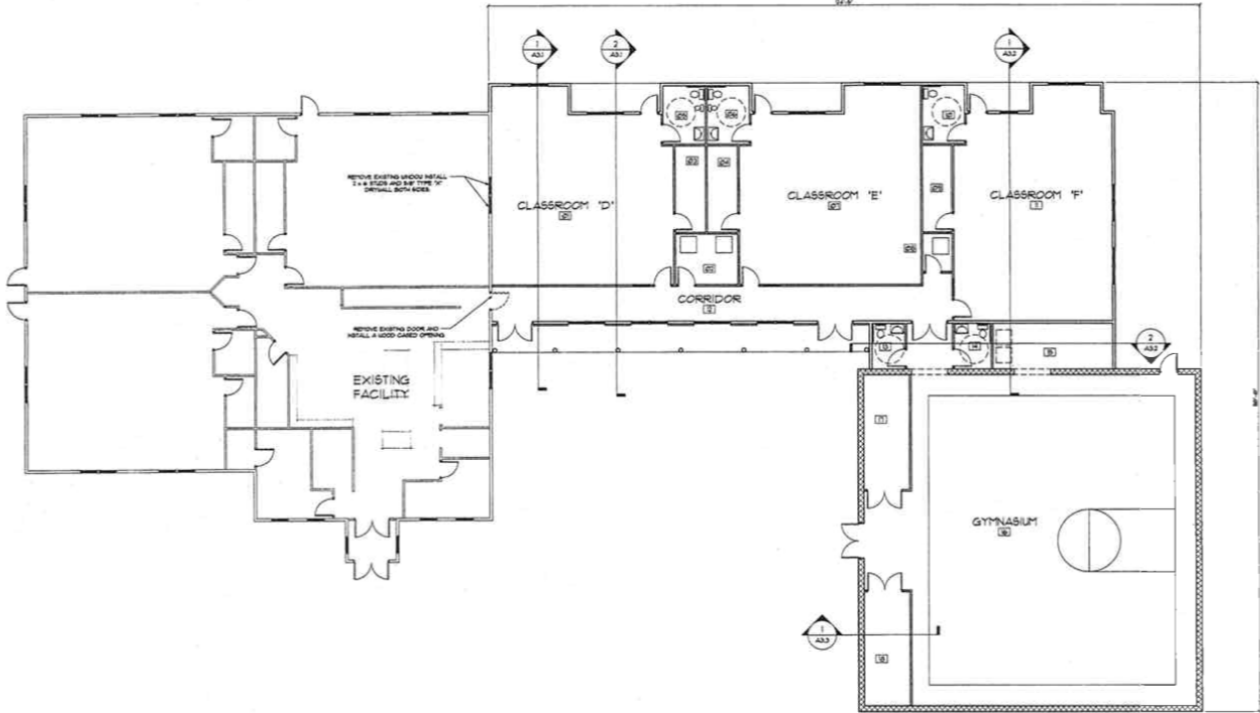
- + 1.68 Acres
- + Gymnasium/sanctuary
- + 7 large classrooms with restrooms
- + Large outdoor play area
- + 38 parking spaces
- + Zoned PUD (McCordsville, IN)

JEFF MERRITT
Principal
O 317.663.6537
C 317.714.5423
jeff.merritt@rcre.com

in #growIndiana

6633 W COUNTY ROAD 900 N

MCCORDSVILLE, IN 46055



6633 W COUNTY ROAD 900 N

MCCORDSVILLE, IN 46055

