

515 E. MINOR DRIVE
(NEAR RED BRIDGE ROAD & HOLMES ROAD)
KANSAS CITY, MISSOURI 64131

LAND FOR SALE | 5.03± ACRES



SUMMARY

ACRES	5.03± Acres
SALES PRICE	\$495,000 (\$2.26/SF)

PROPERTY FEATURES

- Zoning: B4-5 (Heavy Business/-Commercial)
- Potential uses include multi-family, senior living, retail, office, and mixed-use
- Utilities to the site
- Preliminary Development Plan in review with KCMO ensuring fast approval
- Adjacent to newly-redeveloped Red Bridge Shopping Center to the North, the new FEMA Region VII Headquarters with more than 240 employees to the East, and Coach House Apartments with over 800 units to the South and West

For more information, please contact:

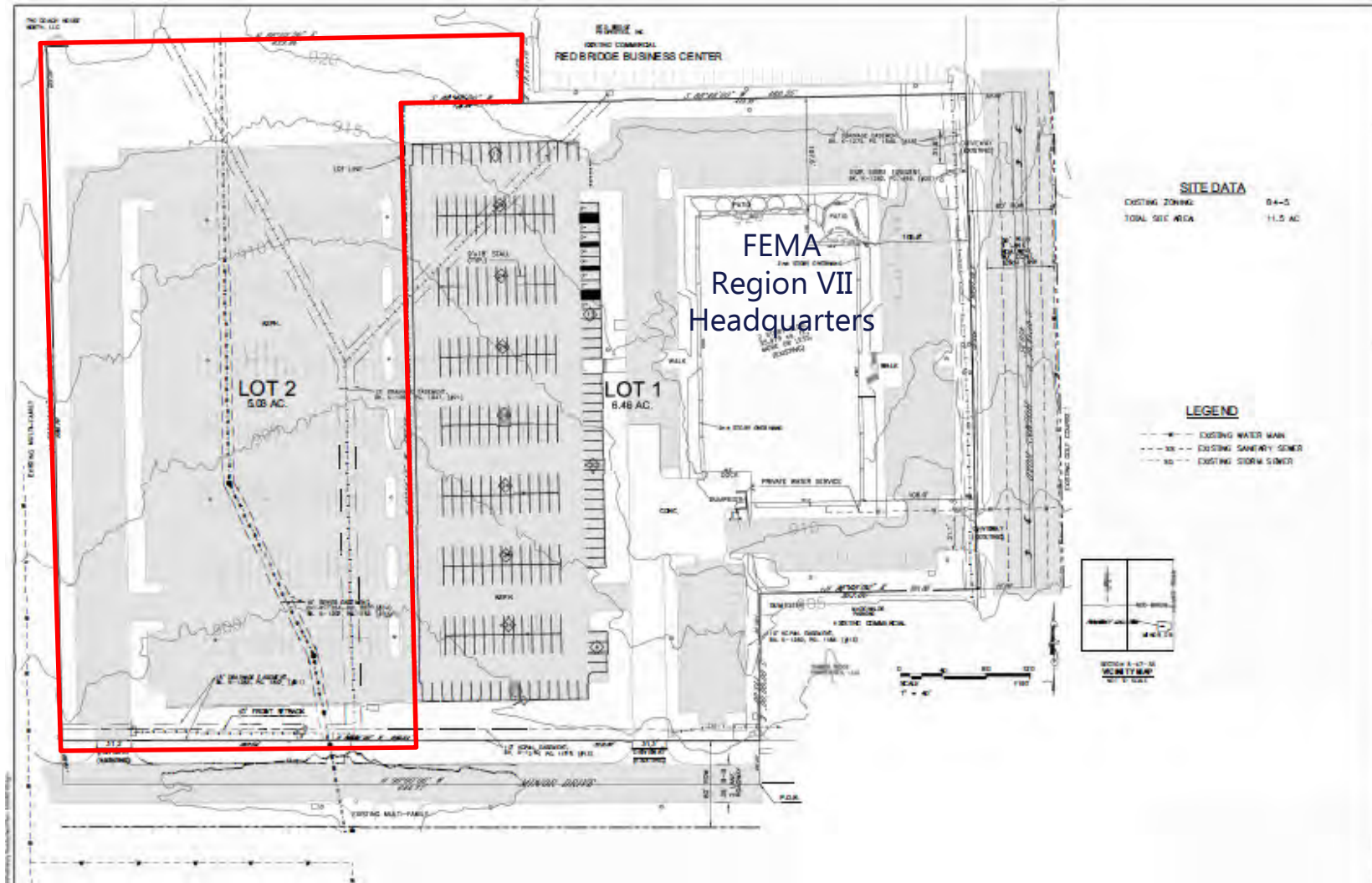
KEVIN CURTIN
Principal
816.842.2690 main
kcurtin@kessingerhunter.com

KESSINGER/HUNTER & COMPANY, LC
2600 Grand Boulevard, Suite 700
Kansas City, MO 64108
816.842.2690
www.kessingerhunter.com

515 E. MINOR DRIVE | KANSAS CITY, MISSOURI 64131

(Near Red Bridge Road & Holmes Road)

Land for Sale | 5.03± Acres



For more information, please contact:

KEVIN CURTIN
Principal
816.842.2690 direct
kcurtin@kessingerhunter.com

KESSINGER/HUNTER & COMPANY, LC
2600 Grand Boulevard, Suite 700
Kansas City, MO 64108
816.842.2690
www.kessingerhunter.com