

FOR LEASE

STEILACOOM CENTER

210 Wilkes St, Steilacoom, WA 98388



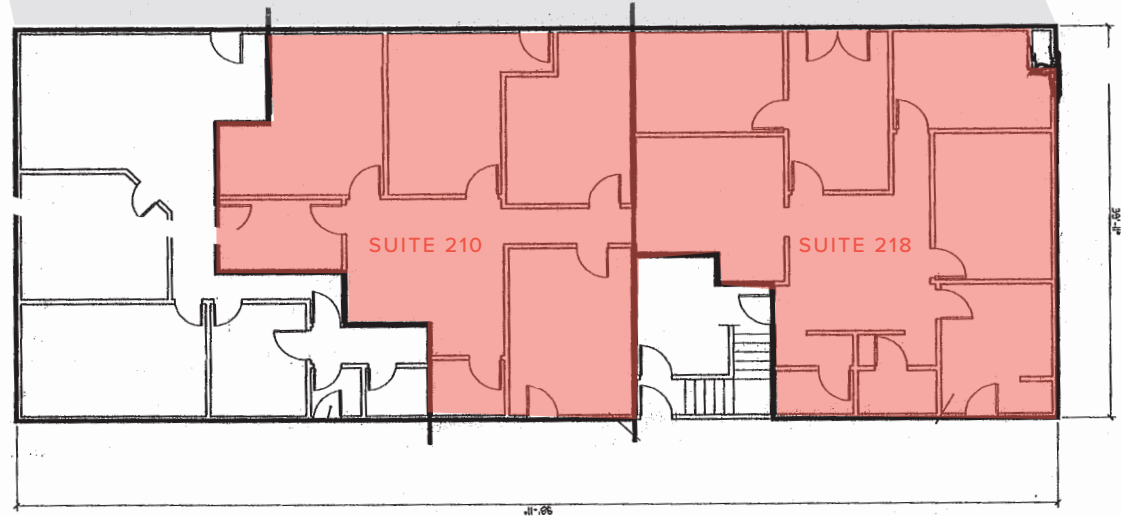
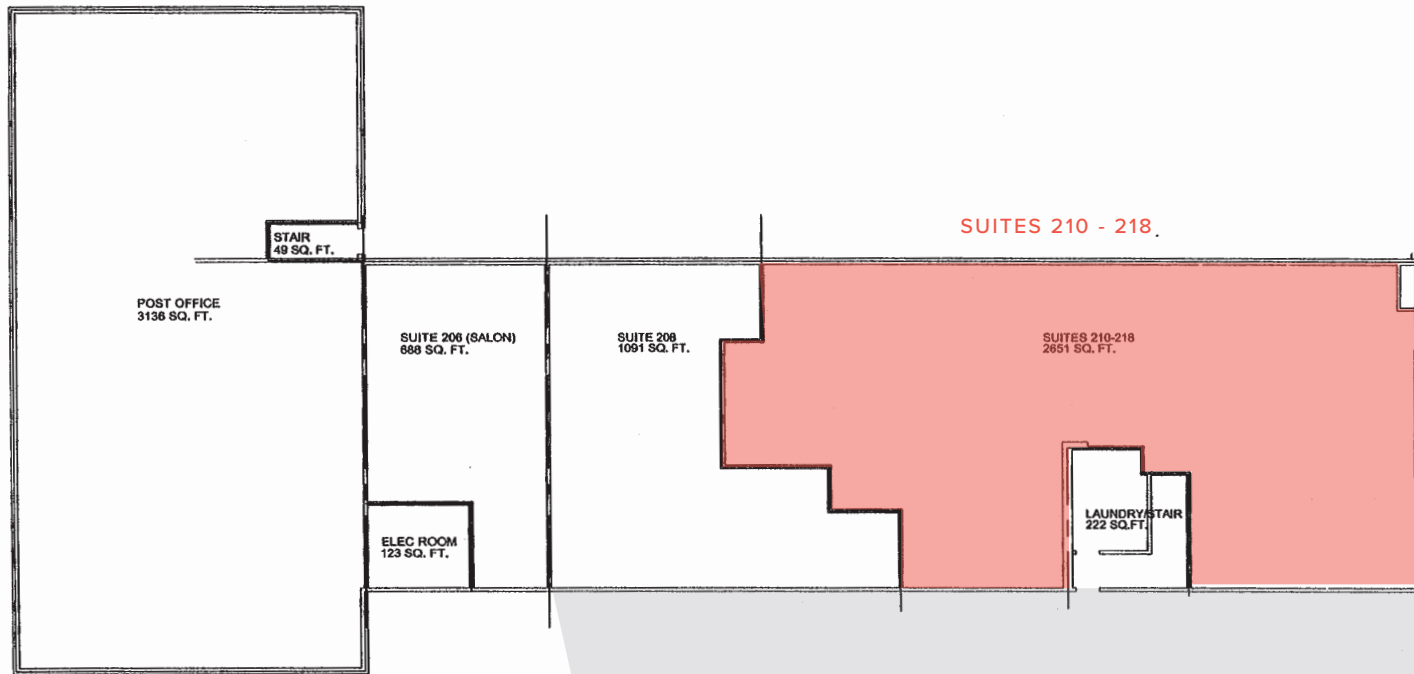


STEILACOOM CENTER

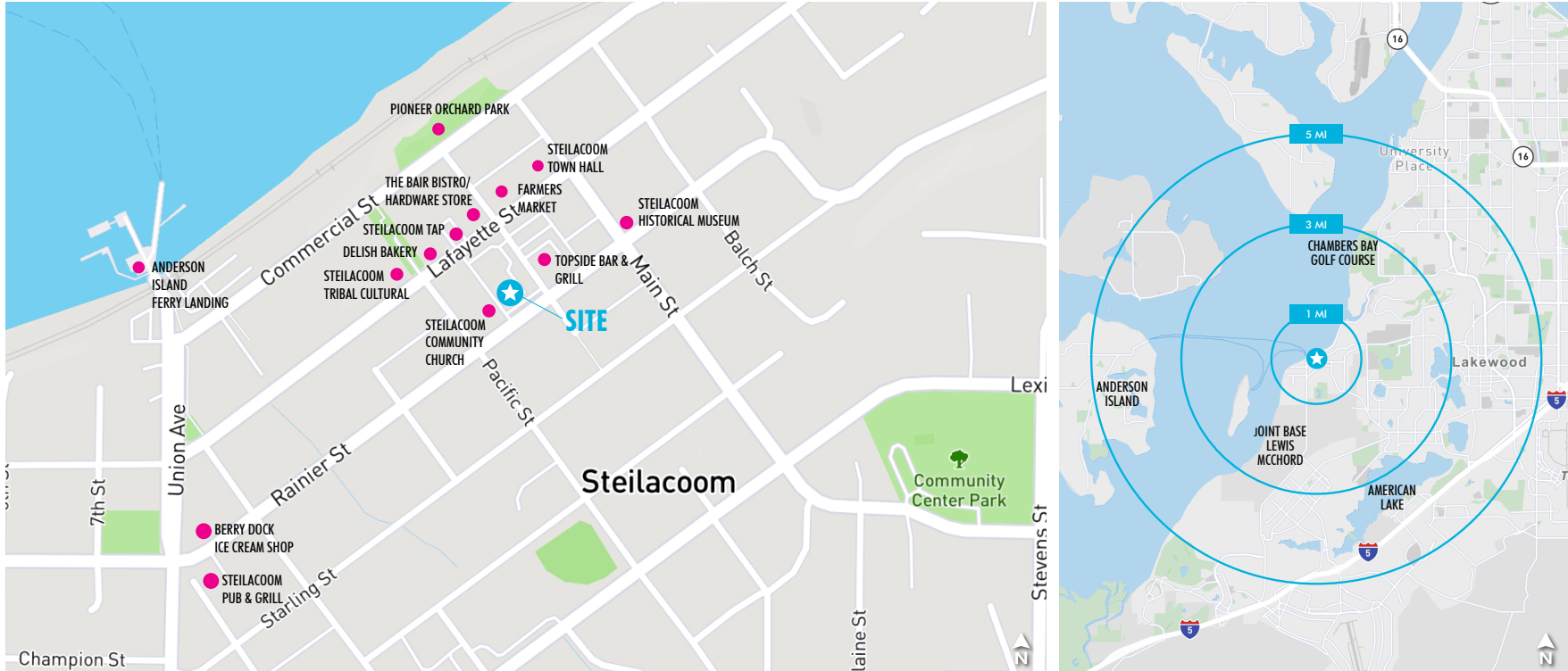
Professional office space, located in the heart of historic Steilacoom, located next to the United States Post Office. Within walking distance to Anderson Island Ferry, farmers market, restaurants, and Pioneer Orchard Park- featuring breathtaking views of the bay.

- **Suites Available**
Suites 210 -218: 2,650 SF (can be demised for 1,270 SF)
- **Lease Rate**
\$20 PSF, Modified Gross
- **Zoning**
General Commercial, City of Steilacoom

FLOOR PLANS



STEILACOOM CENTER



PLEASE CONTACT:

Leon Titus

Associate
+1 253 596 0042
leon.titus@cbre.com

CBRE, Inc.

1201 Pacific Avenue
Suite 1502
Tacoma, WA 98402

DEMOGRAPHICS	1 MILE	3 MILES	5 MILES
Population	5,822	34,550	111,043
Average Household Income	\$117,710	\$95,388	\$92,111
Daytime Population	5,115	30,048	113,059

© 2019 CBRE, Inc. All rights reserved. This information has been obtained from sources believed reliable, but has not been verified for accuracy or completeness. You should conduct a careful, independent investigation of the property and verify all information. Any reliance on this information is solely at your own risk. CBRE and the CBRE logo are service marks of CBRE, Inc. All other marks displayed on this document are the property of their respective owners, and the use of such logos does not imply any affiliation with or endorsement of CBRE. Photos herein are the property of their respective owners. Use of these images without the express written consent of the owner is prohibited. RB 11.03.20