

NOTES:

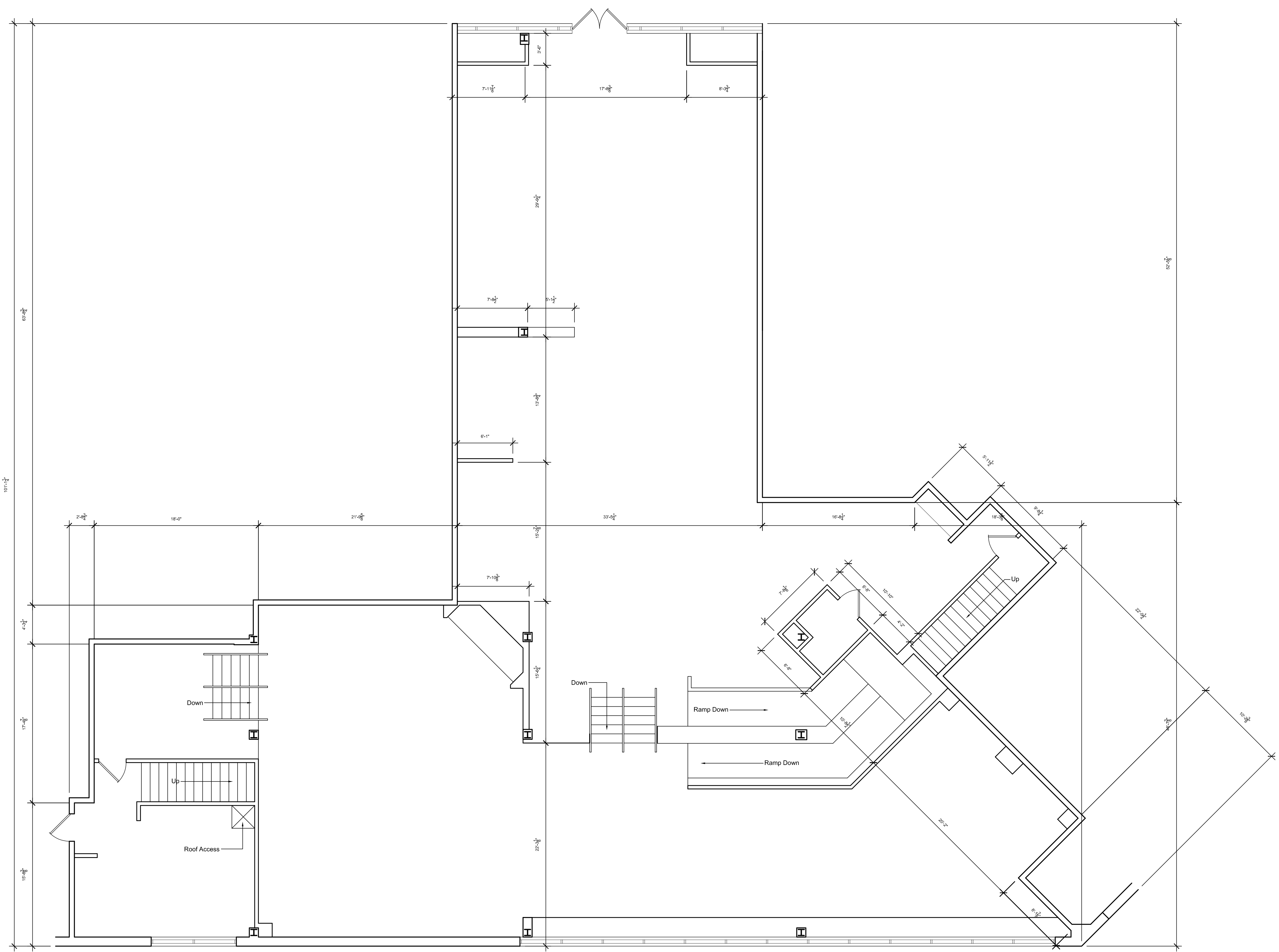
		X.X.02	First Printing
△	-		
REV.	NO.	DATE	ISSUE NOTES

This drawing is the property of DRK Realty, and is issued subject to the condition that it is not to be copied or reproduced either in whole or in part, or used in any manner detrimental to our interest. Drawings are not to be scaled. It is the responsibility of the contractor to verify all dimensions contained in these drawings, and to notify the architect of any discrepancies or inconsistencies prior to the start of construction. Contractor to notify architect of any intended change in construction materials, methods, size, etc., as indicated on drawings for review and approval prior to commencement of such work.

Glenview Pointe
Suite B
2400 Lime Kiln Ln
Louisville, Kentucky 40222

DATE: 06.04.13
DRAWN BY: MRO
CHECKED BY: -
PROJECT NO: -

SHEET A100 OF 4 REVISION

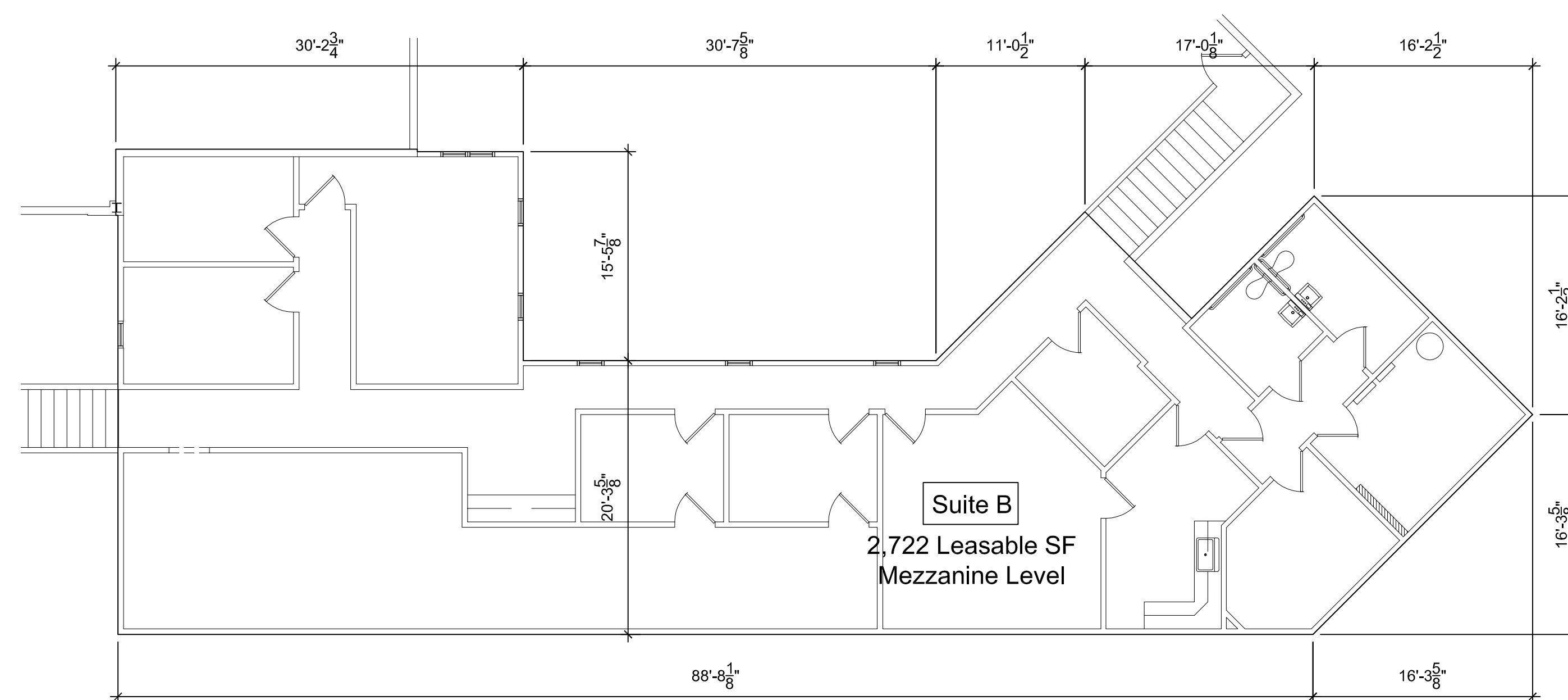
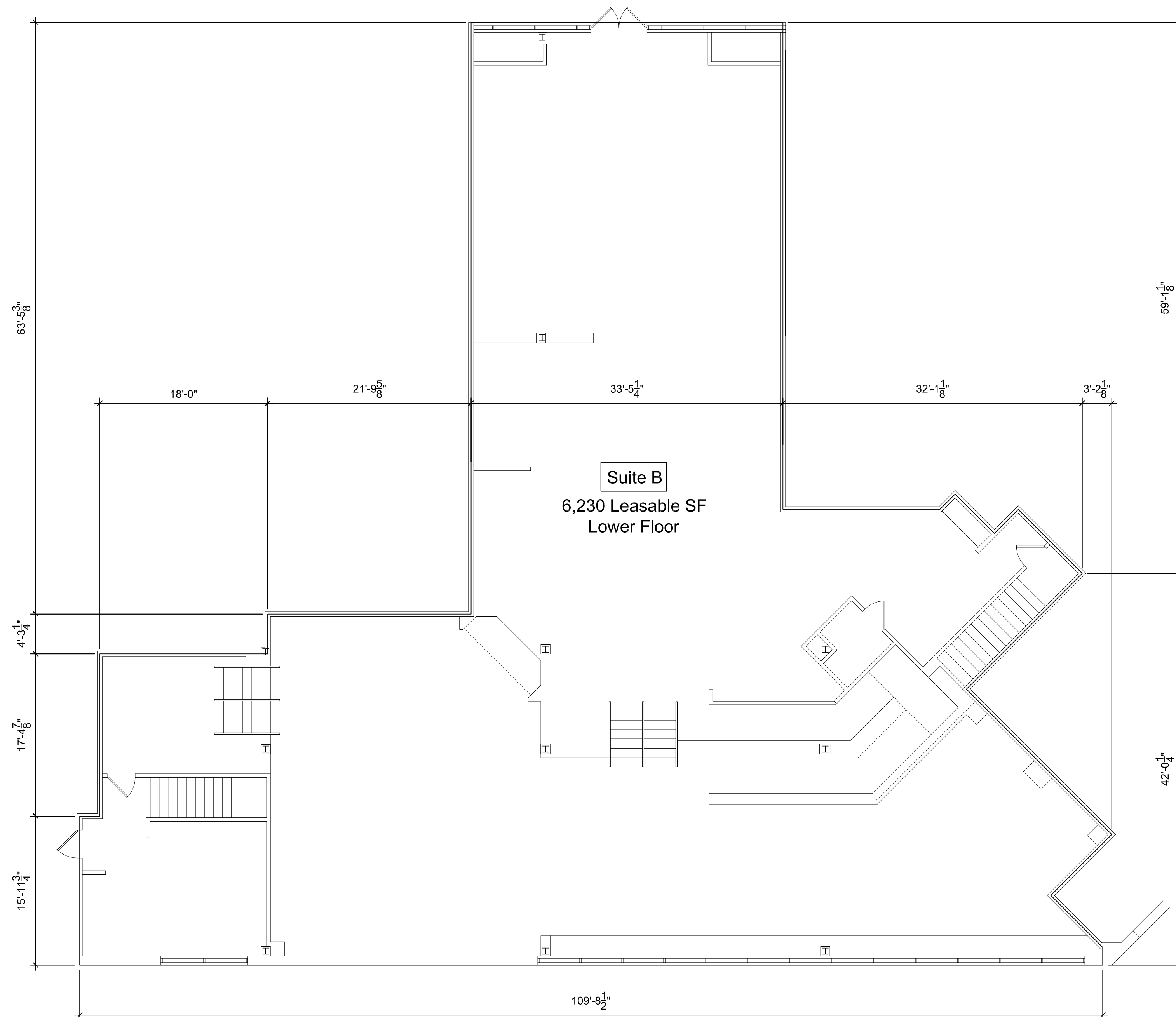


Floor Plan - Lower Level

SCALE: 3/16"=1'-0"

A
B
C
D
E
F
G
H

1 2 3 4 5 6 7 8 9 10



Floor Plan - Leasable SF
Gross Leasable Space: 8,952 SF

SCALE: 1/8"=1'-0"

NOTES:

A
B
C
D
E
F
G
H

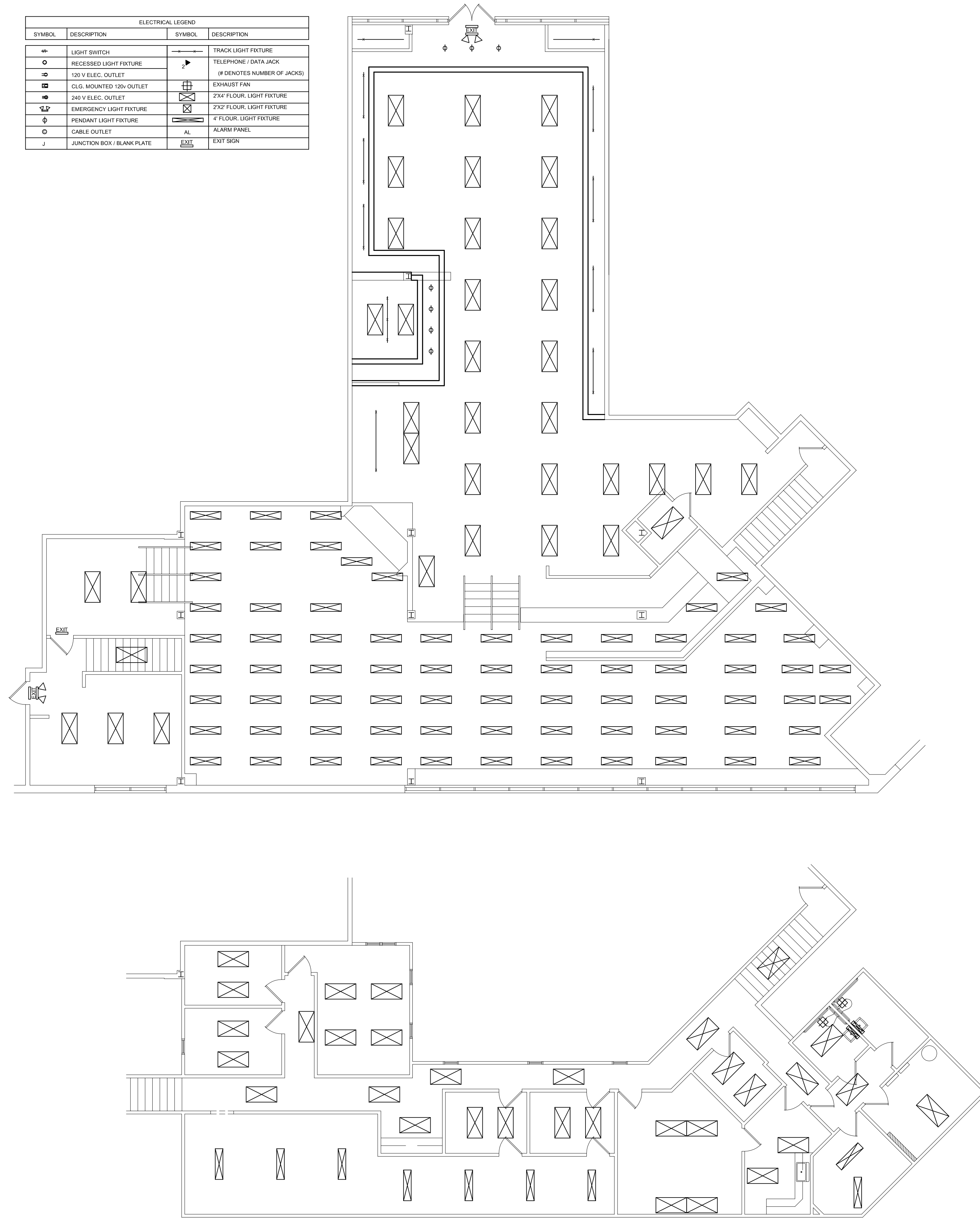
		X.X.02	First Printing
	-		
REV.	NO.	DATE	ISSUE NOTES

This drawing is the property of DRK Realty, and is issued subject to the condition that it is not to be copied or reproduced either in whole or in part, or used in any manner detrimental to our interest. Drawings are not to be scaled. It is the responsibility of the contractor to verify all dimensions contained in these drawings, and to notify the architect of any discrepancies or inconsistencies prior to the start of construction. Contractor to notify architect of any intended change in construction materials, methods, size, etc., as indicated on drawings for review and approval prior to commencement of such work.

Glenview Pointe
Suite B
2400 Lime Kiln Ln
Louisville, Kentucky 40222

DATE: 06.04.13
DRAWN BY: MRO
CHECKED BY: -
PROJECT NO. -

ELECTRICAL LEGEND			
SYMBOL	DESCRIPTION	SYMBOL	DESCRIPTION
⊕	LIGHT SWITCH	⊕	TRACK LIGHT FIXTURE
○	RECESSED LIGHT FIXTURE	⊕	TELEPHONE / DATA JACK (# DENOTES NUMBER OF JACKS)
⊕	120 V. ELEC. OUTLET	⊕	EXHAUST FAN
⊕	CLG. MOUNTED 120V OUTLET	⊕	2'x4' FLOOR LIGHT FIXTURE
⊕	240 V. ELEC. OUTLET	⊕	2'x2' FLOOR LIGHT FIXTURE
⊕	EMERGENCY LIGHT FIXTURE	⊕	4' FLOOR LIGHT FIXTURE
⊕	PENDANT LIGHT FIXTURE	AL	ALARM PANEL
⊕	CABLE OUTLET	EXIT	EXIT SIGN
J	JUNCTION BOX / BLANK PLATE		



Lighting Plan
SCALE: 1/8"=1'-0"

NOTES:

REV.	NO.	DATE	ISSUE NOTES
		X.X.02	First Printing

This drawing is the property of DRK Realty, and is issued subject to the condition that it is not to be copied or reproduced either in whole or in part, or used in any manner detrimental to our interest. Drawings are not to be scaled. It is the responsibility of the contractor to verify all dimensions contained in these drawings, and to notify the architect of any discrepancies or inconsistencies prior to the start of construction. Contractor to notify architect of any intended change in construction materials, methods, size, etc., as indicated on drawings for review and approval prior to commencement of such work.

Glenview Pointe
Suite B
2400 Lime Kiln Ln
Louisville, Kentucky 40222

DATE: 06.04.13
DRAWN BY: MRO
CHECKED BY: -
PROJECT NO: -

SHEET A103 OF 4 REVISION

A
B
C
D
E
F
G
H

1 2 3 4 5 6 7 8 9 10