

# PIKESVILLE RETAIL SPACE FOR LEASE

50 E. SUDBROOK LANE, PIKESVILLE, MD 21208

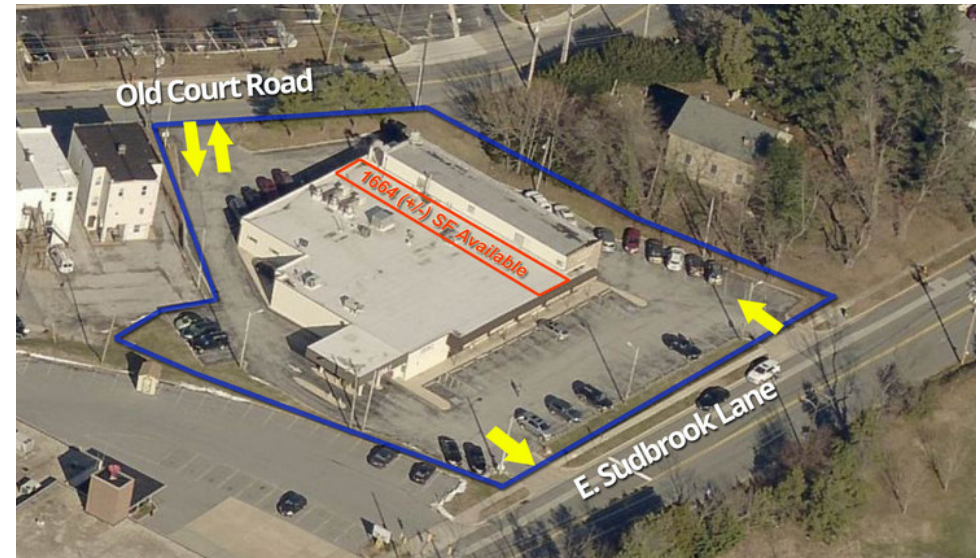


Executive Summary



## PROPERTY HIGHLIGHTS

- Rarely available small store retail space in Pikesville
- Great signage and visibility
- Busy, well maintained strip shopping center
- 1664 square feet
- All retail uses considered; currently operating as a beauty salon
- Tenant mix includes BB&T Bank, Jumbo Seafood Chinese Restaurant, Stevenson Village Veterinary Hospital, Polovoy Custom Cleaners
- Easy access to / from I-695, Reisterstown Road, Stevenson Road, Park Heights Avenue & I-83 (Jones Falls Expressway)
- Two- way ingress & egress from front and rear of property
- Available August, 2017



James Cornblatt

410.963.9662

jcornblatt@troutdaniel.com

Steven L. Cornblatt

443.921.9331

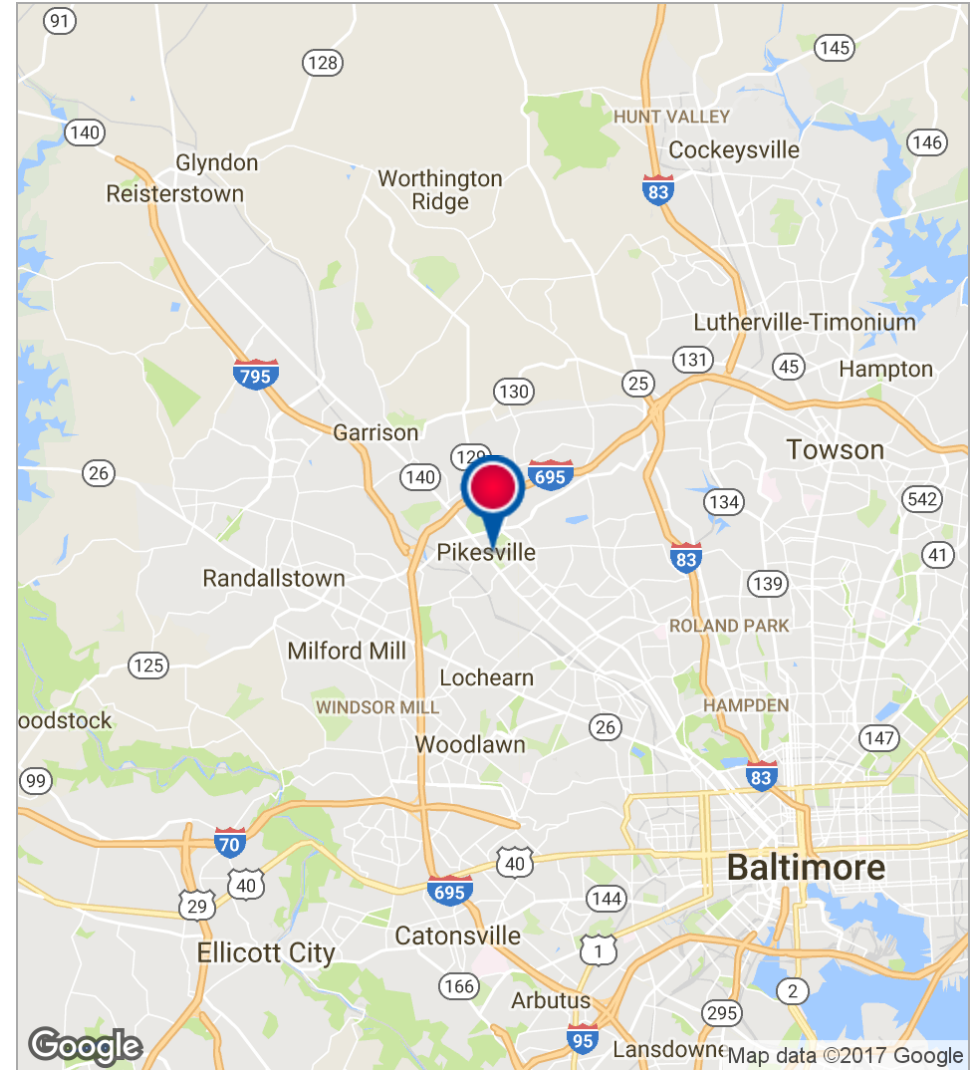
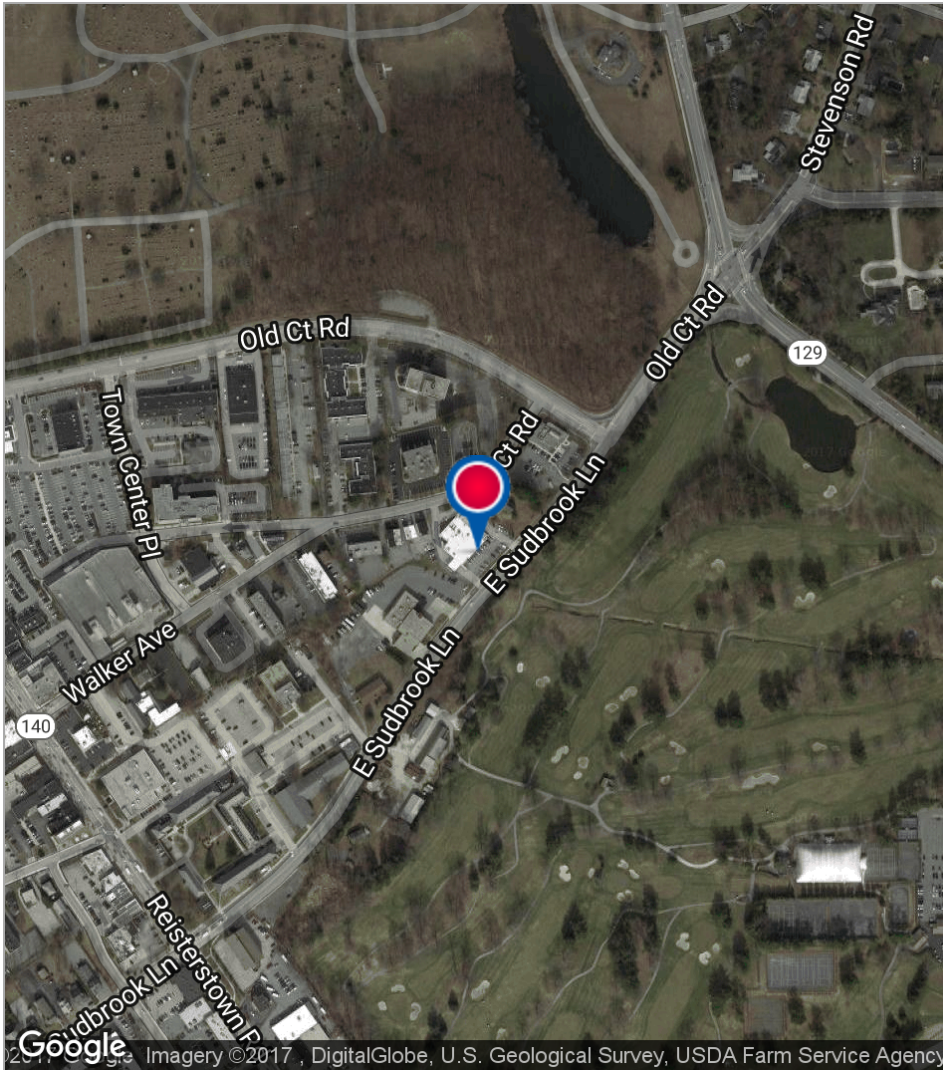
scornblatt@troutdaniel.com

# PIKESVILLE RETAIL SPACE FOR LEASE

50 E. SUDBROOK LANE, PIKESVILLE, MD 21208



Location Maps



**James Cornblatt**  
410.963.9662  
jcornblatt@troutdaniel.com

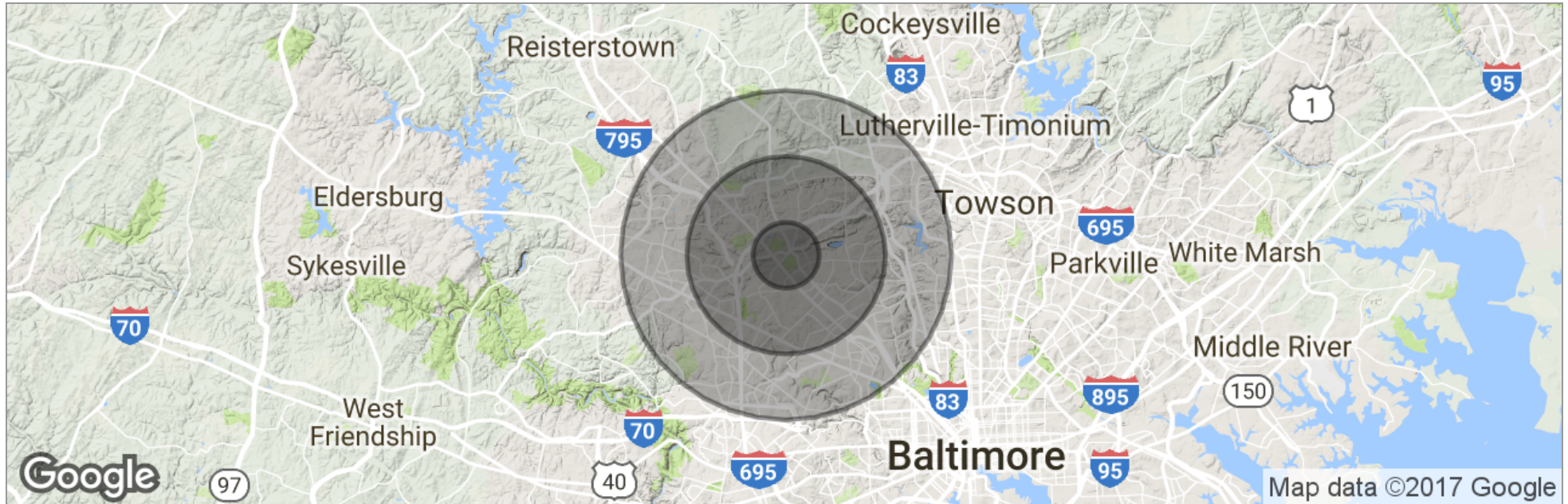
**Steven L. Cornblatt**  
443.921.9331  
scornblatt@troutdaniel.com

# PIKESVILLE RETAIL SPACE FOR LEASE

50 E. SUDBROOK LANE, PIKESVILLE, MD 21208



Demographics Map



	1 Mile	3 Miles	5 Miles
Total Population	11,015	102,324	273,053
Population Density	3,506	3,619	3,477
Median Age	47.0	41.0	39.7
Median Age (Male)	44.2	38.4	37.5
Median Age (Female)	50.0	43.4	41.6
Total Households	5,196	42,678	107,856
# of Persons Per HH	2.1	2.4	2.5
Average HH Income	\$66,376	\$76,314	\$75,544
Average House Value	\$287,663	\$306,000	\$303,497

\* Demographic data derived from 2010 US Census

**James Cornblatt**

410.963.9662  
jcornblatt@troutdaniel.com

**Steven L. Cornblatt**

443.921.9331  
scornblatt@troutdaniel.com