

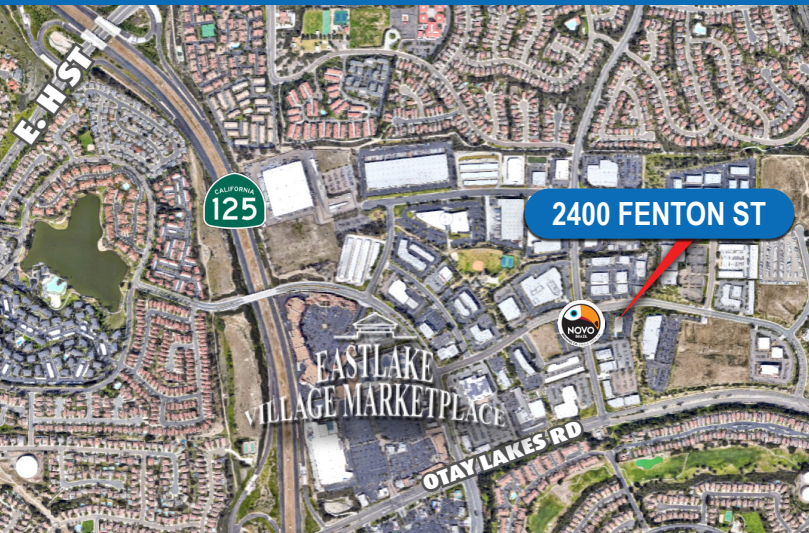
# FOR LEASE

PROFESSIONAL OFFICE  
2400 FENTON STREET, CHULA VISTA CA 91941

**ELECTRIC  
INCLUDED**



## PROFESSIONAL OFFICE SUITES



- Common Areas Completely Remodeled with Modern Finishes!
- Ample Parking
- Free Common Area Conference Room on Ground Floor
- Great Location in Eastlake
- Near Shopping, Restaurants and Nova Brazil Brewing
- Easy Access to/from HWY 125 via Otay Lakes Rd.
- Full Service Gross Lease (Landlord Pays Electrical & HVAC)

**COMMERCIAL  
ASSET  
ADVISORS**

**TODD SIMONSEN**  
Sales Associate  
Todd@caacre.com  
Lic # 02131564

**MIKE CONGER**  
Principal  
Mike@caacre.com  
Lic # 01381193

**BRIAN JENKINS**  
Principal  
Brian@caacre.com  
Lic # 01814828

**858.360.3000 | caacre.com**

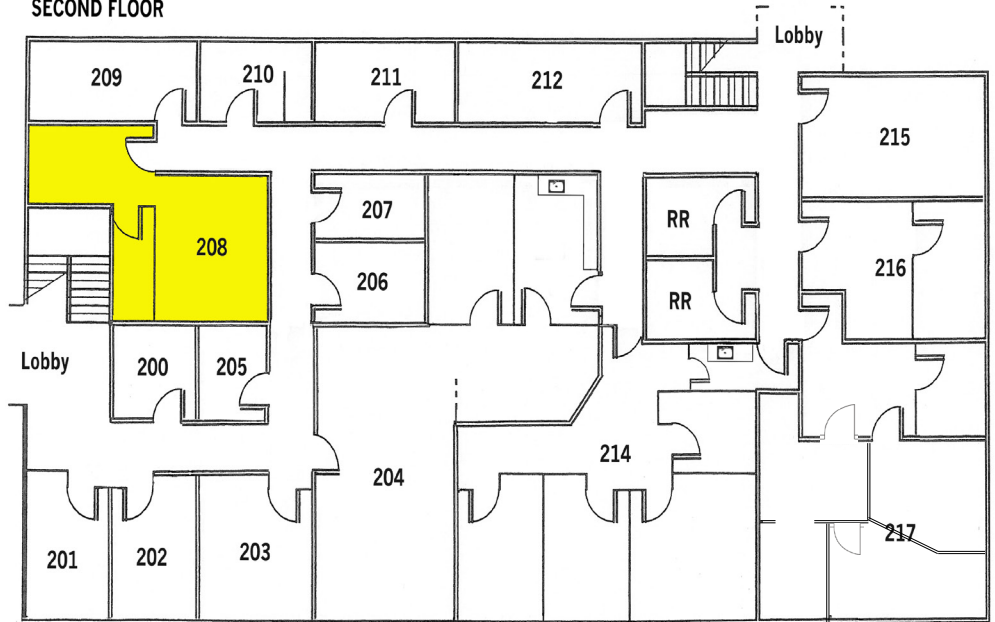


# FOR LEASE

**PROFESSIONAL OFFICE**  
2400 FENTON STREET, CHULA VISTA CA 91941



SECOND FLOOR



Not to scale, for illustrative purposes only.

SUITE	SQ FT	RATE	DESCRIPTION
208	649	\$1,799 / Mo	• Available Now



**COMMERCIAL  
ASSET  
ADVISORS**

**TODD SIMONSEN**  
Sales Associate  
Todd@caacre.com  
Lic # 02131564

**MIKE CONGER**  
Principal  
Mike@caacre.com  
Lic # 01381193

**BRIAN JENKINS**  
Principal  
Brian@caacre.com  
Lic # 01814828

**858.360.3000 | caacre.com**