



SUITE B FOR LEASE

230 W Mallard Drive
SF AVAILABLE: 1,130 RSF
BUILDING SIZE: 4,490 SF

PROPERTY HIGHLIGHTS

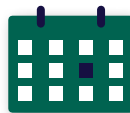
- Great Southwest Boise Location
- Minutes from Downtown
- Close Proximity to Logger's Creek
- Ample Parking
- Open Plan Great for Pilates, Yoga, Insurance Office, Etc.
- Monument Sign
- Skylights at Entrance to Suite



AVAILABLE SPACE
1,130 RSF



BUILDING SIZE
4,490 SF



LEASE TERM
3 - 5 Years



ASKING RATE
\$16.50 RSF/YR



INTERMOUNTAIN
COMMERCIAL REAL ESTATE

WENDY SHOEMAKER
wendys@icrellc.com
(208) 285-2611 office
(208) 859-2816 cell

www.icreboise.com | 380 E. Parkcenter Boulevard Suite 290, Boise, ID 83706 | (208) 429-8603 office | (208) 429-8604 fax

The information has been obtained from sources believed reliable and, while we do not doubt its reliability, ICRE has not verified it and makes no guarantees, warranties or representations, expressed or implied, as to its accuracy. All interested parties should conduct their own independent investigation and rely on those results.



EXECUTIVE SUMMARY

Available SF: **1,130 RSF**

Building Size: **4,490 SF**

Lease Rate: **\$16.50 RSF/yr**

Lease Type: **Full Service,
Excluding Janitorial**

Lot Size: **.526 Acres**

Type: **Office/Retail**

Year Built: **1988**

Zoning: **R-3D**

Market: **Southeast Boise**



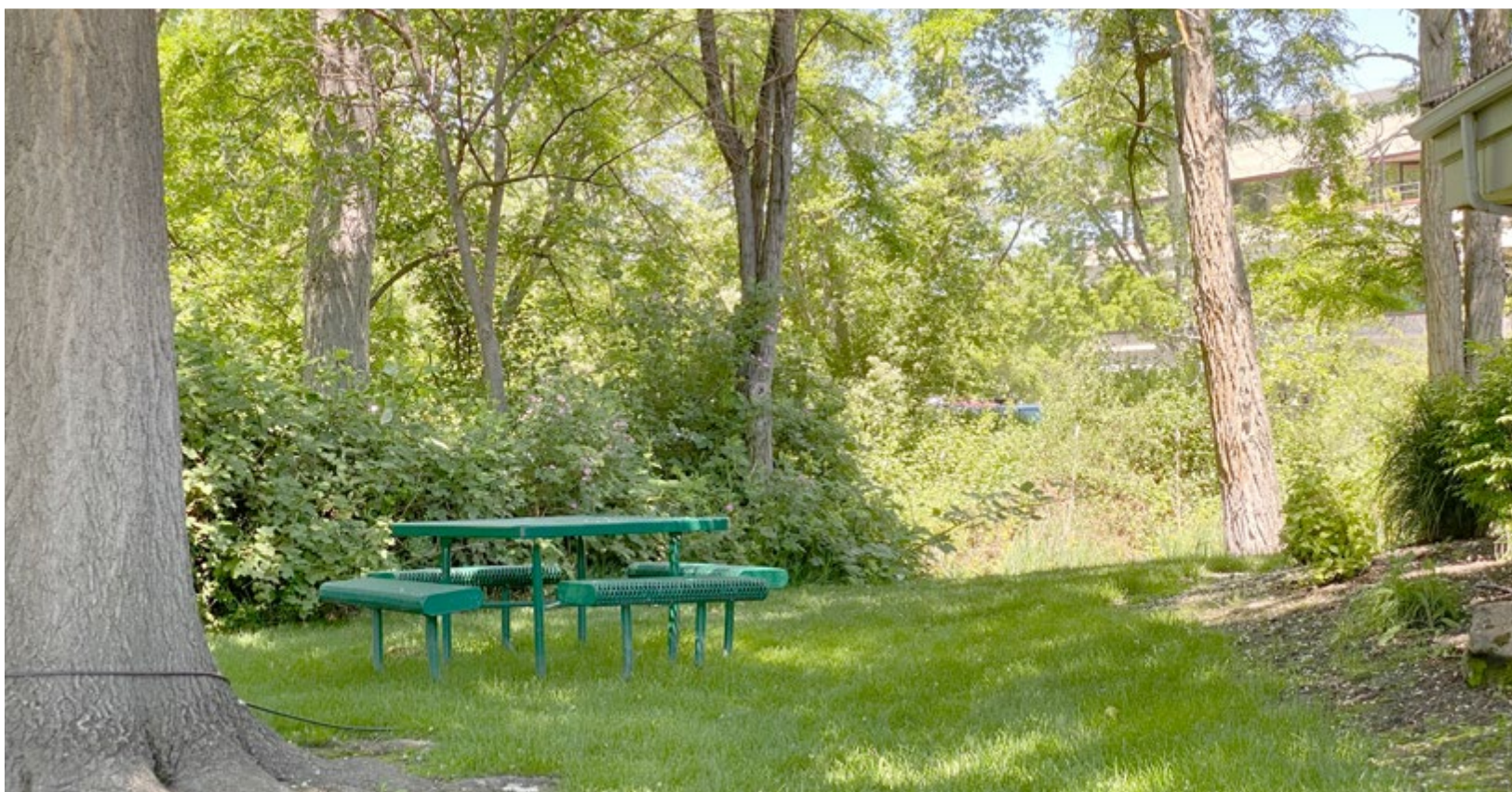
INTERMOUNTAIN
COMMERCIAL REAL ESTATE

WENDY SHOEMAKER

wendys@icrellc.com

(208) 285-2611 office

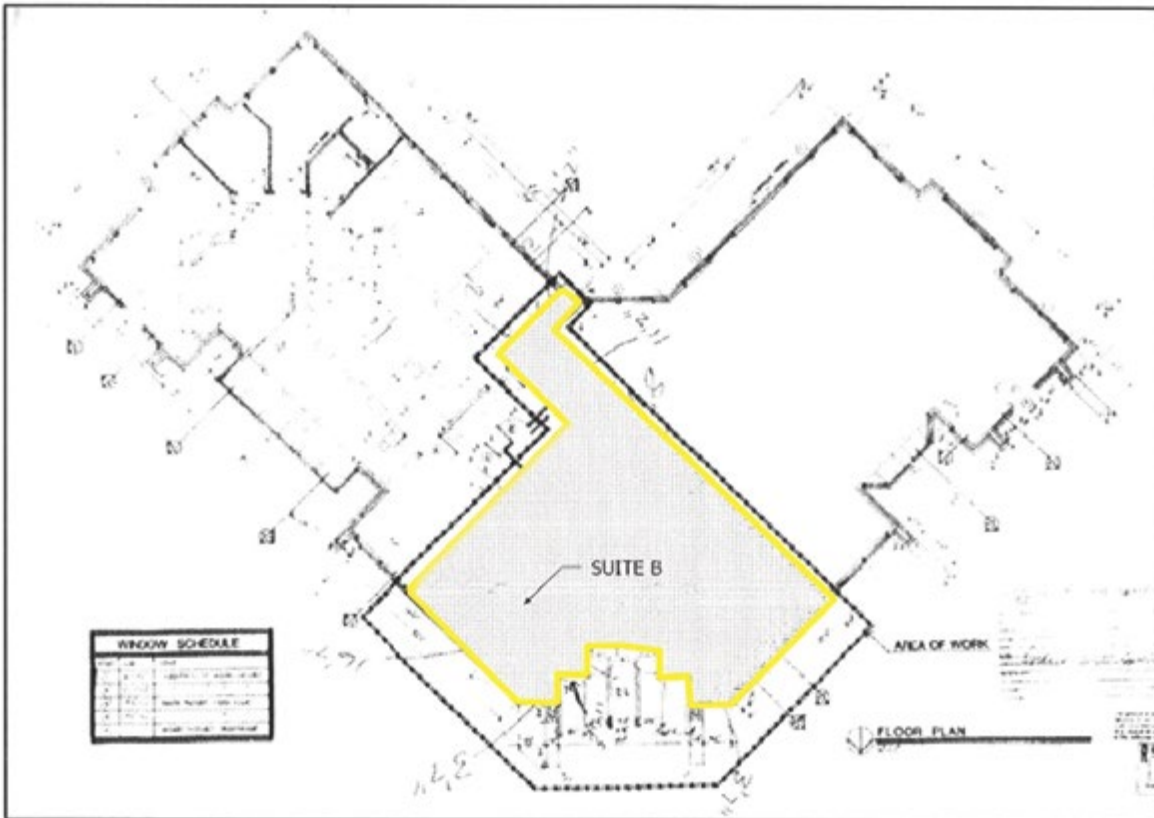
(208) 859-2816 cell



INTERMOUNTAIN
COMMERCIAL REAL ESTATE

WENDY SHOEMAKER

wendys@icrellc.com
(208) 285-2611 office
(208) 859-2816 cell



INTERMOUNTAIN
COMMERCIAL REAL ESTATE

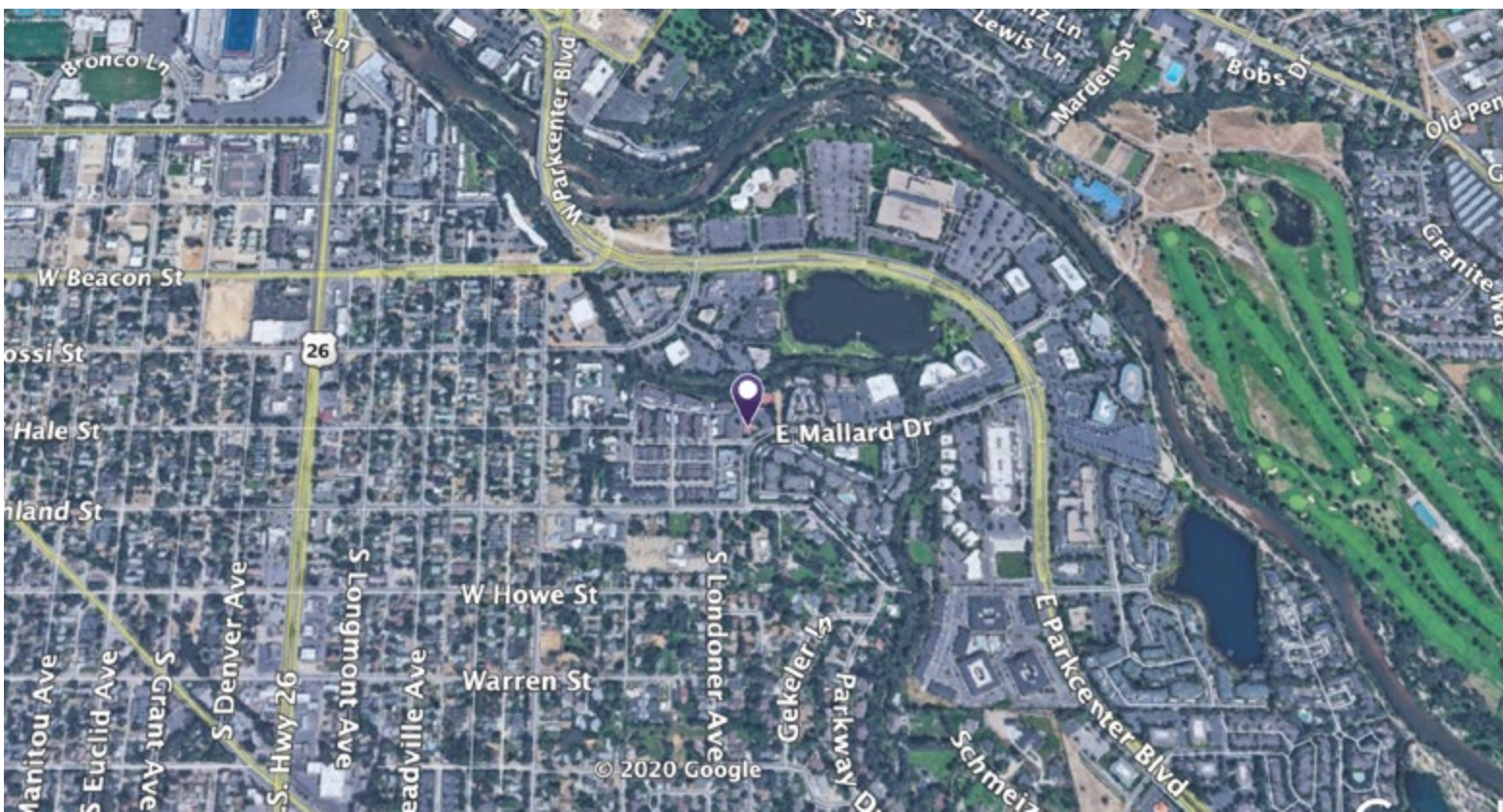
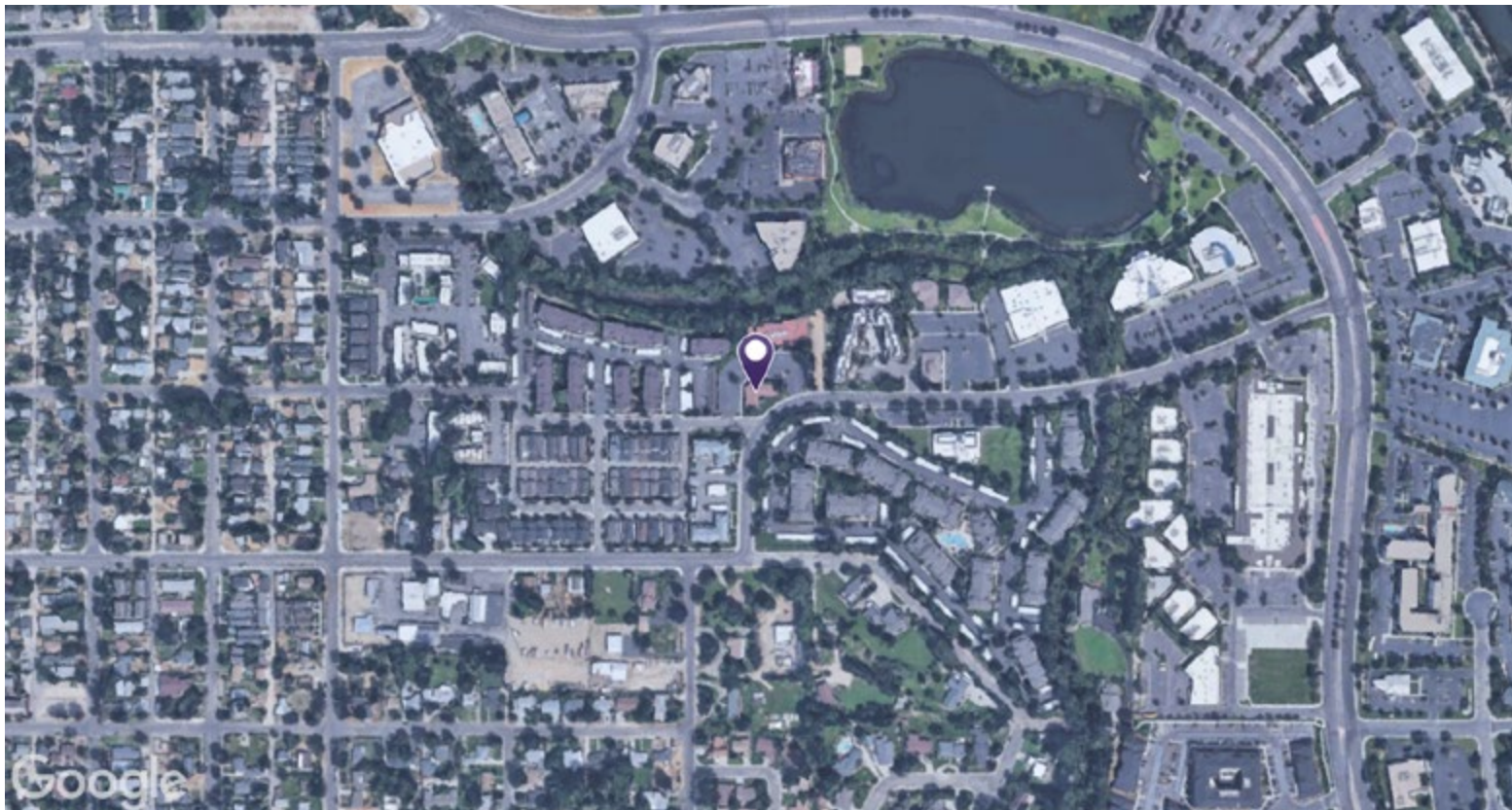
WENDY SHOEMAKER

wendys@icrellc.com

(208) 285-2611 office

(208) 859-2816 cell

SUITE B | 230 W MALLARD DRIVE, BOISE



INTERMOUNTAIN
COMMERCIAL REAL ESTATE

WENDY SHOEMAKER

wendys@icrellc.com

(208) 285-2611 office

(208) 859-2816 cell

www.icreboise.com | 380 E. Parkcenter Boulevard Suite 290, Boise, ID 83706 | (208) 429-8603 office | (208) 429-8604 fax

The information has been obtained from sources believed reliable and, while we do not doubt its reliability, ICRE has not verified it and makes no guarantees, warranties or representations, expressed or implied, as to its accuracy. All interested parties should conduct their own independent investigation and rely on those results.