

LIFT LOGISTICS 212TH

5801 SOUTH 212TH STREET, KENT, WA 98032



CLASS A INDUSTRIAL WAREHOUSE IN THE HEART OF WASHINGTON'S KENT VALLEY

For more information:

Connor Powell

+1 425 586 5642

cpowell@nai-psp.com

Jeff Forsberg, CCIM

+1 425 586 5610

jforsberg@nai-psp.com

Arie Salomon, SIOR, CCIM

+1 425 586 5636

asalomon@nai-psp.com

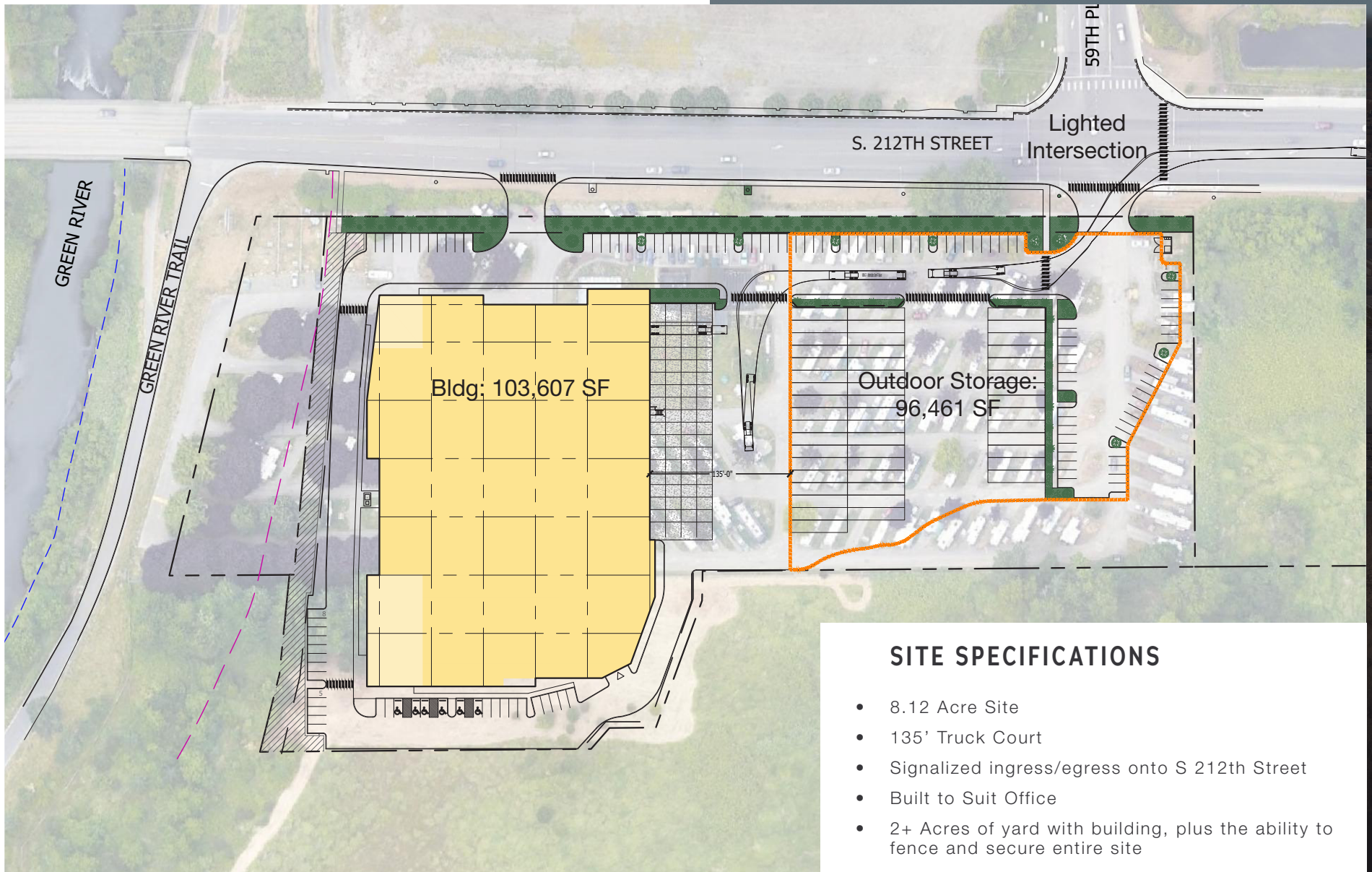


Lift Partners

NAI Puget Sound
Properties

LIFT LOGISTICS 212TH SITE PLAN

[LIVE WEBCAM LINK](#)



CLASS A STANDALONE WAREHOUSE DELIVERING IN Q4 2022



Committed to developing the next generation of industrial assets, Lift Partners is proud to present Lift Logistics 212th, a state-of-the-art industrial warehouse located in the heart of Kent Valley.

WAREHOUSE SPECIFICATIONS

- 103,607 SF
- 40' Clear Height
- 56' Column Spacing
- 8" Reinforced Slab
- ESFR Sprinklers System
- LED Lights
- 16 Dock High Loading Doors
- 1 Oversized Glade Level Door
- 60' Speed Bay
- Skylights and high bay window cutouts provide ample natural light

BUILT-TO-SUIT OPPORTUNITY



SITE HIGHLIGHTS

- Lift Logistics 212th caters to the market's leading industrial users with both best-in-class building features and its unmatched Kent Valley location.
- Nearby amenities include Green River Trail access, drive-thru eateries, restaurants and hotels
- Over 2 acres of yard with building, plus ability to fence and secure site
- Ample yard storage for trailers, materials and fleet storage & maintenance
- Directly across 212th from two Amazon facilities (Fulfillment Center & USPS Sorting Facility)

LINKED TO ALL MAJOR HIGHWAYS



SEATAC INTERNATIONAL AIRPORT:
13 MINUTES 5.1 MILES



INTERSTATE 5:
6 MINUTES 2.6 MILES



HIGHWAY 167:
5 MINUTES 2 MILES



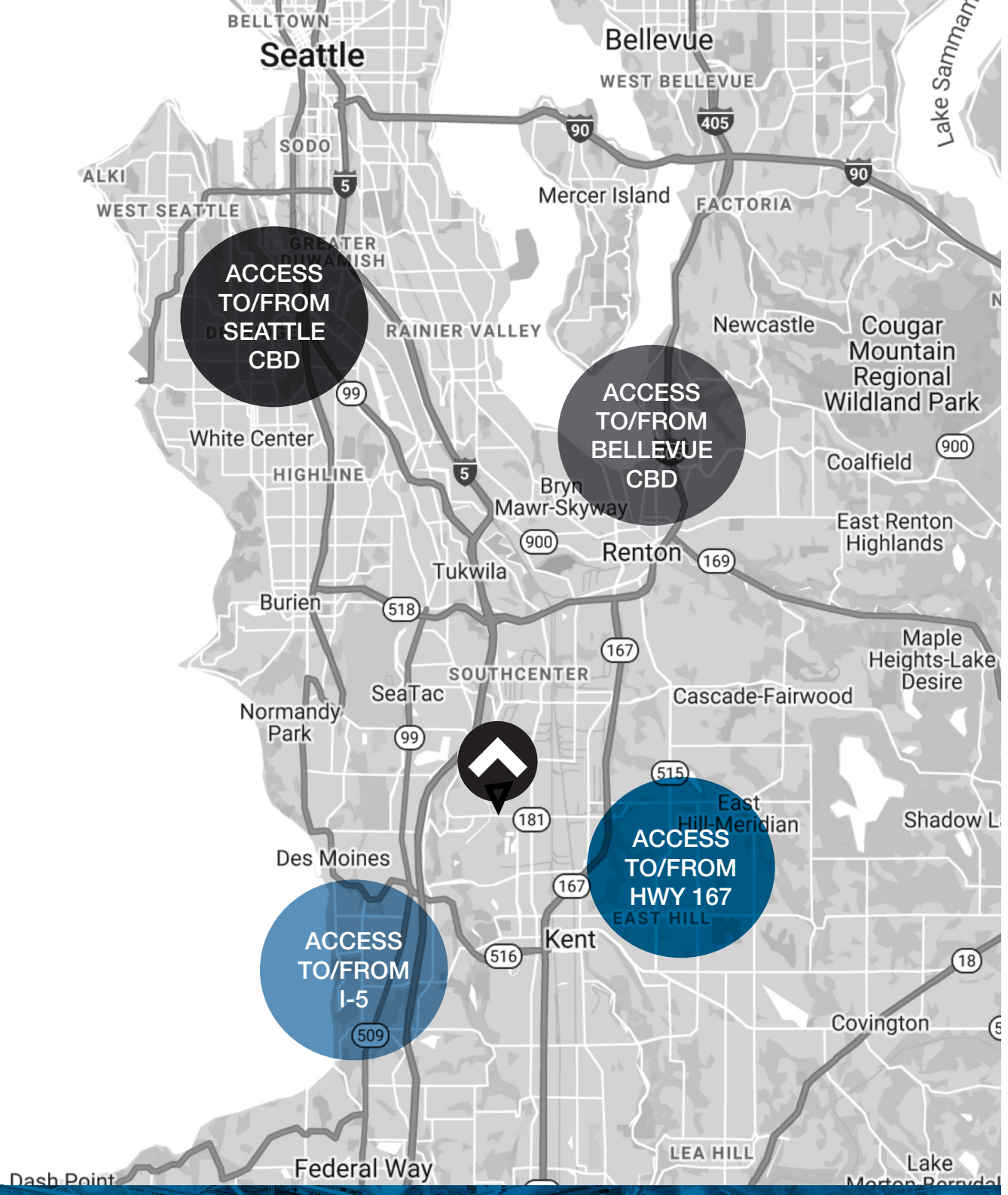
THE NORTHWEST
SEAPORT ALLIANCE
SEATTLE + TACOMA

PORT OF SEATTLE:
21 MINUTES 14 MILES



THE NORTHWEST
SEAPORT ALLIANCE
SEATTLE + TACOMA

PORT OF TACOMA:
29 MINUTES 18.5 MILES



Downtown
Seattle

pitney bowes

Kraft

cenveo.

sa
surface art inc

CM
CONTINENTAL MILLS
FOOD PRODUCTS OF CHOICE

IRON MOUNTAIN

BLUE ORIGIN

PT
Performance Tool

BRIGHTON-BEST
INTERNATIONAL

Columbia
berburg

HD
SUPPLY

amazon

amazon

CRANE
WORLDWIDE LOGISTICS

GEODIS

S 212th St

Subject
Property

For more information:

Connor Powell

+1 425 586 5642

cpowell@nai-ppsp.com

Jeff Forsberg, CCIM

+1 425 586 5610

jforsberg@nai-ppsp.com

Arie Salomon, SIOR, CCIM

+1 425 586 5636

asalomon@nai-ppsp.com



Lift Partners

NAI Puget Sound
Properties