



# FOUNTAINHEAD

555 Southpointe Blvd. | Canonsburg, PA 15317



5,000 - 23,511 SQFT

## OFFICE SPACE



### SPECS

- Premier office space located at the entrance of Southpointe
- Overlooks Golf course and Southpointe Valley
- Monument signage available
- Energy efficient building with reflective Low-E glass
- Abundant, free parking
- On-site waterfall, outdoor walkway, ponds, break areas
- Located along I-79 interchange



KELLEY HOOVER HECKATHORNE

412.670.4248  
khoover@burnsscalo.com



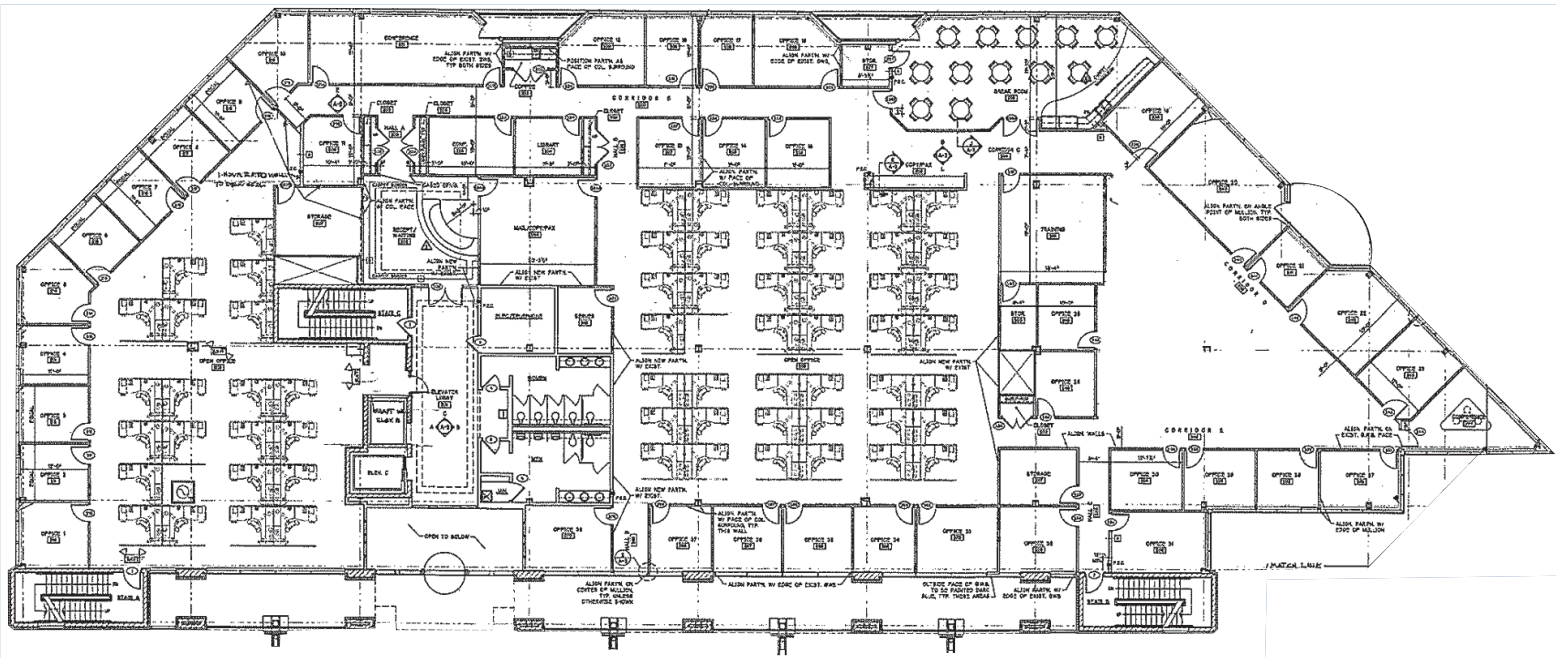
Burns-ScaloRealEstate.com | 412.250.3000





# FOUNTAINHEAD

555 Southpointe Blvd. | Canonsburg, PA 15317



2nd Floor  
23,511 SF



KELLEY HOOVER HECKATHORNE

412.670.4248  
khoover@burnsscalo.com

