



55

BROOKLYN, NY
BAY STREET

UNDER CONSTRUCTION / DELIVERING Q3 2020



±83,000 SF

AVAILABLE FOR LEASE

New Class A Spec Development
Last Mile Logistics Facility

www.55bay.com



55

BROOKLYN, NY
BAY STREET



±83,000 SF

TOTAL BUILDING SIZE

14,019 SF

MEZZANINE SPACE

36' CLEAR

CEILING HEIGHT

54' x 58'

COLUMN SPACING

18 DOCKS

LOADING DOORS

2 DRIVE-INS

DRIVE-IN DOORS

47 SPACES

CAR PARKING

ESFR

SPRINKLER SYSTEM

LED

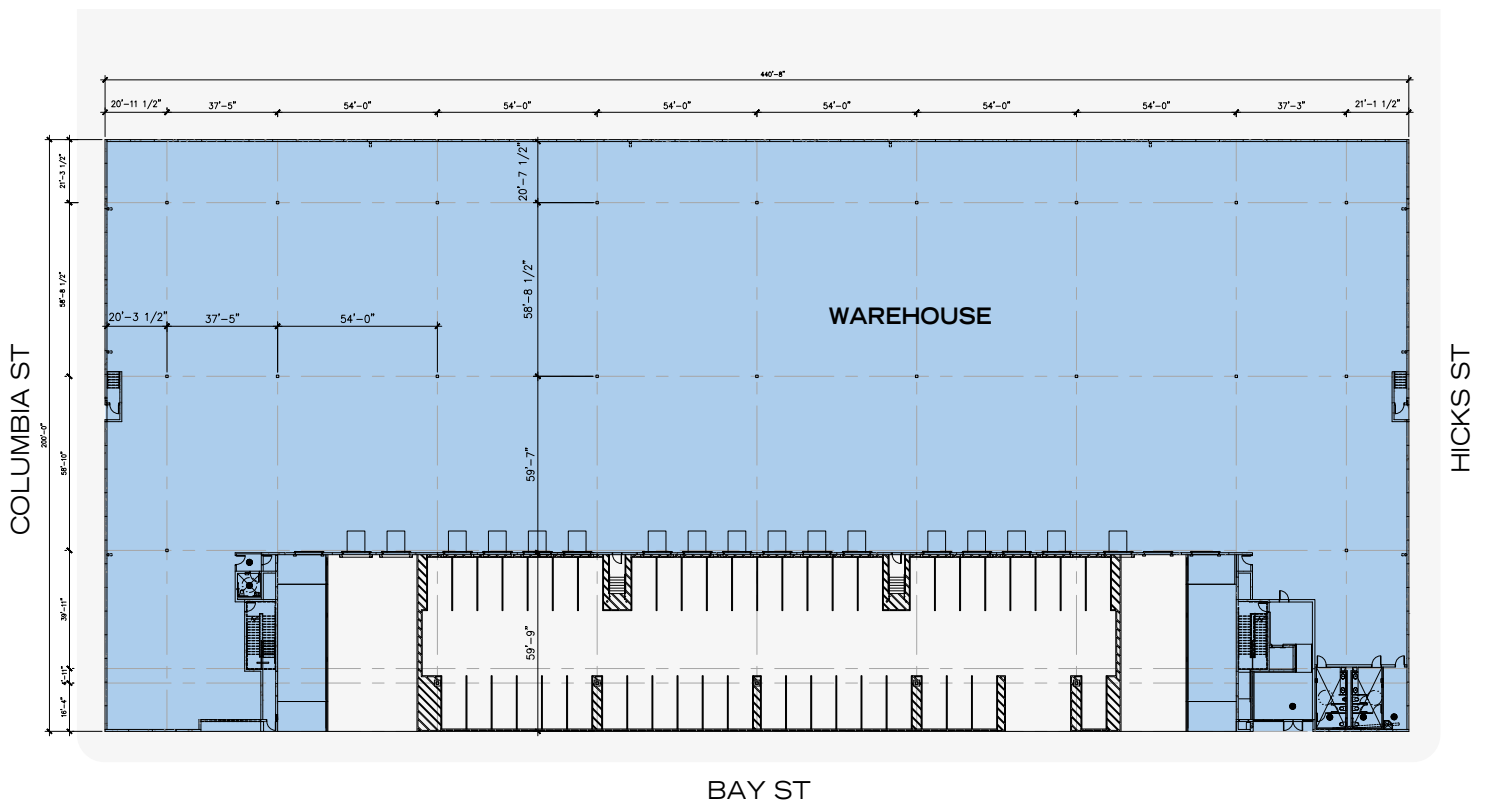
LIGHTING

PROPERTY DESCRIPTION

Currently under construction, 55 Bay Street is a state-of-the-art speculative industrial development located in the Red Hook section of Brooklyn. The best-in-class design will feature modern column spacing and energy efficient LED lighting. The site is just minutes from the Brooklyn-Queens Expressway (I-287) with immediate access to Manhattan via the Hugh Carey and Williamsburg and Brooklyn bridges giving it an unmatched ability to reach the countries largest consumer base.



SITE PLAN

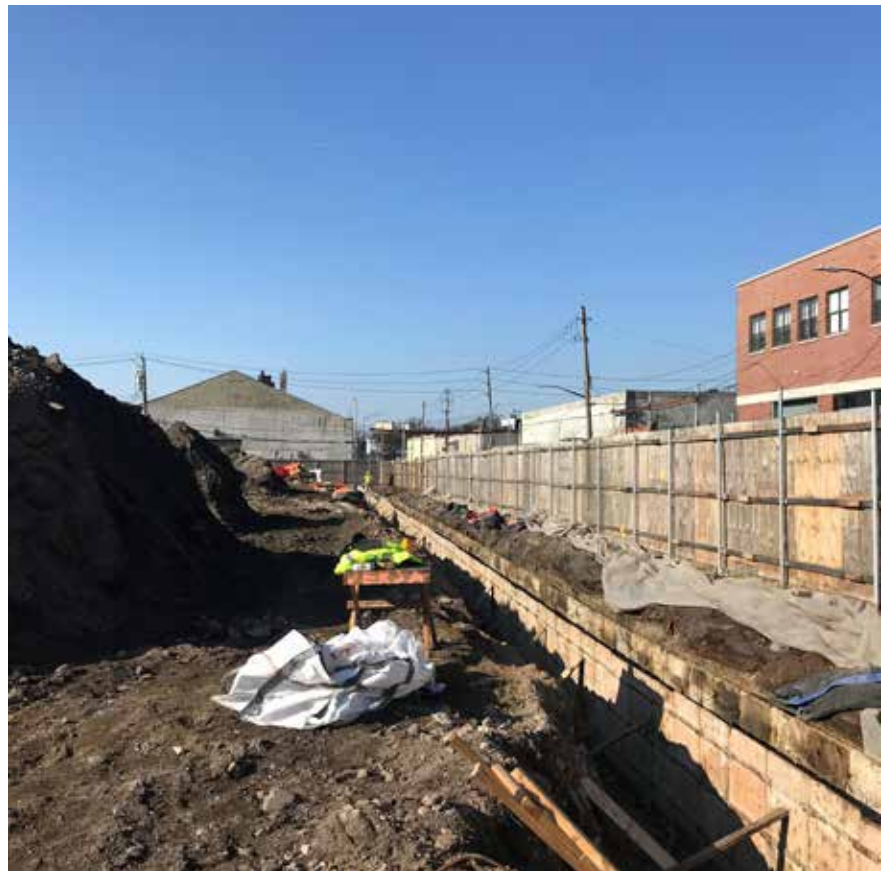


CONSTRUCTION PROGRESS
as of January 2020

SITE WORK

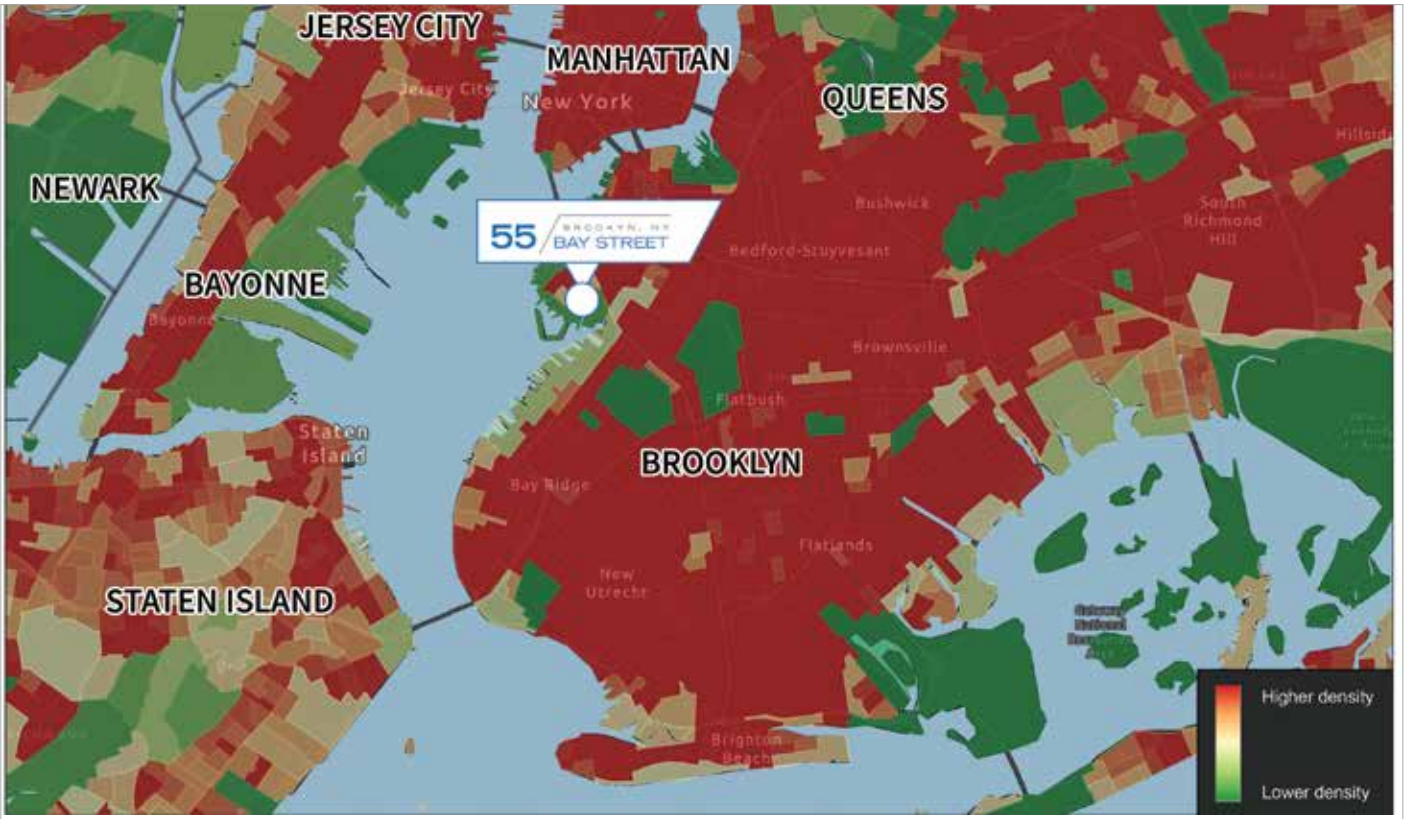


FOOTINGS POURED

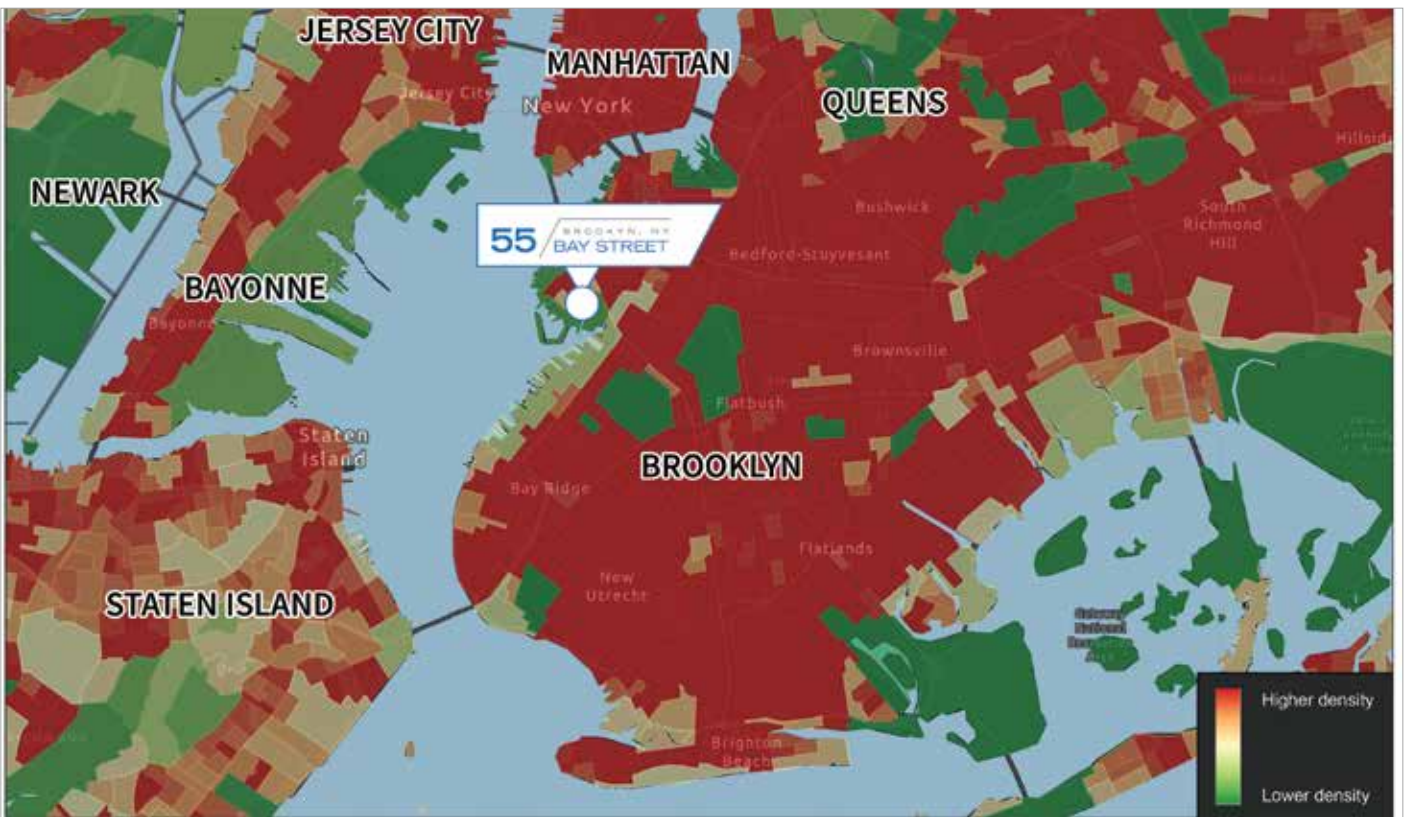


LABOR & TOTAL POPULATION MAPS per square mile

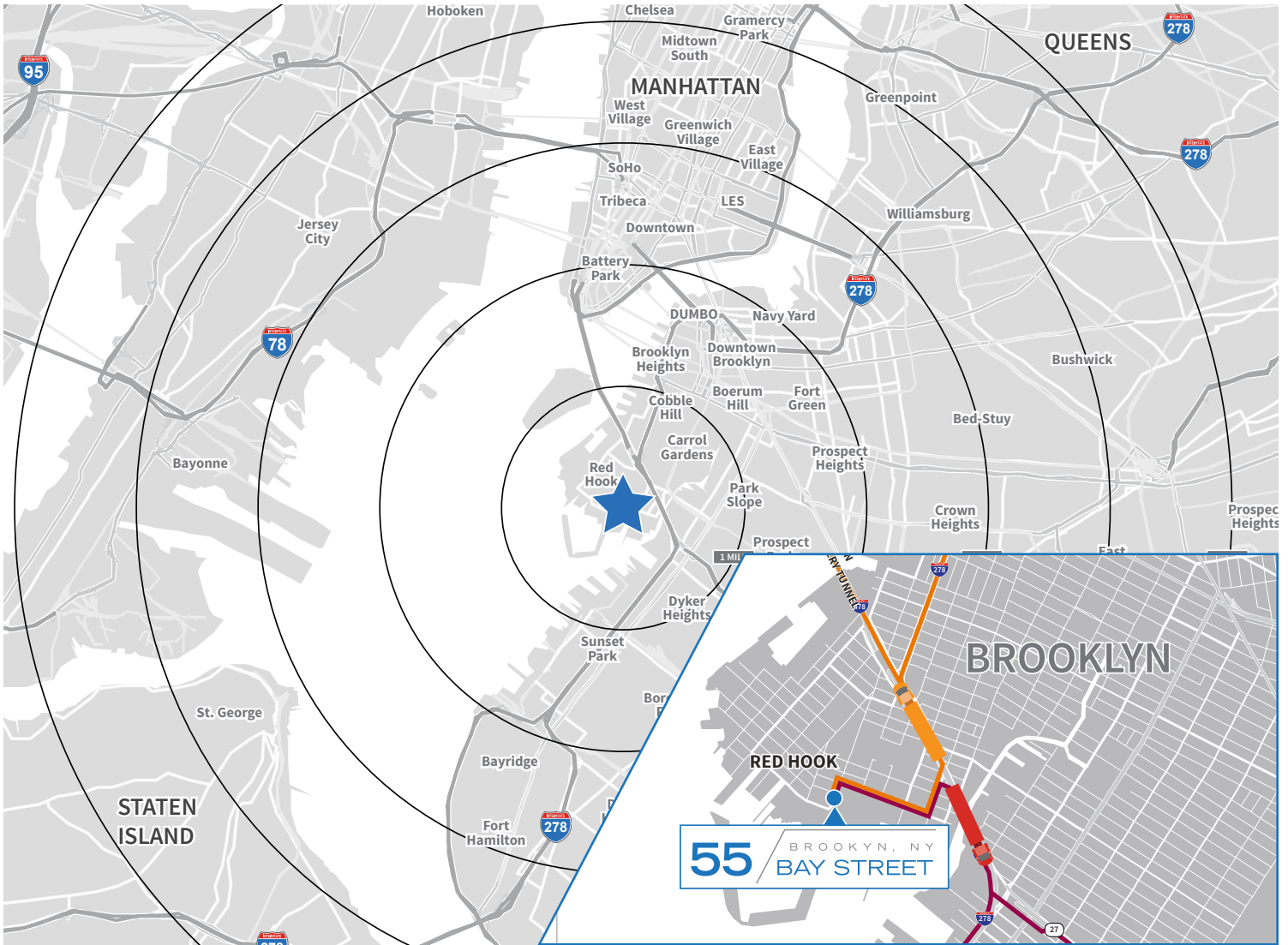
TRANSPORTATION & WAREHOUSING LABOR



TOTAL POPULATION



LOCATION



KEY DRIVING DISTANCES

I-278	0.6 mi	Manhattan Bridge	3.4 mi
Hugh L. Carey Tunnel	1.3 mi	Williamsburg Bridge	5.8 mi
Downtown Manhattan	2.9 mi	Midtown Manhattan	9.1 mi
Downtown Brooklyn	3.3 mi	Long Island City, Queens	8.3 mi
Brooklyn Bridge	3.3 mi		

PUBLIC TRANSPORTATION

B57/61 Bus - Lorraine St./Columbia St.	0.1 mi
F/G Train - Smith St./9th St. Station	0.4 mi

www.55baystreet.com



Leslie Lanne
Senior Managing Director
+1 212 292 7597
leslie.lanne@am.jll.com

Rob Kossar
Vice Chairman
+1 212 292 7593
rob.kossar@am.jll.com

Jeremy Liebler
Associate
+1 908 337 7963
jeremy.liebler@am.jll.com